



D-13, 15, 16, 18, 20 & 24
FLOOR MACHINES
MINUTEMAN
AMERICAN CLEANING EQUIPMENT CORPORATION

**DELUXE & SPECIAL
FLOOR MACHINES**

OPERATING and PARTS MANUAL

Effective May 1, 1969—Subject to Change Without Notice

FOB Addison, Illinois

ASSEMBLY INSTRUCTIONS:

Machines are completely assembled at the factory. The handle should be adjusted to suit the height of the operator. *Be sure to insert the connector body on the lead wire, at the lower end of the handle, to the plug on the motor.*

The brush is attached to the machine in the following manner: Tip machine backward with handle on the floor.

DIRECTIONS FOR OPERATING:

Be certain to plug machine into outlet only with the proper voltage as indicated on the nameplate of the machine. This machine is equipped with a 3 wire cable. Two of the wires are power wires. The third wire is green and is the grounding wire. Be sure to plug this machine into a 3 prong grounded receptacle. Any altering of the grounding prong, use of adapters or any other method of bypassing the grounding wire could cause a serious shock to the operator in the event of a short in the machine. If extension cords are used, be certain it is larger than is furnished with machine to avoid voltage drop. The use of an extension cable too small in size will cause motor to slow down when load is applied. It will cause motor to overheat which could cause a burn-out. Be certain the extension

IF MACHINE FAILS TO START:

1. Have you the correct current and voltage? (alternating or direct)
2. Is there current in the outlet you are using?
3. Are the fuses OK?
4. Inspect switch to determine if connections are OK? Is it plugged in fully?
5. Be sure the connection at the end of the handle is attached into the motor plug.

ACTUAL OPERATION:

Due to the rotation of a single disc machine, it will naturally have a tendency to move to the right or left, depending on the operator's slight pressure either up or down on the handle. If the handle is lifted slightly up, the machine will travel to the right. A slight downward pressure, it will travel to the left. It is this maneuverability that enables an operator to cover large areas in a short time with the least amount of effort. The machine can be made to operate without travel by balancing . . . *keeping the brush pressure on the floor equal.* With a few minutes practice

CARE OF MACHINE:

Motors and gear cases are factory sealed and require no lubrication. Motors are of 50° centigrade type. Normally they will heat up to 150° depending on the temperature in the area in which they are used. If the wiring and current are correct, heating of the motor will do no harm. Motors to be effective must heat to some extent.

Keep motors clean by blowing out at exhaust ports with an air hose or bellows. Remove bell cover and blow out the top periodically.

Keep the machine clean at all times. Wipe off the machine regularly with a clean damp cloth.

Brush is then inserted over the lugs on the bottom of the gear unit and twisted to the left. This secures the clutch plate of the brush over the lugs on the gear unit in the correct driving position. Make sure your machine brush is rotating in the proper direction (C.C.W. when looking down at machine in operating position). *Do Not Install Brush by Running Machine Over It.*

cord connection to the machine cord is kept out of water or dampness. Be certain the extension cord is properly grounded from the wall receptacle through the entire length to the machine. *Be sure current and voltage source correspond to those stamped on nameplate of motor.* A.C. Motors will not operate on D.C. current or vice versa.

The line voltage should not be more than 10% over or under the reading on the motor nameplate. All motors are standard 115 volt unless otherwise specified. When starting machine, and motor slows down, this indicates not enough current is being supplied.

On retractable type wheel assemblies never operate the machine with wheels on floor.

6. Does the brush move freely, or is something blocking its movement
7. Try turning the brush by hand. Generally if the trouble is internal, it will move with considerable effort, or not at all.
8. Most problems are the result of current and wiring, so check that thoroughly. If necessary call an electrician.

in a large area, you will have perfect finger-tip control of the machine.

Do not fight the machine. Follow the directions above and let the machine do the work.

Do not subject the brushes to unnecessary pressure. Remove the brush from the machine when not in use.

If the machine wobbles, it is an indication of uneven brush bristles or an off-center clutch plate.

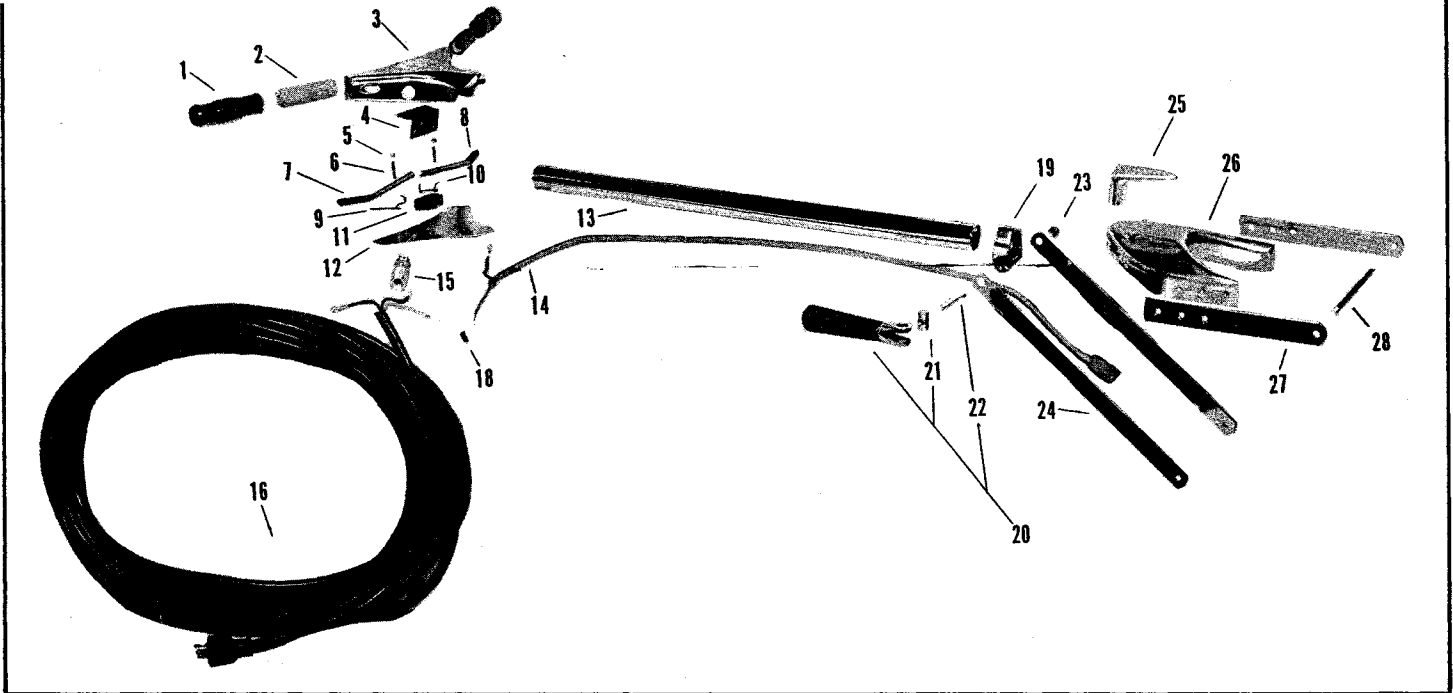
All machines are provided with mounting holes for installing solution tanks and fittings.

Store in an upright position with the brush removed. Do not lay the machine down on its handle for long periods of time.

Do not permit unqualified persons to tamper with the machine. Major repairs should be taken up with the factory.

Protect the investments your machine represents by following the above outlined instructions.

For further information contact your AMERICAN dealer or write the factory.



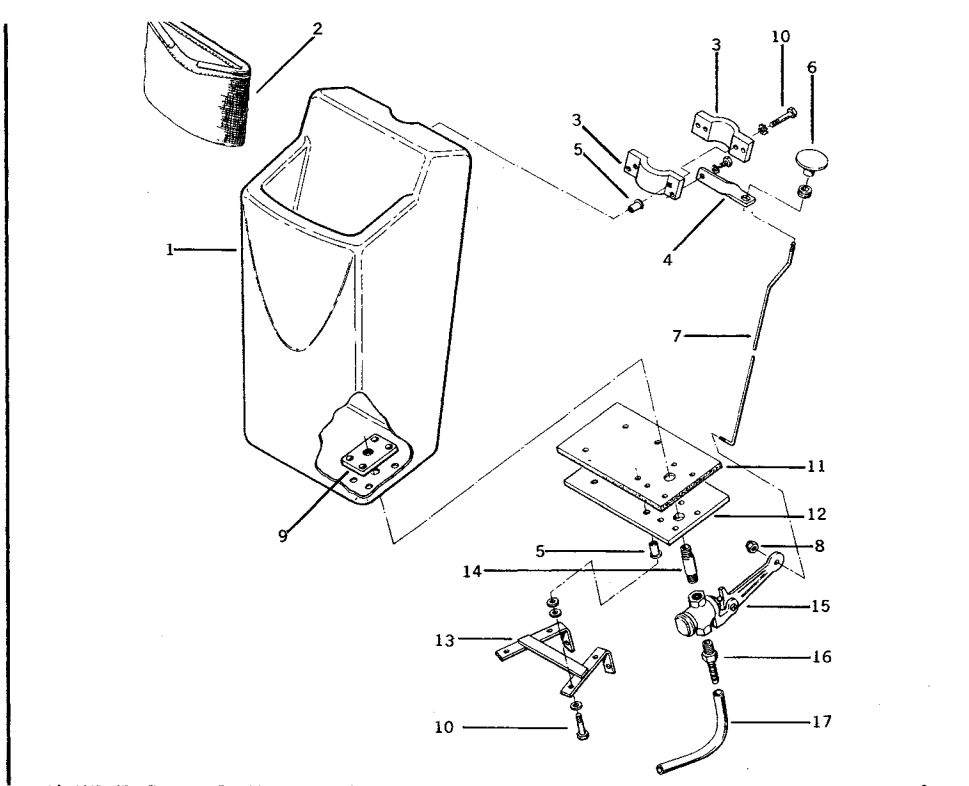
HANDLE ASSEMBLY

ITEM	PART NO.	DESCRIPTION	NO. REQ'D	PRICE
	160001	Handle Assembly Complete w/cord (All Except S-13, D-24)	1	
	240056	Handle Assembly Complete w/cord (D-24)	1	
	130086	Handle Assembly Complete w/cord (S-13)	1	
1	160015	Handle Grip	2	
2	160014	Handle Core	2	
3	160002	Switch Case	1	
4	160021	Insulator	1	
5	160011	Spacer Lever	2	
6	160010	Stud Lever	2	
7	160005	Switch Lever R.	1	
8	160006	Switch Lever L.	1	
9	160007	Lever Spring R.	1	
10	160008	Lever Spring L.	1	
11	160012	Switch (Except 1-1/2 H.P.)	1	
	240012	Switch—1-1/2 H.P.	1	
12	160004	Switch Case Back Plate	1	
13	160022	Handle Tube—Short 29-1/4"	1	
	240034	Handle Tube—Long 34-1/2"	1	
14	130011	Handle Cord	1	
15	150003	Strain Reliever—Deluxe Only	1	
16	150002	Trailing Cord—Deluxe	1	
	160057	Trailing Cord—Special	1	
18	160024	Wire Connector (#74-B)	2	
19	160026	Clamp	1	
20	130074	Clamp Lever Assembly	1	
21	130078	Cam Pin	1	
22	400909	Stud—See #130074	1	
23	401900	Lock Nut	1	
24	160029	Handle Brace	2	
25	130017	Cord Hook	1	
26	160023	Bracket Lower Handle	1	
27	160025	Bracket Arm	2	
28	160033	Handle Hinge Pin	1	

Warranty

American MINUTEMAN F.M.M.'s are guaranteed to the original purchaser for a period of 1 year to replace free of charge all parts of the units returned prepaid to American Cleaning which upon examination shall disclose to our satisfaction to be defective in manufacture or workmanship.

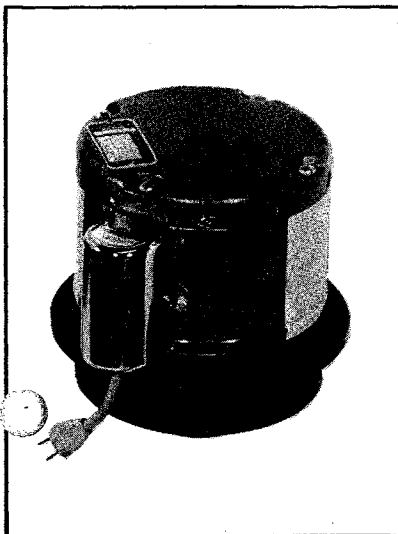
This guarantee does not apply to damage resulting from accident or to any unit repaired or altered by anyone other than authorized personnel, or to any unit which has been improperly installed, neglected or operated contrary to instruction.



TANK ASSEMBLY

ITEM	PART NO.	DESCRIPTION	NO. REQ'D	PRICE EA.
	130064	Tank Assembly Complete	1	
1	130042	Tank	1	
2	130023	Strainer	1	
3	130054	Tank Bracket	2	
4	130055	Rod Bracket	1	
5	380050	Grommet	1	
6	130043	Knob	1	
7	130047	Rod (All Models Except D-24)	1	
7	130046	Rod (D-24 Only)	1	
8	401608	Acorn Nut	1	
9	130055	Outlet Plate	1	
10	402106	Well Nuts	6	
11	130065	Gasket	1	
12	130066	Tank Mounting Plate	1	
13	130067	Mounting Plate Bracket	1	
14	130050	Nipple	1	
15	130049	Valve	1	
16	130058	Hose Adapter	1	
17	130052	Hose	1	

MOTOR ASSEMBLIES

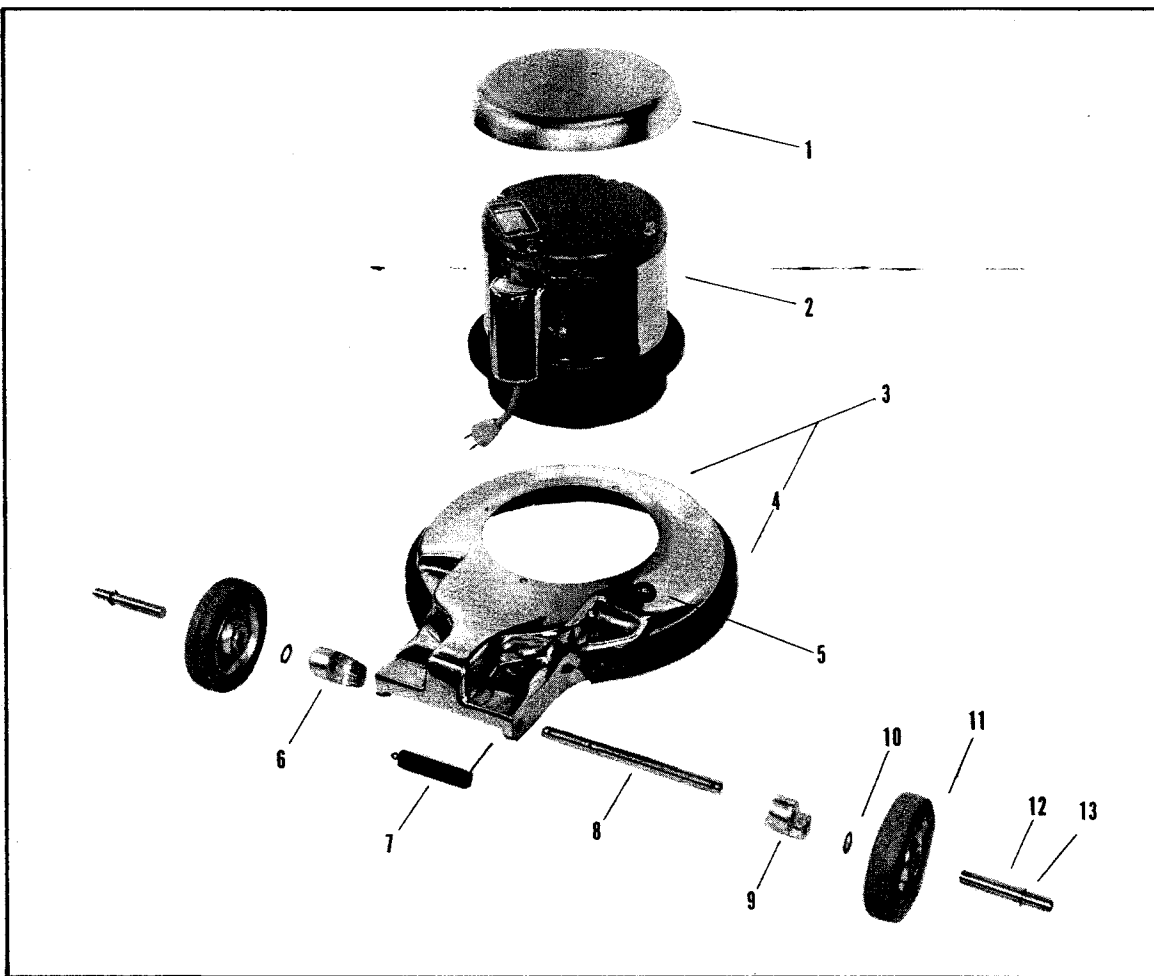


MOTOR ASSEMBLIES—DELUXE

ITEM	PART NO.	DESCRIPTION	NO. REQ'D	PRICE
2	160044	Motor & Gear Unit 1/2 H.P.	1	
	150101	Motor Only 1/2 H.P.	1	
	151000	Gear Case Only 1/2 H.P.	1	
	160045	Motor & Gear Unit 3/4 H.P.	1	
	171000	Motor Only 3/4 H.P.	1	
	151000	Gear Case Only 3/4 H.P.	1	
	200002	Motor and Gear Unit 1 H.P.	1	
	200000	Motor Only 1 H.P.	1	
	200100	Gear Case Only 1 H.P.	1	
	200025	Motor & Gear Unit 1-1/2 H.P.	1	
	200031	Motor Only 1-1/2 H.P.	1	
	200030	Gear Case Only 1-1/2 H.P.	1	

MOTOR ASSEMBLIES—SPECIAL

ITEM	PART NO.	DESCRIPTION	NO. REQ'D	PRICE
2	130034	Motor & Gear Unit 1/3 H.P.	1	
	130101	Motor Only 1/3 H.P.	1	
	131000	Gear Case Only 1/3 H.P.	1	
	150049	Motor & Gear Unit 1/2 H.P.	1	
	150063	Motor Only 1/2 H.P.	1	
	152000	Gear Case Only 1/2 H.P.	1	
	160079	Motor & Gear Unit 3/4 H.P.	1	
	160080	Motor Only 3/4 H.P.	1	
	160081	Gear Case Only 3/4 H.P.	1	



BRUSH HOUSING ASSEMBLY

ITEM	PART NO.	DESCRIPTION	NO. REQ'D	PRICE
1	130033	Drip Cover (Special)	1	
1	160048	Drip Cover (Deluxe)	1	
3	130083	Brush Housing with Bumper—13"	1	
	150534	Brush Housing with Bumper—15"	1	
	160034	Brush Housing with Bumper—16"	1	
	180034	Brush Housing with Bumper—18"	1	
	205034	Brush Housing with Bumper—20"	1	
	240001	Brush Housing with Bumper—24"	1	
4	130038	Bumper Only—13"	1	
	150543	Bumper Only—15"	1	
	160043	Bumper Only—16"	1	
	180043	Bumper Only—18"	1	
	205043	Bumper Only—20"	1	
	240043	Bumper Only—24"	1	
5	130029	Grommet Only	1	
6	150012	Wheel Bracket L.	1	
7	160038	Wheel Retractor Spring	1	
8	160058	Axle-Bracket	1	
9	150011	Wheel Bracket R.	1	
10	250028	Spring Washer	2	
11	150030	Wheel	2	
12	130082	Axle-Wheel	2	
13	404129	Wheel Retainer	2	



AMERICAN CLEANING *equipment corporation*

111 South Route 53, Addison, Illinois 60101