

Powr-Flite[®]

OPERATOR'S MANUAL & PARTS LIST

WIDE AREA SWEEPER VACUUM MODEL PF28SV



**WARNING: OPERATOR MUST READ AND UNDERSTAND THIS MANUAL
COMPLETELY BEFORE OPERATING THIS EQUIPMENT.**

Save These Instructions

WHEN THE MACHINE IS DELIVERED

If machine is damaged, notify the carrier immediately and request an inspection. Be sure to keep the carton, packing inserts, packing lists, and carrier's receipt until the inspector has verified your claim.

CUSTOMER'S RECORD

Model Number: _____

Serial Number: _____

Date Purchased: _____

IMPORTANT SAFETY INSTRUCTIONS

Save These Instructions

This vacuum is not a household appliance, intended for commercial use only.

SAFETY WARNINGS AND PRECAUTIONS

 **WARNING!** Read all instructions before using. Save These Instructions. Following the cleaning instructions will prolong the life of this vacuum.

Warning – To reduce the risk of fire, electric shock or injury:

1. Use only as instructed in this manual.
2. Do not leave appliance when plugged in. Unplug from outlet when not in use and before servicing.
3. Do not use outdoors or on wet surfaces.
4. Do not use to pick up liquids. This vacuum is for Dry Pickup only.
5. Do not use with damaged cord or plug. If appliance is not working as it should, has been dropped, damaged, left outdoors, or dropped into water, return it to a service center.
6. Do not vacuum up hard or sharp objects, as they may damage the vacuum bag or the vacuum motor.
7. Do not use without paper vacuum bag, cloth bag and filters in place.
8. Do not use with damaged cord or plug.
9. Do not kink or twist the power cord.
10. Do not pull or carry by the cord, use the cord as a handle, close a door on cord, or pull cord around sharp edges or corner. Do not run vacuum cleaner over cord. Keep cord away from heated surfaces.
11. Do not pull on the cord to unplug. Grasp and pull the plug, not the cord. Turn off the vacuum before unplugging.
12. Do not handle the cord, plug, switch or vacuum with wet hands.
13. Do not use outlets with inadequate current capacity.
14. Do not use an extension cord with this vacuum.
15. Do not put any objects into openings. Do not use with any opening blocked. Keep free of dust, lint, hair and anything that might reduce airflow.
16. Keep hair, loose clothing, fingers, and all parts of body away from openings and moving parts.
17. Use with extra care when cleaning stairs.
18. Do not use to pick up flammable or combustible liquids, such as gasoline, or use in areas where they may be present.
19. Do not use without dust bag in place.
20. Sparks inside the motor can ignite flammable vapors or dust. To reduce the risk of fire or explosion, do not use near combustible liquids, gases, or dusts, such as gasoline or other fuels, lighter fluid, cleaners, oil-based paints, or natural gas.
21. To reduce the risk of inhaling toxic vapors do not vacuum or use near toxic or hazardous materials.
22. Do not allow to be used as a toy. Close attention is necessary when used by or near children.
23. This machine is not intended for use by persons with reduced physical, sensory or mental capabilities, or lack of experience and knowledge.
24. Do not attempt to service the vacuum yourself. Repair by anyone other than an authorized repair service center may void the warranty.
25. Store the vacuum indoors in a cool, dry area.

STORAGE

Always store the vacuum in cool, dry place.

CONNECT TO A PROPERLY GROUNDED OUTLET ONLY! See Grounding Instructions

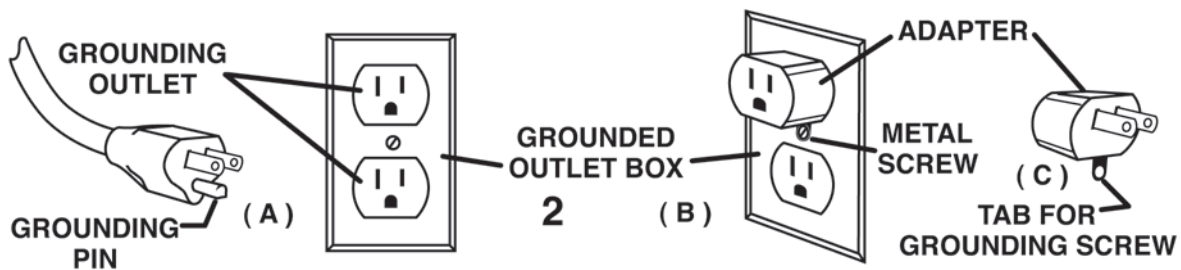
GROUNDING INSTRUCTIONS

This vacuum must be grounded! Grounding is a safety measure to reduce the risk of electrical shock to the operator should the machine malfunction or stop working. Grounding provides the path of least resistance for electric current and will trip the circuit breaker, stopping the flow of electricity.

This unit is equipped with a cord that has an equipment-grounding conductor and grounding plug. The plug must be inserted in an appropriate outlet that is properly installed and grounded in accordance with all local codes and ordinances. Cutting off the ground wire or using a cord that is not equipped with a ground plug will void the warranty on the unit. The manufacturer will accept NO liability associated with the unit.

⚠ WARNING! Improper connection of the equipment-grounding conductor can result in a risk of electric shock. Check with a qualified electrician or service person if you are in doubt as to whether the outlet is properly grounded. Do not modify the plug provided with the appliance. If it will not fit the outlet, have a proper outlet installed by a qualified electrician.

The vacuums are for use on a nominal 120-volt circuit, and have a grounded plug that looks like the plug illustrated in Figure A. A temporary adapter that looks like the adapter illustrated in Figure B and C may be used to connect this plug to a 2-pole receptacle as show in Figure B if a properly grounded outlet is not available. The temporary adapter should be used only until a properly grounded outlet (Figure A) can be installed by a qualified electrician. The green colored rigid ear, lug, or the like, extending for the adapter must be connected to a permanent ground such as a properly grounded outlet box cover. Whenever the adapter is used, it must be held in place by a metal screw.



Note: In Canada, the use of a temporary adapter is not permitted by the Canadian Electrical Code.

⚠ WARNING! The replacement or repair of damaged wiring should only be performed by a qualified electrician or service engineer from the manufacturer or authorized service center.

HANDLE ADJUSTMENT

1. Using the wing nuts (Fig. 1), adjust the handle length to a comfortable working position. Tighten all wing nuts.
2. Loosen the handle lock levers (Fig. 2) on both sides of the unit and adjust the handle to a comfortable operation height.
3. Tighten the handle lock lever on both sides to lock the handle in place.



BAG INSTALLATION

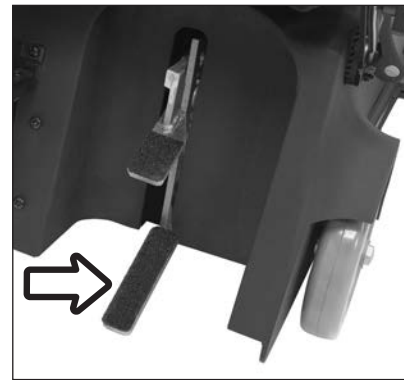
1. Attach the cloth zipper bag by placing the elastic opening seal securely around the neck of the exhaust opening. (Fig. 3)
2. Connect the snap from the bag to the exhaust frame. (Fig. 4)
3. Connect the two snaps in the front of the bag onto the top of the wide area vacuum sweeper.
4. Unzip cloth bag and install the paper bag inside. (Fig. 5)
5. Attach the paper bag onto the vacuum exhaust opening. (Fig. 6)
6. Completely close zipper on the cloth bag.

ATTENTION: Never operate machine without cloth bag.
Always use cloth and paper bags together.



BRUSH HEIGHT ADJUSTMENT

1. This machine has 5 brush adjustment levels.
2. To lower brush height level: depress the lower pedal down and release one notch of ratchet at a time to desired carpet height.



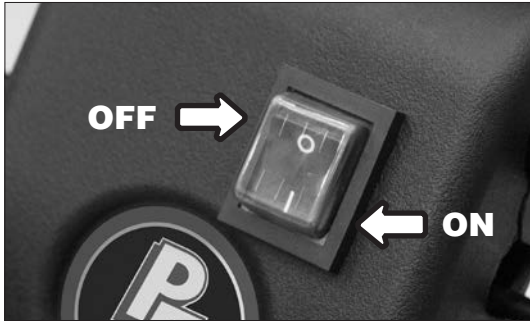
3. To raise brush height level: depress the top pedal down to desired carpet height.



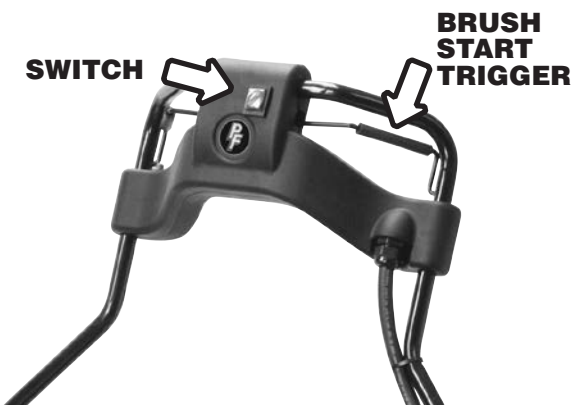
4. When the machine is not in use, place nozzle in an up position to lift brush bristles off the floor to prevent damaging the brush bristles.

OPERATION OF MACHINE

1. Plug power cord into properly grounded power outlet.
2. To turn on machine, click the ON/OFF switch to the ON position.
NOTE: The vacuum does not turn on until step 3.



3. To operate brush and vacuum motor squeeze the brush start triggers.
4. Adjust brush height for proper pick-up.



CIRCUIT BREAKER



Your new wide area vacuum comes equipped with a 15 amp manual circuit breaker. If the machine does not turn on you will need to check the circuit breakers.

To reset circuit breakers:

1. Unplug the wide area vacuum cleaner.
2. Check machine for the following:
Full bag, obstructions, clogged brush, brush height set too low, etc.
3. Press the affected circuit breaker button to reset.
4. Resume operation.

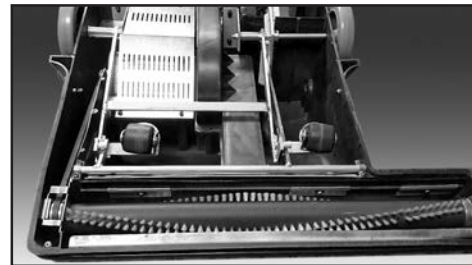
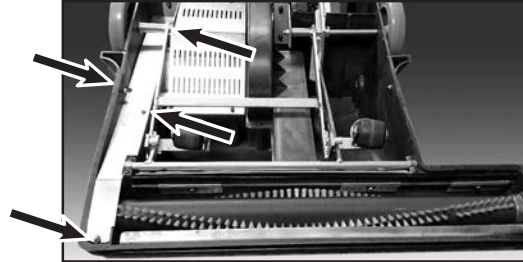
BRUSH ROLL REPLACEMENT

Brush Roll Replacement for the Wide Area Sweeper

Tools:

- 4mm Allen Wrench
- 11mm Wrench
- Phillips Head Screwdriver

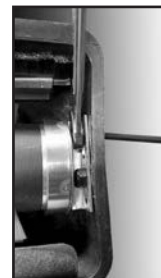
1. Detach belt cover by removing the 4 belt cover screws as shown in the picture below. This will expose the belt connected to the brush roll.



2. Pull down bumper on long end of sweeper to expose screws.



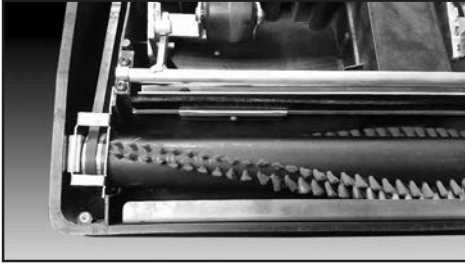
3. With a 10mm wrench, secure the nut inside of the brush roll and use a 4mm Allen wrench for the screw. Loosen screws to release the brush from the vacuum.



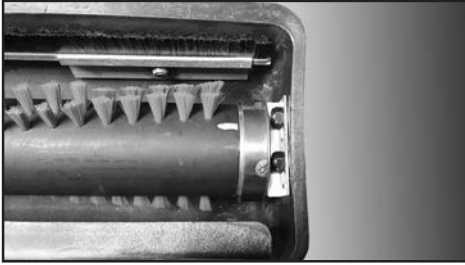
4. Pull out old brush roll from the sweeper. This will release the tension from the belt.



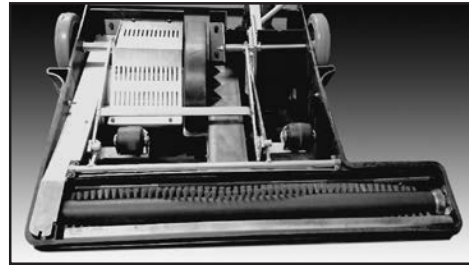
5. Inert the new brush roll. Ensure the belt loops around the grooved end of brush roll and that there is tension in the belt. The brush should be able to spin without any interference.



6. Using the 10mm wrench and Allen wrench, screw in the brush roll with screws and nuts previously used.



7. Install belt cover and secure with previously removed screws.



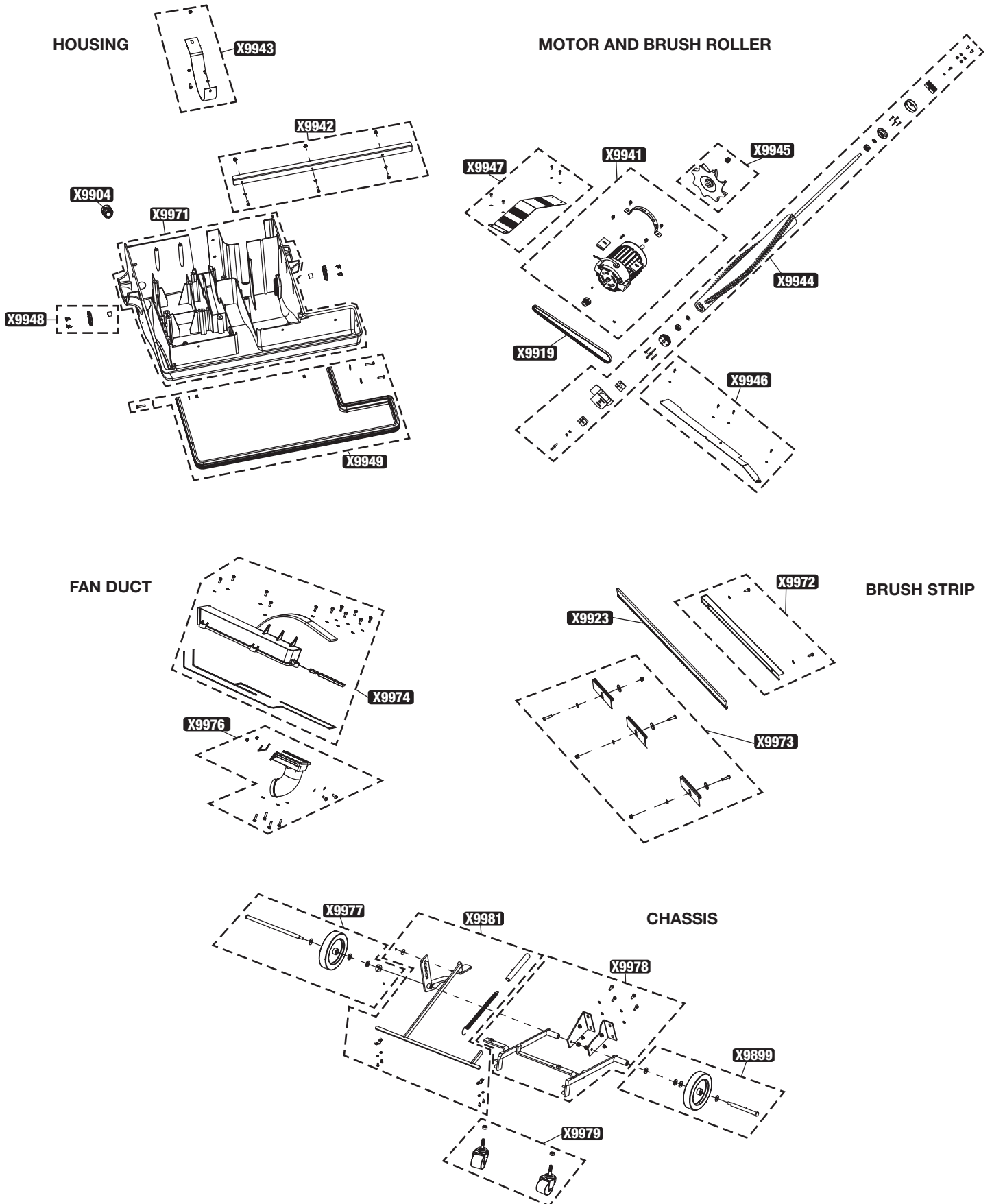
MACHINE MAINTENANCE

CAUTION: Unplug the vacuum cleaner before performing the following steps.

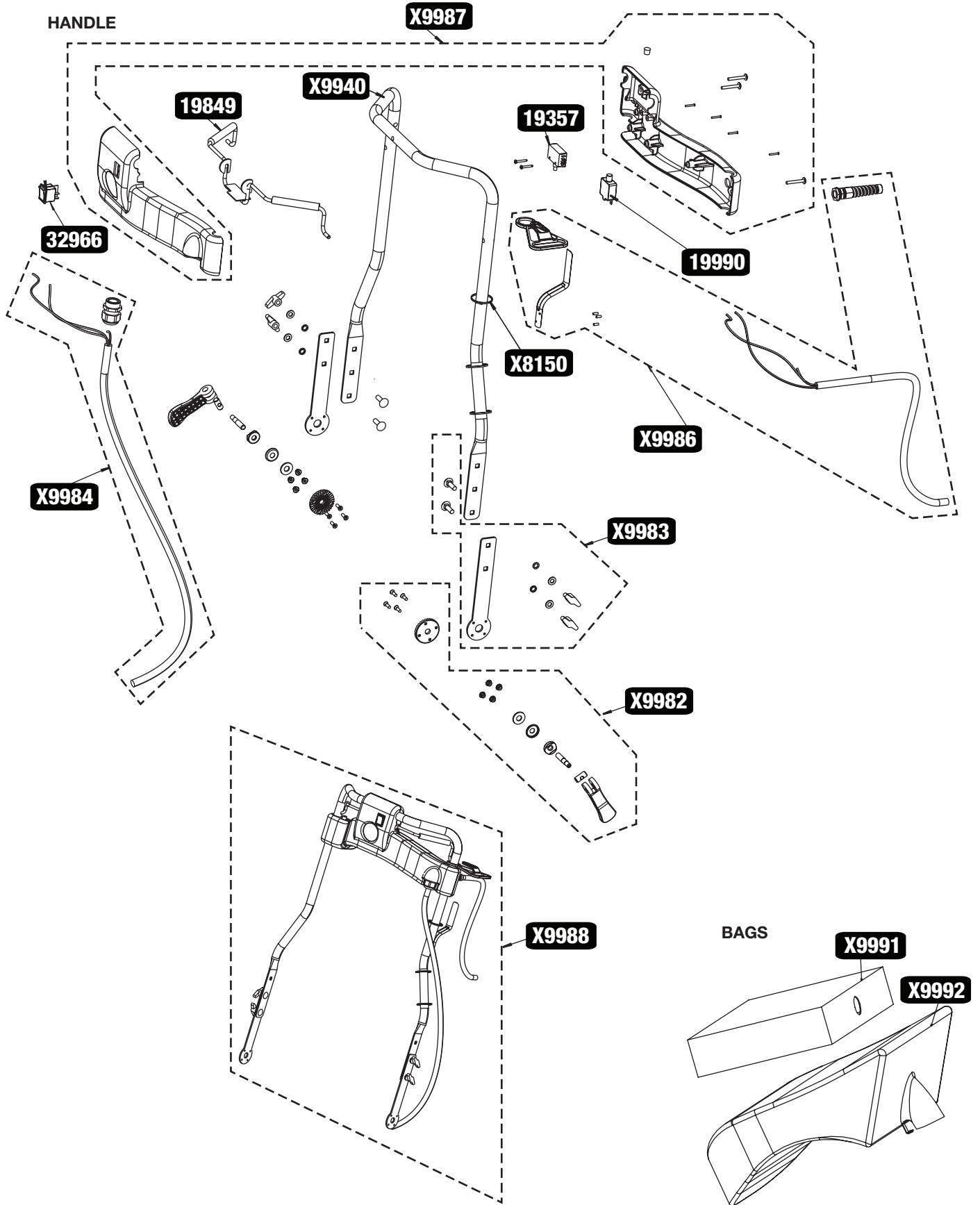
FOR BEST PERFORMANCE

- Keep machine and all accessories clean and in good operating condition.
- Change vacuum bags and filters as recommended to maintain optimum cleaning efficiency.
- Always use genuine bags, filters and parts, as use of other products may result in poor cleaning or filtration performance. OEM filtration products are designed for maximum performance.
- Have machine checked periodically by an authorized service representative.
- Store machine carefully in dry area.
- For optimum cleaning performance and safety, follow your owner's manual.
- After each use, carefully wrap power cord around handle and check cord for wear or damage. If cord is damaged, have power cord replaced by an authorized service representative immediately.

SCHEMATICS



SCHEMATICS



PARTS LIST

PARTS #	DESCRIPTION
19357	20A Switch Push BT DPST WAS
19849	Trigger Brush Switch Blk
32966	On/Off Switch CM-WAV Main DPST
X9899	Left Rear Wheel Kit
X9904	Strain Relief, PG21 WAS
X9919	Belt Drive Brush Roll WAS
X9923	Brush Strip WAS
X9940	Handle, WAS
X9941	Motor Assembly Kit
X9942	Brush Guard Kit
X9943	Fan Chamber Kit
X9944	Brush Roller Kit
X9945	Motor Fan Kit
X9946	Belt Cover Kit
X9947	Motor Cover Kit
X9948	Locating Plate Kit
X9949	Housing Bumper Kit
X9971	Housing Base Kit
X9972	Brush Strip Guard Kit
X9973	Brush Strip Holder Kit
X9974	Fan Duct Kit
X9976	Fan Elbow Kit
X9977	Right Rear Wheel Kit
X9978	Wheel Frame Kit
X9979	Caster Wheel Kit
X9981	Pedal Frame Kit
X9982	Cam Level Kit
X9983	Bottom Handle Kit
X9984	Front Cord Cable Kit
X9986	Power Cord Cable Kit
X9987	Switch Box Kit
X9988	Handle Assembly Kit
X9991	Bag Paper 10-Pak WAS
X9992	Bag Cloth Powr-Flite WAS
X8150	Cable Tie 11" #50 Black Tie
19990	Circuit Breaker 15A, W58-XB1A4A-15

The Limited Warranty

The manufacturer warrants to the original purchaser that products manufactured are free from defects, provided such goods are installed, operated and maintained in accordance with written manuals or other instructions for a period of 1 year from date of purchase on workmanship, motor, and parts. In case you, as our customer, meet any trouble with your machine, contact a representative, who will be happy to be of service to you and will take care of any warranty issues.

Powr-Flite[®]

A Tacony Company

3101 Wichita Court • Ft. Worth, TX 76140-1755

1-800-880-2913 • Fax: 1-817-551-0719 • www.Powr-Flite.com