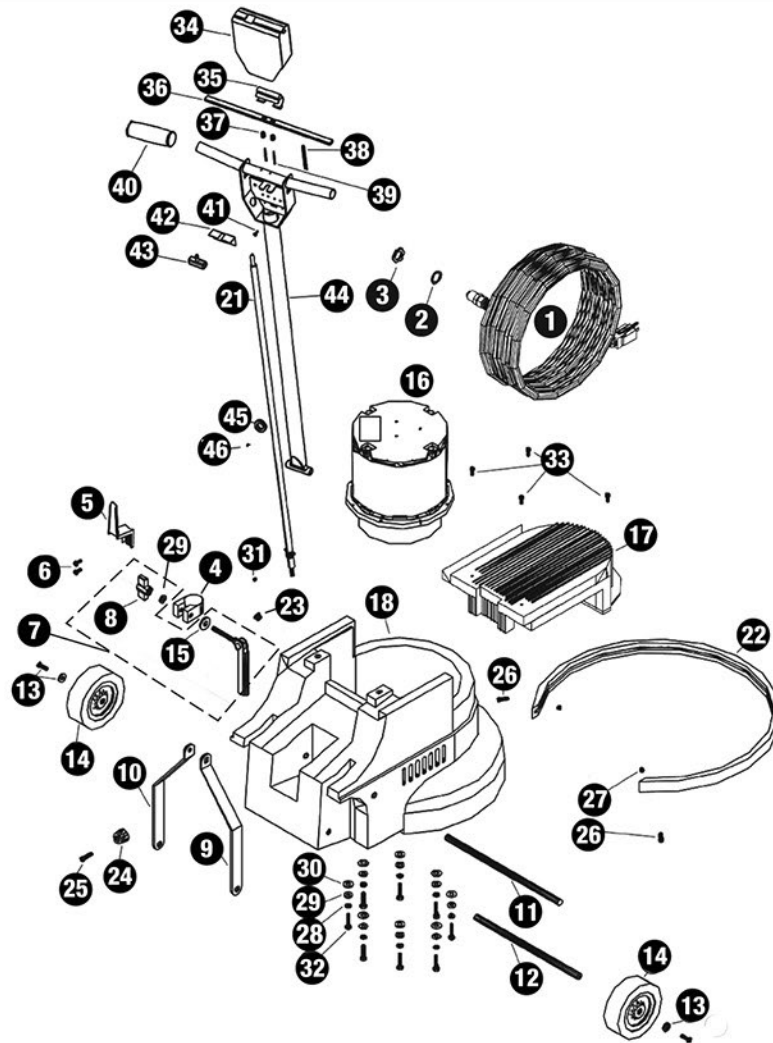


Models M171-3, M171SD-3, M171HD-3, M172-3, M201-3, M201HD-3, M202-3 PARTS Floor Machines



ref #	item #	description
1	M1369G	cord 14/3 STW 50' gray
2	SR36	strain relief washer
3	X8008N	nut, lock, 1/2" steel conduit
4	X8012	handle clamp collar
5	X8013	cord hook, plated
6	X8207	screw 10-24 x 1/2 phil pan S/T
7	X8012A	handle clamp assembly
8	X8016	handle clamp knob
9	X8807R	handle brace, right, M style
10	X8807L	handle brace, left, M style
11	X8809	pivot shaft, 1/2" x 12-7/8"
12	X8019	axle wheel 1/2" x 12"
13	X8020	washer, countersunk, axle
13	X8265	screw 1/4 - 20 X 3/4 flat phil
14	X8024	wheel, black, 5" x 1 1/4"
15	X8028	washer, cam w/ slot
16	X8071P	motor 2 speed (M172-3, M202-3)
16	X8980	motor 1.5hp chrome (M171HD-3, M201HD-3)
16	33080	motor 1.5hp w/ 10:1 gear box M171-3, M201-3
17	X8042A	motor cover, M floor machines, blue
18	X8052AP	housing, 20" black base
18	X8053A	housing, 17" black housing
19	X8040	capacitor
...	X9044	capacitor start
20	X8038	capacitor run
21	X8022	inline cord 14/3 SJTWA, 49"
22	X8030J	bumper, M style, blue/black
23	X8151B	plug, plastic, black 7/16" hole
24	X8258A	bumper recessed poly 50pk
25	X8258AS	screw #8 x 1 PHPH type A
26	X8821	bolt 8-32 x 3/4 phil truss

ref #	item #	description
27	X8822	spacer plastic blk #8 x .25
28	X8212	split lock washer 1/4" med
29	X8218	washer 5/16 SAE flat zinc
30	X8219	washer 3/8 SAE flat zinc
31	X8222	screw 1/4-20 X 3/16 soc set
32	X8226	screw 1/4-20 x 1-1/4 hex head
33	X8272	screw 8-32 x 1/2 truss/phil
34	X8912	metal switch box cover, metal handle
35	X8914	thumb switch actuator
36	X8917	trigger handle metal handle
37	X8916	spring trigger metal handle
38	X8915	spring, trigger thumb actuator
39	X8918	roll pin
40	X8941	handle grip, 1" diameter
41	7CY001	washer #10 int tooth lock ss
42	X8923	insulation sheet 2.5x2x.015
43	F5P	switch 25A SP momentary w/nuts
44	X8911	handle, all metal
45	7BG004	grommet
46	X8222	screw 1/4-20 x 3/16 soc set

NOT ILLUSTRATED

- SR42 large metal strain relief
- X8023A 17amp circuit breaker

*call for pricing and availability of all referenced parts