

Powr-Flite®

OPERATOR'S MANUAL & PARTS LIST

Ultra High Speed Burnishers



**1200 RPM
Model M1200-3**

**1600 RPM
Model M1600-3**

**2000 RPM
Model M2000-3**

U.S. Patent Number 4,845,798
U.S. Patent Number 4,756,042
U.S. Patent Number 296,252

**WARNING: OPERATOR MUST READ AND UNDERSTAND THIS MANUAL
COMPLETELY BEFORE OPERATING THIS EQUIPMENT.**

Save These Instructions

Your new Pour-Flite® Ultra High Speed Burnisher will afford you many years of trouble-free operating satisfaction provided it is given proper care. Prior to packaging, your Pour-Flite® Ultra High Speed Burnisher was inspected by a Quality Control Technician.

WARNINGS

READ THIS OPERATOR'S MANUAL!

- WARNING:** You must have training in the operation of this machine before using.
- WARNING:** Machines can burn flammable materials and vapors. Do not use this machine with or near fuels, grain dust, solvents, thinners or other flammable materials.
- WARNING:** Do not operate this machine unless it is completely assembled.
- WARNING:** Do not use this machine as a step or to move furniture.
- WARNING:** When disconnecting power cord from electrical outlet, grasp the plug. Pulling it out by the cord itself can damage cord insulation and internal connection to plug. To prevent electric shock, always remove the electrical plug from the electrical outlet before doing any repairs or maintenance to this machine.
- WARNING:** To prevent injury, always remove the electrical plug from the electrical outlet before changing the polishing pad and before leaving the machine.
- WARNING:** To prevent injury, keep hands, feet and loose clothing away from the rotating pad.
- WARNING:** Maintenance and repairs must be done by authorized personnel only.
- WARNING:** Keep all fasteners tight. Keep adjustments according to specifications.
- WARNING:** Keep the electrical parts of the machine dry. For storage, keep the machine in a building.
- WARNING:** Always use a three-wire electrical system connected to the electrical ground. For maximum protection against electric shock, use a circuit that is protected by a ground fault circuit interrupter. Consult with your electrical contractor.
- WARNING:** To prevent damage to the power cord, do not let the pad, pad driver or wheels touch the power cord when the machine is running. Always lift the power cord over the machine.
- WARNING:** Make sure all labels, decals, warning, cautions and instructions are fastened to the machine.

SAFETY INSTRUCTIONS

This Floor Machine should be grounded while in use to protect the operator from electric shock. This machine is equipped with a 3-conductor cord and a 3-prong grounded type attachment cap plug to fit the proper grounding type receptacle. The green (or green and yellow) conductor in the cord is the grounding wire. Never connect this wire to anything other than the grounding blade.

The Floor machine is provided with an attachment cap plug, as shown in Sketch A, and is intended for use on a nominal 120 volt circuit. If a properly grounded receptacle, as shown in Sketch A, is unavailable, an adaptor, as shown in Sketch C, is available and should be installed, as shown in Sketch B, if the outlet box that houses the receptacle is grounded. Be sure to fasten the grounding tap to the faceplate screw.

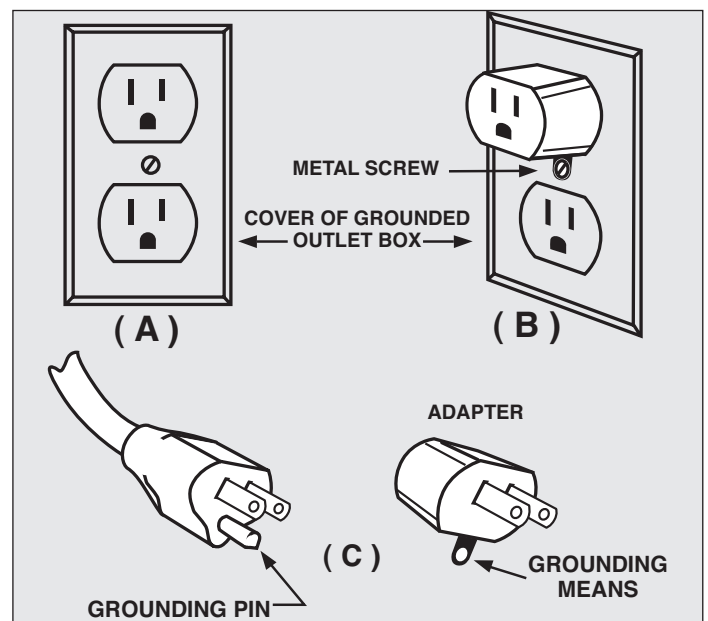
These guidelines are presented for your protection and convenience. Please read them carefully, since a failure to heed these precautions could result in discomfort or injury. When using an electrical appliance, basic safety precautions should always be followed.

ONE LAST REMINDER!

Read All Instructions, Warnings and Cautions Before Using!

WARNING

TO AVOID FIRE, DO NOT USE WITH A FLAMMABLE OR COMBUSTIBLE LIQUID TO CLEAN FLOOR.



UNCRATING

Your *Powr-Flite* Ultra High Speed Burnisher was protectively packed to prevent damage in shipment. We suggest that upon removing the unit from its carton, you carefully inspect it for any possible damage in transit. If damage is discovered, immediately notify the transportation company who delivered your machine. As a manufacturer, we are unable to act upon any claim for concealed damage; you must originate the claim.

IMPORTANT SAFEGUARDS

This machine is designed to be safe when used to perform the functions specified in this Operator's Manual. Should damage occur to electrical or mechanical parts, the machine should be repaired by the manufacturer or competent service station before using in order to avoid further damage to the machine or physical injury to user. Your floor machine is equipped with a safety switch lockout device designed for your safety. Do not attempt to bypass or defeat the safety lockout device. Never use any device to lock the power switch triggers in the ON position.

INSTRUCTIONS

Application

The M1200-3, M1600-3 and M2000-3 Ultra High Speed Burnishers are used to achieve and/or maintain a high gloss appearance on an established floor finish. The high pad revolution of the floor burnisher combined with a good polishing pad will turn properly established cleaned floor finish into a high gloss, hardened finish known as the "wet look shine". The pads recommended with the M1200-3, M1600-3 and M2000-3 are the Powr-HD beige or white synthetic pads or the natural hogs hair blended pads.

Preparation of Surface

Before each use of this machine, the floor must be dust mopped with a treated mop and if necessary clean the floor with a damp mop, using a solution of water and neutral cleaner.

PREPARE THE MACHINE FOR OPERATION

WARNING: To prevent injury, always remove the electrical plug from the electrical outlet before changing the polishing pad and before leaving the machine.

- With the handle locked, tip the machine back until the handle is lying flat on the floor.
- To remove the pad-lock pad holder from the flexible pad driver, grasp the center support with your thumb and forefinger and turn the collar counter-clockwise. **(Fig 1)**
- Place a clean or new 20" buffing pad over the alignment ring on the pad holder.
- Replace the collar by turning clockwise until snug. **(Fig 2)**
- Step back and lift the burnisher to the upright position.
- Connect the power cord into a grounded, 3-wire outlet.
- The M1200-3 and M1600-3 Burnishers should be operated with the handle in the unlocked "floating" position to provide excellent maneuverability and automatic pad contact.

The M2000-3 is designed for maintenance of large, open areas. To prevent excessive pad drag or uneven burnishing where tight, repetitive turns are necessary, lock the handle for manual control of pad contact.

NOTE: The hardened steel cam release lever does not require extreme tightening to effectively hold the handle in position. Over-tightening will shorten the functional life of the lever. **(Fig 3)**

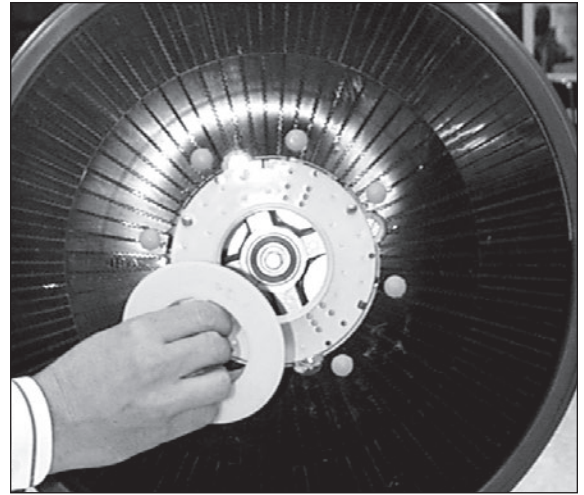


Fig 1



Fig 2

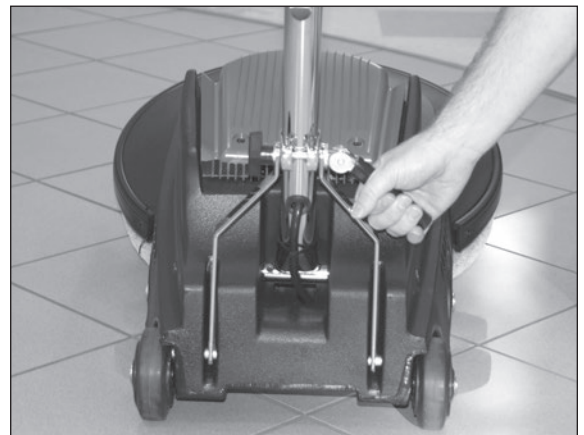


Fig 3

HOW TO OPERATE THE MACHINE

- Plug the machine in as directed and lower the handle to the desired operating height and lock in place using the cam lever handle. Push the safety switch forward (**Fig 4**) and squeeze the switch triggers beneath the handle grips. This activates the motor and starts the block, brush or attachment in operation. Each time you release the triggers the safety switch will reset. You will need to follow the direction above to restart the machine. **CAUTION:** *When leaving the machine unattended, disconnect the wall plug and return the handle to the "locked" upright position to prevent accidental starting.*
- Push the machine forward in a straight line, at a slow walking speed. Overlap each pass by about 1 inch (25 mm).

AFTER USING THE MACHINE

- Upon completion, dust mop with treated mop to pick up all burnishing residue.
- The condition of the floor pad has direct affect on the performance of your burnisher. When the pad becomes dirty, turn it over and use the other side. When finished, wash the pad out and allow it to dry completely before using again.
- Unplug the power cord and wrap it under the cord hook and over the right handle grip.
- Tip the machine back and remove floor pad.
- Wipe off the machine housing and the cord. This will prevent build-up of unnecessary residue.

TRANSPORTING

Use the rear wheels for transporting the M1200-3, M1600-3 or M2000-3. This will insure that the operating wheels remain clean and smooth for use on clean floor surfaces. (Fig 5)

MAINTENANCE

- Once a month, remove the motor cover of the unplugged M1200-3, M1600-3 or M2000-3 by removing the motor cover screws.
- Vacuum out any dust or debris which has accumulated in the motor. (Fig 6)
- Replace motor cover and replace the motor cover screws.
- Check and maintain tightness of all fasteners.
WARNING: do not over-tighten switch housing screws.
- Keep the burnisher clean, especially at the handle tube and collar so the handle tube will move freely through the collar.
- Inspect cord and plug for cuts, gashes or loose prongs; replace as needed.
- The length of the carbon brushes should be inspected annually. If they are no longer extended past the holder window, they should be replaced.
- Replacement of carbon brushes should be done only by a qualified service technician.
- **Disassembly of this motor voids the warranty.**
- Improper disassembly and assembly of this motor can permanently damage the armature.

Drive Belt Adjustment

See picture Fig 7

1. Remove three (3) phillips head screws holding the pad center grip.
2. Remove four (4) large, slot head screws holding drive pad.
3. Loosen pulley mount bolts (**A**) with 9/16" deep socket wrench.
Do not remove the bolts.
4. Using a 1/2 box wrench, turn adjustment nut (**B**) until it touches the adjustment bolt head. Turn the adjustment bolt to tighten or loosen the belt tension.
5. Correct belt tension allows belt (**C**) no more than 1/4" of side movement.
6. Tighten the four (4) pulley mount bolts with the 9/16" socket wrench.
7. Loosen the adjusting bolt (**D**) until it is snug against adjustment stop molded in housing and turn adjustment nut against pulley mount bracket.
8. Replace pad driver and pad center grip.

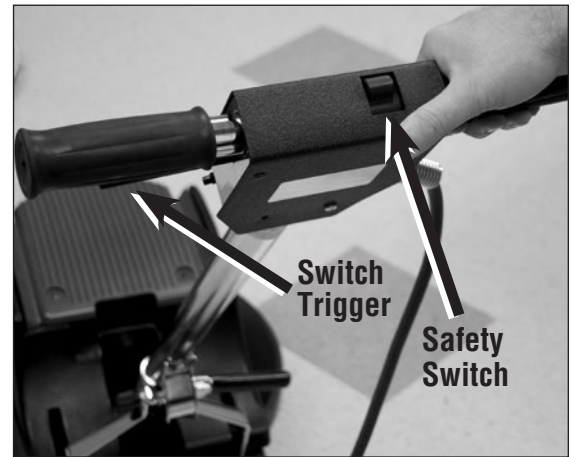


Fig 4

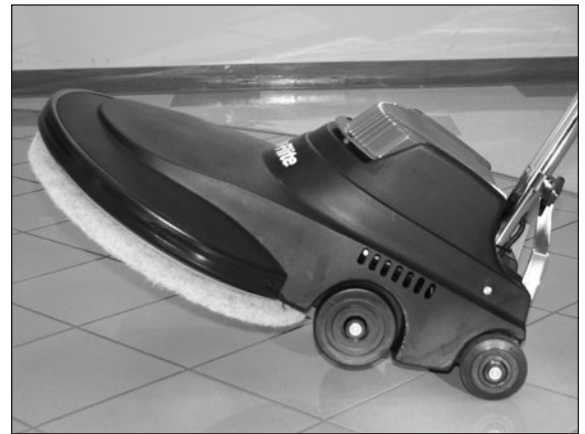


Fig 5

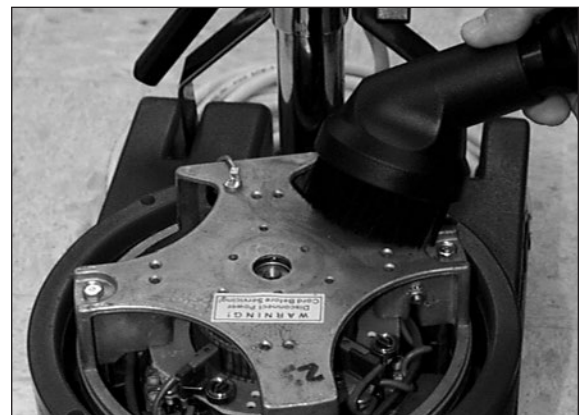


Fig 6

TROUBLESHOOTING

Burnisher tends to move to the right.

- Do not lift up on handle while operating the burnisher.
- Do not operate with handle set too high. Recommended handle height is from your waist with your arms extended forward.

Burnisher does not run.

- Circuit breaker has tripped. Allow circuit breaker to cool two minutes before resetting (M1200-3 only).

Prevent circuit overload.

- Do not spray buff with the M1600-3 or M2000-3. Apply a restorer, such as Powr-Gloss®, allow to dry, then burnish.
- Check pad and change if dirty or rough.
- Check area being burnished for cleanliness, area should be damp mopped, scrubbed or swept with treated broom.
- Operator should not continually force the machine with handle pressure.
- Operator should not try to operate burnisher in a side-to-side motion.
- Eliminate any extension cord that is smaller than 12/3 wire or greater than 25 feet in length.

Burnisher will not start.

- Circuit breaker is not reset. Allow two minutes to cool. Reset breaker. (M1200-3 only)
- Plug is broken or has loose contact. Replace.
- Circuit breaker is defective or weak. Replace. (M1200-3 only)
- Switch is defective. Replace switch.
- Rectifier is defective. Replace.

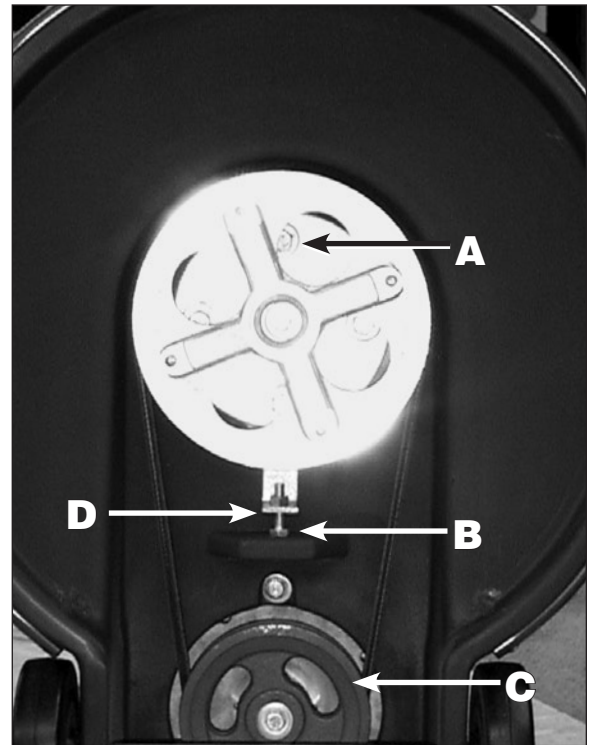
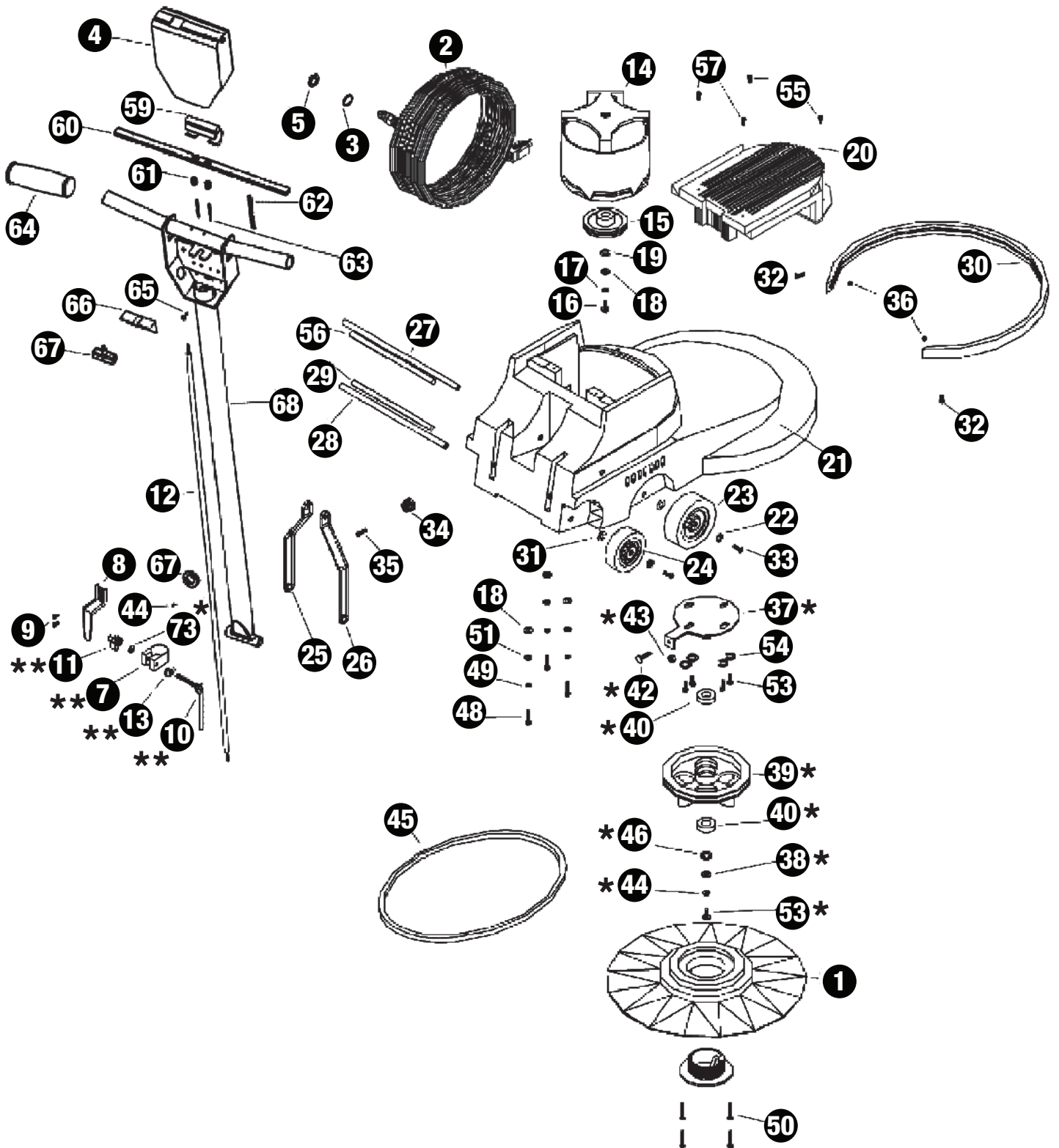


Fig 7

Models M1200-3, M1600-3 and M2000-3



ref#	order	description
1	X8862	flexible pad driver kit
2	M1407G	12/3 SJTW, gray cord
3	SR36	strain relief washer
4	X8912	switch box cover
5	X8008N	nut, lock, 1/2" steel
6	X8023	circuit breaker 17A w/nuts
**	X8012A	collar clamp assembly
7	X8012	clamp, collar, handle **
8	X8013	cord hook, plated
9	X8207	screw, 10-24 x 1/2", phil pan head (2)
10	X8014	cam lever handle **
11	X8016	knob, plastic, handle clamp **
12	X8022	in-line cord, 14/3 SJTW 49"
13	X8028	oval cam washer **
14	X8037-1	1.5 hp gear motor assembly
15	X9298	main pulley M1200-3
	X8889	main pulley M1600-3
	X8097-3	main pulley M2000-3
16	X8216	screw, 5/16-18 x 1-2" phil flat
17	X8217	split lock washer 5/16"
18	X8219	flat washer 3/8" SAE
19	X8230	flat washer 3/8" USS
20	X8041A	motor cover
21	X8050AP	black housing
22	X8020	washer, countersunk, axle
23	X8024	wheel black, 5"
24	X8935	wheel black, 4"
25	X8027L	handle brace w/slot
26	X8027R	handle brace w/hole
27	X8816	axle, 1/2" x 14-1/2"
28	X8936	axle, 1/2" x 13-3/4"
29	X8813	pivot shaft, 1/2" x 10"
30	X8030J	bumper, blue/black
31	X8101	spring washer 1" OD X 1/2 ID
32	X8821	8-32 x 3/4" bolt phil
33	X8265	1/4-20 x 3/4" screw
34	X8258A	polyethylene bumper
35	X8258AS	#8 screw x 1" phil pan head
36	X8822	bumper insert
*	X8096A	main pulley assembly
37	X8096	main pulley *
38	X8230	3/8" flat washer *
39	X9327	5/16 x 3/4" hex cap screw *
40	X8227	5/16-18 x 1-1/4" hex cap screw *
41	X8231	5/16-18 hex nut
42	X8217	5/16 lock washer *

ref#	order	description
43	X8219	3/8" flat washer *
44	X8217	5/16 split lock washer
45	X8099-5	40.5" V-belt M2000-3 and M1600-3
	X8099-7	39.5" V-belt M1200-3
46	X8219	3/8" flat washer
48	X8226	1/4-20 x 1 1/4 hex head
49	X8212	1/4" spring lock washer
50	X8216	5/16-18 x 1 1/2" flat phillips (4)
51	X8218	5/16 washer, flat zinc
52	X8222	1/4-20 x 1/2" socket set screw
53	X8223	3/8-16 x 3/4" hex cap, screw grade 5* (4)
54	X8230	3/8" flat washer (4)
55	X8272	8-32 x 1/2", phil truss screw (2)
56	X8811	pivot shaft, 1/2" x 10-1/2"
57	X8821	8-32 x 3/4" phil truss screw (2)
59	X8914	trigger thumb actuation
60	X8917	metal trigger handle
61	X8916	metal handle return spring
62	X8915	trigger thumb actuation spring
63	X8918	trigger roll pin (2)
64	X8941	1" handle grip (2)
65	X8207	#10-24 x 1/2 phil pan screw (3)
66	X8923	insulation sheet
67	X1039	momentary switch 25a
68	X8911	1-1/2" dia. handle tube weldment
69	7BG004	7/16" diameter grommet
70	X8222	1/4-20 x 3/16" set screw
NOT ILLUSTRATED		
	X8512	carbon brush
	X8034-2	rectifier

Powr-Flite[®]

A Tacony Company

3101 Wichita Court • Ft. Worth, TX 76140-1755
1-800-880-2913 • Fax: 1-817-551-0719 • www.Powr-Flite.com