

Powr-Flite[®]

OPERATOR'S MANUAL & PARTS LIST

Ultra High Speed Burnishers



**1600 RPM
Model NM1600**

**2000 RPM
Model NM2000**

**2000 RPM
Model NM2000DC**

**WARNING: OPERATOR MUST READ AND UNDERSTAND THIS MANUAL
COMPLETELY BEFORE OPERATING THIS EQUIPMENT.**

Save These Instructions

Your new Pour-Flite® Ultra High Speed Burnisher will afford you many years of trouble-free operating satisfaction provided it is given proper care. Prior to packaging, your Pour-Flite® Ultra High Speed Burnisher was inspected by a Quality Control Technician.

WARNINGS

READ THIS OPERATOR'S MANUAL!

- WARNING:** You must have training in the operation of this machine before using.
- WARNING:** Machines can burn flammable materials and vapors. Do not use this machine with or near fuels, grain dust, solvents, thinners or other flammable materials.
- WARNING:** Do not operate this machine unless it is completely assembled.
- WARNING:** Do not use this machine as a step or to move furniture.
- WARNING:** When disconnecting power cord from electrical outlet, grasp the plug. Pulling it out by the cord itself can damage cord insulation and internal connection to plug. To prevent electric shock, always remove the electrical plug from the electrical outlet before doing any repairs or maintenance to this machine.
- WARNING:** To prevent injury, always remove the electrical plug from the electrical outlet before changing the polishing pad and before leaving the machine.
- WARNING:** To prevent injury, keep hands, feet and loose clothing away from the rotating pad.
- WARNING:** Maintenance and repairs must be done by authorized personnel only.
- WARNING:** Keep all fasteners tight. Keep adjustments according to specifications.
- WARNING:** Keep the electrical parts of the machine dry. For storage, keep the machine in a building.
- WARNING:** Always use a three-wire electrical system connected to the electrical ground. For maximum protection against electric shock, use a circuit that is protected by a ground fault circuit interrupter. Consult with your electrical contractor.
- WARNING:** To prevent damage to the power cord, do not let the pad, pad driver or wheels touch the power cord when the machine is running. Always lift the power cord over the machine.
- WARNING:** Make sure all labels, decals, warning, cautions and instructions are fastened to the machine.

SAFETY INSTRUCTIONS

This Floor Machine should be grounded while in use to protect the operator from electric shock. This machine is equipped with a 3-conductor cord and a 3-prong grounded type attachment cap plug to fit the proper grounding type receptacle. The green (or green and yellow) conductor in the cord is the grounding wire. Never connect this wire to anything other than the grounding blade.

The Floor machine is provided with an attachment cap plug, as shown in Sketch A, and is intended for use on a nominal 120 volt circuit. If a properly grounded receptacle, as shown in Sketch A, is unavailable, an adaptor, as shown in Sketch C, is available and should be installed, as shown in Sketch B, if the outlet box that houses the receptacle is grounded. Be sure to fasten the grounding tap to the faceplate screw.

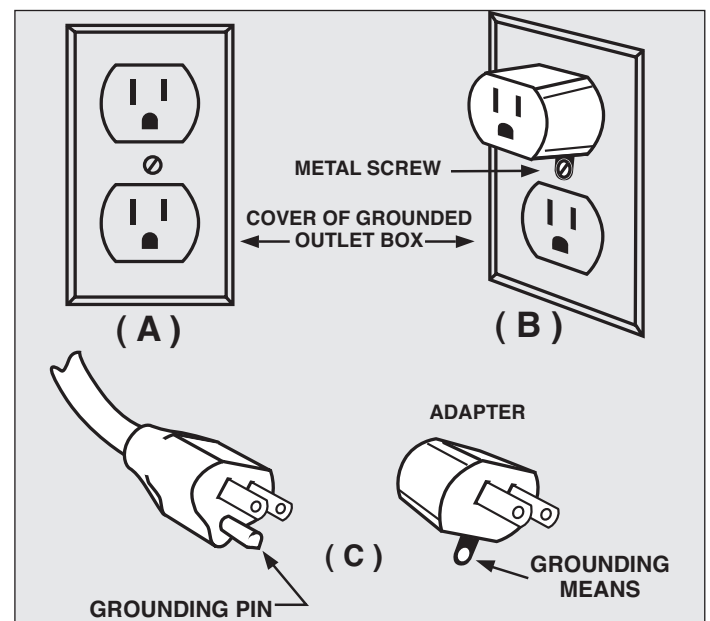
These guidelines are presented for your protection and convenience. Please read them carefully, since a failure to heed these precautions could result in discomfort or injury. When using an electrical appliance, basic safety precautions should always be followed.

ONE LAST REMINDER!

Read All Instructions, Warnings and Cautions Before Using!

WARNING

TO AVOID FIRE, DO NOT USE WITH A FLAMMABLE OR COMBUSTIBLE LIQUID TO CLEAN FLOOR.



UNCRATING

Your *Powr-Flite* Ultra High Speed Burnisher was protectively packed to prevent damage in shipment. We suggest that upon removing the unit from its carton, you carefully inspect it for any possible damage in transit. If damage is discovered, immediately notify the transportation company who delivered your machine. As a manufacturer, we are unable to act upon any claim for concealed damage; you must originate the claim.

IMPORTANT SAFEGUARDS

This machine is designed to be safe when used to perform the functions specified in this Operator's Manual. Should damage occur to electrical or mechanical parts, the machine should be repaired by the manufacturer or competent service station before using in order to avoid further damage to the machine or physical injury to user. Your floor machine is equipped with a safety switch lockout device designed for your safety. Do not attempt to bypass or defeat the safety lockout device. Never use any device to lock the power switch triggers in the ON position.

INSTRUCTIONS

Application

The NM1600, NM2000 and NM2000DC Ultra High Speed Burnishers are used to achieve and/or maintain a high gloss appearance on an established floor finish. The high pad revolution of the floor burnisher combined with a good polishing pad will turn properly established cleaned floor finish into a high gloss, hardened finish known as the "wet look shine". The pads recommended with the NM1600, NM2000 and NM2000DC are the Powr-HD beige or white synthetic pads or the natural hogs hair blended pads.

Preparation of Surface

Before each use of this machine, the floor must be dust mopped with a treated mop and if necessary clean the floor with a damp mop, using a solution of water and neutral cleaner.

PREPARE THE MACHINE FOR OPERATION

WARNING: To prevent injury, always remove the electrical plug from the electrical outlet before changing the polishing pad and before leaving the machine.

- With the handle locked, tip the machine back until the handle is lying flat on the floor.
- To remove the pad-lock pad holder from the flexible pad driver, grasp the center support with your thumb and forefinger and turn the collar counter-clockwise. (Fig 1)
- Place a clean or new 20" buffing pad over the alignment ring on the pad holder.
- Replace the collar by turning clockwise until snug. (Fig 2)
- Step back and lift the burnisher to the upright position.
- Connect the power cord into a grounded, 3-wire outlet.
- The NM1600 Burnishers should be operated with the handle in the unlocked "floating" position to provide excellent maneuverability and automatic pad contact.

The NM2000 and NM2000DC are designed for maintenance of large, open areas. To prevent excessive pad drag or uneven burnishing where tight, repetitive turns are necessary, lock the handle for manual control of pad contact.

NOTE: The hardened steel cam release lever does not require extreme tightening to effectively hold the handle in position. Over-tightening will shorten the functional life of the lever. (Fig 3)

CAUTION: Do NOT operate the Millennium dust-control burnisher (Item# NM2000DC) without a dust skirt.

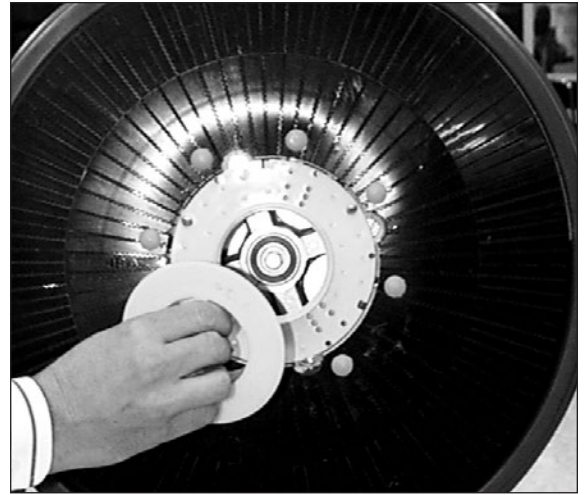


Fig 1



Fig 2



Fig 3

HOW TO OPERATE THE MACHINE

- Plug the machine in as directed and lower the handle to the desired operating height and leave the cam lever unlocked. Push the safety switch forward (**Fig 4**) and squeeze the switch triggers beneath the handle grips. This activates the motor and starts the block, brush or attachment in operation. Each time you release the triggers the safety switch will reset. You will need to follow the direction above to restart the machine. **CAUTION:** *When leaving the machine unattended, disconnect the wall plug and return the handle to the "locked" upright position to prevent accidental starting.*
- Push the machine forward in a straight line, at a slow walking speed. Overlap each pass by about 1 inch (25 mm).

AFTER USING THE MACHINE

- Upon completion, dust mop with treated mop to pick up all burnishing residue.
- The condition of the floor pad has direct affect on the performance of your burnisher. When the pad becomes dirty, turn it over and use the other side. When finished, wash the pad out and allow it to dry completely before using again.
- Unplug the power cord and wrap it under the cord hook and over the right handle grip.
- Tip the machine back and remove floor pad.
- Wipe off the machine housing and the cord. This will prevent build-up of unnecessary residue.

TRANSPORTING

Use the rear wheels for transporting the NM1600, NM2000 and NM2000DC. This will insure that the operating wheels remain clean and smooth for use on clean floor surfaces. (Fig 5)

MAINTENANCE

- Once a month, remove the motor cover of the unplugged NM1600, NM2000 and NM2000DC by removing the motor cover screws.
- Vacuum out any dust or debris which has accumulated in the motor. (Fig 6)
- Replace motor cover and replace the motor cover screws.
- Check and maintain tightness of all fasteners.
WARNING: do not over-tighten switch housing screws.
- Keep the burnisher clean, especially at the handle tube and collar so the handle tube will move freely through the collar.
- Inspect cord and plug for cuts, gashes or loose prongs; replace as needed.
- For the NM2000DC dust-control burnisher, periodic cleaning and filter/filter tube inspection for clogs, debris, and/or obstructions is recommended. If the filter is no longer serviceable, contact Powr-Flite for a replacement filter, P/N 19069.
- The length of the carbon brushes should be inspected annually. If they are no longer extended past the holder window, they should be replaced.
- Replacement of carbon brushes should be done only by a qualified service technician.
- **Disassembly of this motor voids the warranty.**
- Improper disassembly and assembly of this motor can permanently damage the armature.

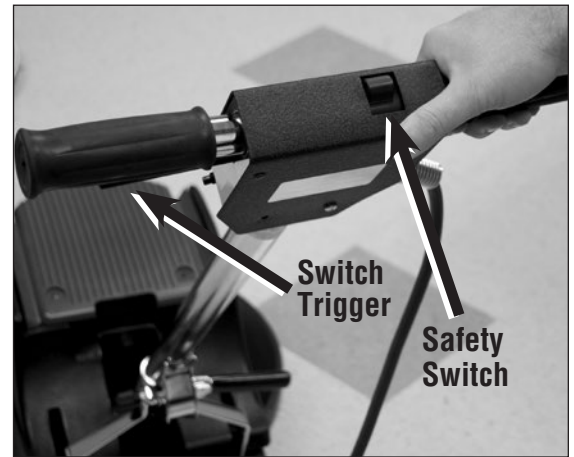


Fig 4



Fig 5

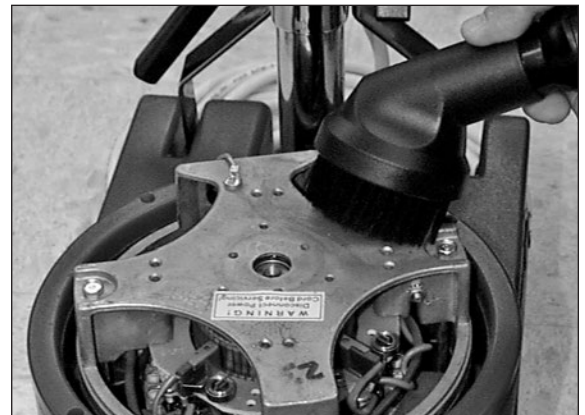


Fig 6

Drive Belt Adjustment

See picture Fig 7

1. Remove three (3) phillips head screws holding the pad center grip.
2. Remove four (4) large, slot head screws holding drive pad.
3. Loosen pulley mount bolts (A) with 9/16" deep socket wrench.
Do not remove the bolts.
4. Using a 1/2 box wrench, turn adjustment nut (B) until it touches the adjustment bolt head.
Turn the adjustment bolt to tighten or loosen the belt tension.
5. Correct belt tension allows belt (C) no more than 1/4" of side movement.
6. Tighten the four (4) pulley mount bolts with the 9/16" socket wrench.
7. Loosen the adjusting bolt (D) until it is snug against adjustment stop molded in housing and turn adjustment nut against pulley mount bracket.
8. Replace pad driver and pad center grip.

TROUBLESHOOTING

Burnisher tends to move to the right.

- Do not lift up on handle while operating the burnisher.
- Do not operate with handle set too high. Recommended handle height is from your waist with your arms extended forward.

Burnisher does not run.

- Circuit breaker has tripped. Allow circuit breaker to cool two minutes before resetting (NM2000 and NM2000DC only).

Prevent circuit overload.

- Do not spray buff with the NM1600, NM2000 and NM2000DC. Apply a restorer, such as Powr-Gloss®, allow to dry, then burnish.
- Check pad and change if dirty or rough.
- Check area being burnished for cleanliness, area should be damp mopped, scrubbed or swept with treated broom.
- Operator should not continually force the machine with handle pressure.
- Operator should not try to operate burnisher in a side-to-side motion.
- Eliminate any extension cord that is smaller than 12/3 wire or greater than 25 feet in length.

Burnisher will not start.

- Plug is broken or has loose contact. Replace.
- Switch is defective. Replace switch.
- Rectifier is defective. Replace.

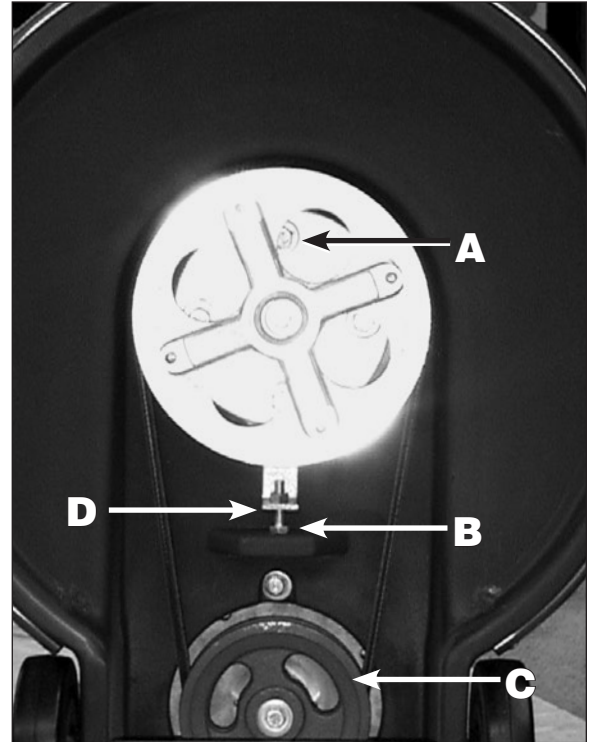
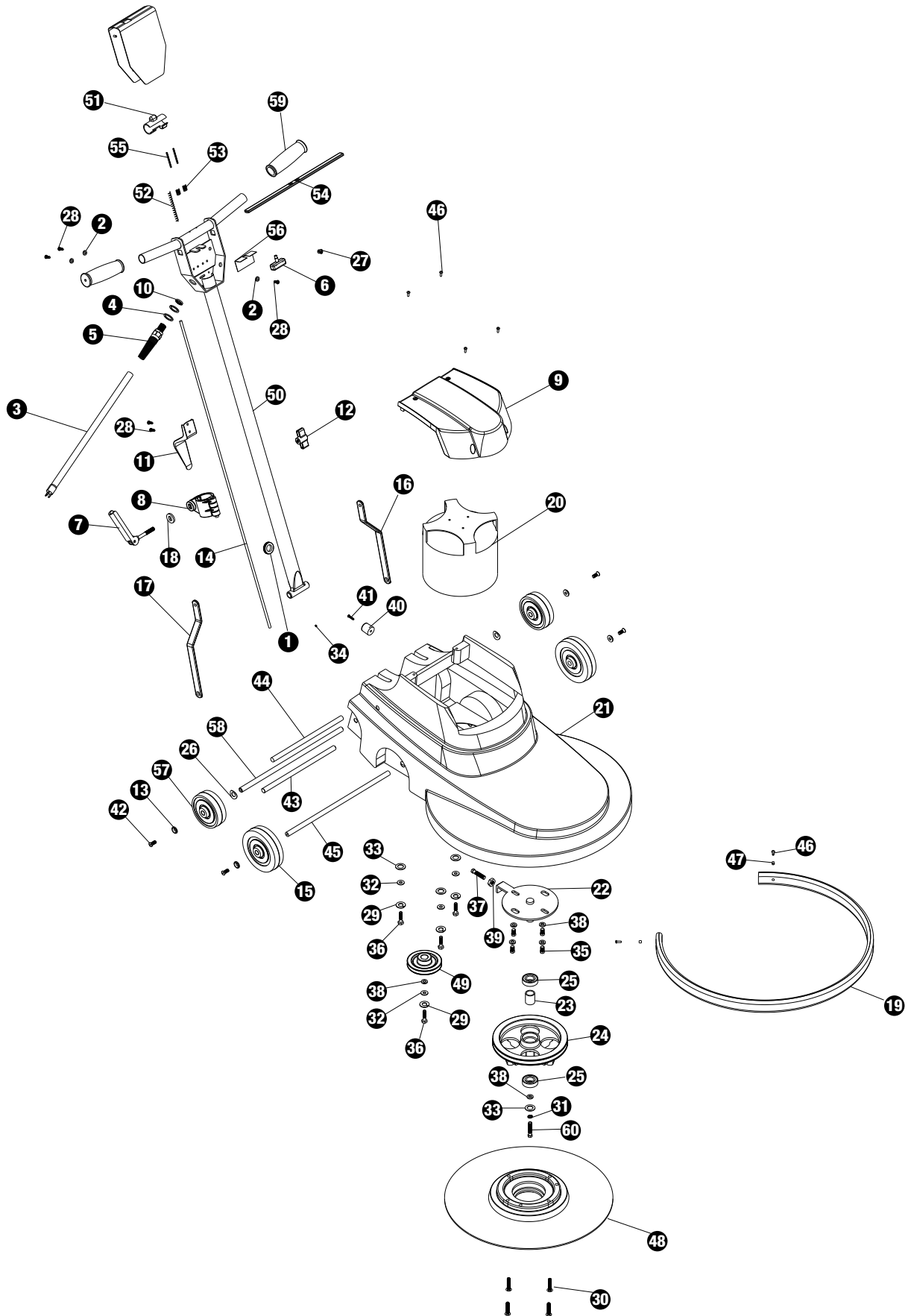


Fig 7

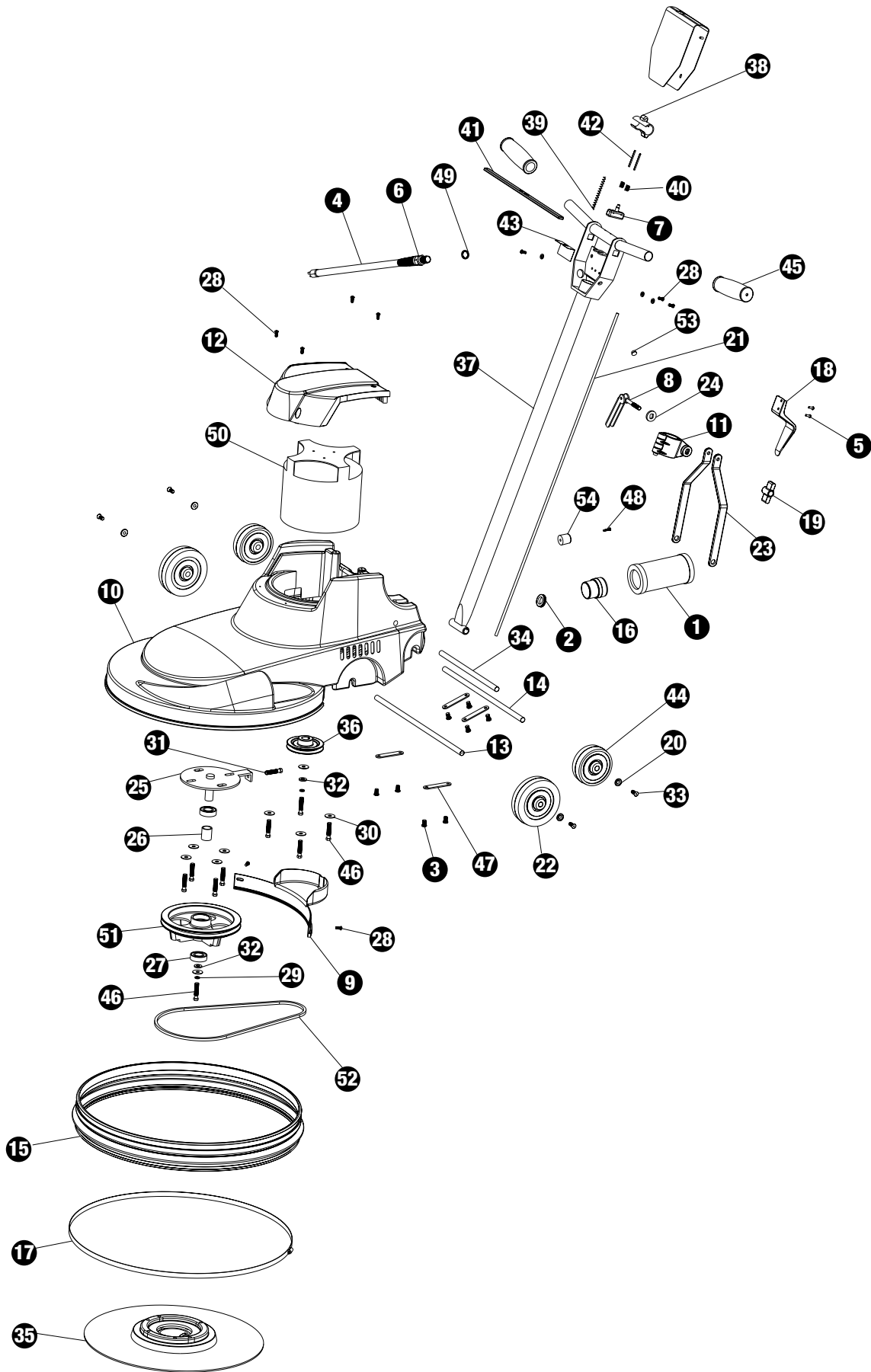
Models NM1600, NM2000



ref#	order	description	QTY
1	7BG004	Grommet	1
2	7CY001	Washer #10	3
3	M1407G	Cord	1
4	SR36	Strain relief washer	2
5	SR37	Strain relief	1
6	X1039	Switch 25a 1.5Hp	1
7	X1184	Cam lever	1
8	X1456	Handle clamp assembly	1
9	X1457	Motor cover, m series, blue	1
10	X8008N	Steel conduit	1
11	X8013	Cord hook	1
12	X8016	Knob	1
13	X8020	Washer, countersunk, axle	4
14	X8022	Inline cord	1
15	X8024	Wheel black 5" x 1-1/4"	2
16	X8027L	Bracket brace handle, left	1
17	X8027R	Bracket brace handle	1
18	X8028	Washer, cam w/slot	1
19	X8030J	Bumper	1
20	X8037-TI	Motor 120v	1
21	X8050AP	Housing, black	1
22	X8091	Shaft and plate weldment	1
23	X8092	Bearing spacer	1
24	X8096	Main pulley	1
25	X8098	Bearing	2
26	X8101	Wave spring washer	2
27	X8151B	Plug	1
28	X8207	Screw 10-24 x 1/2 phil pan	5
29	X8212	Washer-lock (1/4")	4
30	X8216	Screw 5/16-18 x 1-1/2 phil flat	4
31	X8217	5/16 Spring washer	1
32	X8218	Washer 5/16 sae flat zinc	4
33	X8219	Washer 3/8 sae flat zinc	4
34	X8222	Set screw	1
35	X8223	Screw 3-8/16 x 3/4 hex cap	4
36	X8226	Screw 1/4-20 x 1-1/4" hex head cap zinc plated	4
37	X8227	Bolt 5/16-18 x 1 1/4 hex tap	1
38	X8230	Washer 3/8 uss flat zinc	6
39	X8231	Nut 5/16 hex finish zinc	1
40	X8258A	Bumper	1
41	X8258AS	Screw	1
42	X8265	Screw 1/4-20 x 3/4 flat phil	4
43	X8811	Pivot shaft handle	1
44	X8813	Pivot shaft brace	1
45	X8816	Axle 1/2" x 14-1/2"	1
46	X8821	Screw, #8-32 x 1/2", pnhd, ph, zp	6

ref#	order	description	QTY
47	X8822	Spacer	2
48	X8862	Flexible pad driver kit	1
49	X8889 / X9298	1600 Rpm pulley / 2000 rpm pulley	1
50	X8911	Handle	1
51	X8914	Thumb switch actuator	1
52	X8915	Spring thumb actuator	1
53	X8916	Spring trigger	2
54	X8917	Trigger handle	1
55	X8918	Roll pin	1
56	X8922	Insulation sheet	1
57	X8935	Wheel 4x1-1/2", black	2
58	X8936	Axle 13 3/4' x 1/2'	1
59	X8941	Handle grip	2
60	X9327	Screw 5/16 x 3/4 hex cap	1

Models NM2000DC



ref#	order	description	QTY
1	19069	Filter	1
2	7BG004	Grommet	1
3	7BS003	Screw 1/4-20 x 1/2 phil pan	8
4	M1407G	Cord 12/3 sjtw 75' gray	1
5	PX73	Screw, #8-32 x 1/2", pnhd, ph, zp	2
6	SR37	Strain relief	1
7	X1039	Switch 25a 1.5Hp	1
8	X1184	Cam lever handle	1
9	X1454	Pulley cover, dust control	1
10	X1455	Housing, 20" dust control	1
11	X1456	Handle clamp assembly	1
12	X1457	Motor cover, m series, blue	1
13	X1459	Axle, wheel, 1/2" x 16.475"	1
14	X1460	Axle, wheel, 1/2" x 15.25"	1
15	X1461	Skirt, 20" dust control	1
16	X1465	Tube, filter smt dust control	1
17	X1469	Clamp	1
18	X8013	Cord hook	1
19	X8016	Knob	1
20	X8020	Washer, countersunk, axle	4
21	X8022	Inline cord 49" 14/3	1
22	X8024	Wheel black 5" x 1-1/4"	2
23	X8027	Brace	2
24	X8028	Washer, cam, slotted	1
25	X8091	Shaft and plate weldment	1
26	X8092	Bearing spacer	1
27	X8098	Bearing ball rubber	2
28	X8207	Screw 10-24 x 1/2 phil pan	9
29	X8217	Washer, split lock	5
30	X8219	Washer 3/8 sae flat zinc	9
31	X8227	Bolt 5/16-18 x 1 1/4 hex tap	1
32	X8230	Washer 3/8 uss flat zinc	2
33	X8265	Screw 1/4-20 x 3/4 flat phil	4
34	X8811	Pivot shaft handle	1
35	X8862	Flexible pad driver kit	1
36	X8889 X9298	"1600 O-groove pulley	1
37	X8911	2000 O-groove pulley"	1
38	X8914	Handle	1
39	X8915	Thumb switch actuator	1
40	X8916	Spring thumb actuator	2
41	X8917	Spring trigger	1
42	X8918	Trigger handle	1
43	X8922	Roll pin	1
44	X8935	Insulation sheet	2
45	X8941	Wheel 4x1-1/2", black	2
46	X9327	Handle grip 1"	9

ref#	order	description	QTY
47	X9444	Screw 5/16 x 3/4 hex cap	4
48	X9676	Front strap	1
49	X8008N	8-18 3/4 Long hi lo screw	1
50	X8037-TI	Nut, lock, 1/2" steel	1
51	X8096A	Burnisher motor 120v ti	1
52	X8099-5	Pulley	1
53	X8151B	Belt 40.5"	1
54	X8258A	Plug plastic black bumper	1

Powr-Flite[®]

A Tacony Company

3101 Wichita Court • Ft. Worth, TX 76140-1755
1-800-880-2913 • Fax: 1-817-551-0719 • www.Powr-Flite.com