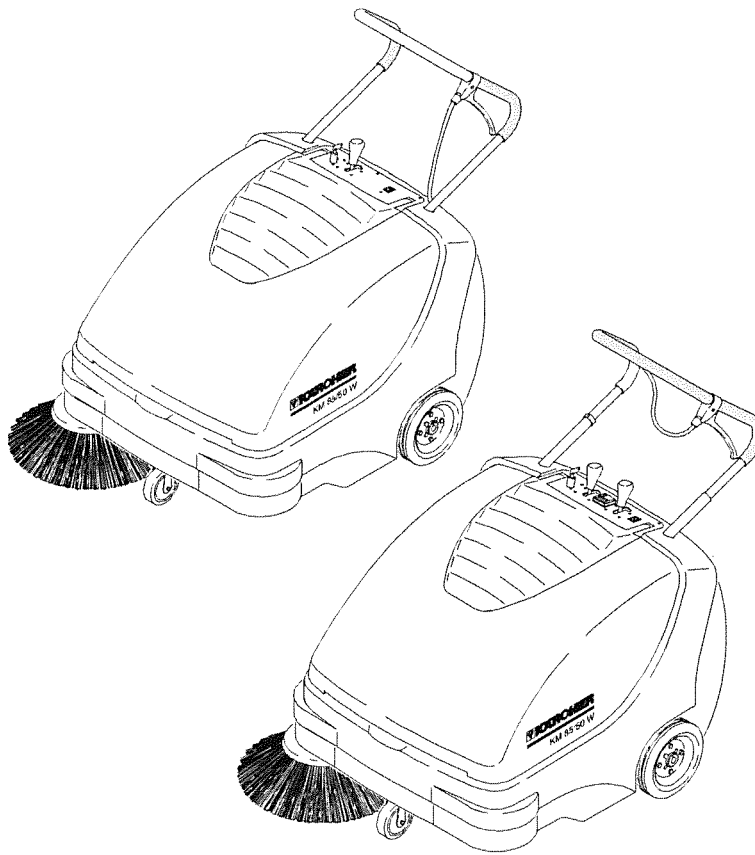


KM 85/50 W Classic
KM 85/50 W Comfort
KM 85/50 W P Classic
KM 85/50 W P Comfort



Deutsch	3
English	14
Français	25
Italiano	37
Nederlands	49
Español	60
Português	72
Dansk	84
Norsk	95
Svenska	106
Suomi	117
Ελληνικά	128
Türkçe	140
Русский	151
Magyar	163
Čeština	175
Slovenščina	187
Polski	198
Românește	210
Slovenčina	222
Hrvatski	234
Srpski	246
Български	258
Eesti	270
Latviešu	281
Lietuviškai	293
Українська	305

Register and win!
www.karcher.com





Please read and comply with these original instructions prior to the initial operation of your appliance and store them for later use or subsequent owners.

Before first start-up it is definitely necessary to read the safety indications Nr. 5.956-250!

Contents

Safety instructions	EN - 1
Function	EN - 2
Proper use	EN - 2
Environmental protection	EN - 2
Operating and Functional Elements	EN - 3
Before Startup	EN - 4
Start up	EN - 5
Operation	EN - 5
Shutdown	EN - 6
Maintenance and care	EN - 6
Accessories	EN - 9
Troubleshooting	EN - 10
CE declaration	EN - 10
Warranty	EN - 10
Technical specifications	EN - 11

Safety instructions

General notes

Your sales outlet should be informed about any transit damage noted when unpacking the product.

- Warning and information plates on the machine provide important directions for safe operation.
- In addition to the information contained in the operating instructions, all statutory safety and accident prevention regulations must be observed.

Drive mode

⚠ Danger

Risk of injury!

Danger of tipping if gradient is too high.

- *The gradient in the direction of travel should not exceed 2%.*

Comfort model with additional brake 2.640-301.0: The gradient in the direction of travel should not exceed 15%.

Danger of tipping on unstable ground.

- *Only use the machine on sound surfaces.*

Danger of tipping with excessive sideways tilt.

- *The gradient perpendicular to the direction of travel should not exceed 2%.*

Comfort model with additional brake 2.640-301.0: The gradient perpendicular to the direction of travel should not exceed 15%.

- It is important to follow all safety instructions, rules and regulations applicable for driving motor vehicles.
- The operator must use the appliance properly. He must consider the local conditions and must pay attention to third parties, in particular children, when working with the appliance.

- The appliance may only be used by persons who have been instructed in handling the appliance or have proven qualification and expertise in operating the appliance or have been explicitly assigned the task of handling the appliance.

- The appliance must not be operated by children, young persons or persons who have not been instructed accordingly.

→ Please remove the key from the main switch when not in use to avoid unauthorised use of the appliance.

→ Never leave the machine unattended so long as the engine is running. The operator may leave the appliance only when the engine has come to a standstill, the appliance has been protected against accidental movement, the immobilisation brake has been applied and the main switch key has been removed.

Battery-operated machines

Note: Warranty claims will be entertained only if you use batteries and chargers recommended by Kärcher.

- Always follow the instructions of the battery manufacturer and the charger manufacturer. Please follow the statutory requirements for handling and disposing batteries.
- Never leave the batteries in a discharged state; recharge them as soon as possible.
- Always keep the batteries clean and dry to avoid creep currents. Protect the batteries and avoid contact with impurities such as metal dust.
- Do not place tools or similar items on the battery. Risk of short-circuit and explosion.
- Do not work with open flames, generate sparks or smoke in the vicinity of a battery or a battery charging room. Danger of explosion.
- Do not touch hot parts of the machine such as the drive motor (risk of burns).
- Be careful while handling battery acid. Follow the respective safety instructions!
- Used batteries are to be disposed according to the EC guideline 91/ 157 EWG in an environment-friendly manner.

Accessories and Spare Parts

- Only use accessories and spare parts which have been approved by the manufacturer. The exclusive use of original accessories and original spare parts ensures that the appliance can be operated safely and troublefree.
- At the end of the operating instructions you will find a selected list of spare parts that are often required.
- For additional information about spare parts, please go to the Service section at www.kaercher.com.

Symbols in the operating instructions

⚠ Danger

Immediate danger that can cause severe injury or even death.

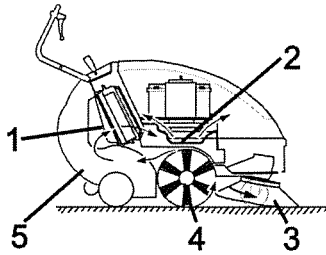
⚠ Warning

Possible hazardous situation that could lead to severe injury or even death.

Caution

Possible hazardous situation that could lead to mild injury to persons or damage to property.

Function



The sweeper operates using the overthrow principle.

- The side brushes (3) clean the corners and edges of the surface, moving dirt and debris into the path of the roller brush.
- The rotating roller brush (4) moves the dirt and debris directly into the waste container (5).
- The dust raised in the container is separated by the dust filter (1) and the filtered clean air is drawn off by the suction fan (2).

Proper use

Use this sweeper only as directed in these operating instructions.

- The machine with working equipment must be checked to ensure that it is in proper working order and is operating safely prior to use. Otherwise, the appliance must not be used.
- This sweeper has been designed to sweep dirt and debris from indoor as well as outdoor surfaces.
- The appliance is not intended for the cleaning of public traffic routes.
- The machine is not suitable for vacuuming dust which endangers health.
- The machine may not be modified.
- Never vacuum up explosive liquids, combustible gases or undiluted acids and solvents. This includes petrol, paint thinner or heating oil which can generate explosive fumes or mixtures upon contact with the suction air. Acetone, undiluted acids and solvents must also be avoided as they can harm the materials on the machine.
- Do not sweep/vacuum up any burning or glowing objects.
- The machine is only suitable for use on the types of surfaces specified in the operating instructions.
- The machine may only be operated on the surfaces approved by the company or its authorised representatives.
- The machine may not be used or stored in hazardous areas. It is not allowed to use the appliance in hazardous locations.
- The following applies in general: Keep highly-flammable substances away from the appliance (danger of explosion/fire).

Suitable surfaces

- Asphalt
- Industrial floor
- Screed
- Concrete
- Paving stones

Environmental protection



The packaging material can be recycled. Please do not throw the packaging material into household waste; please send it for recycling.



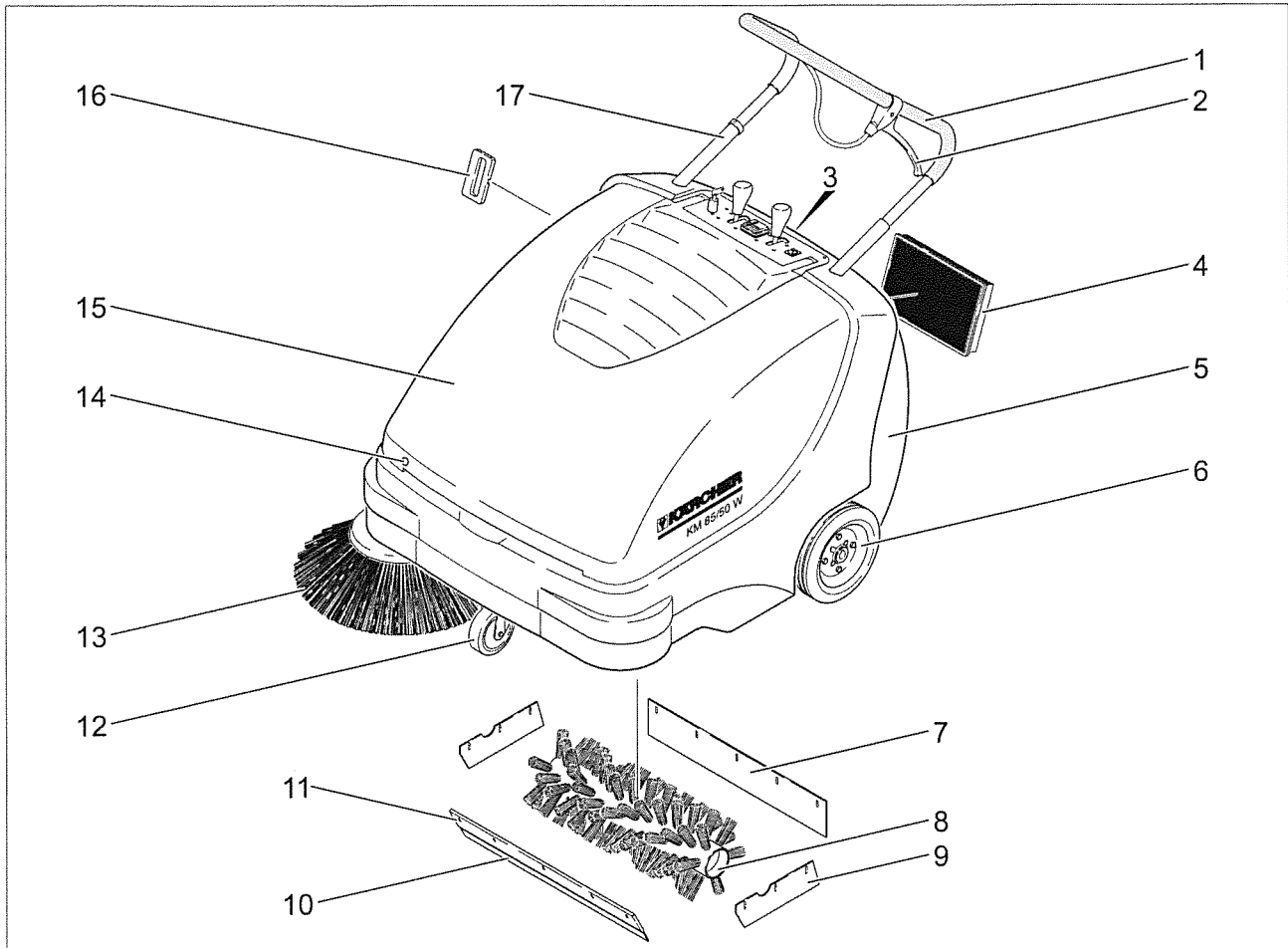
Old appliances contain valuable materials that can be recycled; these should be sent for recycling. Batteries and accumulators contain substances that must not enter the environment. Please dispose of old devices, batteries and rechargeable batteries through suitable waste collection systems.

Notes about the ingredients (REACH)

You will find current information about the ingredients at:

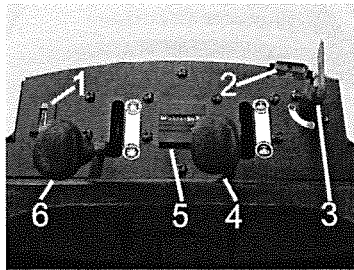
<http://www.karcher.de/de/unternehmen/umweltschutz/REACH.htm>

Operating and Functional Elements



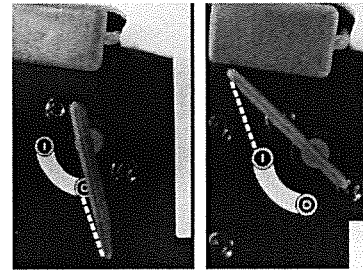
- 1 Push handle
- 2 Lever for lowering and raising the bulk waste flap
- 3 Waste container lock
- 4 Dust filter
- 5 Waste container
- 6 Drive wheels
- 7 Rear sealing strip
- 8 Roller brush
- 9 Side sealing strip
- 10 Front sealing strip
- 11 Bulk waste flap
- 12 Guiding roll with fixed position brake
- 13 Side brushes
- 14 Cover lock
- 15 Cover
- 16 Filter cleaning for dust filter
- 17 Pushing handle lock (only Comfort model)

Operating field



- 1 Charging indicator for batteries
- 2 Battery charging bush (not with KM 85/50 W P Comfort, with the Classic model, on the back of the instrument panel)
- 3 Main switch
- 4 Raise/lower side-brushes
- 5 Operating hour counter (only Comfort model)
- 6 Raise/lower roller brush (only Comfort model)

Main switch



0	Motor off
1	Motor on

Remove the key:
Turn the main switch using "0" position and pull it out.

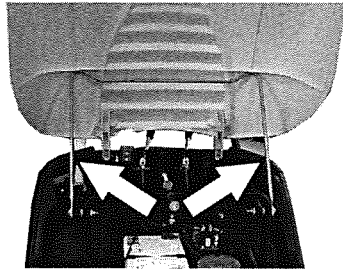
Colour coding

- The operating elements for the cleaning process are yellow.
- The controls for the maintenance and service are light gray.

Open the device hood.

Note: The hood is unlocked with the same key as the main switch. The key can only be removed if the hood is locked.

- Insert the main switch key in the hood lock and turn it by 180°.
- Open the device hood.



- Secure the appliance hood to the hood support to prevent it from closing.

Close device hood

- Remove hood support.
- Close cover.
- Close the device hood with the main switch key.

Before Startup

Unloading

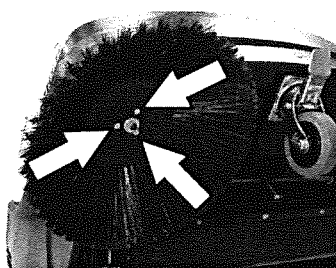
⚠ Danger

Risk of injury and damage! Do not use a forklift to unload the appliance.

- To unload the machine, proceed as follows:
- Cut plastic packing belt and remove foil.
 - Remove the wooden blocks that secure the wheels and raise the device from the pallette by hand.

Install side brush

- **Comfort model:** Rotate push handle clock in an anti-clockwise direction. Lock has been unlocked.
- Remove the waste container.
- Push appliance to the back onto the push handle.



- Clip side brush on to driver and screw on.
- Tilt the appliance forward.

Batteries

Safety notes regarding the batteries

Please observe the following warning notes when handling batteries:

	Observe the directions on the battery, in the instructions for use and in the vehicle operating instructions!
	Wear an eye shield!
	Keep away children from acid and batteries!
	Risk of explosion!
	Fire, sparks, open light, and smoking not allowed!
	Danger of causticization!
	First aid!
	Warning note!
	Disposal!
	Do not throw the battery in the dustbin!

⚠ Danger

Risk of explosion! Do not put tools or similar on the battery, i.e. on the terminal poles and cell connectors.

⚠ Danger

Risk of injury! Ensure that wounds never come into contact with lead. Always clean your hands after having worked with batteries.

⚠ Danger

Risk of fire and explosion!

- Smoking and naked flames are strictly prohibited.
- Rooms where batteries are charged must have good ventilation because highly explosive gas is emitted during charging.

⚠ Danger

Danger of causticization!

- Rinse thoroughly with lots of clear water if acid gets into the eye or comes in contact with the skin.
- Then consult a doctor immediately.
- Wash off the acid if it comes in contact with the clothes.

Install batteries

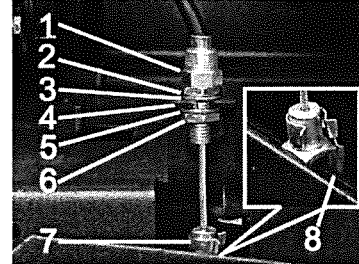
(only KM 85/50 W Classic and W Comfort)

Note: Recommended battery and charger, see Accessories.

- Open the device hood.
- Secure the appliance hood to the hood support to prevent it from closing.

Caution

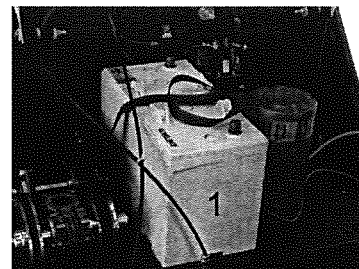
Risk of damage. Remove battery bowden cable from the holding plate.



- 1 Rating nut
- 2 Nut
- 3 Disc
- 4 Halting plate
- 5 Disc
- 6 Counter-nut
- 7 Fork head
- 8 Lever

Loosen the bowden cable:

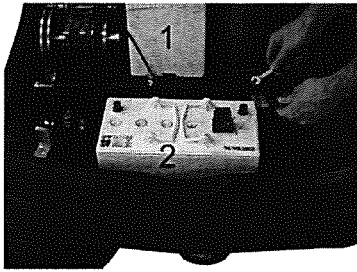
- Pull out the pin from the fork head and lever.
- Loosen counter-nut.
- Take off the rating nut from the halting plate.



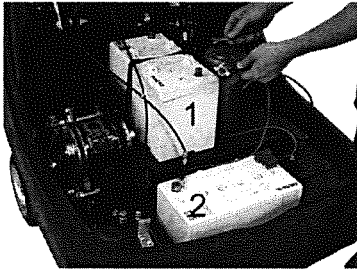
- Set the battery to motor carrier.
 - Secure the battery with the holder tape.
- Replace Bowden cable:
- Remount the rating nut from the halting plate.
 - Tighten counter nut.
 - Position the fork head on the lever and slide and secure the pin through the fork head and the lever.



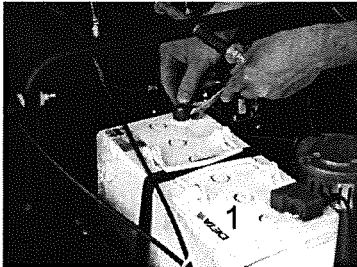
- Place the second battery into the battery holder.



- Connect pole terminal (red cable) to the positive pole (+) of the battery (2).



- Fit the connection wires to the batteries.



- Connect pole terminal to the negative pole (-) of the battery (1).

Note: Check that the battery pole and pole terminals are adequately protected with pole grease.

Caution

Charge the batteries before commissioning the machine.

Charge the batteries

⚠ Danger

Risk of injury! Comply with safety regulations on the handling of batteries. Observe the directions provided by the manufacturer of the charger.

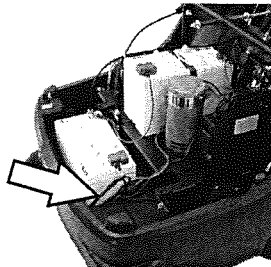
- Turn off the appliance.

■ KM 85/50 W Comfort

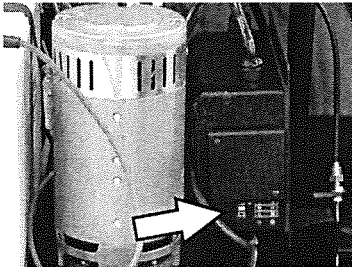


- Pull out the covering flap from the battery charging bush.
- Connect the charger plug.
- Plug in mains connector and switch on charger, if necessary.
- KM 85/50 W P Comfort
- Open the device hood.

- Secure the appliance hood to the hood support to prevent it from closing.



- Insert the plug of the integrated charger into the socket.

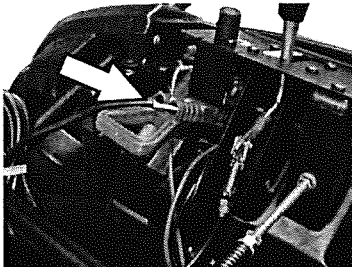


Battery charge status indicator

Batteries are being charged	Indicator lamp glows yellow
Batteries are charged	Indicator lamp glows green
Fault	Indicator lamp glows yellow

■ Classic model

- Open the device hood.
- Secure the appliance hood to the hood support to prevent it from closing.



- Connect the charger plug.
- Plug in mains connector and switch on charger, if necessary.

Removing the batteries

- Open the device hood.
- Secure the appliance hood to the hood support to prevent it from closing.
- Disconnect pole terminal on the negative pole (-) from the battery (1).
- Unscrew the connection wires from the batteries.
- Disconnect pole terminal on the positive pole (+) from the battery (2).
- Remove the second battery from the battery holder.
- Release the bowden cable (see "Installation the batteries").
- Loosen the fastening belt of the first battery.
- Remove the first battery from the motor support.
- Dispose of the used batteries according to the local provisions.

Start up

General notes

- Park the sweeper on an even surface.
- Switch off engine.
- Lock parking brake.
- Comfort model: Turn the push handle lock clockwise; lock is locked.

Inspection and maintenance work

- Check charging status of battery.
- Check side brush.
- Check roller brush.
- Shake off dust filter.
- Empty waste container.

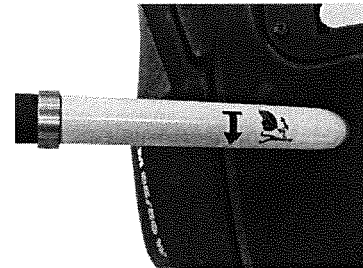
Note: For description, see section on Care and maintenance.

Operation

Starting the machine

Note: Start the appliance only when the hood is closed.

- Release parking brake.



Comfort model: Lock push handle (idle)

- Turn the push handle lock clockwise; lock is locked.

Appliance can be moved without drive.

- Turn the main switch to position "1".

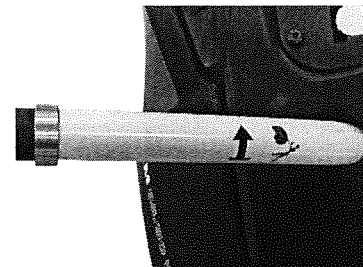
Note: The roller brush and the side brush will rotate.

Drive the machine

■ Comfort model

⚠ Danger

The appliance can drive forward and in reverse at the same speed. Therefore gently pull back the push handle when travelling in reverse.



- Turn the push handle lock counter-clockwise; lock is unlocked.

Drive forward

- Push the pushing handle to the front.

Reverse drive

- Pull the push handle backwards.

■ Classic model

Drive forward

- Push the pushing handle to the front.

Driving over obstacles

Driving over fixed obstacles which are 30 mm high or less:

- Raise bulk waste flap.
- Drive forwards slowly and carefully.

Driving over fixed obstacles which are more than 30 mm high:

- Only drive over these obstacles using a suitable ramp.

Sweeping mode

⚠ Danger

Risk of injury! If the bulk waste flap is open, stones or gravel may be flung forwards by the roller brush. Make sure that this does not endanger persons, animals or objects.

Caution

Do not sweep up packing strips, wire or similar objects as this may damage the sweeping mechanism.

Note: To achieve an optimum cleaning result, the driving speed should be adjusted to take specific situations into account.

Sweeping with bulk waste flap raised

Note: The bulk waste flap must be raised briefly to sweep up larger items (up to 50 mm high), e.g. soft drink cans.

Raising bulk waste flap:

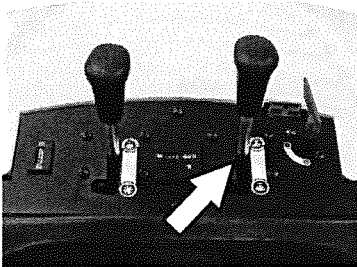
- Pull the lever for raising the bulk waste flap.

Lowering the bulk waste flap:

- Release the lever for raising the bulk waste flap.

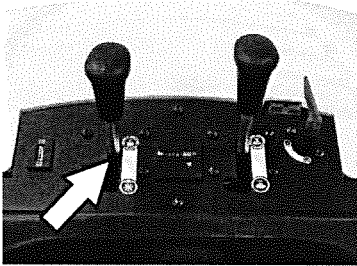
Note: An optimum cleaning result can only be achieved if the bulk waste flap has been lowered completely.

Sweeping with side brushes



- Loosen the lever lock. The side-brushes will be lowered.

Lower roller brush (only Comfort model)



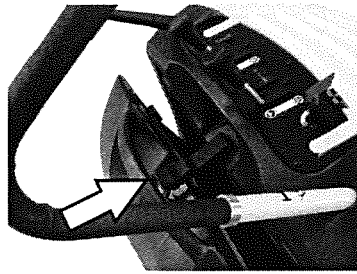
- Release locking device. Roller brush is lowered.

Sweeping dry floors

Note: During operation, the waste container should be emptied at regular intervals.

Note: During operation, the dust filter should be shaken off and cleaned at regular intervals.

Sweeping damp or wet floors



- Open the waste container lock and let it hang in.

The waste container will open by approx. 8 cm.

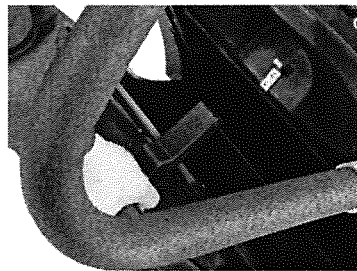
Note: This protects the filter from moisture.

Cleaning the dust filter

- Move the handle of the filter dedusting back and forth a few times.

Emptying waste container

- Shake off dust filter.
- Open the waste container lock.



- Hang out the lock.



- Pull out the waste container.
- Empty waste container.
- Push in the waste container.
- Hang in the waste container lock.
- Close the lock.

Note: The waste container is equipped with transport rollers.

Turn off the appliance.

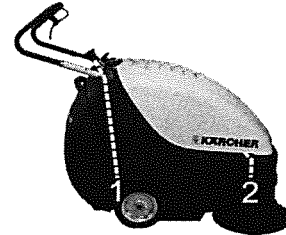
- Turn the main switch to position "0".
- Turn the main switch using "0" position and pull it out.
- The side-brushes lift up.
- Comfort model: Raise roller brush.
- Lock parking brake.

Transport

⚠ Danger

Risk of injury and damage! Observe the weight of the appliance when you transport it.

- Lock parking brake.
- Disconnect batteries.
- Secure the wheels of the machine with wheel chocks.
- Secure the machine with tensioning straps or cables.
- When transporting in vehicles, secure the appliance according to the guidelines from slipping and tipping over.
- Comfort model: Turn the push handle lock clockwise; lock is locked.



- 1 Fastening area above the pushing handle
- 2 Fastening area under the device hood

Note: Observe markings for fixing points on base frame (chain symbols).

Storage

⚠ Danger

Risk of injury and damage! Note the weight of the appliance in case of storage.

Shutdown

If the sweeper is going to be out of service for a longer time period, observe the following points:

- Park the sweeper on an even surface.
- Turn the main switch using "0" position and pull it out.
- Lock parking brake.
- Lock the sweeper to ensure that it does not roll off.
- Comfort model: Turn the push handle lock clockwise; lock is locked.
- Comfort model: Raise roller brush.
- The side-brushes lift up.
- Clean the inside and outside of the sweeper.
- Park the machine in a safe and dry place.
- Disconnect batteries.
- Charge battery and recharge it approx. every 2 months.

Maintenance and care

General notes

- Maintenance work may only be carried out by approved customer service outlets or experts in this field who are familiar with the respective safety regulations.
- Mobile appliances used for commercial purposes are subject to safety inspections according to VDE 0701.

Cleaning

Caution

Risk of damage! Do not clean the appliance with a water hose or high-pressure water jet (danger of short circuits or other damage).

Cleaning the inside of the machine

⚠ Danger

Risk of injury! Wear dust mask and protective goggles.

- Open the device hood.
- Clean machine with a cloth.
- Blow through machine with compressed air.
- Close cover.

External cleaning of the appliance

- Clean the machine with a damp cloth which has been soaked in mild detergent.

Note: Do not use aggressive cleaning agents.

Maintenance intervals

Operating hour counter

(only Comfort model)

Note: The elapsed-time counter shows the timing of the maintenance intervals.

Maintenance by the customer

Daily maintenance:

- Check the sweeping roller and the side brush for wear and wrapped belts.
- Check function of all operator control elements.
- Check functioning of all indicator lamps.

Weekly maintenance:

- Check tension, wear and tear and functioning of the drive belts and drive chain.
- Check for smooth running of the Bowden cables and the moveable parts
- Check sealing strips at the dust filter.
- Check functioning of the filter cleaning system.
- Check the sealing strips in the sweeping area for position and wear.
- Check the sweeping track of the sweeping roller.
- Check the function of the sweeping roller and the side brushes.
- Clean the dust filter.

Note: For description, see section on Maintenance work.

Note: Where maintenance is carried out by the customer, all service and maintenance work must be undertaken by a qualified specialist. If required, a specialised Archer dealer may be contacted at any time.

Maintenance by Customer Service

Maintenance to be carried out after 5 operating hours:

- Carry out initial inspection.

Maintenance to be carried out every 50 operating hours

Maintenance to be carried out every 100 operating hours

Maintenance to be carried out every 500 operating hours

Note: In order to safeguard warranty claims, all service and maintenance work during the warranty period must be carried out by the authorised Kärcher Customer Service in accordance with the maintenance booklet.

Maintenance Works

Preparation:

- Park the sweeper on an even surface.
- Turn the main switch using "0" position and pull it out.
- Lock parking brake.
- Comfort model: Turn the push handle lock clockwise; lock is locked.

General notes on safety

⚠ Danger

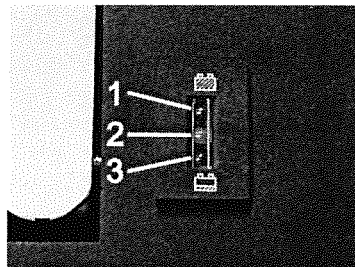
Risk of injury!

The engine requires approx. 3-4 seconds to come to a standstill once it has been switched off. During this time, stay well clear of the working area.

- Pull out the battery plug or clamp the battery while working on the electrical unit.
- First switch off the appliance, remove the key from the main switch and remove the battery plug or disconnect the battery before performing any cleaning or maintenance tasks on the appliance, replacing parts or switching over to another function.

Check charging status of batteries

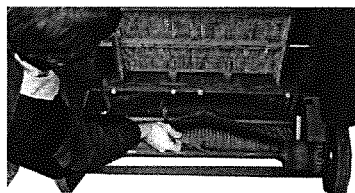
- Turn the main switch to position "1".



- 1 Green: Batteries are charged
- 2 Yellow: Operating time left: approximately 5 to 10 minutes
- 3 Red: Appliance switches off - batteries are charged

Checking roller brush

- Lock parking brake.
- Remove the waste container.

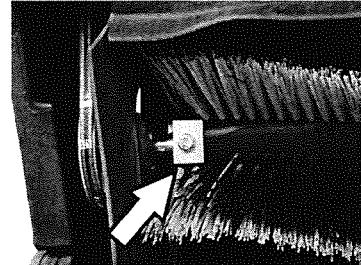


- Remove belts or cords from roller brush.

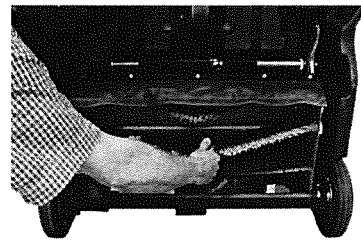
Replacing roller brush

Replacement is due if a visible deterioration in sweeping performance caused by bristle wear is evident.

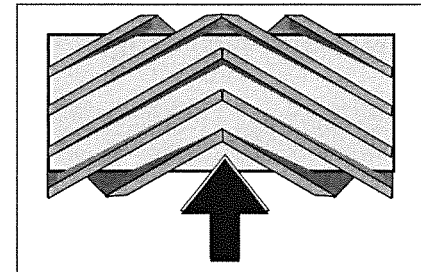
- Comfort model: Rotate push handle lock in an anti-clockwise direction. Lock has been unlocked.
- Remove the waste container.
- Push appliance to the back onto the push handle.



- Unscrew left and right locking screws.



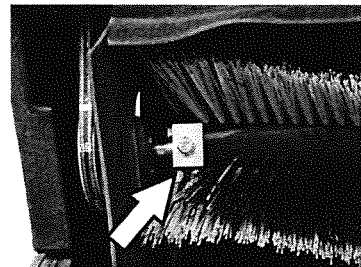
- Remove the sweeping roll downwards.



Installation position of roller brush in direction of travel

- Insert new sweep roller and fasten it.

Note: When installing the new roller brush, ensure correct positioning of the bristle assembly.

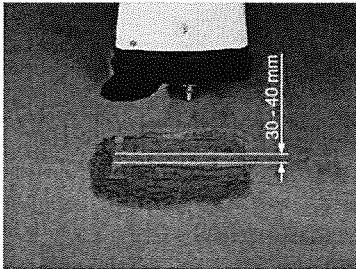


Make sure that the right angled clamping plates are in proper position. They should overlap the sweeping cylinder from above and below.

Note: Once the new roller brush has been installed, the sweeping track must readjusted.

Check and adjust roller brush sweeping track

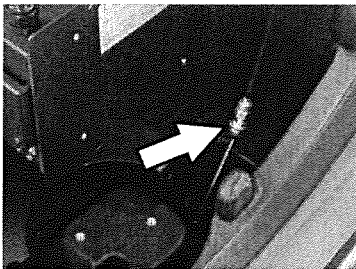
- Raise the sweeper from the front and drive it on to a smooth, even surface covered with a visible layer of dust or chalk.
- Lock parking brake.
- Let the sweeping roller rotate for approx. 15-30 seconds.
- Raise the sweeper at the front and drive it towards the side.



The sweeping track should have an even rectangular shape which is between 30 and 40 mm wide.

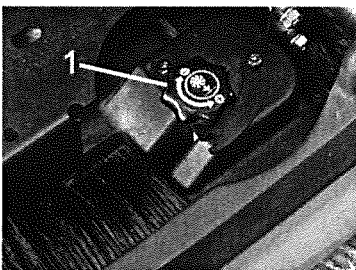
■ Adjust sweeping track width, Comfort model

Note: If the sweeping track is too small and the Bowden cable is tensioned when the roller brush is lowered, the Bowden cable must be adjusted.



- Adjust sweeping track on Bowden cable.
- Check sweeping mirror.

■ Adjust sweeping track width, Classic model

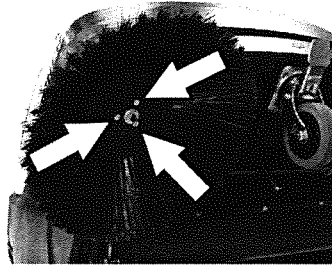


- 1 Rotary knob
- Turn the rotary knob:
 - In clock-wise direction: Sweeping track becomes smaller
 - Anti-clockwise direction: Sweeping track becomes bigger
- Check sweeping mirror.

Replacing side brush

Replacement is due if a visible deterioration in sweeping performance caused by bristle wear is evident.

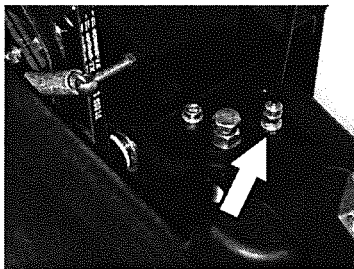
- Comfort model: Rotate push handle clock in an anti-clockwise direction. Lock has been unlocked.
- Remove the waste container.
- Push appliance to the back onto the push handle.



- Unscrew 3 screws from the underside of the side brush.
- Remove the wiper blade.
- Clip new side brushes on to driver and screw on.
- Tilt the appliance forward.

Adjust side-brush lowering

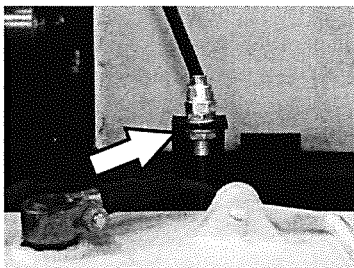
Adjustment is necessary if a visible deterioration in sweeping performance caused by side-brush is evident.



- Loosen counter-nut.
- Adjust the adjustment screw.
- Tighten the counter-nut.

Adjust the raising of the bulk waste flap

- Adjustment is necessary if the bulk waste flap cannot be raised wide enough.
- The Bowden cable needs to be released a little if the sweeper results become poorer, for e.g. due to the wearing of the front lip.



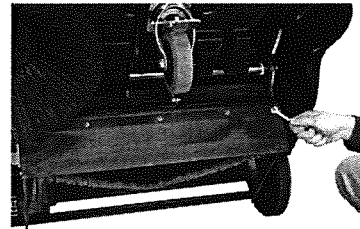
- Loosen counter-nut.
- Adjust the adjustment screw.
- Tighten the counter-nut.

Adjusting and replacing sealing strips

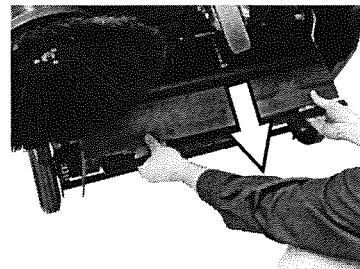
If the sweeping results degrade due to the wear of the sealing strips, the sealing strips must be readjusted or replaced.

- Comfort model: Rotate push handle clock in an anti-clockwise direction. Lock has been unlocked.
- Remove the waste container.
- Push appliance to the back onto the push handle.

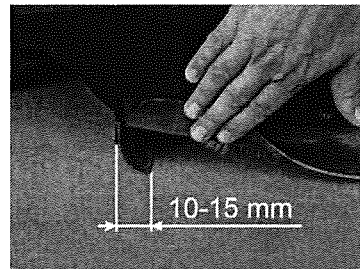
■ Front sealing strip



- Loosen the fastening screws of the sealing strip.



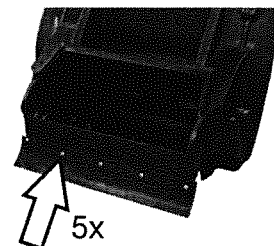
- Readjust the sealing strips pushing them downward into the slot.
- Tighten the fastening screws of the sealing strip.
- Prepare the appliance and move it a small distance forwards.



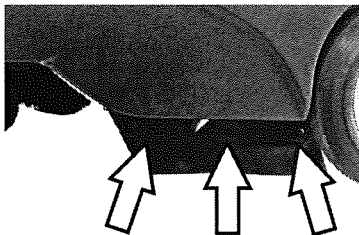
- Set the distance between the sealing strip and the floor so that the bottom edge trails behind at a distance of between 10 and 15 mm.

Note: If the setting range is not sufficient, the sealing strip is worn off and should be replaced.

■ Rear sealing strip



- Remove the waste container.
- Loosen the fastening screws of the sealing strip.
- Replace the sealing strip.
- Tighten the fastening of the sealing strip.
- Side sealing strips



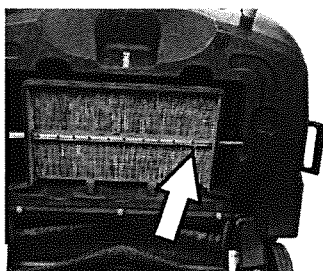
- Loosen the fastening screws of the sealing strip.
- Replace the sealing strip.
- Screw on new sealing strip without fully tightening it.
- To set the floor clearance, insert a sheet with a thickness of between 1 and 2 mm under the sealing strip.
- Adjust sealing strip.
- Tighten the fastening of the sealing strip.

Replacing dust filter

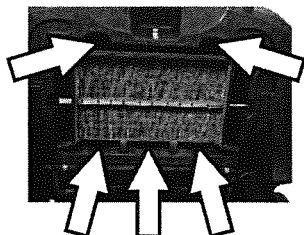
⚠ Warning

Empty waste container before replacing dust filter. Wear a dust mask when working around the dust filter. Observe safety regulations on the handling of fine particulate material.

- Lock parking brake.
- Remove the waste container.



- Remove the securing splint of the vibrator bar.
- Pull out the bar.



- Unscrew locking screws.

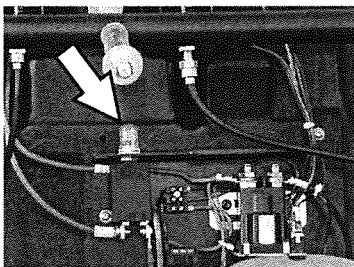


- Remove the tin frame.
- Replace the dust filter.

Note: Make sure when installing the new filter that the fins are not damaged.

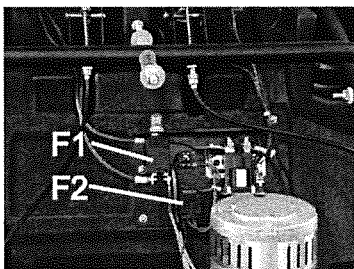
Replace the fuse/reset automatic cut-out

- Comfort model



Reset automatic cut-out F1:

- Press button.

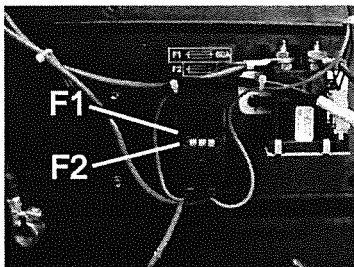


F1	Fuse load circuit, automatic cut-out (50 A)
F2	Fuse control circuit, safety fuse (3 A)

- Remove the cover using a screwdriver.
- Replace defective fuse.
- Replace cover.

Note: The automatic cut-out must be pressed.

- Classic model



F1	Fuse load circuit, safety fuse (60 A)
F2	Fuse control circuit, safety fuse (3 A)

- Remove the cover using a screwdriver.
- Replace defective fuse.
- Replace cover.

Accessories

Side brushes	6.905-626.0
With standard bristles for indoor and outdoor areas.	

Side-brushes, soft	6.906-132.0
For fine dust on inside surfaces; wetness resistant.	

Hard side-brushes	6.905-625.0
For removing stubborn dirt in the external area; resistant to moisture.	

Classic model	
Standard sweep roller	6.906-509.0
Resistant of wear and moisture. Universal bristles for inside and outside cleaning.	

Comfort model	
Roller brush, pro	6.906-508.0
For professional applications, especially safe against wear and tear.	

Dust filter	5.731-585.0
Replace the flat-fold filter at least once a year. Resistant to moisture, washable Filter effect > 99,9%, corresponds to category C of ZH 1/487 of BIA.	

Batteries (recommended)	
KM 85/50 W P Comfort	6.654-141.0
100 Ah, maintenance-free	
KM 85/50 W Comfort	6.654-093.0
75 Ah, maintenance-free	
Classic model	6.654-048.0
80 Ah, low maintenance	

Charger	
KM 85/50 W P Comfort	6.654-140.0
24 V	
KM 85/50 W Comfort	6.654-102.0
24 V	
KM 85/50 W P Classic	6.654-067.0
24 V	

Troubleshooting

Fault	Remedy
Appliance cannot be started	Charge the batteries
	Check fuses, if necessary, press automatic cut-out or replace fuse
	Inform Kärcher Customer Service.
Engine is running but machine is not moving	Check belt and chain
	Comfort model: Release push handle lock
	Inform Kärcher Customer Service.
Device comes to halt while climbing a slope	Drive over a path with lesser slope
	Inform Kärcher Customer Service.
Machine is not sweeping properly	Check roller brush and side brushes for wear, replace if necessary.
	Check belts for tension and functioning; replace, if required
	Adjust roller mirror
	Replacing roller brush
	Inform Kärcher Customer Service.
Dust gathers in the machine	Check dust filter, clean or replace
	Empty waste container
	Replace sealing profile at the waste container
	Check sealing strips for wear, adjust or replace as required
Poor cleaning performance at edges	Adjust side-brush lowering
	Replace side brush
	Inform Kärcher Customer Service.
Side-brush raising does not function	Check Bowden cable of the side-brush raising
	Inform Kärcher Customer Service.
KM 85/50 WP Comfort: Yellow indicator light on battery charger is blinking	See Operating instructions of charger
	Inform Kärcher Customer Service.

CE declaration

We hereby declare that the machine described below complies with the relevant basic safety and health requirements of the EU Directives, both in its basic design and construction as well as in the version put into circulation by us. This declaration shall cease to be valid if the machine is modified without our prior approval.

Product: Vacuum sweeper
Type: 1.351-xxx



Relevant EU Directives
2006/42/EC (+2009/127/EC)
2004/108/EC
2000/14/EC

Applied harmonized standards
EN 60335-1
EN 60335-2-29
EN 60335-2-72
EN 55014-1: 2006
EN 55014-2: 1997 + A1: 2001
EN 61000-3-2: 2006 + A2: 2009
EN 61000-3-3: 2008
EN 62233: 2008

Applied conformity evaluation method
Appendix V
Sound power level dB(A)
Measured: 82
Guaranteed: 83

5.957-709

The undersigned act on behalf and under the power of attorney of the company management.

 H. Jenner CEO	 S. Reiser Head of Approval
--	---

Alfred Kärcher GmbH Co. KG
Alfred-Kärcher-Str. 28 - 40
71364 Winnenden (Germany)
Phone: +49 7195 14-0
Fax: +49 7195 14-2212

Warranty

The warranty terms published by the relevant sales company are applicable in each country. We will repair potential failures of your appliance within the warranty period free of charge, provided that such failure is caused by faulty material or defects in manufacturing. In the event of a warranty claim please contact your dealer or the nearest authorized Customer Service centre. Please submit the proof of purchase.

Technical specifications

		KM 85/50 W Classic, 1.351-101	KM 85/50 W Comfort, 1.351-102	KM 85/50 W P Classic, 1.351-111	KM 85/50 W P Comfort, 1.351-112
Machine data					
Length x width x height	mm	1355 x 910 x 1155	1355 x 910 x 1155	1355 x 910 x 1155	1355 x 910 x 1155
Weight	kg	115	115	175	195
Driving and sweeping speed	km/h	4,5	4,5	4,5	4,5
Climbing capability (max.)	%	2	2 (15 with addi- tional brake 2.640-301.0)	2	2 (15 with addi- tional brake 2.640-301.0)
Roller brush diameter	mm	250	250	250	250
Side brush diameter	mm	410	410	410	410
Surface area, max.	m ² /h	3825	3825	3825	3825
Working width without side brushes	mm	610	610	610	610
Working width with side-brush	mm	850	850	850	850
Volume of waste container	l	50	50	50	50
Protection type, drip-proof	--	IPX 3	IPX 3	IPX 3	IPX 3
Engine					
Type	--	DC permanent solenoid motor	DC permanent solenoid motor	DC permanent solenoid motor	DC permanent solenoid motor
Voltage	V	24	24	24	24
Rated power	W	750	750	750	750
Speed	1/min	2600	2600	2600	2600
Batteries					
Type	--	--	--	2x 12 V, low maintenance	2x 12 V, mainte- nance-free
Capacity	Ah	--	--	80	100
Operating time after frequent charging	H	approx. 2.7	approx. 2.7	approx. 2.7	approx. 2.7
Filter and vacuum system					
Filter surface area, fine dust filter	m ²	2,3	2,3	2,3	2,3
Category of use – filter for non-hazardous dust	--	L	L	L	L
Nominal vacuum, suction system	mbar	4	4	4	4
Nominal volume flow, suction system	l/s	45	45	45	45
Working conditions					
Temperature	°C	-5 and +40	-5 and +40	-5 and +40	-5 and +40
Air humidity, non-condensing	%	0 - 90	0 - 90	0 - 90	0 - 90
Values determined as per EN 60335-2-72					
Noise emission					
Sound pressure level L _{pA}	dB(A)	66	66	66	66
Uncertainty K _{pA}	dB(A)	1	1	1	1
Sound power level L _{WA} + Uncertainty K _{WA}	dB(A)	83	83	83	83
Machine vibrations					
Hand-arm vibration value	m/s ²	<2,5	<2,5	<2,5	<2,5
Uncertainty K	m/s ²	0,2	0,2	0,2	0,2