



We help you shine.™

PE420GP

Grinder, Polisher & Burnisher.

PE420GP

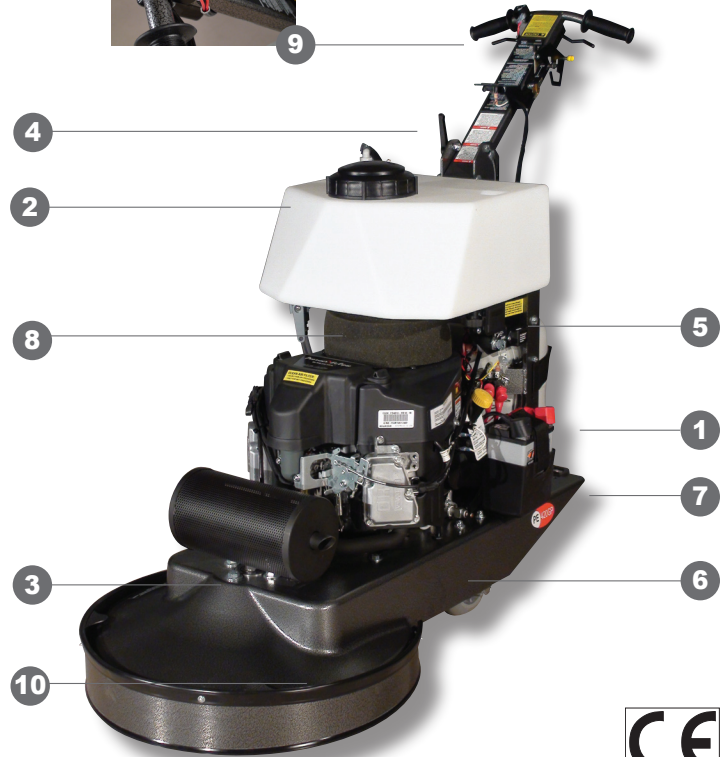
Grinder, Polisher and Burnisher.

Featuring an 18 HP 603 cc engine from: **Kawasaki Engines**

- 1 12-volt on-board battery starter.
- 2 7 gallon (26.5 liter) on board water supply.
- 3 Internal "above pad" water dosing system provides for even floor wetting and prevents wetting walls and merchandise.
- 4 Adjustable welded handle for improved comfort and control.
- 5 Eco-Sense™ emissions monitoring system.
- 6 American made all aluminum castings.
- 7 RokBak™ deck for easy disc installation.
- 8 Easy access filters for quick maintenance.
- 9 Ergonomic clutch and finger tip on/off water flow control..
- 10 Integral skirt protects surrounding merchandise.

FEATURING
EcoSense™
emissions monitoring
system

REDUCES
OPERATING
COSTS BY
34%



The affordable solution

Versatile applications.

For concrete, terrazzo and marble.



The PE420GP features a three position throttle - *idle, polish, burnish* - that accurately adjusts the pad speed for optimal polishing (1000 rpm) or high speed burnishing (1500 rpm).

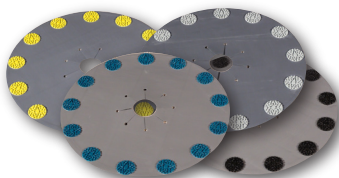
shine on.

CGA listed, CARB/EPA certified, CE approved

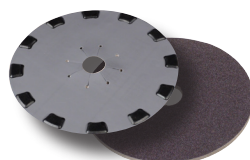


Dimensions and Performance Features

| Performance | Driver Size | Width | Vibration | Pad Pressure | Noise Level | Pad Speed | Weight |
|---|------------------|---------------------|------------------------|------------------|-------------|---|--------------------|
| Polishing: 11,000 ft ² /hr. (1022 m ² /hr.) Burnishing: 25,000 ft ² /hr. (2322 m ² /hr.) | 21 in (53 cm) | 22.75 in (58 cm) | < 2.5 m/s ² | 75 lb (34 kg) | 89 dB (A) | Polishing: 1,000 rpm Burnishing: 1,500 rpm | 240 lb (109 kg) |



Level-S™ pads are available in resin or semi-metal bonds and in grits from 30 - 3000. The proprietary Flex-Hub™ driver adjusts the pad to the floor surface for maximum effect.



Level-S™ 100 vacuum brazed metal trapezoid pads are designed for coating removal from concrete surfaces.



PowerStar® 1100 Densifying treatment and Stain Resistant Top Shield protects and hardens concrete floor surfaces.



PowerPolish™ & PowerPolish HT™ pads are ideal for curing PowerStar® Top Shield coating on concrete surfaces.

Pioneer Eclipse®

©2011 Amano Pioneer Eclipse Corporation • 1 Eclipse Road • PO Box 909 • Sparta, NC 28675 USA • 1-800-367-3550 • 1-336-372-8080 • Fax: 1-336-372-2895 • www.pioneer-eclipse.com