

Spare parts list
(5.970-739.0) Spare parts list Saber Compact 22

Table of contents

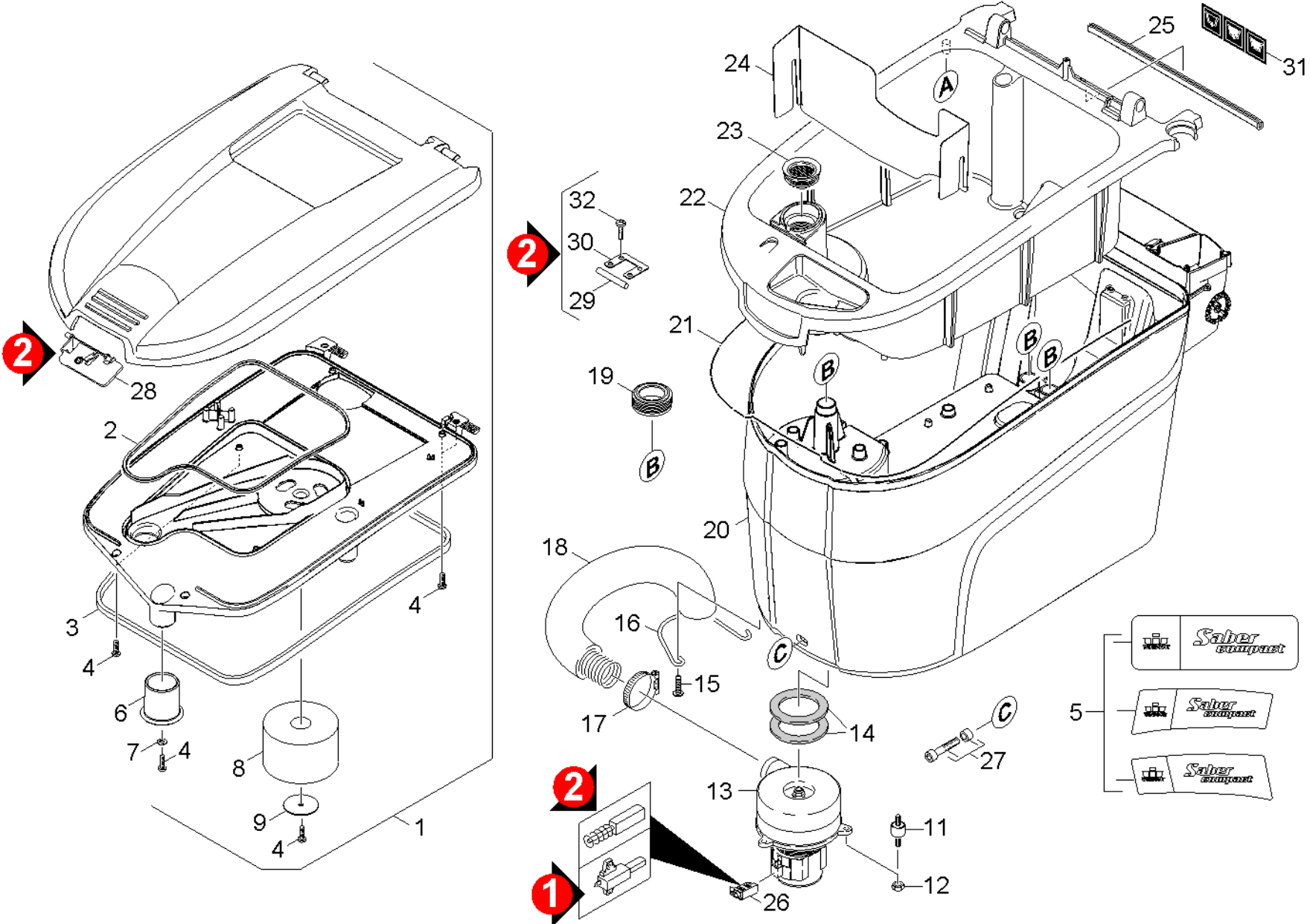
Spare parts list Saber Compact 22 (5.970-739.0)	3
10 Tank (0.131-467.0)	4
11 Tank (0.131-472.0)	5
12 Individual parts (0.131-473.0)	8
20 Frame (0.136-306.0)	10
21 Frame (0.136-307.0)	11
22 Frame (0.136-210.0)	14
30 Individual parts (0.136-211.0)	17
40 Electricics (0.136-304.0)	21
50 Brush-head Compact 22 SP (0.131-065.0)	24
51 Transmission (0.136-305.0)	25
52 Individual parts (0.141-022.0)	28
60 Brush-head Compact 22 (0.131-445.0)	32
61 Transmission (0.141-023.0)	33
62 Individual parts (0.141-024.0)	36
63 Individual parts (0.165-239.0)	40
70 Suction bar (0.141-030.0)	44
71 Suction bar (0.141-031.0)	45
72 Suction bar (0.164-835.0)	47
73 Suction beam retraction (0.141-034.0)	49
80 Roll pad (0.141-035.0)	52
90 Metering (0.141-300.0)	54
91 RM metering (0.141-040.0)	55
92 RM metering (0.141-301.0)	58

Spare parts list Saber Compact 22 (5.970-739.0)

Pos	Material #	Name
10	0.131-467.0	Tank
20	0.136-306.0	Frame
30	0.136-211.0	Individual parts
40	0.136-304.0	Electricics
50	0.131-065.0	Brush-head Compact 22 SP
60	0.131-445.0	Brush-head Compact 22
70	0.141-030.0	Suction bar
80	0.141-035.0	Roll pad
90	0.141-300.0	Metering

10 Tank (0.131-467.0)

Pos	Material #	Name	Qty.	Unit
11	0.131-472.0	Tank	1.000	ST
12	0.131-473.0	Individual parts	1.000	ST

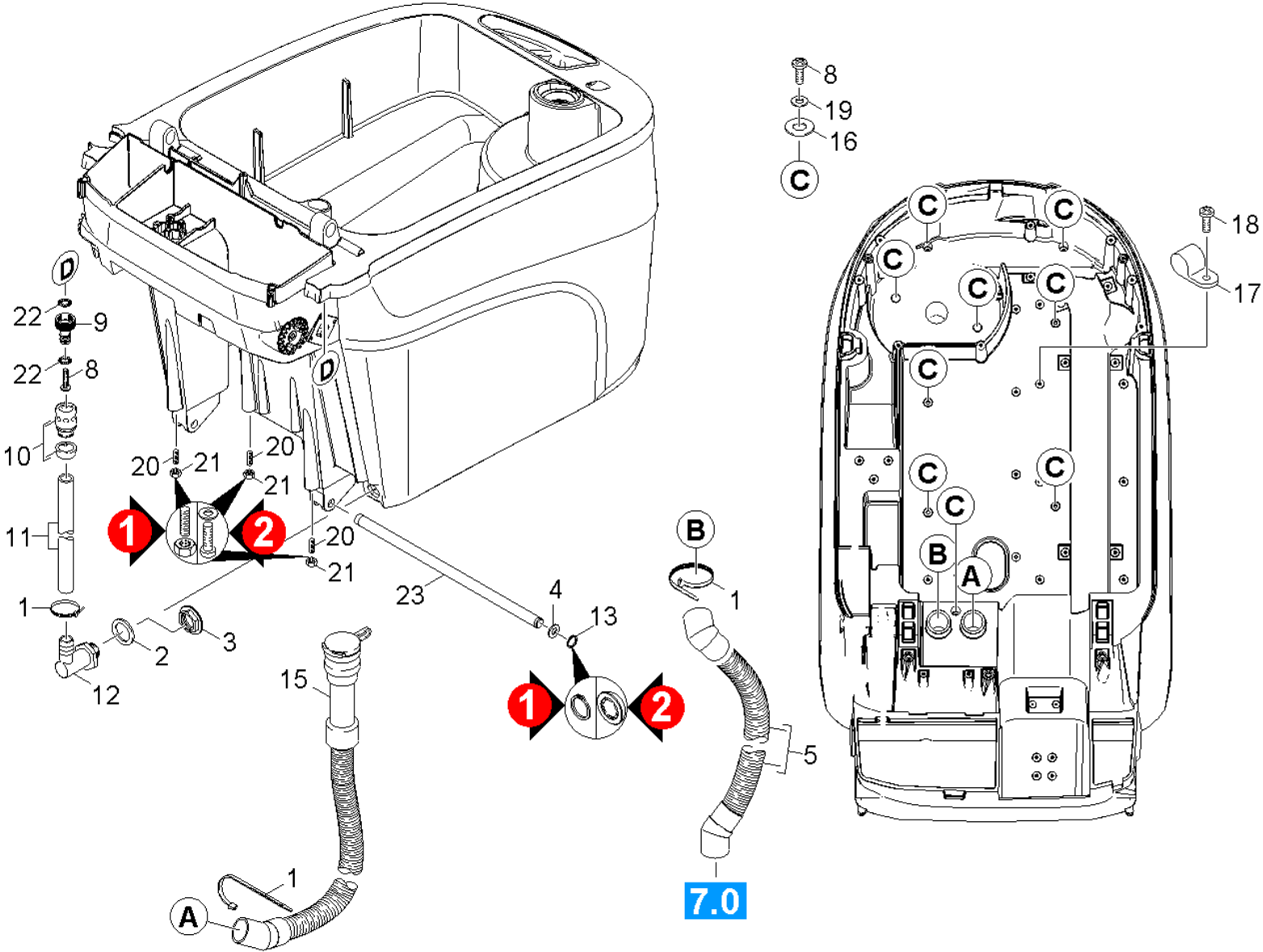


11 Tank (0.131-472.0)

ET/VT (spare/wear parts)	Pos	Material #	Name	Qty.	Unit	var. information	Footnote text
	1	3.071-037.0	Cover complete	1.000	ST		
X-X	2	6.273-196.0	Seal string cellular rubber	1.000	M		TO ORDER AS CUT GOODS
X-X	3	6.366-043.0	Sealing profile	1.000	M		TO ORDER AS CUT GOODS
X-X	4	7.303-113.0	Screw 6x25 -10.9-A2R (In6Rd)	12.000	ST		
	5	3.391-001.0	Set label replacement	1.000	ST		
X-X	6	5.363-686.0	Form seal BR BD	1.000	ST		
X-X	7	7.312-266.0	Washer 6-A2 ISO 7094	1.000	ST		
X-X	8	5.585-042.0	Float	1.000	ST		
X-X	9	5.115-754.0	Washer	1.000	ST		
X-X	11	6.339-021.0	Rubber buffer 2xM6-D20 H15	3.000	ST		
X	12	7.311-541.0	Hexagon nut M 6-8-A2E EN 1661	3.000	ST		
X-X	13	6.490-252.0	Vacuum motor 24V	1.000	ST		VERSION 2
	13	6.490-000.0	Vacuum motor 24V 420W	1.000	ST		VERSION 1
X-X	14	5.363-574.0	Joint ring	2.000	ST		
X-X	15	7.303-108.0	Screw 5x20 -10.9-R2R (In6Rd)	2.000	ST		
	16	5.017-853.0	Holder hose turbine	1.000	ST		
X-X	17	6.388-713.0	Hose clip	1.000	ST		
X-X	18	6.388-949.0	SUCTION TUBE	1.000	ST		
X-X	19	5.363-647.0	Joint ring FW-SW	3.000	ST		
	20	5.071-193.0	Fresh water tank blue	1.000	ST	VERSION 1	without locking part
	20	5.071-200.0	Tank fresh water BRBD 45-55/40 blau	1.000	ST	VERSION 2	with locking part
	21	6.273-104.0	Seal cellular rubber /sealing soft tube	1.000	M		TO ORDER AS CUT GOODS
	22	5.071-168.0	Waste water tank	1.000	ST	VERSION 1	without locking part
	22	5.071-201.0	Tank waste water	1.000	ST	VERSION 2	with locking part
X-X	23	5.515-266.0	Joint ring fluffing strainer	1.000	ST		

11 Tank (0.131-472.0)

ET/VT (spare/wear parts)	Pos	Material #	Name	Qty.	Unit	var. information	Footnote text
	24	5.057-897.0	Splash plate BR/BD 45-55/40	1.000	ST		ACCESSORIES
	25	6.273-058.0	Sealing tape cellularrubber 9x4	1.000	M		TO ORDER AS CUT GOODS
	26	6.490-260.0	Carbon brush set	1.000	ST		VERSION 2
Position text: 6.490-252.0							
X	26	6.490-230.0	Carbon brush set	1.000	ST		VERSION 1
Position text: 6.490-000.0							
	27	4.172-030.0	Screw complete only for replacement	1.000	ST		
	28	5.033-419.0	Locking part cover BRBD 45-55/40	1.000	ST	VERSION 2	
	29	7.314-153.0	Straight pin 5m6x35-A1 ISO 2338	1.000	ST	VERSION 2	
	30	5.033-421.0	Sheet metal component cover locking part	1.000	ST	VERSION 2	
	31	5.391-936.0	Label set complete BR/BD 45-55/40	1.000	ST		
X-X	32	7.303-107.0	Screw 5x16 -10.9-P2R (K-In6Rd)	4.000	ST		

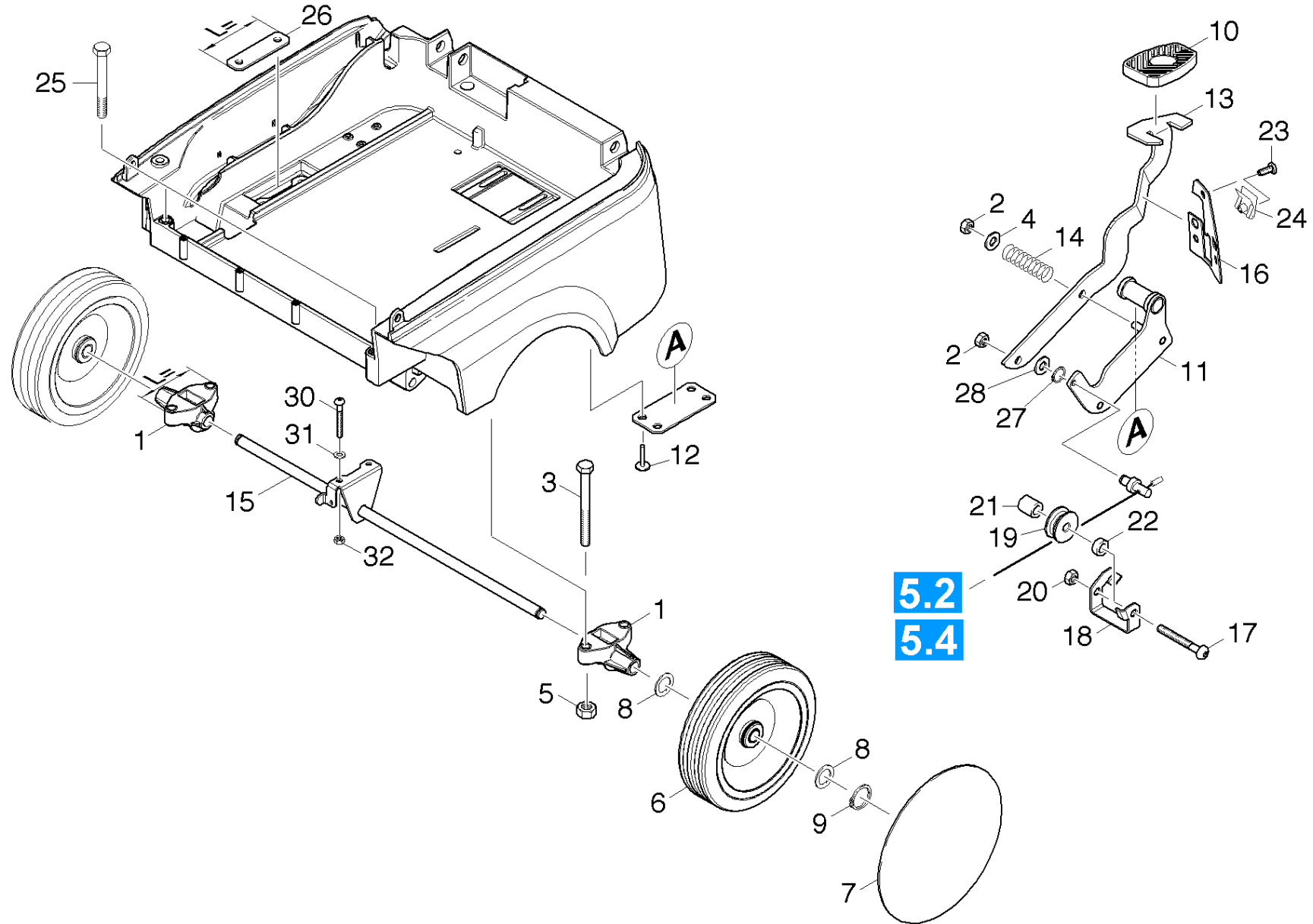


12 Individual parts (0.131-473.0)

ET/VT (spare/wear parts)	Pos	Material #	Name	Qty.	Unit	Footnote text
X-X	1	6.641-474.0	Cable tape 8-210	3.000	ST	
X-X	2	5.515-253.0	Seal D34	1.000	ST	
X	3	5.131-066.0	Sleeve discharge tank	1.000	ST	
	4	5.115-238.0	Washer	2.000	ST	VERSION 1
X-X	5	6.391-474.0	Suction hose	1.000	ST	
X	8	7.303-114.0	Screw 6 x 35-ST-10.9-A2R (IN6RD)	10.000	ST	
	9	6.391-468.0	Connection without seal 3/4"	1.000	ST	
	10	6.388-482.0	Hose coupling	1.000	ST	
X-X	11	6.391-473.0	Hose silicon	1.000	ST	
X-X	12	6.395-163.0	Angle bushing G1-2	1.000	ST	
	13	6.343-240.0	Lock washer	2.000	ST	VERSION 2
X-X	13	7.343-015.0	Locking ring 15x1-FST-RF DIN 471	2.000	ST	VERSION 1
X-X	15	6.391-472.0	Drain hose	1.000	ST	
X-X	16	5.363-648.0	Joint ring D14	9.000	ST	
	17	6.373-343.0	Pipe clamp D 6	4.000	ST	
X-X	18	7.303-107.0	Screw 5x16 -10.9-P2R (K-In6Rd)	4.000	ST	
	19	7.312-232.0	Serrated lock washer A6,4-FSt-A3E DIN 6	9.000	ST	
	20	7.306-133.0	Screw M6x50 -8.8-R3R (In6Rd)	3.000	ST	VERSION 2
X-X	20	7.307-418.0	Threaded pin M6x35 -St-45H-A2E ISO 4026	3.000	ST	VERSION 1
X-X	21	7.311-022.0	Hexagon nut M 6-A2-70 ISO 7040	3.000	ST	VERSION 1
X-X	21	7.312-260.0	Washer 6 -100HV-A3E ISO 7094	3.000	ST	VERSION 2
	22	7.312-167.0	Toothed lock washer A6,4-FSt-A3E DIN 67	2.000	ST	
	23	5.317-307.0	Bolt hinge tank	1.000	ST	

20 Frame (0.136-306.0)

Pos	Material #	Name	Qty.	Unit	var. information
21	0.136-307.0	Frame	1.000	ST	1.533-120.0/-121.0
22	0.136-210.0	Frame	1.000	ST	1.533-165.0/-166.0

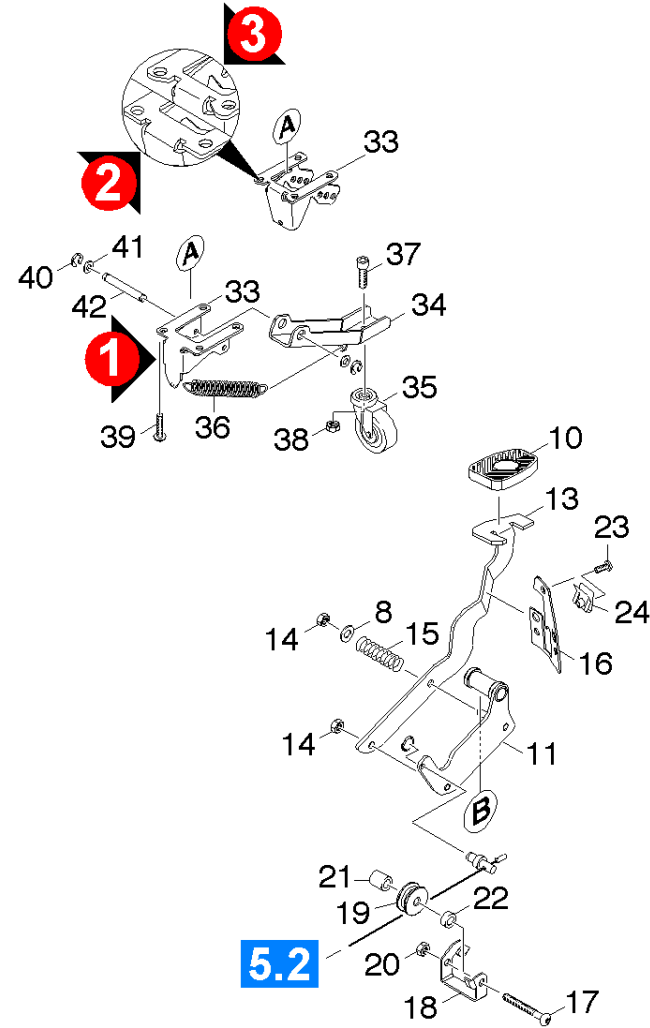
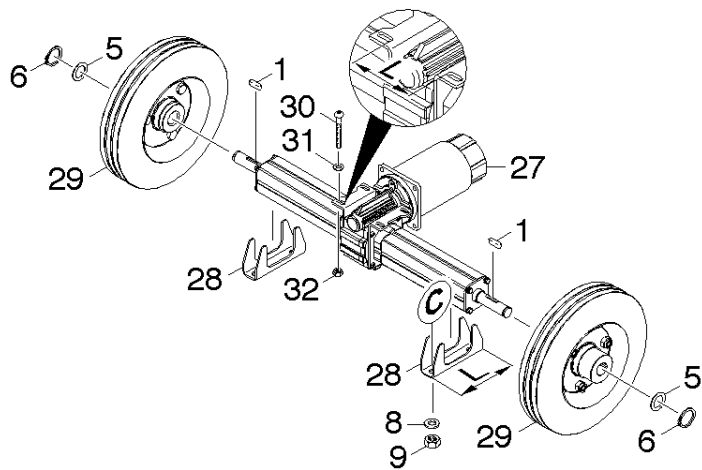
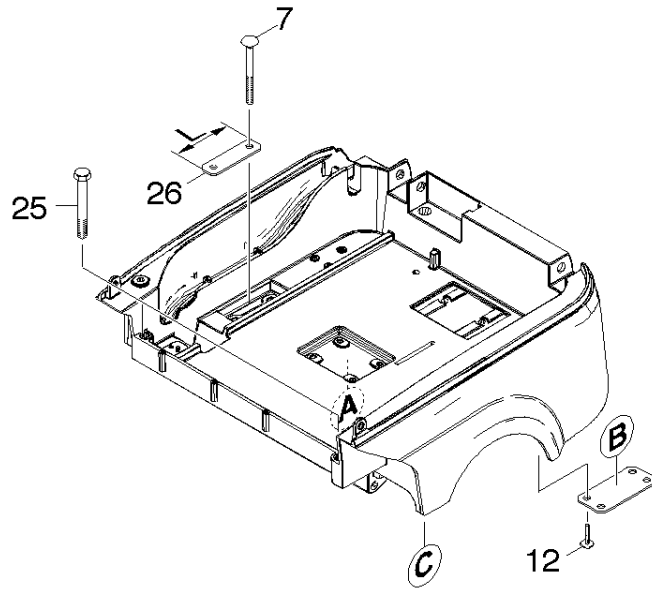


21 Frame (0.136-307.0)

ET/VT (spare/wear parts)	Pos	Material #	Name	Qty.	Unit	from ser.nr.	up to ser.nr.	var. information	Footnote text
	1	5.034-844.0	Holder axle rear	2.000	ST			L=117mm	VERSION 2
X-X	1	5.034-751.0	Holder axle	2.000	ST	0000000000	0000000000	L=86mm	VERSION 1
X-X	2	7.311-510.0	Hexagon nut M 8-8-A2E ISO 7040	2.000	ST				
	3	7.303-246.0	Saucer-head screw M8x100 -8.8-A2E DIN 6	4.000	ST	0000000000	0000000000		
X-X	4	7.312-289.0	Washer 8 -A2 ISO 7093-1	1.000	ST				
X-X	5	7.311-427.0	Hexagon nut M8 -04-A2E ISO 10511	4.000	ST	0000000000	0000000000		
X-X	6	6.435-356.0	Wheel D200	2.000	ST	0000000000	0000000000		
X-X	7	6.435-301.0	Wheel cab neutrally	2.000	ST	0000000000	0000000000		
X-X	8	5.115-608.0	Washer	4.000	ST	0000000000	0000000000		
X-X	9	7.343-015.0	Locking ring 15x1-FST-RF DIN 471	2.000	ST	0000000000	0000000000		
X-X	10	6.321-046.0	Coating pedal	1.000	ST	0000000000	0000000000		
X	11	4.481-236.0	Pedal feed roll	1.000	ST				
X	12	7.303-114.0	Screw 6 x 35-ST-10.9-A2R (IN6RD)	4.000	ST	0000000000	0000000000		
X-X	13	5.053-168.0	Plate pedal	1.000	ST				
X	14	5.332-358.0	Helical spring	1.000	ST				
	15	4.044-100.0	Axle complete rear	1.000	ST				VERSION 2
X	15	4.044-072.0	Axle carriage	1.000	ST				VERSION 1
	16	5.008-891.0	Plate notch pedal	1.000	ST	0000000000	0000000000		
X-X	17	7.306-201.0	Screw M 6x55-A2-70 (IN6RD)	1.000	ST	0000000000	0000000000		
	18	5.057-824.0	Sheet metal component bearing roller	1.000	ST	0000000000	0000000000		
	19	5.317-176.0	Deflection pulley	1.000	ST	0000000000	0000000000		
X-X	20	7.311-022.0	Hexagon nut M 6-A2-70 ISO 7040	1.000	ST	0000000000	0000000000		
	21	5.112-491.0	Bush	1.000	ST	0000000000	0000000000		
	22	5.112-448.0	Bush	1.000	ST	0000000000	0000000000		
X	23	7.306-181.0	Screw M 5x 12-A2-70 (In6Rd)	3.000	ST	0000000000	0000000000		

21 Frame (0.136-307.0)

ET/VT (spare/wear parts)	Pos	Material #	Name	Qty.	Unit	from ser.nr.	up to ser.nr.	var. information	Footnote text
	24	6.310-051.0	Putting nut M 5	1.000	ST	0000000000	0000000000		
X-X	25	7.304-033.0	Hexagonal head screw M 8X100-A4-70 ISO	2.000	ST	0000000000	0000000000		
	26	5.008-892.0	Plate bearing shaft	2.000	ST	0000000000	0000000000	L=93mm	VERSION 1
	26	5.009-833.0	Plate bearing differential	2.000	ST			L=86mm	VERSION 2
X-X	27	7.343-034.0	Locking ring 6x0,7 -St-ph DIN 471	1.000	ST				
X-X	28	7.312-026.0	Washer 6 -A2 ISO 7090	1.000	ST				
X-X	30	7.306-138.0	Screw M6x60 -8.8-R3R (In6Rd)	2.000	ST	0000000000	0000000000		
X-X	31	7.312-276.0	Washer 6 -200HV-A2E ISO7093-1	2.000	ST	0000000000	0000000000		
X	32	7.311-512.0	Hexagon nut M 6-8-A2E ISO 7040	2.000	ST	0000000000	0000000000		

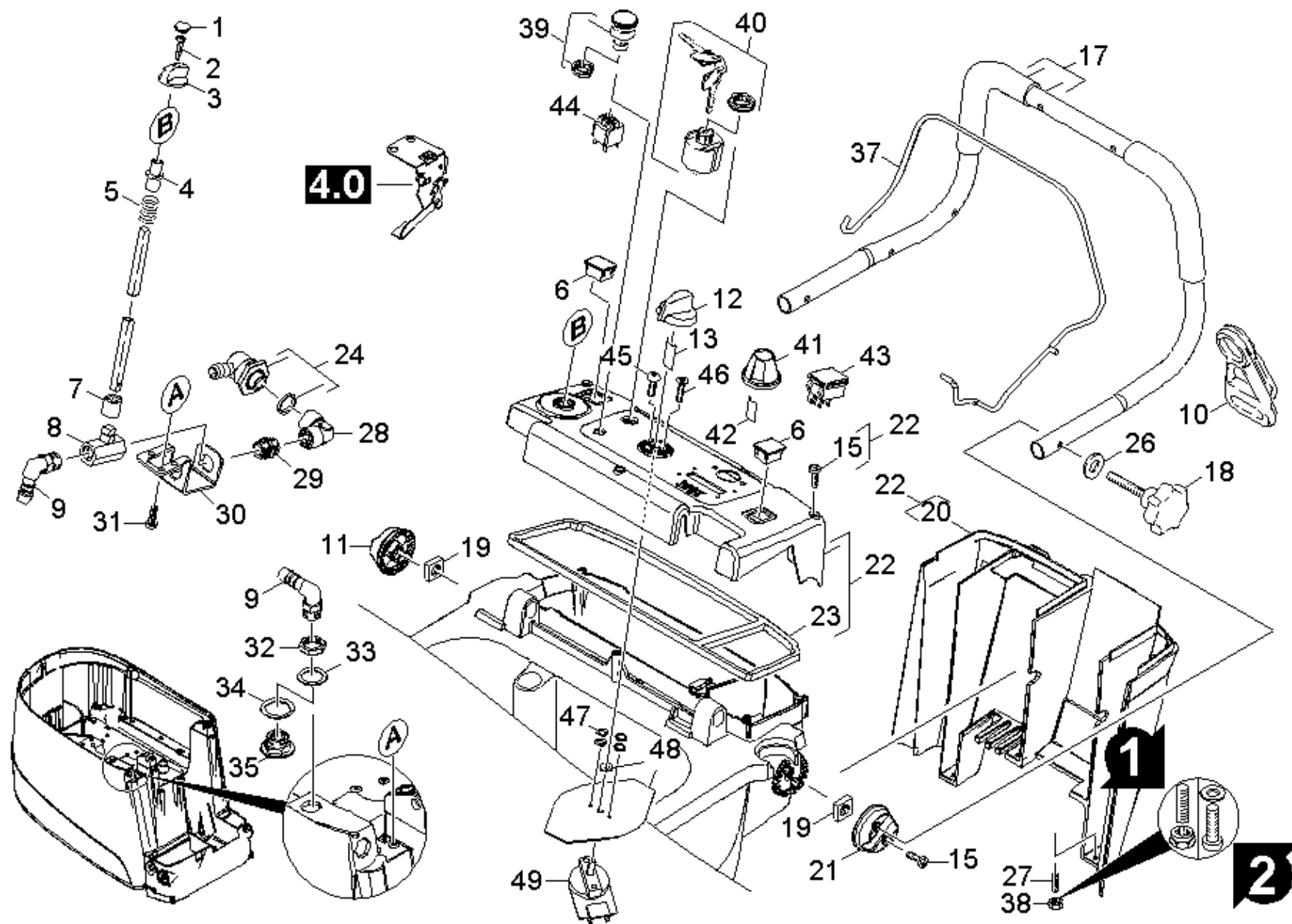


22 Frame (0.136-210.0)

ET/VT (spare/wear parts)	Pos	Material #	Name	Qty.	Unit	from ser.nr.	up to ser.nr.	var. information	Footnote text
X-X	1	7.318-079.0	Parallel key A 5x5x25-C45R DIN 6885	2.000	ST				
X	5	5.115-373.0	Washer	2.000	ST				
X-X	6	7.343-029.0	Locking ring 17x1-FST-RF DIN 471	2.000	ST				
	7	7.303-239.0	Saucer-head screw M8x140 -A2 DIN 603	4.000	ST				
X-X	8	7.312-289.0	Washer 8 -A2 ISO 7093-1	4.000	ST				
X-X	9	7.311-427.0	Hexagon nut M8 -04-A2E ISO 10511	4.000	ST	0000000000	0000000000		
X-X	10	6.321-046.0	Coating pedal	1.000	ST	0000000000	0000000000		
X	11	4.481-236.0	Pedal feed roll	1.000	ST				
X	12	7.303-114.0	Screw 6 x 35-ST-10.9-A2R (IN6RD)	4.000	ST	0000000000	0000000000		
X-X	13	5.053-168.0	Plate pedal	1.000	ST				
X-X	14	7.311-510.0	Hexagon nut M 8-8-A2E ISO 7040	2.000	ST				
X	15	5.332-358.0	Helical spring	1.000	ST				
	16	5.008-891.0	Plate notch pedal	1.000	ST	0000000000	0000000000		
X-X	17	7.306-201.0	Screw M 6x55-A2-70 (IN6RD)	1.000	ST				
	18	5.057-824.0	Sheet metal component bearing roller	1.000	ST	0000000000	0000000000		
	19	5.317-176.0	Deflection pulley	1.000	ST	0000000000	0000000000		
X-X	20	7.311-022.0	Hexagon nut M 6-A2-70 ISO 7040	1.000	ST	0000000000	0000000000		
	21	5.112-491.0	Bush	1.000	ST	0000000000	0000000000		
	22	5.112-448.0	Bush	1.000	ST	0000000000	0000000000		
X	23	7.306-181.0	Screw M 5x 12-A2-70 (In6Rd)	3.000	ST	0000000000	0000000000		
	24	6.310-051.0	Putting nut M 5	1.000	ST	0000000000	0000000000		
X-X	25	7.304-033.0	Hexagonal head screw M 8X100-A4-70 ISO	2.000	ST	0000000000	0000000000		
	26	5.008-892.0	Plate bearing shaft	2.000	ST	0000000000	0000000000	L = 93mm	VERSION 1
	26	5.009-833.0	Plate bearing differential	2.000	ST			L = 121mm	VERSION 2
	27	6.613-114.0	Traction motor	1.000	ST			L = 68,1mm	VERSION 1

22 Frame (0.136-210.0)

ET/VT (spare/wear parts)	Pos	Material #	Name	Qty.	Unit	from ser.nr.	up to ser.nr.	var. information	Footnote text
	27	6.613-149.0	Traction motor	1.000	ST			L = 65,4mm	VERSION 2
	28	5.009-831.0	Bracket differential	2.000	ST			L = 114mm	VERSION 2
	28	5.009-594.0	Bearing plate gear differential	2.000	ST			L = 88mm	VERSION 1
	29	6.435-776.0	Wheel transmission	2.000	ST				
X-X	30	7.306-138.0	Screw M6x60 -8.8-R3R (In6Rd)	4.000	ST	0000000000	0000000000		
X-X	31	7.312-276.0	Washer 6 -200HV-A2E ISO7093-1	4.000	ST	0000000000	0000000000		
X	32	7.311-512.0	Hexagon nut M 6-8-A2E ISO 7040	4.000	ST	0000000000	0000000000		
	33	5.009-013.0	Plate holder support wheel	1.000	ST	0000000000	0000000000		VERSION 1
	33	5.009-729.0	Plate holder support wheel	1.000	ST				VERSION 3
	33	5.009-781.0	Plate holder support wheel	1.000	ST				VERSION 2
	34	5.009-012.0	Plate support wheel	1.000	ST	0000000000	0000000000		
X	35	6.435-111.0	Castor D 75	1.000	ST	0000000000	0000000000		
	36	6.330-431.0	Extension spring	1.000	ST				VERSION 2
	36	6.330-403.0	Extension spring	1.000	ST	0000000000	0000000000		VERSION 1+2
X	37	7.306-243.0	Cylinder head screw M10x25 -A4-70 ISO 4	1.000	ST	0000000000	0000000000		
X-X	38	7.311-524.0	Hexagon nut M10-A2-70 ISO 7040	1.000	ST	0000000000	0000000000		
X-X	39	7.303-113.0	Screw 6x25 -10.9-A2R (In6Rd)	4.000	ST	0000000000	0000000000		
X-X	40	7.343-047.0	Lock washer 10-FST-A2E DIN 6799	2.000	ST	0000000000	0000000000		
X-X	41	7.312-054.0	Washer 12-A2 ISO 7090	2.000	ST	0000000000	0000000000		
X-X	42	5.317-084.0	Bolt	1.000	ST	0000000000	0000000000		



30 Individual parts (0.136-211.0)

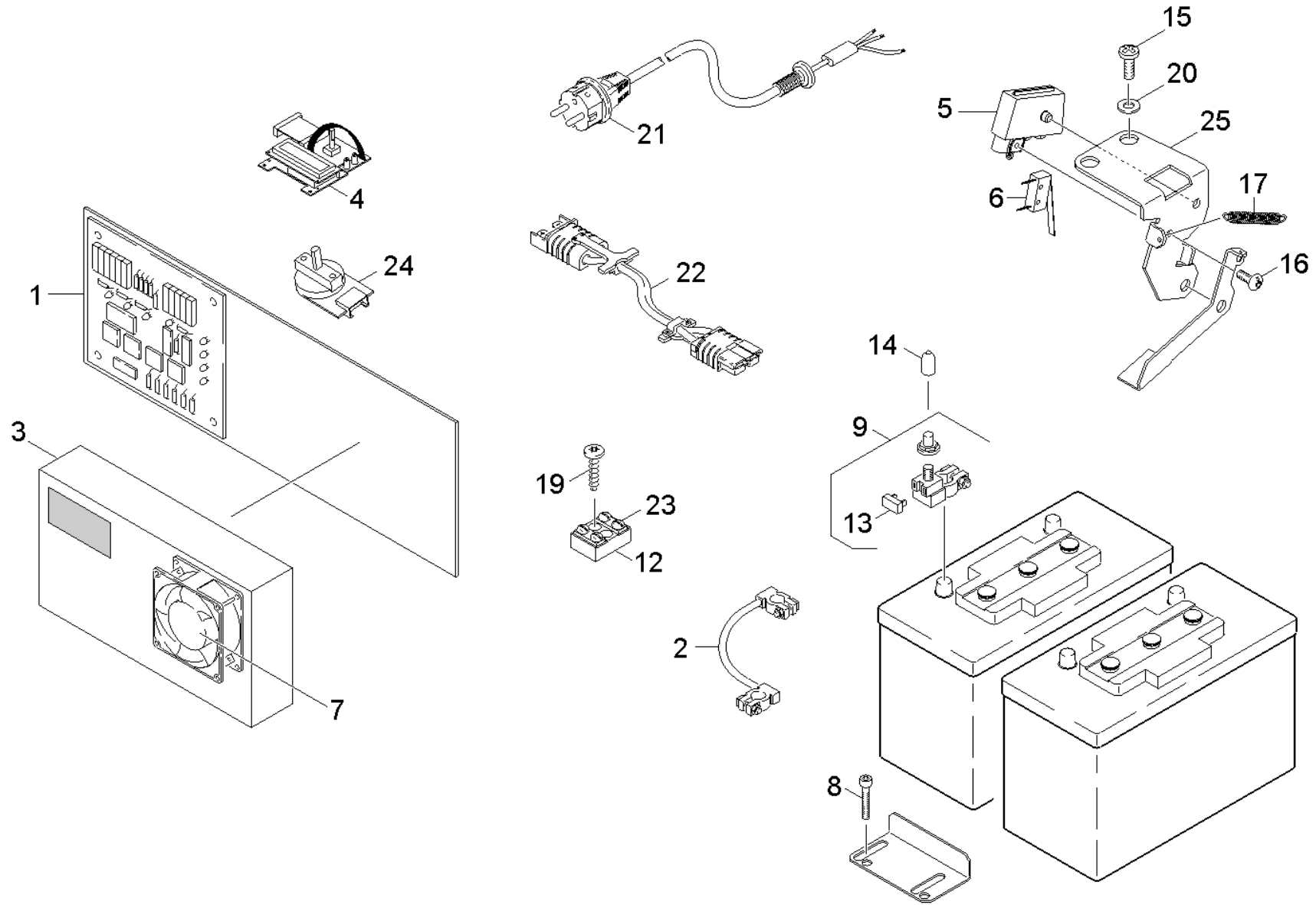
ET/VT (spare/wear parts)	Pos	Material #	Name	Qty.	Unit	from ser.nr.	up to ser.nr.	Footnote text
X	1	6.368-076.0	Ornamental hub cap D10/D12	1.000	ST	0000000000	0000000000	
	2	7.303-065.0	Sheet metal screw ST3,5X25-ST-A2R (IN6R	1.000	ST	0000000000	0000000000	
X-X	3	5.321-509.0	Handhold	1.000	ST	0000000000	0000000000	
X-X	4	5.470-034.0	Coupler	1.000	ST	0000000000	0000000000	
	5	5.332-290.0	Helical spring	1.000	ST	0000000000	0000000000	
	6	6.631-736.0	Blind plug	2.000	ST	0000000000	0000000000	
X-X	7	5.470-033.0	Coupler	1.000	ST	0000000000	0000000000	
X-X	8	6.412-289.0	Ball valve	1.000	ST	0000000000	0000000000	
X-X	9	6.390-002.0	Angle bushing	2.000	ST	0000000000	0000000000	
	10	6.641-776.0	Strain relief	1.000	ST	0000000000	0000000000	
X-X	11	5.032-754.0	Fixing retaining bracket right	1.000	ST	0000000000	0000000000	
X-X	12	5.321-738.0	Handhold operational concept	1.000	ST	0000000000	0000000000	
X-X	13	6.313-014.0	Spring element	1.000	ST	0000000000	0000000000	
X-X	15	7.303-108.0	Screw 5x20 -10.9-R2R (In6Rd)	8.000	ST	0000000000	0000000000	
	17	4.034-147.0	Retaining bracket handhold only for repl	1.000	ST			
X-X	18	6.321-179.0	Star grip	2.000	ST	0000000000	0000000000	
X-X	19	7.311-570.0	Square nut M8 -05-A2E DIN 557	2.000	ST	0000000000	0000000000	
	20	5.033-358.0	Covering cap electronics blue BAT/PACK D	1.000	ST			
Position text: 1.533-165.0 / -166.0								
	20	5.033-449.0	Covering cap electronics blue BAT/PACK	1.000	ST			
Position text: 1.533-120.0 / -121.0								
X-X	21	5.032-755.0	Fixing retaining bracket left	1.000	ST	0000000000	0000000000	
	22	3.071-102.0	Control panel replacement SC 22	1.000	ST	0000000000	0000000000	
Position text: 1.533-165.0 / -166.0								
	22	3.071-102.0	Control panel replacement SC 22	1.000	ST			
Position text: 1.533-120.0 / -121.0								

30 Individual parts (0.136-211.0)

ET/VT (spare/wear parts)	Pos	Material #	Name	Qty.	Unit	from ser.nr.	up to ser.nr.	Footnote text
X	23	5.362-010.0	Seal control panel BR/BD 45-55/40	1.000	ST	0000000000	0000000000	
X-X	24	6.395-187.0	Angle bushing G3-8	1.000	ST	0000000000	0000000000	
	26	7.312-277.0	Washer 8-200HV-A2E ISO7093-1	2.000	ST	0000000000	0000000000	
	27	7.306-133.0	Screw M6x50 -8.8-R3R (In6Rd)	3.000	ST			VERSION 2
X-X	27	7.307-418.0	Threaded pin M6x35 -St-45H-A2E ISO 4026	3.000	ST			VERSION 1
	28	6.395-186.0	Elbow connector G3/8"	1.000	ST	0000000000	0000000000	
	29	6.395-185.0	Double nipple G3/8"	1.000	ST	0000000000	0000000000	
	30	5.044-816.0	Holder ball valve	1.000	ST	0000000000	0000000000	
X-X	31	7.303-107.0	Screw 5x16 -10.9-P2R (K-In6Rd)	3.000	ST	0000000000	0000000000	
X-X	32	5.311-204.0	Hexagon nut M22x1,5	1.000	ST	0000000000	0000000000	
X	33	7.343-211.0	Shim ring 22x30x1-ST2K50 DIN 988	1.000	ST	0000000000	0000000000	
	34	5.515-293.0	Seal hexagon	1.000	ST	0000000000	0000000000	
	35	5.131-071.0	Sleeve fresh water	1.000	ST	0000000000	0000000000	
X-X	37	4.034-136.0	Retaining bracket Bp	1.000	ST	0000000000	0000000000	
X-X	38	7.312-260.0	Washer 6 -100HV-A3E ISO 7094	3.000	ST			VERSION 2
X-X	38	7.311-022.0	Hexagon nut M 6-A2-70 ISO 7040	3.000	ST			VERSION 1
X-X	39	6.600-344.0	Pushbutton emergency stop	1.000	ST	0000000000	0000000000	
X-X	40	6.630-106.0	Key switch	1.000	ST	0000000000	0000000000	
X-X	41	5.321-750.0	Handhold info panel	1.000	ST	0000000000	0000000000	
X-X	42	6.313-014.0	Spring element	1.000	ST	0000000000	0000000000	
X	43	6.632-398.0	Switch two-pole traction BR/BD45-55/40W	1.000	ST	0000000000	0000000000	
X-X	44	6.600-114.0	Switch	1.000	ST	0000000000	0000000000	
	45	7.306-208.0	Screw M 4x16-A2-70 (IN6RD)	1.000	ST			
X-X	46	7.305-019.0	Countersunk screw M4x16 -8.8-R2R (In6Rd)	1.000	ST			
	47	7.312-027.0	Washer 6-KUNSTSTOFF ISO7089	4.000	ST			

30 Individual parts (0.136-211.0)

ET/VT (spare/wear parts)	Pos	Material #	Name	Qty.	Unit	from ser.nr.	up to ser.nr.	Footnote text
	48	5.033-593.0	Covering cap for circuit board	1.000	ST			
X-X	49	6.630-387.0	Switch program selection	1.000	ST			



40 Electricics (0.136-304.0)

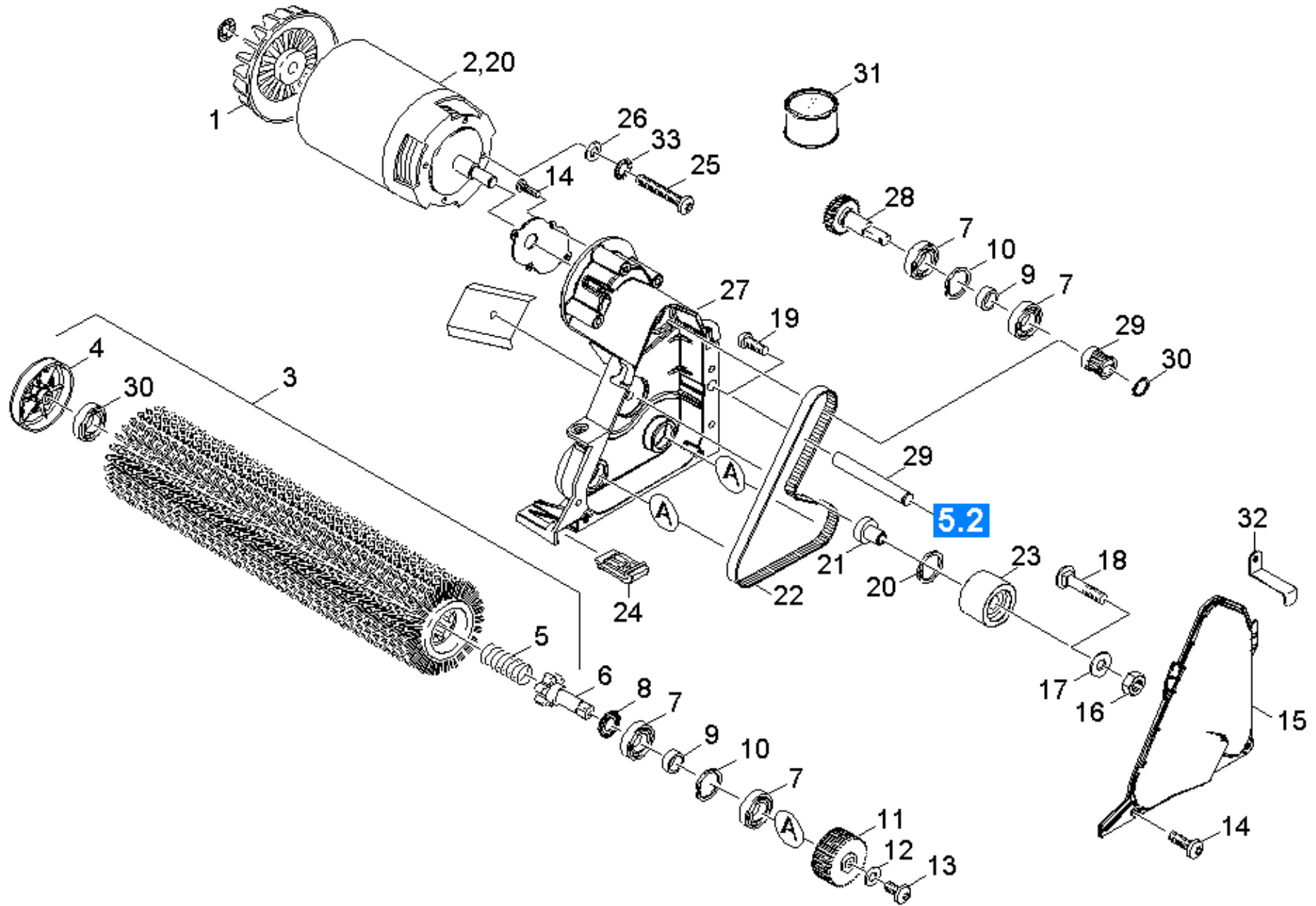
ET/VT (spare/wear parts)	Pos	Material #	Name	Qty.	Unit	from ser.nr.	up to ser.nr.	var. information	Footnote text
X-X	1	6.683-028.0	Electronics BR/BD 45-55/40 Bp Pack C DOS	1.000	ST				
Position text: 1.533-120.0 / -121.0									
	1	6.683-033.0	Electronics SC 22 Bp Pack C	1.000	ST				ONLY FOR BATTERIES "T
Position text: //1.533-120.0 / -121.0									
	1	6.683-032.0	Electronics SC 22 Bp Pack	1.000	ST				ONLY FOR BATTERIES "T
Position text: //1.533-165.0 / -166.0									
X-X	1	6.683-029.0	Electronics BR/BD 45-55/40 Bp Pack W DOS	1.000	ST				
Position text: 1.533-165.0 / -166.0									
X-X	2	6.647-738.0	Cable battery	1.000	ST	0000000000	0000000000		
X-X	2	6.649-879.0	Cable battery 25 mm²	1.000	ST				ONLY FOR BATTERIES "H
	3	6.654-238.0	Battery charger KFI 120V/60Hz 100Ah	1.000	ST			100Ah	
X-X	4	6.682-807.0	Circuit board Drehimp./Displ. BR/BD45-55	1.000	ST				
X	5	5.060-998.0	Housing micro switch	1.000	ST	0000000000	0000000000		
X-X	6	6.630-331.0	Micro switch	1.000	ST	0000000000	0000000000		
	7	6.484-310.0	Blower only for replacement	1.000	ST	0000000000	0000000000		
	8	7.306-040.0	Cylinder head screw M8x16 -8.8-A2E ISO4	2.000	ST	0000000000	0000000000		
X	9	6.643-956.0	Pole binder single 100A	1.000	ST	0000000000	0000000000		
X-X	12	6.643-840.0	Strip terminal	1.000	ST			(+7.306-067.0)	
X-X	13	6.644-363.0	Fuse replacement 100A	1.000	ST	0000000000	0000000000		
X	14	6.368-294.0	Protecting cap black 1/4" PVC	1.000	ST	0000000000	0000000000		
X-X	15	7.303-107.0	Screw 5x16 -10.9-P2R (K-In6Rd)	2.000	ST	0000000000	0000000000		
X-X	16	7.303-129.0	Screw 4x16 -10.9-R2R (K-In6Rd)	1.000	ST	0000000000	0000000000		
X-X	17	6.330-011.0	Extension spring	1.000	ST	0000000000	0000000000		
X-X	19	7.303-212.0	Screw 5x20 -A2-70 (In6Rd)	1.000	ST	0000000000	0000000000		
X-X	20	7.312-002.0	Washer 5-200HV-A3E ISO 7090	2.000	ST	0000000000	0000000000		

40 Electricics (0.136-304.0)

ET/VT (spare/wear parts)	Pos	Material #	Name	Qty.	Unit	from ser.nr.	up to ser.nr.	var. information	Footnote text
	21	6.649-505.0	Cable with plug *	1.000	ST	0000000000	0000000000		
X-X	22	6.649-303.0	Supply cable adapter BR/BD 45-55/40	1.000	ST				ACCESSORIES
X	23	7.306-067.0	Screw M 5x8-ST- 8.8-A2R (IN6RD)	4.000	ST				
X-X	24	6.630-387.0	Switch program selection	1.000	ST				
	25	5.057-837.0	Sheet metal component holder micro switc	1.000	ST				

50 Brush-head Compact 22 SP (0.131-065.0)

Pos	Material #	Name	Qty.	Unit
51	0.136-305.0	Transmission	1.000	ST
52	0.141-022.0	Individual parts	1.000	ST

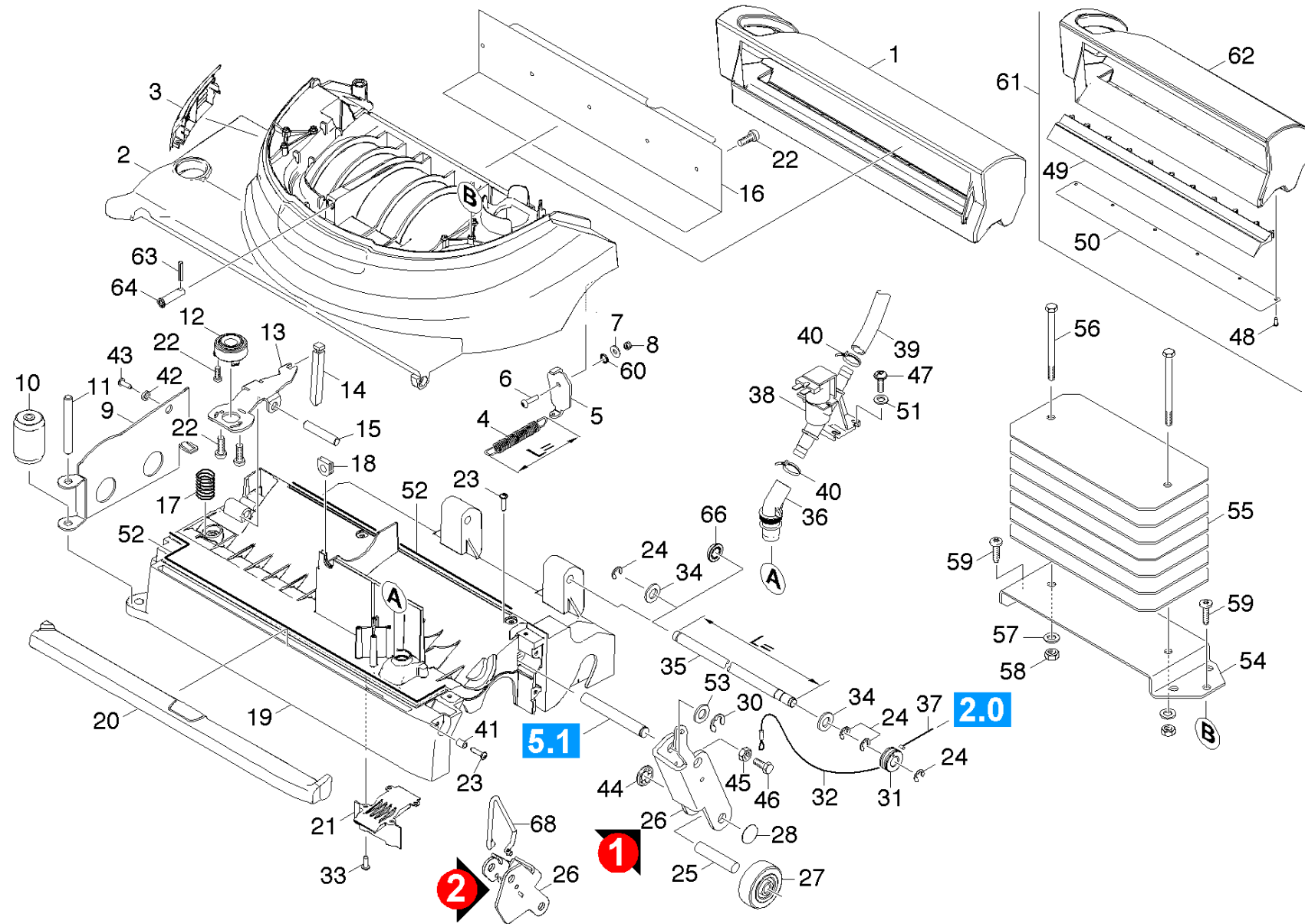


51 Transmission (0.136-305.0)

ET/VT (spare/wear parts)	Pos	Material #	Name	Qty.	Unit	from ser.nr.	up to ser.nr.	var. information
X-X	1	6.613-025.0	Blower wheel	1.000	ST	0000000000	0000000000	
	2	6.613-115.0	Direct current motor 24V	1.000	ST			
X-X	3	4.762-412.0	Roller brush complete black BR 55/40	2.000	ST	0000000000	0000000000	
X-X	3	4.762-411.0	Roller brush complete green BR 55/40	2.000	ST	0000000000	0000000000	
X-X	3	4.762-409.0	Roller brush complete white BR 55/40	2.000	ST	0000000000	0000000000	
X-X	3	4.762-410.0	Roller brush complete orange BR 55/40	2.000	ST	0000000000	0000000000	
X-X	4	4.038-677.0	Sheet metal component thread deflector	1.000	ST			
X-X	5	5.332-114.0	Helical spring	2.000	ST	0000000000	0000000000	
X-X	6	4.100-226.0	Driveshaft complete	2.000	ST	0000000000	0000000000	
X-X	7	7.401-115.0	Ball bearing 6002-2RS -WAEZLAGST DIN 62	6.000	ST	0000000000	0000000000	
X-X	8	6.363-469.0	Joint ring stainless steel Nilos 6002	2.000	ST	0000000000	0000000000	
X-X	9	5.110-686.0	Spacer sleeve	3.000	ST	0000000000	0000000000	
X-X	10	7.343-231.0	Locking ring 32x1,2 -St-ph DIN 472	3.000	ST	0000000000	0000000000	
X-X	11	5.625-357.0	Belt pulley 56Z HTD 3M	2.000	ST	0000000000	0000000000	
X-X	12	7.312-276.0	Washer 6 -200HV-A2E ISO7093-1	2.000	ST	0000000000	0000000000	
X-X	13	7.306-087.0	Screw M6x10 -8.8-R3R (In6Rd)	2.000	ST	0000000000	0000000000	
X-X	14	7.303-038.0	Screw M5x12 -St-P2R (In6Rd)	4.000	ST			
X-X	15	5.671-023.0	Cover gear	1.000	ST			
X-X	16	7.311-427.0	Hexagon nut M8 -04-A2E ISO 10511	1.000	ST	0000000000	0000000000	
X-X	17	7.312-017.0	Washer 8-A2 ISO 7089	1.000	ST	0000000000	0000000000	
X	18	7.303-186.0	Saucer-head screw M8x40 -St-A0P DIN 603	1.000	ST			
X-X	19	7.306-193.0	Screw M6x16 -A2-70 (In6Rd)	1.000	ST			
X-X	20	7.343-151.0	Locking ring 28x1,2-FST-RF DIN 472	1.000	ST			
Position text: ATAS								
X-X	21	5.110-700.0	Sleeve	1.000	ST	0000000000	0000000000	

51 Transmission (0.136-305.0)

ET/VT (spare/wear parts)	Pos	Material #	Name	Qty.	Unit	from ser.nr.	up to ser.nr.	var. information
X-X	22	6.348-466.0	Toothed belt HTD-597-3M-20 CXP III	1.000	ST	0000000000	0000000000	
	23	4.250-084.0	Tension roller D=33,5mm	1.000	ST			
X-X	24	5.056-010.0	Rocker BR-VS	1.000	ST	0000000000	0000000000	
X	25	7.306-034.0	Screw M6x55-A2-70 DIN 7984	4.000	ST	0000000000	0000000000	
X-X	26	7.312-026.0	Washer 6 -A2 ISO 7090	4.000	ST	0000000000	0000000000	
X-X	27	5.053-171.0	Carrier motor BR 45-55/40	1.000	ST			
X-X	28	4.100-124.0	Shaft gear right BR VS	1.000	ST	0000000000	0000000000	
	29	5.317-188.0	Bolt bearing feed roll BR	2.000	ST	0000000000	0000000000	
X-X	30	6.401-363.0	Ball bearing	1.000	ST			
	31	6.288-095.0	Viscous oil	1.000	ST			48g
	32	5.010-269.0	Sheet metal component binder cover BR 45	1.000	ST			
	33	7.312-232.0	Serrated lock washer A6,4-FSt-A3E DIN 6	4.000	ST			



52 Individual parts (0.141-022.0)

ET/VT (spare/wear parts)	Pos	Material #	Name	Qty.	Unit	from ser.nr.	up to ser.nr.	var. information	Footnote text
	1	5.032-912.0	Sweep tank counter rotation BR 55/40	1.000	ST				
	2	5.061-181.0	Housing top part BR 55/40	1.000	ST	0000000000	0000000000		
	3	5.032-902.0	Covering cap air circulation	1.000	ST	0000000000	0000000000		
	4	6.330-255.0	Extension spring	1.000	ST	0000000000	0000000000	L=71mm	
X	4	6.330-434.0	Extension spring feed roll	1.000	ST			L=131mm	
	5	5.057-848.0	Sheet metal component spring feed roll	1.000	ST	0000000000	0000000000		
X-X	6	7.306-183.0	Screw M5x20 -A2-70 (In6Rd)	1.000	ST	0000000000	0000000000		
X-X	7	7.312-282.0	Washer 5 -A2 ISO 7093-1	1.000	ST	0000000000	0000000000		
X-X	8	7.311-431.0	Hexagon nut M 5-1.4305 ISO 10511	1.000	ST	0000000000	0000000000		
X-X	9	5.038-998.0	Sheet metal component covering cap brush	1.000	ST	0000000000	0000000000		
X-X	10	6.435-341.0	Roller D45	1.000	ST	0000000000	0000000000		
X	11	5.317-186.0	Bolt deflector roll	1.000	ST	0000000000	0000000000		
X	12	5.326-030.0	Push button SWS-BR	1.000	ST	0000000000	0000000000		
	13	5.038-997.0	Sheet metal component rocker SWS	1.000	ST	0000000000	0000000000		
X	14	5.027-286.0	Rod locking part SWS	1.000	ST	0000000000	0000000000		
	15	5.317-185.0	Bolt bearing rocker SWS BR	1.000	ST	0000000000	0000000000		
	16	5.061-315.0	Sheet metal component covering cap BR55	1.000	ST	0000000000	0000000000		
	17	5.332-554.0	Pressure spring	1.000	ST	0000000000	0000000000		
	18	6.648-064.0	Cable bushing	1.000	ST	0000000000	0000000000		
X-X	19	5.061-182.0	Housing bottom part BR 55/40	1.000	ST	0000000000	0000000000		
X-X	20	5.190-246.0	Strip water distributor BR 55/40	1.000	ST	0000000000	0000000000		
	21	5.672-297.0	Covering cap water intake	1.000	ST	0000000000	0000000000		
	22	7.303-095.0	Screw 4x 12-ST-10.9-R2R (IN6RD)	10.000	ST				
X-X	23	7.303-113.0	Screw 6x25 -10.9-A2R (In6Rd)	4.000	ST				
X-X	24	7.343-303.0	Locking ring 8-A2 DIN 6799	4.000	ST	0000000000	0000000000		VERSION 1

52 Individual parts (0.141-022.0)

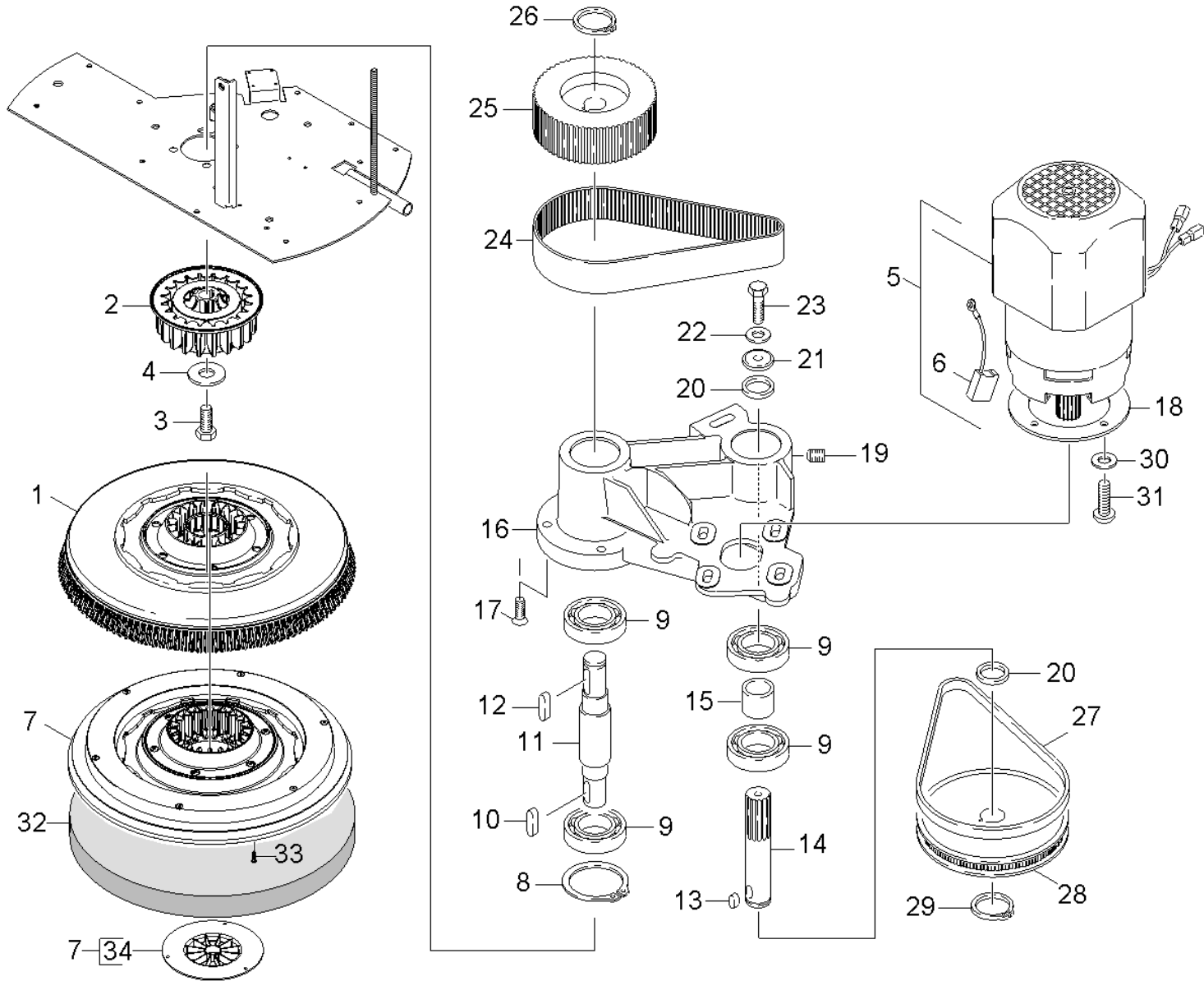
ET/VT (spare/wear parts)	Pos	Material #	Name	Qty.	Unit	from ser.nr.	up to ser.nr.	var. information	Footnote text
X-X	25	5.317-187.0	Bolt feed roll BR	1.000	ST	0000000000	0000000000		
	26	4.044-116.0	Carriage feed roll complete BR55	1.000	ST				VERSION 2
	26	5.057-854.0	Plate feed roll BR	1.000	ST	0000000000	0000000000		VERSION 1
X-X	27	6.435-745.0	Wheel VPA 80/12G	1.000	ST	0000000000	0000000000		
X-X	28	6.343-224.0	Quick-fastener	1.000	ST	0000000000	0000000000		
	29	6.431-251.0	Rope	1.000	ST	0000000000	0000000000		
X-X	30	7.343-047.0	Lock washer 10-FST-A2E DIN 6799	1.000	ST	0000000000	0000000000		
X	31	5.515-279.0	Deflection pulley wheel transport	1.000	ST	0000000000	0000000000		
X-X	32	6.431-252.0	Rope front BR	1.000	ST	0000000000	0000000000		
X-X	33	7.303-107.0	Screw 5x16 -10.9-P2R (K-In6Rd)	6.000	ST	0000000000	0000000000		
X-X	34	7.312-054.0	Washer 12-A2 ISO 7090	2.000	ST	0000000000	0000000000		
	35	5.317-189.0	Bolt bearing head	1.000	ST	0000000000	0000000000	L=433mm	VERSION 1
	35	5.317-294.0	Bolt bearing head	1.000	ST			L=403mm	VERSION 2
	36	5.379-028.0	Rubber bushing rubber	1.000	ST	0000000000	0000000000		
X-X	37	4.172-027.0	Rope rear BR	1.000	ST	0000000000	0000000000		
X-X	38	6.472-997.0	Solenoid valve 24V	1.000	ST				
X-X	39	6.388-248.0	Hose DN12,5	1.000	M	0000000000	0000000000		TO ORDER AS CUT GOOD
X-X	40	6.388-604.0	Tightening strap	2.000	ST	0000000000	0000000000		
	41	5.112-795.0	Bush	1.000	ST	0000000000	0000000000		
	42	5.112-794.0	Sleeve	1.000	ST	0000000000	0000000000		
X-X	43	7.303-104.0	Screw 5x16 -A2-70 (IN6RD)	1.000	ST	0000000000	0000000000		
X	44	6.343-180.0	Quick-fastener	1.000	ST	0000000000	0000000000		
X-X	45	7.311-067.0	Hexagon nut M 6-A2-70 ISO 4032	1.000	ST	0000000000	0000000000		VERSION 1
X-X	46	7.304-521.0	Hexagonal head screw M 6x16-A4-70 ISO 4	1.000	ST	0000000000	0000000000		VERSION 1
	47	7.303-026.0	Screw 4x16 -A2-70 (In6Rd)	2.000	ST				

52 Individual parts (0.141-022.0)

ET/VT (spare/wear parts)	Pos	Material #	Name	Qty.	Unit	from ser.nr.	up to ser.nr.	var. information	Footnote text
	48	7.303-117.0	Screw 4x20 -A2-70 (In6Rd)	6.000	ST				
X	49	5.190-252.0	Rubberlip BR 55	1.000	ST				
	50	5.056-055.0	Plate rubberlip BR55	1.000	ST				
X-X	51	7.312-293.0	Washer 4-A2 ISO 7093-1	2.000	ST				
	52	6.273-070.0	Seal string cellular rubber 4	1.000	M				TO ORDER AS CUT GOOD
	53	7.343-212.0	Shim ring 12x18x1 -St2K50 DIN988	1.000	ST				
	54	5.129-128.0	Bracket BR 55	1.000	ST				
X	55	5.129-127.0	Additional weight BR	7.000	ST				
X-X	56	7.304-407.0	Hexagonal head screw M 8x45-8.8-A2E ISO	2.000	ST				
X-X	57	7.312-004.0	Washer 8 -200HV-A3E ISO 7090	2.000	ST				
X	58	7.311-439.0	Hexagon nut M 8x1,0-6-A2E ISO 10512	2.000	ST				
X-X	59	7.303-112.0	Screw 6x20 -10.9-R2R (In6Rd)	4.000	ST				
	60	6.958-282.0	Double serrated lock washer D6,1	1.000	ST				
X-X	61	2.641-299.0	Add-on kit sweep tank BR 55	1.000	ST				
	62	5.032-899.0	Sweep tank synchronous run BR 55/40	1.000	ST				
X	63	7.314-039.0	Spring pin 5x40 -A ISO 8752	1.000	ST				
X-X	64	5.517-006.0	Sleeve tank closure	1.000	ST				
X-X	66	6.343-224.0	Quick-fastener	2.000	ST				VERSION 2
	68	5.034-872.0	Retaining bracket deflection	1.000	ST				VERSION 2

60 Brush-head Compact 22 (0.131-445.0)

Pos	Material #	Name	Qty.	Unit	var. information
61	0.141-023.0	Transmission	1.000	ST	
62	0.141-024.0	Individual parts	1.000	ST	VERSION 1
63	0.165-239.0	Individual parts	1.000	ST	VERSION 2

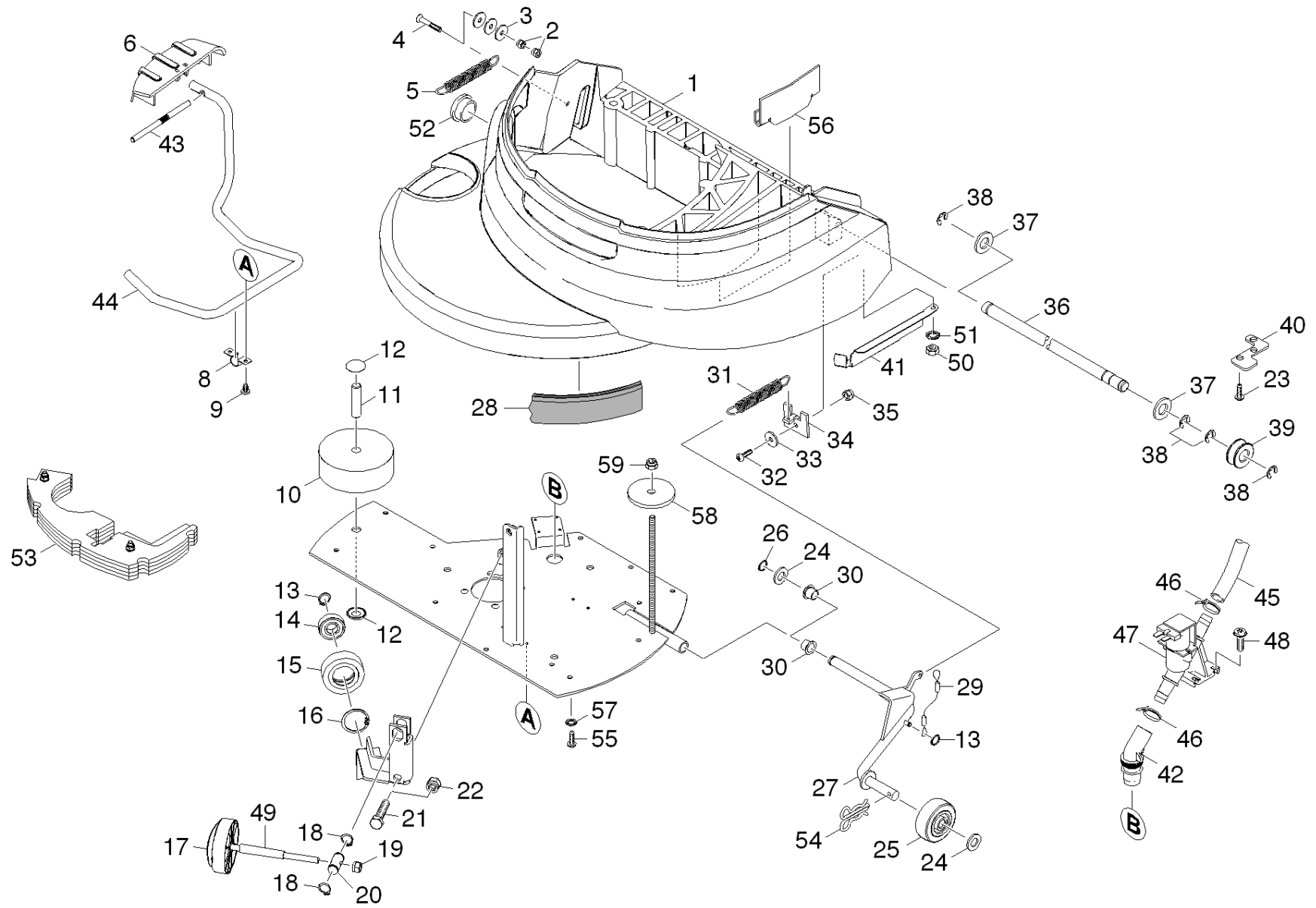


61 Transmission (0.141-023.0)

ET/VT (spare/wear parts)	Pos	Material #	Name	Qty.	Unit	from ser.nr.	up to ser.nr.
	1	4.905-007.0	Disc brushes complete nature BD 55/40	1.000	ST	0000000000	0000000000
	1	4.905-009.0	Disc brushes complete black BD 55/40	1.000	ST	0000000000	0000000000
X	1	4.905-008.0	Disc brushes complete white BD 55/40	1.000	ST	0000000000	0000000000
X-X	2	5.122-462.0	Retainer transmission die casting	1.000	ST		
X-X	3	7.304-538.0	Hexagonal head screw M8x16-A4-70 ISO 40	1.000	ST	0000000000	0000000000
X-X	4	7.312-268.0	Washer 8 -A2 ISO 7094	1.000	ST	0000000000	0000000000
X-X	5	6.613-071.0	Direct current motor	1.000	ST		
X-X	6	6.610-239.0	Carbon brush set ATAS	1.000	ST	0000000000	0000000000
Position text: ATAS							
X-X	7	4.762-416.0	Disk pad BD55	1.000	ST		
X-X	8	7.343-115.0	Locking ring 47x1,75 -St-ph DIN 472	1.000	ST	0000000000	0000000000
X-X	9	7.401-173.0	Ball bearing 6204-2RS-WAELZLAGST DIN 625	4.000	ST	0000000000	0000000000
X-X	10	7.318-030.0	Parallel key 6x6x25 -C45R DIN 6885-1	1.000	ST	0000000000	0000000000
X	11	5.100-378.0	Shaft belt drive 1 BD 530	1.000	ST	0000000000	0000000000
X-X	12	7.318-031.0	Parallel key 6x6x28 -C45R DIN 6885-1	1.000	ST	0000000000	0000000000
X-X	13	7.318-004.0	Parallel key 6x6x12 -C45R DIN 6885-1	1.000	ST	0000000000	0000000000
	14	5.100-379.0	Shaft belt drive 2	1.000	ST	0000000000	0000000000
	15	5.112-619.0	Bush for belt drive	1.000	ST	0000000000	0000000000
	16	5.044-897.0	Holder belt drive	1.000	ST	0000000000	0000000000
	17	7.303-226.0	Countersunk screw M8x20-St-A3E DIN7500(I	3.000	ST	0000000000	0000000000
	18	5.114-480.0	Ring motor	1.000	ST		
	19	7.307-301.0	Threaded pin M10X 12-A1-50 ISO 7435	1.000	ST	0000000000	0000000000
X	20	5.112-616.0	Bush	2.000	ST	0000000000	0000000000
	21	5.115-913.0	Flanged pulley	1.000	ST	0000000000	0000000000
X-X	22	7.312-003.0	Washer 6 -200HV-A3E ISO 7090	1.000	ST	0000000000	0000000000

61 Transmission (0.141-023.0)

ET/VT (spare/wear parts)	Pos	Material #	Name	Qty.	Unit	from ser.nr.	up to ser.nr.
X-X	23	7.306-191.0	Screw M6x10 -A2-70 (In6Rd)	1.000	ST	0000000000	0000000000
X-X	24	6.348-384.0	Toothed belt HTD-475-5M-40 CXPIII	1.000	ST	0000000000	0000000000
	25	5.625-402.0	Toothed lock washer 63Z	1.000	ST	0000000000	0000000000
X-X	26	7.343-018.0	Locking ring 18x1,2-Rf-St DIN 471	1.000	ST	0000000000	0000000000
X-X	27	6.348-383.0	Toothed belt HTD-447-3M-15 CXPIII	1.000	ST	0000000000	0000000000
	28	5.625-403.0	Toothed lock washer 125Z	1.000	ST	0000000000	0000000000
X-X	29	7.343-007.0	Locking ring 20x1,2-FST-RF DIN 471	1.000	ST	0000000000	0000000000
X-X	30	7.312-292.0	Washer 6 -A2 ISO 7093-1	4.000	ST	0000000000	0000000000
	31	7.306-090.0	Screw M6x16 -8.8-R3R (In6Rd)	4.000	ST	0000000000	0000000000
X	32	6.371-193.0	Diamond pad brown set 5x Ø460	1.000	ST		
X	32	6.371-194.0	Diamond pad violet set 5x Ø460	1.000	ST		
	33	7.303-096.0	Screw 4x22 -ST-10.9-R2R (IN6RD)	3.000	ST		
X-X	34	6.906-838.0	Centerlock	1.000	ST		



62 Individual parts (0.141-024.0)

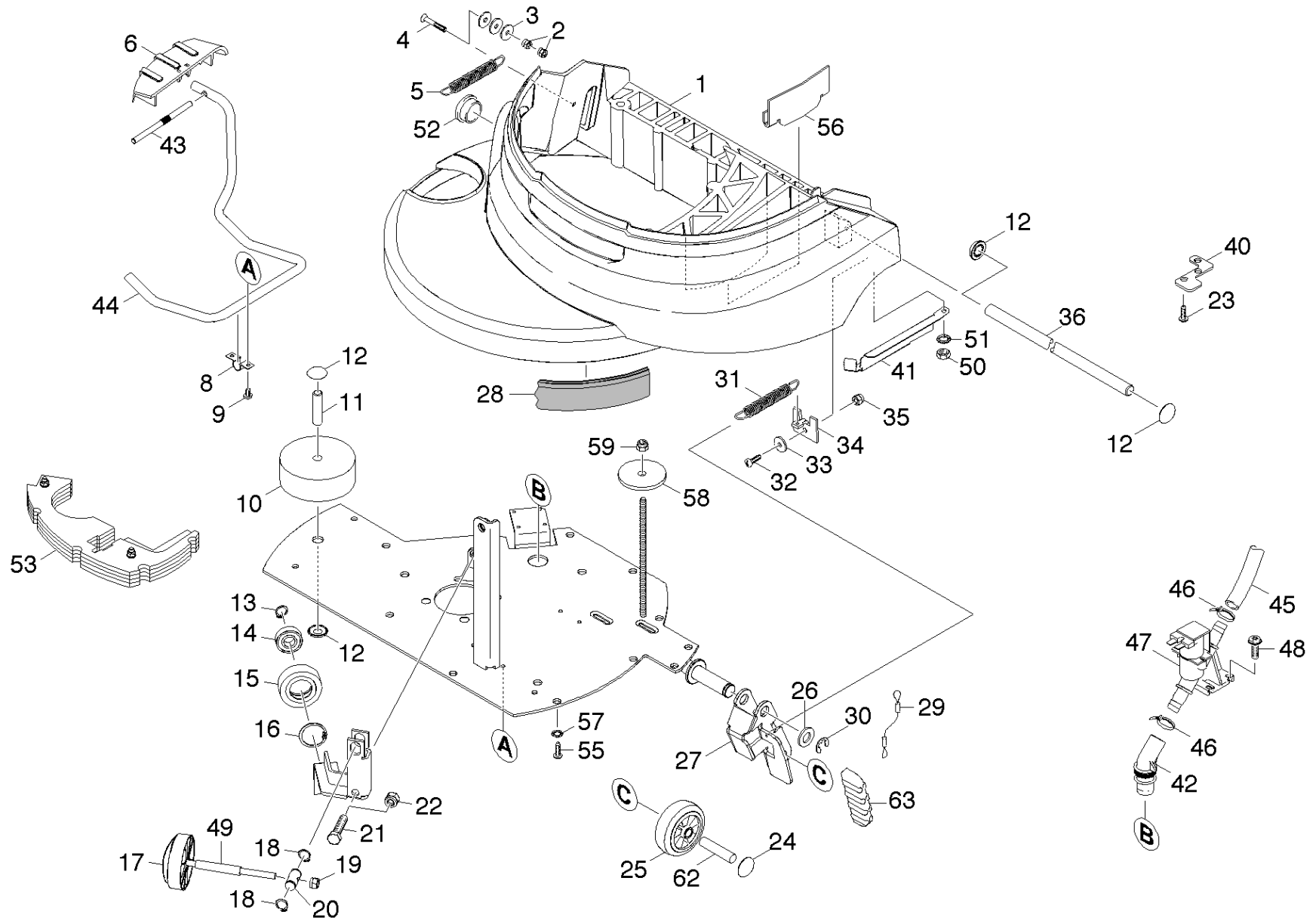
ET/VT (spare/wear parts)	Pos	Material #	Name	Qty.	Unit	from ser.nr.	up to ser.nr.	Footnote text
	1	5.032-883.0	Cover BD 55	1.000	ST			
X-X	2	7.311-022.0	Hexagon nut M 6-A2-70 ISO 7040	2.000	ST	0000000000	0000000000	
X-X	3	7.312-260.0	Washer 6 -100HV-A3E ISO 7094	3.000	ST			
	4	7.305-058.0	Countersunk screw M6x40-ST-8.8-A2R (IN6	1.000	ST	0000000000	0000000000	
X	5	6.330-093.0	Extension spring	1.000	ST	0000000000	0000000000	
X-X	6	5.481-370.0	Pedal lever notch	1.000	ST			
	8	6.373-689.0	Pipe clamp	2.000	ST	0000000000	0000000000	
X-X	9	7.303-036.0	Screw M5x8 -St-A2R (In6Rd)	4.000	ST	0000000000	0000000000	
X-X	10	5.515-096.0	Roller	1.000	ST	0000000000	0000000000	
X	11	5.317-175.0	Axle	1.000	ST	0000000000	0000000000	
X-X	12	6.343-224.0	Quick-fastener	2.000	ST			
X-X	13	7.343-015.0	Locking ring 15x1-FST-RF DIN 471	2.000	ST	0000000000	0000000000	
	14	7.401-128.0	Ball bearing 6202-2RS -Wälzl.St DIN 625	1.000	ST	0000000000	0000000000	
X-X	15	5.435-001.0	Roller	1.000	ST	0000000000	0000000000	
X-X	16	7.343-167.0	Locking ring 35x1,5-FST-BR DIN 472	1.000	ST	0000000000	0000000000	
	17	5.321-783.0	Handle three parts	1.000	ST	0000000000	0000000000	
X-X	18	7.343-036.0	Locking ring 14x1-FST-RF DIN 471	2.000	ST	0000000000	0000000000	
X-X	19	7.311-514.0	Hexagon nut M 8-A2-70 ISO 7040	1.000	ST	0000000000	0000000000	
	20	5.317-181.0	Bolt	1.000	ST	0000000000	0000000000	
X-X	21	7.304-806.0	Hexagonal head screw M10x45-A4-70 ISO 4	1.000	ST	0000000000	0000000000	
X-X	22	7.311-524.0	Hexagon nut M10-A2-70 ISO 7040	1.000	ST	0000000000	0000000000	
X-X	23	7.303-112.0	Screw 6x20 -10.9-R2R (In6Rd)	2.000	ST			
X-X	24	7.312-054.0	Washer 12-A2 ISO 7090	2.000	ST			
X-X	25	6.435-745.0	Wheel VPA 80/12G	1.000	ST	0000000000	0000000000	
	26	7.343-083.0	Locking ring 12x1 -FSt DIN 471	1.000	ST			

62 Individual parts (0.141-024.0)

ET/VT (spare/wear parts)	Pos	Material #	Name	Qty.	Unit	from ser.nr.	up to ser.nr.	Footnote text
X	27	4.044-071.0	Holder feed roll	1.000	ST	0000000000	0000000000	
X-X	28	5.365-222.0	Sealing lip	1.000	M	0000000000	0000000000	TO ORDER AS CUT GOODS
X-X	29	4.172-028.0	Rope BR/BD	1.000	ST	0000000000	0000000000	
X-X	30	6.347-084.0	Flanged bushing	2.000	ST	0000000000	0000000000	
	31	6.330-255.0	Extension spring	1.000	ST	0000000000	0000000000	
	32	7.306-077.0	Screw M5x16 -8.8-R2R (In6Rd)	1.000	ST	0000000000	0000000000	
X	33	7.312-267.0	Washer 5-A2 ISO 7094	1.000	ST	0000000000	0000000000	
	34	5.057-822.0	Sheet metal component	1.000	ST	0000000000	0000000000	
	35	7.311-065.0	Hexagon nut M 5-A2-70 ISO 4032	1.000	ST	0000000000	0000000000	
	36	5.317-180.0	Bolt bearing head	1.000	ST	0000000000	0000000000	
X-X	37	7.312-075.0	Washer 12-CuZn ISO 7092	2.000	ST	0000000000	0000000000	
X-X	38	7.343-303.0	Locking ring 8-A2 DIN 6799	4.000	ST	0000000000	0000000000	
X	39	5.317-191.0	Deflection pulley	1.000	ST	0000000000	0000000000	
	40	5.008-896.0	Plate fuse rope	1.000	ST	0000000000	0000000000	
	41	5.051-116.0	Plate stop BD	1.000	ST	0000000000	0000000000	
	42	5.379-028.0	Rubber bushing rubber	1.000	ST	0000000000	0000000000	
	43	5.105-621.0	Axle knurled	1.000	ST			
	44	5.034-755.0	Retaining bracket	1.000	ST	0000000000	0000000000	
X-X	45	6.388-248.0	Hose DN12,5	1.000	M	0000000000	0000000000	TO ORDER AS CUT GOODS
X-X	46	6.388-604.0	Tightening strap	2.000	ST	0000000000	0000000000	
X-X	47	6.472-997.0	Solenoid valve 24V	1.000	ST			
	48	7.303-032.0	Screw M4x12 -St-R2R (In6Rd)	4.000	ST	0000000000	0000000000	
	49	5.340-002.0	Sleeve	1.000	ST			
X-X	50	7.311-068.0	Hexagon nut M 8-A2-70 ISO 4032	1.000	ST			
	51	7.343-212.0	Shim ring 12x18x1 -St2K50 DIN988	1.000	ST			

62 Individual parts (0.141-024.0)

ET/VT (spare/wear parts)	Pos	Material #	Name	Qty.	Unit	from ser.nr.	up to ser.nr.	Footnote text
	52	6.632-427.0	Cap	1.000	ST			
	53	4.031-085.0	Additional weight belt drive BD 45-55/40	1.000	ST			ACCESSORIES
X-X	54	6.313-022.0	Spring clip	1.000	ST			
X-X	55	7.303-113.0	Screw 6x25 -10.9-A2R (In6Rd)	10.000	ST			
	56	5.009-612.0	Sheet metal component support BD 45/40	1.000	ST			
	57	7.312-167.0	Toothed lock washer A6,4-FSt-A3E DIN 67	10.000	ST			
	58	5.115-690.0	Cover washer	1.000	ST			
X-X	59	7.311-510.0	Hexagon nut M 8-8-A2E ISO 7040	1.000	ST			



63 Individual parts (0.165-239.0)

ET/VT (spare/wear parts)	Pos	Material #	Name	Qty.	Unit	from ser.nr.	up to ser.nr.	var. information	Footnote text
	1	5.032-883.0	Cover BD 55	1.000	ST				
X-X	2	7.311-022.0	Hexagon nut M 6-A2-70 ISO 7040	2.000	ST	0000000000	0000000000		
X-X	3	7.312-260.0	Washer 6 -100HV-A3E ISO 7094	3.000	ST				
	4	7.305-058.0	Countersunk screw M6x40-ST-8.8-A2R (In6	1.000	ST	0000000000	0000000000		
X	5	6.330-093.0	Extension spring	1.000	ST	0000000000	0000000000		
X-X	6	5.481-370.0	Pedal lever notch	1.000	ST			(+5.105-621.0)	
	8	6.373-689.0	Pipe clamp	2.000	ST	0000000000	0000000000		
X-X	9	7.303-036.0	Screw M5x8 -St-A2R (In6Rd)	4.000	ST	0000000000	0000000000		
X-X	10	5.515-096.0	Roller	1.000	ST	0000000000	0000000000		
X	11	5.317-175.0	Axle	1.000	ST	0000000000	0000000000		
X-X	12	6.343-224.0	Quick-fastener	4.000	ST				
X-X	13	7.343-015.0	Locking ring 15x1-FST-RF DIN 471	1.000	ST	0000000000	0000000000		
	14	7.401-128.0	Ball bearing 6202-2RS -Wälzl.St DIN 625	1.000	ST	0000000000	0000000000		
X-X	15	5.435-001.0	Roller	1.000	ST	0000000000	0000000000		
X-X	16	7.343-167.0	Locking ring 35x1,5-FST-BR DIN 472	1.000	ST	0000000000	0000000000		
	17	5.321-783.0	Handle three parts	1.000	ST	0000000000	0000000000		
X-X	18	7.343-036.0	Locking ring 14x1-FST-RF DIN 471	2.000	ST	0000000000	0000000000		
X-X	19	7.311-514.0	Hexagon nut M 8-A2-70 ISO 7040	1.000	ST	0000000000	0000000000		
	20	5.317-181.0	Bolt	1.000	ST	0000000000	0000000000		
X-X	21	7.304-806.0	Hexagonal head screw M10x45-A4-70 ISO 4	1.000	ST	0000000000	0000000000		
X-X	22	7.311-524.0	Hexagon nut M10-A2-70 ISO 7040	1.000	ST	0000000000	0000000000		
X-X	23	7.303-112.0	Screw 6x20 -10.9-R2R (In6Rd)	2.000	ST				
X	24	6.343-180.0	Quick-fastener	2.000	ST				
X-X	25	6.435-745.0	Wheel VPA 80/12G	1.000	ST	0000000000	0000000000		
X-X	26	7.343-012.0	Locking ring 25x2-FST-PHR DIN 471	2.000	ST				

63 Individual parts (0.165-239.0)

ET/VT (spare/wear parts)	Pos	Material #	Name	Qty.	Unit	from ser.nr.	up to ser.nr.	var. information	Footnote text
	27	4.044-114.0	Carriage feed roll complete BD	1.000	ST	0000000000	0000000000		
X-X	28	5.365-222.0	Sealing lip	1.000	M	0000000000	0000000000		TO ORDER AS CUT GOO
X-X	29	4.172-028.0	Rope BR/BD	1.000	ST	0000000000	0000000000		
	30	7.343-306.0	Lock washer 12-St-A2E DIN 6799	2.000	ST				
	31	6.330-255.0	Extension spring	1.000	ST	0000000000	0000000000		
	32	7.306-077.0	Screw M5x16 -8.8-R2R (In6Rd)	1.000	ST	0000000000	0000000000		
X	33	7.312-267.0	Washer 5-A2 ISO 7094	1.000	ST	0000000000	0000000000		
	34	5.057-822.0	Sheet metal component	1.000	ST	0000000000	0000000000		
	35	7.311-065.0	Hexagon nut M 5-A2-70 ISO 4032	1.000	ST	0000000000	0000000000		
	36	5.317-294.0	Bolt bearing head	1.000	ST				
	40	5.008-896.0	Plate fuse rope	1.000	ST	0000000000	0000000000		
	41	5.051-116.0	Plate stop BD	1.000	ST	0000000000	0000000000		
	42	5.379-028.0	Rubber bushing rubber	1.000	ST	0000000000	0000000000		
	43	5.105-621.0	Axle knurled	1.000	ST				
	44	5.034-755.0	Retaining bracket	1.000	ST	0000000000	0000000000		
X-X	45	6.388-248.0	Hose DN12,5	1.000	M	0000000000	0000000000		TO ORDER AS CUT GOO
X-X	46	6.388-604.0	Tightening strap	2.000	ST	0000000000	0000000000		
X-X	47	6.472-997.0	Solenoid valve 24V	1.000	ST				
	48	7.303-032.0	Screw M4x12 -St-R2R (In6Rd)	4.000	ST	0000000000	0000000000		
	49	5.340-002.0	Sleeve	1.000	ST				
X-X	50	7.311-068.0	Hexagon nut M 8-A2-70 ISO 4032	1.000	ST				
	51	7.343-212.0	Shim ring 12x18x1 -St2K50 DIN988	1.000	ST				
	52	6.632-427.0	Cap	1.000	ST				
Position text: //1.533-114/ -164/ -109/ -159.0									
	53	4.031-085.0	Additional weight belt drive BD 45-55/40	1.000	ST				ACCESSORIES

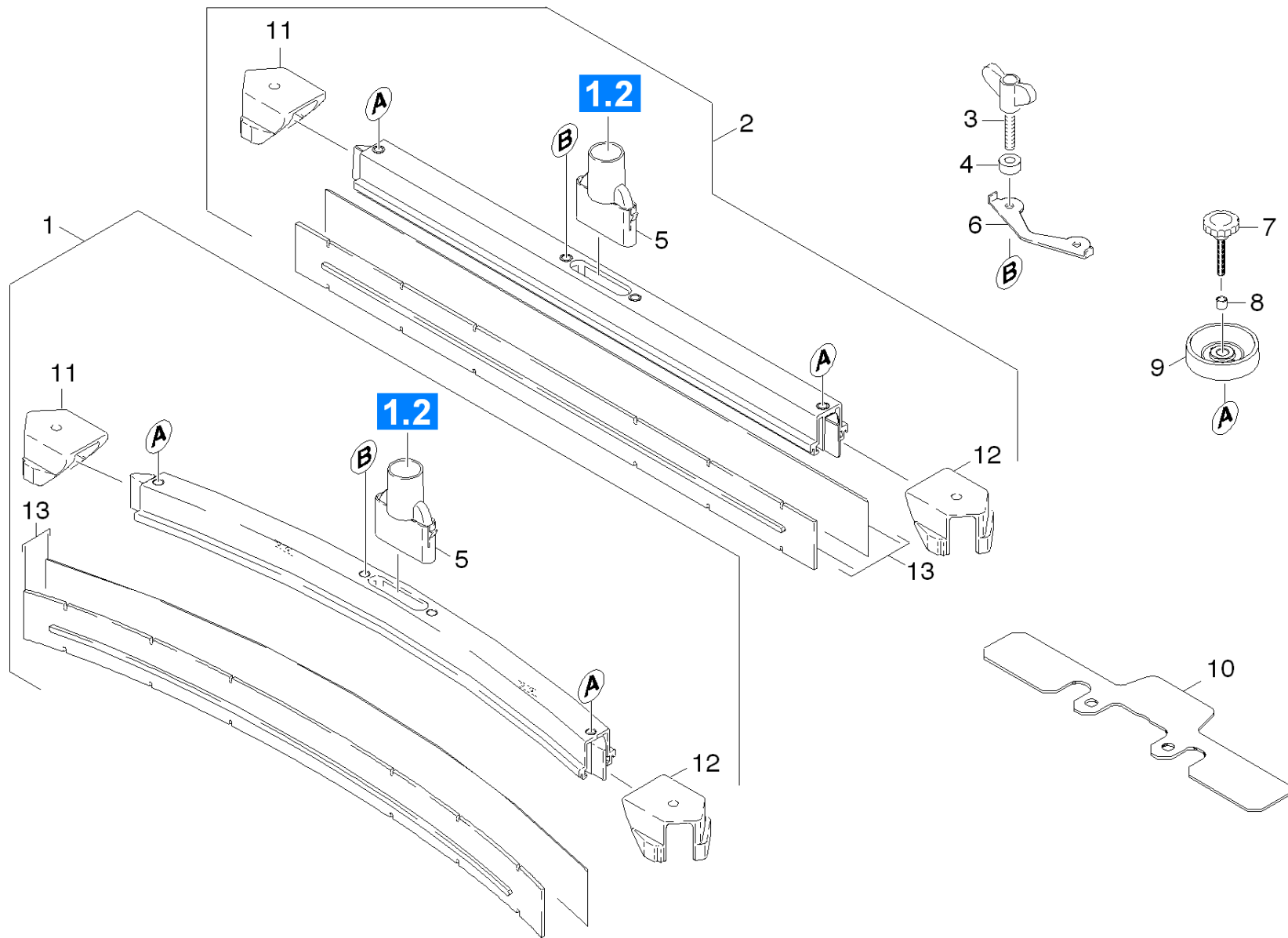
63 Individual parts (0.165-239.0)

ET/VT (spare/wear parts)	Pos	Material #	Name	Qty.	Unit	from ser.nr.	up to ser.nr.	var. information	Footnote text
	55	6.303-315.0	Screw 8 x 35	10.000	ST				
	56	5.009-612.0	Sheet metal component support BD 45/40	1.000	ST				
X-X	57	7.312-166.0	Toothed lock washer A8,4-FSt-A3E DIN 67	10.000	ST				
	58	5.115-690.0	Cover washer	1.000	ST				
X-X	59	7.311-510.0	Hexagon nut M 8-8-A2E ISO 7040	1.000	ST				
X-X	62	5.317-187.0	Bolt feed roll BR	1.000	ST				VERSION 2
X-X	63	5.481-411.0	Pedal feed roll	1.000	ST				

70 Suction bar (0.141-030.0)

Pos	Material #	Name	Qty.	Unit	Footnote text
71	0.141-031.0	Suction bar	1.000	ST	VERSION 1
72	0.164-835.0	Suction bar	1.000	ST	VERSION 2
73	0.141-034.0	Suction beam retraction	1.000	ST	

71 Suction bar (0.141-031.0)

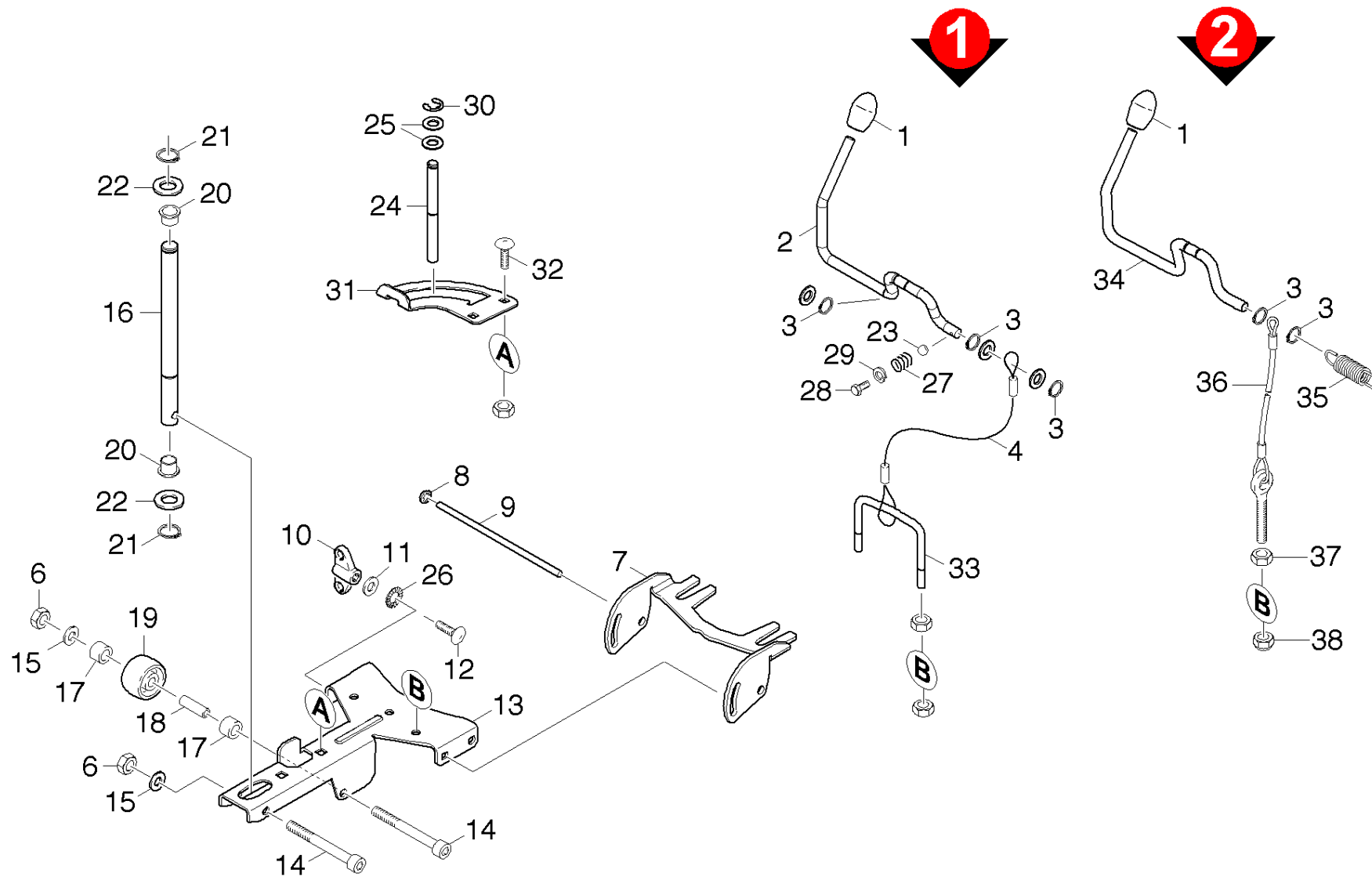


71 Suction bar (0.141-031.0)

ET/VT (spare/wear parts)	Pos	Material #	Name	Qty.	Unit	from ser.nr.	up to ser.nr.	Footnote text
X	1	4.777-071.0	Suction bar curved	1.000	ST	0000000000	0000000000	
X-X	2	4.777-306.0	Suction bar straight 850 AB oLR	1.000	ST	0000000000	0000000000	
X-X	3	5.305-296.0	Wing screw M8x40 VA	2.000	ST			
X-X	4	5.112-810.0	Sleeve VA	2.000	ST			
X-X	5	5.031-989.0	Suction nipple	1.000	ST	0000000000	0000000000	
X-X	6	5.007-217.0	Plate	1.000	ST	0000000000	0000000000	
X-X	7	6.321-239.0	Star grip VA Ø50x43	2.000	ST			
X-X	8	5.094-231.0	Sleeve suction bar in VA	2.000	ST			
X-X	9	5.515-267.0	Deflector roll suction bar	2.000	ST	0000000000	0000000000	
X	10	5.128-339.0	Additional weight suction bar	1.000	ST			
X-X	11	5.031-991.0	End piece right	1.000	ST	0000000000	0000000000	
X-X	12	5.031-990.0	End piece left	1.000	ST	0000000000	0000000000	
X-X	13	6.273-207.0	Rubber lip set oil resistant BR-BD530,55	1.000	ZSA	0000000000	0000000000	OIL RESISTANT
X-X	13	6.273-229.0	Rubber lip set anti stripe oil resistant	1.000	ST	0000000000	0000000000	ANTI-STRIP, OIL RESISTANT
X-X	13	6.273-213.0	Rubber lip set standard	1.000	ZSA	0000000000	0000000000	STANDARD

72 Suction bar (0.164-835.0)

ET/VT (spare/wear parts)	Pos	Material #	Name	Qty.	Unit	from ser.nr.	up to ser.nr.	var. information	Footnote text
X-X	1	6.273-207.0	Rubber lip set oil resistant BR-BD530,55	1.000	ZSA	0000000000	0000000000		OIL RESISTANT
X-X	1	6.273-229.0	Rubber lip set anti stripe oil resistant	1.000	ST				ANTI-STRIP, OIL RESISTANT
X-X	1	6.273-290.0	BLADES FOR TEXTURED FLOORS	1.000	ST				CLOSED, OIL RESISTANT
X-X	1	6.273-213.0	Rubber lip set standard	1.000	ZSA				STANDARD
X-X	2	4.777-416.0	Suction bar curved 850mm	1.000	ST				VERSION 2 - 6 DRILLINGS
X-X	2	4.777-316.0	Suction bar curved 850 AB oLR	1.000	ST	0000000000	0000000000		VERSION 1 - 4 DRILLINGS
X	3	5.031-993.0	End piece inside right	1.000	ST	0000000000	0000000000		VERSION 1
X-X	4	5.031-991.0	End piece right	1.000	ST	0000000000	0000000000		
X-X	5	5.033-601.0	Suction nipple	1.000	ST	0000000000	0000000000		VERSION 2
	5	5.033-669.0	Suction nipple	1.000	ST				VERSION 1
X-X	6	7.306-142.0	Cylinder head screw M 8x25-A4-70 ISO 47	2.000	ST				
X-X	7	7.312-017.0	Washer 8-A2 ISO 7089	2.000	ST				
X-X	8	4.777-406.0	Suction bar straight 850mm	1.000	ST				VERSION 2
X-X	8	4.777-306.0	Suction bar straight 850 AB oLR	1.000	ST	0000000000	0000000000		VERSION 1
X-X	9	5.100-559.0	Suction bar support plate	1.000	ST				
X-X	11	5.007-217.0	Plate	1.000	ST	0000000000	0000000000		
X-X	12	5.112-810.0	Sleeve VA	2.000	ST				STAINLESS STEEL CONST
X-X	13	5.305-296.0	Wing screw M8x40 VA	2.000	ST				STAINLESS STEEL CONST
X	14	5.031-992.0	End piece inside left	1.000	ST	0000000000	0000000000		VERSION 1
X-X	15	5.031-990.0	End piece left	1.000	ST	0000000000	0000000000		
X-X	16	6.321-239.0	Star grip VA Ø50x43	2.000	ST				
X-X	17	5.094-231.0	Sleeve suction bar in VA	2.000	ST				STAINLESS STEEL CONST
X-X	18	5.515-346.0	Deflector roll suction bar D120	2.000	ST			D = 120mmm	VERSION 2
X-X	18	5.515-267.0	Deflector roll suction bar	2.000	ST			D = 100mmm	VERSION 1
X	19	5.128-339.0	Additional weight suction bar	1.000	ST				

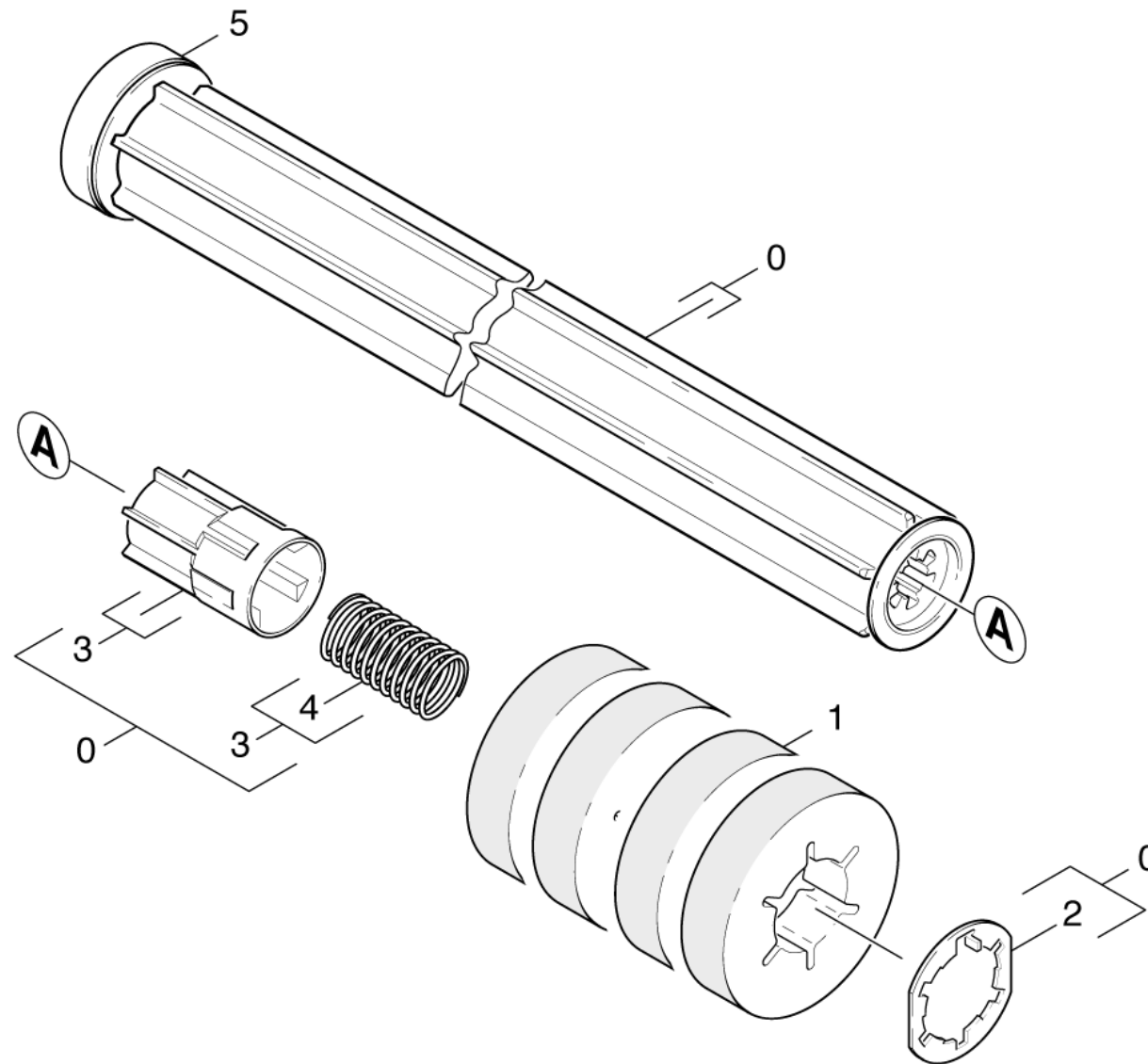


73 Suction beam retraction (0.141-034.0)

ET/VT (spare/wear parts)	Pos	Material #	Name	Qty.	Unit	from ser.nr.	up to ser.nr.	Footnote text
	1	6.321-185.0	Push button	1.000	ST	0000000000	0000000000	
	2	5.034-758.0	Retaining bracket only for replacement	1.000	ST	0000000000	0000000000	VERSION 1
	3	7.343-300.0	Lock washer 7-A2 DIN 6799	2.000	ST	0000000000	0000000000	
X	4	4.172-031.0	Rope suction beam retraction	1.000	ST			VERSION 1
X-X	5	7.311-224.0	Hexagon nut M 8-04-A2E ISO 4035	1.000	ST	0000000000	0000000000	
X-X	6	7.311-427.0	Hexagon nut M8 -04-A2E ISO 10511	3.000	ST	0000000000	0000000000	
X-X	7	5.058-987.0	Rocker suction bar	1.000	ST	0000000000	0000000000	
X	8	6.343-132.0	Lock washer 8	2.000	ST	0000000000	0000000000	
X-X	9	5.107-202.0	Bar	1.000	ST	0000000000	0000000000	
X-X	10	6.310-129.0	Wing nut M 6	2.000	ST	0000000000	0000000000	
X-X	11	7.312-292.0	Washer 6 -A2 ISO 7093-1	2.000	ST	0000000000	0000000000	
X-X	12	7.303-139.0	Saucer-head screw M6x20 -A2 DIN 603	2.000	ST	0000000000	0000000000	
X-X	13	5.009-499.0	Sheet metal component holder suction bar	1.000	ST			
X-X	14	7.306-222.0	Cylinder head screw M8x55 -A4-70 ISO 47	2.000	ST			
X-X	15	7.312-017.0	Washer 8-A2 ISO 7089	2.000	ST	0000000000	0000000000	
	16	5.009-500.0	Bolt suction bar short	1.000	ST			
	17	5.110-736.0	Sleeve	2.000	ST	0000000000	0000000000	
X-X	18	5.112-633.0	Bush	1.000	ST	0000000000	0000000000	
X-X	19	5.435-004.0	Roller D40	1.000	ST	0000000000	0000000000	
X-X	20	6.437-484.0	Bearing bush	2.000	ST	0000000000	0000000000	
	21	7.343-306.0	Lock washer 12-St-A2E DIN 6799	2.000	ST	0000000000	0000000000	
X-X	22	5.115-711.0	Washer	2.000	ST	0000000000	0000000000	
	23	7.401-908.0	Sphere 7 G300 -1.4301 DIN 5401	1.000	ST			VERSION 1
	24	5.009-501.0	Bolt stop suction bar	1.000	ST			
	25	7.312-008.0	Washer 12-200HV-A3E ISO 7090	2.000	ST			

73 Suction beam retraction (0.141-034.0)

ET/VT (spare/wear parts)	Pos	Material #	Name	Qty.	Unit	from ser.nr.	up to ser.nr.	Footnote text
X-X	26	7.312-020.0	Serrated lock washer A6,4-1.4310 DIN679	2.000	ST			
	27	5.332-376.0	Helical spring	1.000	ST			VERSION 1
X-X	28	7.304-393.0	Hexagonal head screw M 8x10-8.8-A2E ISO	1.000	ST			VERSION 1
X-X	29	7.313-015.0	Spring washer B 8-1.4310 DIN 127	1.000	ST			VERSION 1
X-X	30	7.343-205.0	Lock washer 9-St-A2E DIN 6799	1.000	ST			
	31	5.009-576.0	Plate guide suction bar	1.000	ST			
X-X	32	7.303-202.0	Saucer-head screw M8x16-A2 DIN 603	2.000	ST			
	33	5.034-829.0	Retaining bracket suction beam retractio	1.000	ST			VERSION 1
	34	5.034-874.0	Retaining bracket	1.000	ST			VERSION 2
	35	6.330-431.0	Extension spring	1.000	ST			VERSION 2
X-X	36	4.172-025.0	Rope complete	1.000	ST			VERSION 2
X-X	37	7.311-224.0	Hexagon nut M 8-04-A2E ISO 4035	1.000	ST			VERSION 2
X-X	38	7.311-427.0	Hexagon nut M8 -04-A2E ISO 10511	1.000	ST			VERSION 2



80 Roll pad (0.141-035.0)

ET/VT (spare/wear parts)	Pos	Material #	Name	Qty.	Unit	from ser.nr.	up to ser.nr.
X-X	0	4.762-415.0	Roll Pad BR55	1.000	ST		
	1	6.369-735.0	Pad white with sleeve	1.000	ZSA	0000000000	0000000000
X-X	1	6.369-733.0	Pad green with sleeve	1.000	ZSA	0000000000	0000000000
X-X	1	6.369-734.0	Pad red with sleeve	1.000	ZSA	0000000000	0000000000
X-X	1	4.114-010.0	Microfibre roll complete BR 55/40	1.000	ST		
	1	6.369-732.0	Pad yellow with sleeve	1.000	ZSA	0000000000	0000000000
	2	4.115-003.0	Washer closure	1.000	ST	0000000000	0000000000
	3	5.120-313.0	Hub pad roll BR VS	1.000	ST	0000000000	0000000000
	4	5.332-469.0	Helical spring	1.000	ST	0000000000	0000000000
X-X	5	4.038-677.0	Sheet metal component thread deflector	1.000	ST	0000000000	0000000000

90 Metering (0.141-300.0)

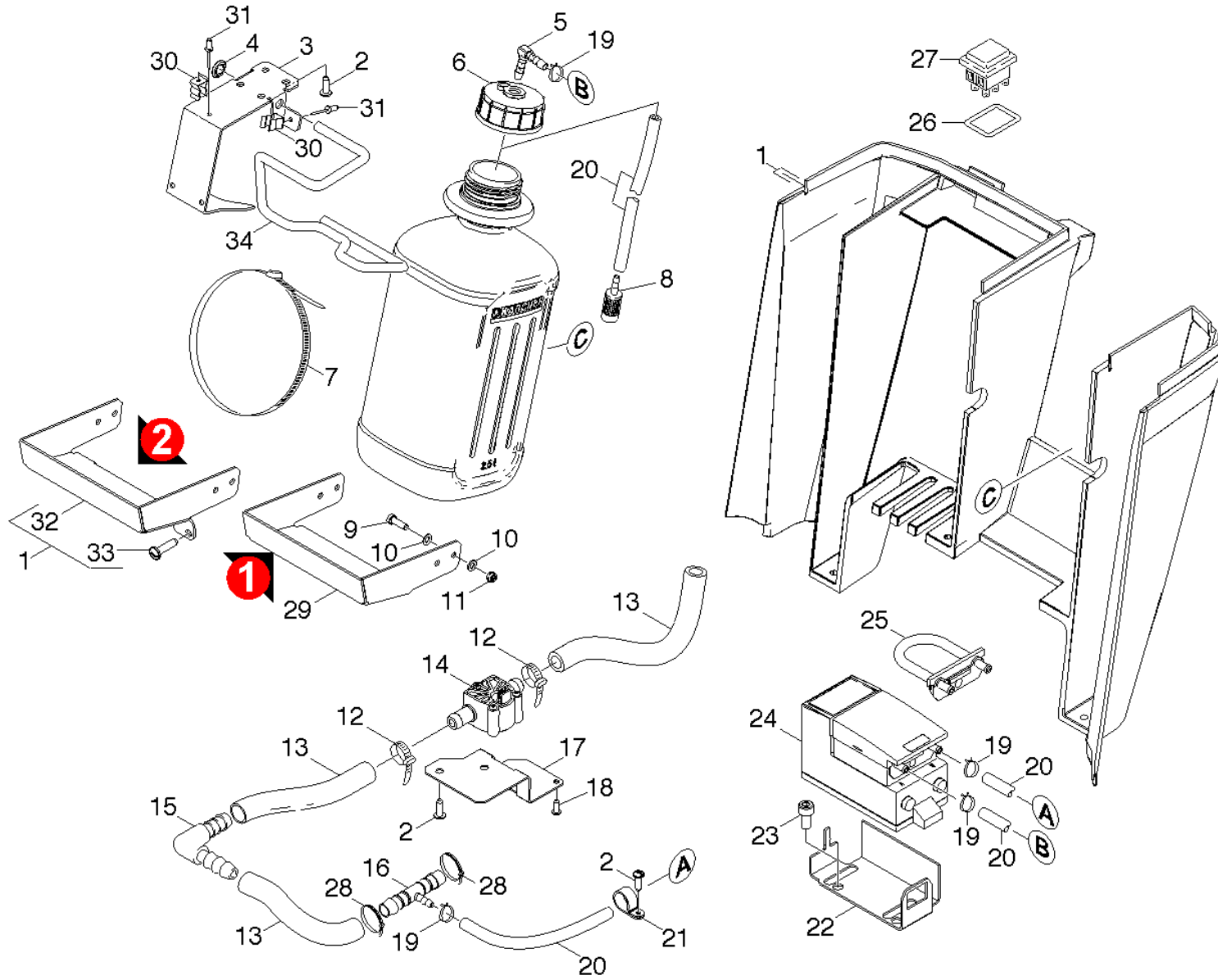
Pos	Material #	Name	Qty.	Unit	var. information
91	0.141-040.0	RM metering	1.000	ST	VERSION 1
92	0.141-301.0	RM metering	1.000	ST	VERSION 2

91 RM metering (0.141-040.0)

ET/VT (spare/wear parts)	Pos	Material #	Name	Qty.	Unit	from ser.nr.	up to ser.nr.	Footnote text
	1	5.032-901.0	Covering cap electronics BAT/PACK Dose	1.000	ST	0000000000	0000000000	
	2	5.008-857.0	Tank cleaning agents	1.000	ST	0000000000	0000000000	
	3	5.008-904.0	Plate holder magnet	1.000	ST	0000000000	0000000000	
	4	6.414-893.0	Ventilating valve cleaning agents	1.000	ST			
	5	5.391-227.0	Label switch yellow	1.000	ST	0000000000	0000000000	
X	6	6.362-910.0	O-Ring seal 5,0 X 1,0 -EPDM	2.000	ST	0000000000	0000000000	
	7	7.401-917.0	Sphere 10,0 G100-1.4301 DIN 5401	1.000	ST	0000000000	0000000000	
	8	5.332-259.0	Helical spring	1.000	ST	0000000000	0000000000	
X-X	9	7.343-303.0	Locking ring 8-A2 DIN 6799	1.000	ST			
X-X	10	6.391-341.0	Hose chemistry DN 6	1.000	M			TO ORDER AS CUT GOODS
	11	6.385-993.0	Hose stem DN 6 - M10x1	1.000	ST			
	12	7.311-110.0	Hexagon nut M16x1,5-04-A2E ISO 8675	1.000	ST	0000000000	0000000000	
X	13	7.312-057.0	Washer 16 -A2 ISO 7090	1.000	ST	0000000000	0000000000	
	14	6.362-577.0	O-Ring seal 11,0 X 1,5-NBR 70	1.000	ST	0000000000	0000000000	
	15	5.032-913.0	Holder spring closure RM-FI.	1.000	ST	0000000000	0000000000	
X-X	16	4.060-625.0	Cover cleaning agents	1.000	ST			
	17	6.363-304.0	Seal	1.000	ST	0000000000	0000000000	
X-X	18	7.303-107.0	Screw 5x16 -10.9-P2R (K-In6Rd)	7.000	ST	0000000000	0000000000	
	19	5.332-553.0	Spring blank holder bottle RM	1.000	ST	0000000000	0000000000	
X-X	20	6.641-474.0	Cable tape 8-210	6.000	ST	0000000000	0000000000	
	21	6.632-400.0	Switch chemistry	1.000	ST	0000000000	0000000000	
X	22	6.395-188.0	T-Piece 12-6-12	1.000	ST	0000000000	0000000000	
X-X	23	6.390-892.0	Spiral hose NW12	1.000	M			TO ORDER AS CUT GOODS
X-X	24	6.429-038.0	Flowmetre	1.000	ST	0000000000	0000000000	
X	25	2.882-635.0	Conversion kit hose dosing pump	1.000	ST			

91 RM metering (0.141-040.0)

ET/VT (spare/wear parts)	Pos	Material #	Name	Qty.	Unit	from ser.nr.	up to ser.nr.	Footnote text
X-X	26	6.762-205.0	Dosing pump connection DN6	1.000	ST			
	27	7.303-106.0	Screw 4x12 -10.9-R2R (IN6RD)	3.000	ST	0000000000	0000000000	
	29	7.306-040.0	Cylinder head screw M8x16 -8.8-A2E ISO4	2.000	ST	0000000000	0000000000	
X-X	30	7.303-112.0	Screw 6x20 -10.9-R2R (In6Rd)	2.000	ST			
X-X	31	5.115-150.0	Washer	2.000	ST			
X	32	6.389-924.0	Hose clip	2.000	ST			
X-X	33	5.443-556.0	Hose dosing pump only for replacement	1.000	ST			
	34	5.340-001.0	Connecting pipe	1.000	ST			
X-X	35	4.040-708.0	Set cleaning agents bottle	1.000	ST			
	37	5.008-905.0	Plate holder adapter RM	1.000	ST			
	38	5.409-549.0	Adapter bottle cleaning agents	1.000	ST			



92 RM metering (0.141-301.0)

ET/VT (spare/wear parts)	Pos	Material #	Name	Qty.	Unit	Footnote text
	1	4.100-236.0	Covering cap electronics complete blau B	1.000	ST	
X-X	2	7.303-107.0	Screw 5x16 -10.9-P2R (K-In6Rd)	7.000	ST	
	3	5.009-721.0	Sheet metal component bracket cleaning a	1.000	ST	
	4	6.343-147.0	Quick-fastener	1.000	ST	
	5	6.386-575.0	Elbow screw connector	1.000	ST	
X-X	6	5.064-297.0	Cover cleaning agents	1.000	ST	
X-X	7	6.641-463.0	Cable tape	1.000	ST	
X	8	5.731-652.0	Filter with weight	1.000	ST	
	9	7.306-077.0	Screw M5x16 -8.8-R2R (In6Rd)	4.000	ST	VERSION 1
X-X	10	7.312-002.0	Washer 5-200HV-A3E ISO 7090	8.000	ST	VERSION 1
X-X	11	7.311-421.0	Hexagon nut M 5-04-A2E ISO 10511	4.000	ST	VERSION 1
X-X	12	6.641-474.0	Cable tape 8-210	2.000	ST	
X-X	13	6.390-892.0	Spiral hose NW12	1.000	M	TO ORDER AS CUT GOODS
X-X	14	6.429-038.0	Flowmetre	1.000	ST	
	15	6.373-876.0	Hose clip	1.000	ST	
X	16	6.395-188.0	T-Piece 12-6-12	1.000	ST	
	17	5.005-000.0	Plate flowmetre	1.000	ST	
	18	7.303-106.0	Screw 4x12 -10.9-R2R (IN6RD)	2.000	ST	
X	19	6.389-924.0	Hose clip	4.000	ST	
X-X	20	6.391-341.0	Hose chemistry DN 6	1.000	M	TO ORDER AS CUT GOODS
	21	6.641-460.0	Cable clamp	1.000	ST	
	22	5.057-858.0	Sheet metal component fixing dosing pump	1.000	ST	
	23	7.306-040.0	Cylinder head screw M8x16 -8.8-A2E ISO4	2.000	ST	
X-X	24	6.762-205.0	Dosing pump connection DN6	1.000	ST	
X-X	25	5.443-556.0	Hose dosing pump only for replacement	1.000	ST	

92 RM metering (0.141-301.0)

ET/VT (spare/wear parts)	Pos	Material #	Name	Qty.	Unit	Footnote text
	26	5.391-227.0	Label switch yellow	1.000	ST	
	27	6.632-400.0	Switch chemistry	1.000	ST	
X-X	28	6.641-474.0	Cable tape 8-210	2.000	ST	
	29	5.009-722.0	Sheet metal component support cleaning a	1.000	ST	VERSION 1
	30	6.330-410.0	Spring clip X130-8L	2.000	ST	
X-X	31	6.315-043.0	Blind rivet 3,0	2.000	ST	
	32	5.100-582.0	Sheet metal component support cleaning a	1.000	ST	VERSION 2
X-X	33	7.303-112.0	Screw 6x20 -10.9-R2R (In6Rd)	2.000	ST	VERSION 2
	34	5.034-828.0	Retaining bracket closure	1.000	ST	