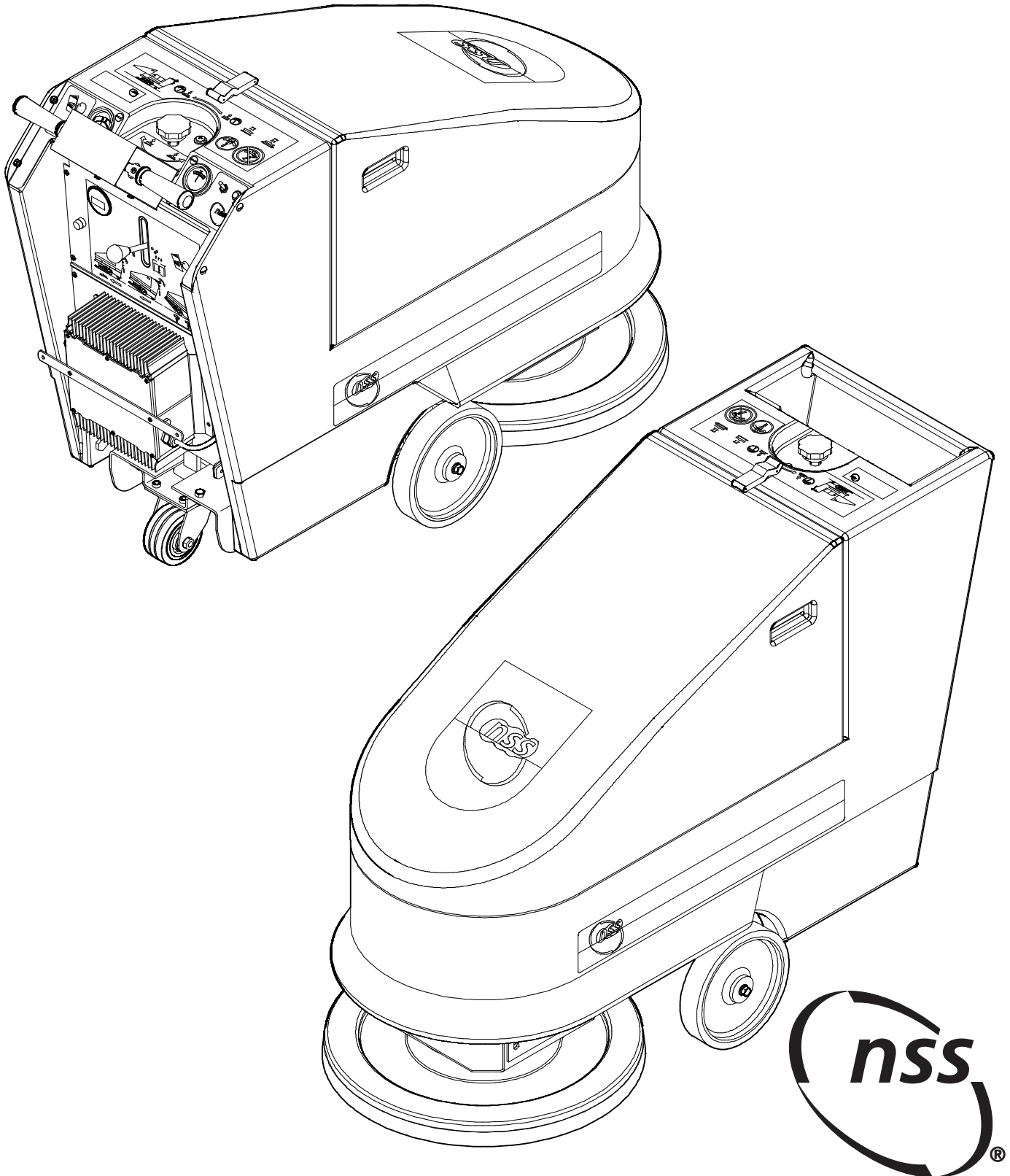


PARTS LIST

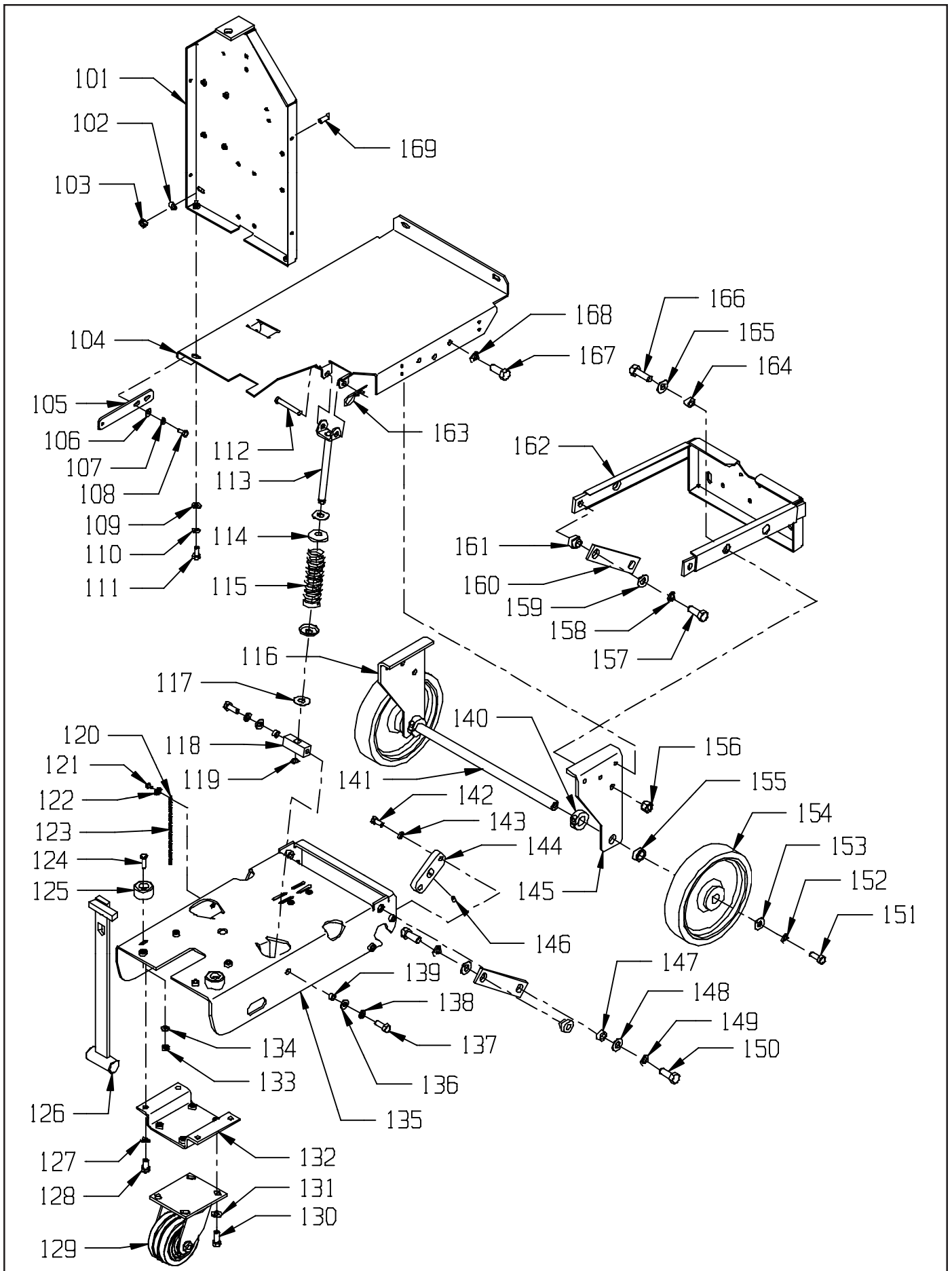
CHARGER 2025 AB

CHARGER 2025 DB



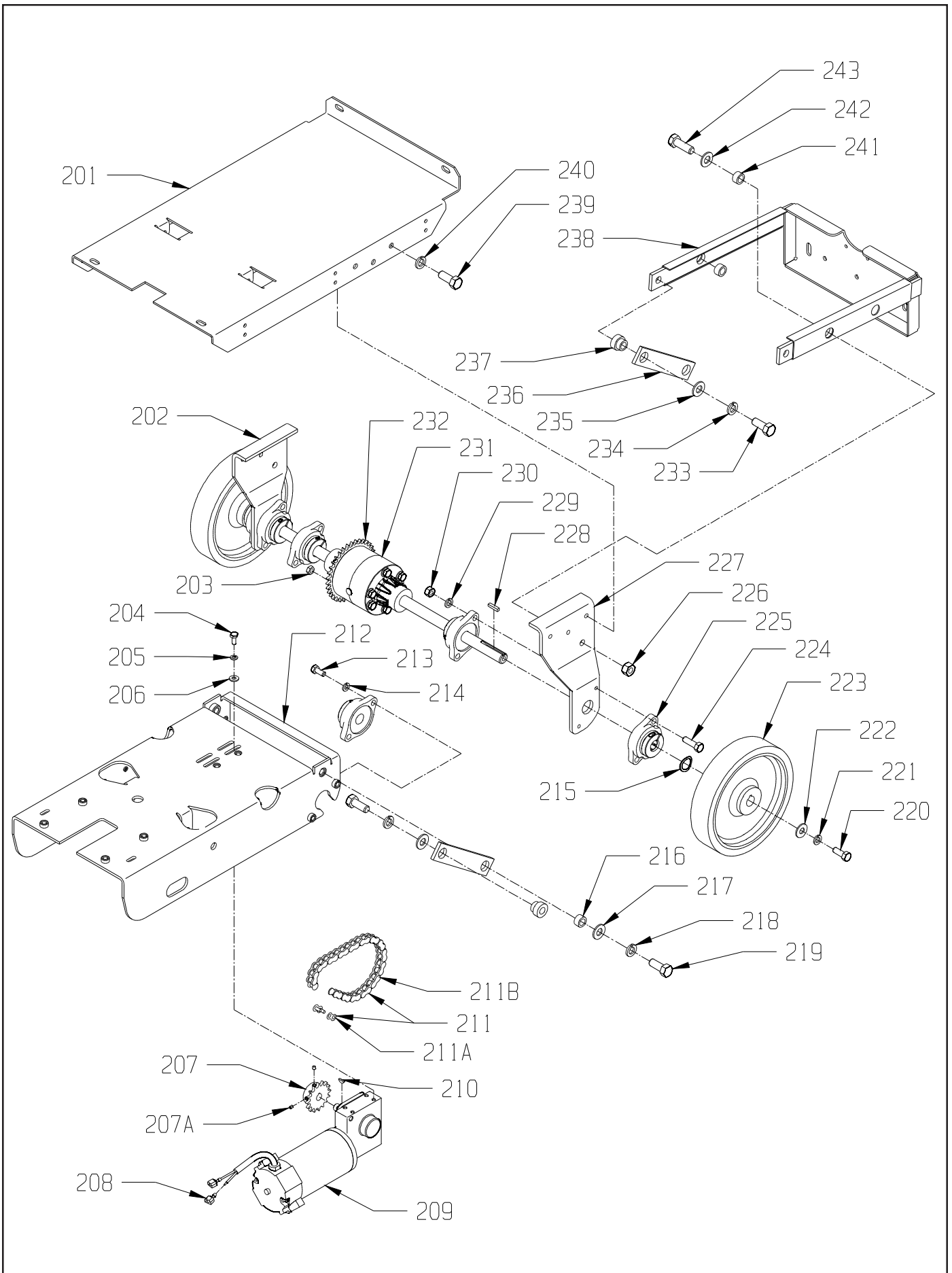
| <u>ITEM</u> | <u>PART NO.</u> | <u>DESCRIPTION</u> | <u>QTY.</u> |
|-------------|-----------------|---|-------------|
| 101 | 6495511 | CONTROL FRAME WELDMENT | 1 |
| 102 | 9121390 | 11/32 I.D. X 11/16 O.D. X .051/.080 THICK SAE FLAT WASHER (5/16) - PACK OF 10 | 2 |
| 103 | 9121450 | 5/16-18 HEX NUT WITH NY-LOK INSERT - PACK OF 5 | 2 |
| 104 | 6495071 | BASE PLATE | 1 |
| 105 | 6495831 | HINGE PLATE | 2 |
| 106 | 9120930 | 9/32 I.D. X 5/8 O.D. X .051/.080 THICK SAE FLAT WASHER (1/4) - PACK OF 10 | 4 |
| 107 | 9120880 | 1/4 SPLIT LOCK WASHER - PACK OF 10 | 4 |
| 108 | 9121210 | 1/4-20 X 5/8 HEX BOLT - PACK OF 10 | 4 |
| 109 | 9121390 | 11/32 I.D. X 11/16 O.D. X .051/.080 THICK SAE FLAT WASHER (5/16) - PACK OF 10 | 2 |
| 110 | 9121520 | 5/16 SPLIT LOCK WASHER - PACK OF 10 | 2 |
| 111 | 9121640 | 5/16-18 X 3/4 HEX BOLT - PACK OF 5 | 2 |
| 112 | 7690311 | 3/8 DIAMETER X 2.5 CLEVIS PIN | 2 |
| 113 | 6495881 | SPRING GUIDE | 2 |
| 114 | 3190191 | STRING GUARD | 4 |
| 115 | 6495871 | COMPRESION SPRING | 2 |
| 116 | 6495241 | BASE LEG CHARGER - LEFT | 1 |
| 117 | 5390811 | 1/2 X 1 X .07 THICK FLAT WASHER - NYLATRON | 4 |
| 118 | 6495891 | PIVOT | 2 |
| 119 | 9122496 | RETAINING RING - PACK OF 8 | 1 |
| 120 | 6491871 | END COUPLING ROUND BEAD CHAIN | 1 |
| 121 | 9120380 | 10-24 X 3/8 ROUND HEAD PHILLIPS MACHINE SCREW - PACK OF 10 | 1 |
| 122 | 9120330 | 10 EXTERNAL STAR LOCK WASHER - PACK OF 10 | 1 |
| 123 | 6491860 | ROUND BEAD CHAIN (CUT LENGTH 6") | .5' |
| 124 | 9121270 | 1/4-20 X 1 HEX BOLT - PACK OF 10 | 2 |
| 125 | 4894461 | RUBBER STOP | 2 |
| 126 | 6490701 | CATCH ASSEMBLY | 1 |
| 127 | 9122100 | 3/8 SPLIT LOCK WASHER - PACK OF 10 | 4 |
| 128 | 9122220 | 3/8-16 X 3/4 HEX BOLT - PACK OF 5 | 4 |
| 129 | 6492061 | RED 4 INCH CASTER - INCLUDES: | 1 |
| | 4490391 | CASTER WHEEL WITH BEARING | 1 |
| 130 | 9122260 | 3/8-16 X 1 HEX BOLT - PACK OF 2 | 4 |
| 131 | 9122100 | 3/8 SPLIT LOCK WASHER - PACK OF 10 | 4 |
| 132 | 6495141 | CASTER MOUNT | 1 |
| 133 | 9120900 | 1/4-20 HEX NUT WITH NY-LOK INSERT - PACK OF 10 | 2 |
| 134 | 9120930 | 9/32 I.D. X 5/8 O.D. X .051/.080 THICK SAE FLAT WASHER (1/4) - PACK OF 10 | 2 |
| 135 | 6495151 | FRAME | 1 |
| 136 | 9122180 | 13/32 I.D. X 13/16 O.D. X .051/.080 THICK WROUGHT WASHER (3/8) - PACK OF 10 | 4 |
| 137 | 9122260 | 3/8-16 X 1 HEX BOLT - PACK OF 2 | 4 |
| 138 | 9122100 | 3/8 SPLIT LOCK WASHER - PACK OF 10 | 4 |
| 139 | 2691181 | PIVOT SPACER, STABILIZER BAR | 4 |
| 140 | 6490201 | SUPPORT-LEG, SHAFT COLLAR | 2 |
| 141 | 4492546 | AXLE, BASE PLATED | 1 |
| 142 | 9122260 | 3/8-16 X 1 HEX BOLT - PACK OF 2 | 4 |
| 143 | 9122100 | 3/8 SPLIT LOCK WASHER - PACK OF 10 | 4 |
| 144 | 6495271 | AXLE BLOCK | 2 |
| 145 | 6495231 | BASE LEG CHARGER - RIGHT | 1 |
| 146 | 9120637 | 1/4-20 X 1/4 SET SCREW - CUP POINT - PACK OF 5 | 2 |
| 147 | 4492791 | BUSHING, PIVOT | 2 |
| 148 | 9122450 | 17/32 I.D. X 1 1/16 O.D. X .074/.121 THICK SAE FLAT WASHER (1/2) - PACK OF 5 | 2 |
| 149 | 9122420 | 1/2 SPLIT LOCK WASHER - PACK OF 5 | 2 |
| 150 | 9122540 | 1/2-13 X 1 1/4 HEX BOLT - PACK OF 1 | 2 |
| 151 | 9122260 | 3/8-16 X 1 HEX BOLT - PACK OF 2 | 2 |
| 152 | 9122100 | 3/8 SPLIT LOCK WASHER - PACK OF 10 | 2 |
| 153 | 9122180 | 13/32 I.D. X 13/16 O.D. X .051/.080 THICK WROUGHT WASHER (3/8) - PACK OF 10 | 2 |
| 154 | 4490511 | WHEEL - 8" | 2 |
| 155 | 4492921 | WHEEL SPACER | 2 |
| 156 | 9122495 | 1/2-13 HEX NUT WITH NY-LOK INSERT - THIN - PACK OF 1 | 2 |
| 157 | 9122540 | 1/2-13 X 1 1/4 HEX BOLT - PACK OF 1 | 2 |
| 158 | 9122420 | 1/2 SPLIT LOCK WASHER - PACK OF 5 | 2 |
| 159 | 9122450 | 17/32 I.D. X 1 1/16 O.D. X .074/.121 THICK SAE FLAT WASHER (1/2) - PACK OF 5 | 2 |
| 160 | 6490691 | LIFT ARM | 2 |
| 161 | 4495141 | LIFT ARM SPACER | 2 |
| 162 | 6495501 | PIVOT WELDMENT | 1 |
| 163 | 7690491 | #6 HAIR COTTER PIN | 2 |
| 164 | 4492791 | BUSHING, PIVOT | 2 |
| 165 | 9122450 | 17/32 I.D. X 1 1/16 O.D. X .074/.121 THICK SAE FLAT WASHER (1/2) - PACK OF 5 | 2 |
| 166 | 9122540 | 1/2-13 X 1 1/4 HEX BOLT - PACK OF 1 | 2 |
| 167 | 9122220 | 3/8-16 X 3/4 HEX BOLT - PACK OF 5 | 6 |
| 168 | 9122100 | 3/8 SPLIT LOCK WASHER - PACK OF 10 | 6 |
| 169 | 9121470 | 5/16-18 X 1 FLAT HEAD PHILLIPS MACHINE SCREW - PACK OF 5 | 4 |

BASE - AB



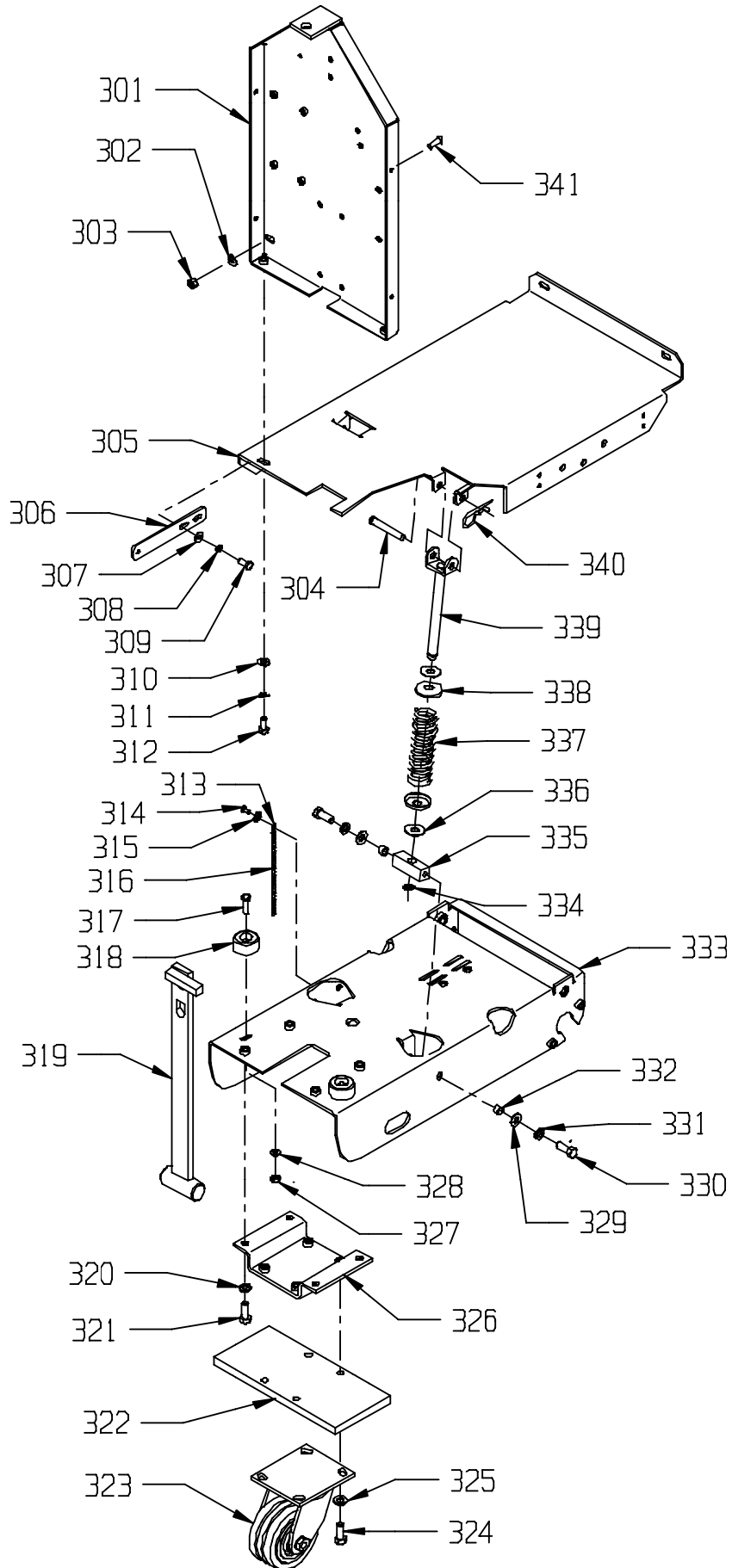
| <u>ITEM</u> | <u>PART NO.</u> | <u>DESCRIPTION</u> | <u>QTY.</u> |
|-------------|-----------------|---|-------------|
| 201 | 6495071 | BASE PLATE | 1 |
| 202 | 6495261 | BASE LEG CHARGER WHEEL DRIVE - LEFT | 1 |
| 203 | 9121450 | 5/16-18 HEX NUT WITH NY-LOK INSERT - PACK OF 5 | 4 |
| 204 | 9121210 | 1/4-20 X 5/8 HEX BOLT - PACK OF 10 | 4 |
| 205 | 9120880 | 1/4 SPLIT LOCK WASHER - PACK OF 10 | 4 |
| 206 | 9120930 | 9/32 I.D. X 5/8 O.D. X .051/.080 THICK SAE FLAT WASHER (1/4) - PACK OF 10 | 4 |
| 207 | 6495531 | SPROCKET 40BS12H - INCLUDES: | 1 |
| 207A | 9120860 | 1/4-20 X 3/8 SET SCREW - CUP POINT - PACK OF 5 | 2 |
| 208 | 5490161 | FULLY INSULATED FEMALE TERMINAL 14-16 GAGE | 2 |
| 209 | 6495291 | DRIVE MOTOR 36 VOLT | 1 |
| 210 | 9120311 | 1/8 X 1/2 WOODRUFF KEY - ALLOY - PACK OF 1 | 1 |
| 211 | 6495569 | #40 ROLLER CHAIN 33 LINKS + MASTER - INCLUDES: | 1 |
| 211A | 2795211 | LINK - MASTER #40 CHAIN | 1 |
| 211B | 6495541 | #40 ROLLER CHAIN 33 LINKS NO MASTER | 1 |
| 212 | 6495151 | FRAME | 1 |
| 213 | 9122260 | 3/8-16 X 1 HEX BOLT - PACK OF 2 | 4 |
| 214 | 9122100 | 3/8 SPLIT LOCK WASHER - PACK OF 10 | 4 |
| 215 | 9123110 | 13/16 I.D. X 1 1/8 O.D. X .13 THICK WAVE SPRING WASHER (3/4) - PK OF 1 | 2 |
| 216 | 4492791 | BUSHING, PIVOT | 2 |
| 217 | 9122450 | 17/32 I.D. X 1 1/16 O.D. X .074/.121 THICK SAE FLAT WASHER (1/2)-PK OF 5 | 2 |
| 218 | 9122420 | 1/2 SPLIT LOCK WASHER - PACK OF 5 | 2 |
| 219 | 9122540 | 1/2-13 X 1 1/4 HEX BOLT - PACK OF 1 | 2 |
| 220 | 9121640 | 5/16-18 X 3/4 HEX BOLT - PACK OF 5 | 2 |
| 221 | 9121520 | 5/16 SPLIT LOCK WASHER - PACK OF 10 | 2 |
| 222 | 9121985 | 13/32 I.D. X 1 O.D. X .12 THICK FLAT WASHER (11 GAGE) - PACK OF 1 | 2 |
| 223 | 6495391 | DRIVE WHEEL 9 X 1 5/8 | 2 |
| 224 | 9122321 | 3/8-16 X 1 3/4 SOCKET HEAD CAP SCREW - PACK OF 2 | 4 |
| 225 | 6495061 | PILLOW BLOCK BEARING WITH GRIP-IT BEARING RING | 6 |
| 226 | 9122495 | 1/2-13 HEX NUT WITH NY-LOK INSERT - THIN - PACK OF 1 | 2 |
| 227 | 6495251 | BASE LEG CHARGER WHEEL DRIVE - RIGHT | 1 |
| 228 | 9120829 | 3/16 SQUARE X 1 1/2 LONG KEY - STEEL - PACK OF 1 | 2 |
| 229 | 9122100 | 3/8 SPLIT LOCK WASHER - PACK OF 10 | 4 |
| 230 | 9121990 | 3/8-16 HEX JAM NUT - PACK OF 10 | 4 |
| 231 | 6495101 | DIFFERENTIAL - SHORT | 1 |
| 232 | 6495521 | SPROCKET 40A26 | 1 |
| 233 | 9122540 | 1/2-13 X 1 1/4 HEX BOLT - PACK OF 1 | 2 |
| 234 | 9122420 | 1/2 SPLIT LOCK WASHER - PACK OF 5 | 2 |
| 235 | 9122450 | 17/32 I.D. X 1 1/16 O.D. X .074/.121 THICK SAE FLAT WASHER (1/2)-PK OF 5 | 2 |
| 236 | 6490691 | LIFT ARM | 2 |
| 237 | 4495141 | LIFT ARM SPACER | 2 |
| 238 | 6495501 | PIVOT WELDMENT | 1 |
| 239 | 9122220 | 3/8-16 X 3/4 HEX BOLT - PACK OF 5 | 6 |
| 240 | 9122100 | 3/8 SPLIT LOCK WASHER - PACK OF 10 | 6 |
| 241 | 4492791 | BUSHING, PIVOT | 2 |
| 242 | 9122450 | 17/32 I.D. X 1 1/16 O.D. X .074/.121 THICK SAE FLAT WASHER (1/2)-PK OF 5 | 2 |
| 243 | 9122540 | 1/2-13 X 1 1/4 HEX BOLT - PACK OF 1 | 2 |

DRIVE - DB



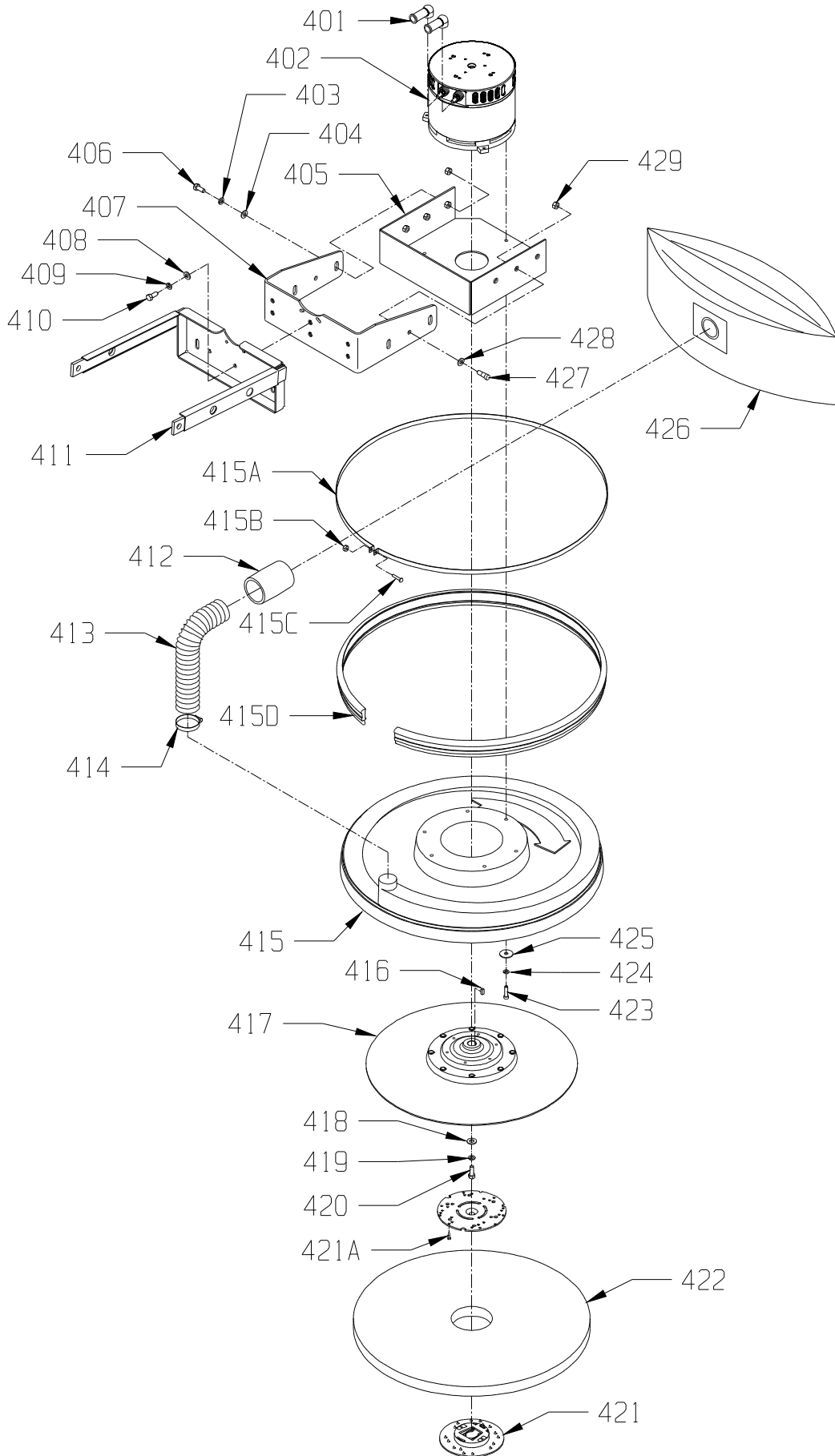
| <u>ITEM</u> | <u>PART NO.</u> | <u>DESCRIPTION</u> | <u>QTY.</u> |
|-------------|-----------------|---|-------------|
| 301 | 6495511 | CONTROL FRAME WELDMENT | 1 |
| 302 | 9121390 | 11/32 ID X 11/16 OD X .051/.080 THICK SAE FLAT WASHER (5/16) - PK OF 10 | 2 |
| 303 | 9121450 | 5/16-18 HEX NUT WITH NY-LOK INSERT - PACK OF 5 | 2 |
| 304 | 7690311 | 3/8 DIAMETER X 2.5 CLEVIS PIN | 2 |
| 305 | 6495071 | BASE PLATE | 1 |
| 306 | 6495831 | HINGE PLATE | 2 |
| 307 | 9120930 | 9/32 I.D. X 5/8 O.D. X .051/.080 THICK SAE FLAT WASHER (1/4) - PACK OF 10 | 4 |
| 308 | 9120880 | 1/4 SPLIT LOCK WASHER - PACK OF 10 | 4 |
| 309 | 9121210 | 1/4-20 X 5/8 HEX BOLT - PACK OF 10 | 4 |
| 310 | 9121390 | 11/32 ID X 11/16 OD X .051/.080 THICK SAE FLAT WASHER (5/16) - PK OF 10 | 2 |
| 311 | 9121520 | 5/16 SPLIT LOCK WASHER - PACK OF 10 | 2 |
| 312 | 9121640 | 5/16-18 X 3/4 HEX BOLT - PACK OF 5 | 2 |
| 313 | 6491871 | END COUPLING ROUND BEAD CHAIN | 1 |
| 314 | 9120380 | 10-24 X 3/8 ROUND HEAD PHILLIPS MACHINE SCREW - PACK OF 10 | 1 |
| 315 | 9120330 | 10 EXTERNAL STAR LOCK WASHER - PACK OF 10 | 1 |
| 316 | 6491860 | ROUND BEAD CHAIN (CUT LENGTH 6") | .5' |
| 317 | 9121270 | 1/4-20 X 1 HEX BOLT - PACK OF 10 | 2 |
| 318 | 4894461 | RUBBER STOP | 2 |
| 319 | 6490701 | CATCH ASSEMBLY | 1 |
| 320 | 9122100 | 3/8 SPLIT LOCK WASHER - PACK OF 10 | 4 |
| 321 | 9122220 | 3/8-16 X 3/4 HEX BOLT - PACK OF 5 | 4 |
| 322 | 6495461 | CASTER BLOCK | 1 |
| 323 | 6492061 | RED 4 INCH CASTER - INCLUDES: | 1 |
| | 4490391 | CASTER WHEEL WITH BEARING | 1 |
| 324 | 9122075 | 3/8-16 X 1 1/2 HEX BOLT - PACK OF 2 | 4 |
| 325 | 9122100 | 3/8 SPLIT LOCK WASHER - PACK OF 10 | 4 |
| 326 | 6495141 | CASTER MOUNT | 1 |
| 327 | 9120900 | 1/4-20 HEX NUT WITH NY-LOK INSERT - PACK OF 10 | 2 |
| 328 | 9120930 | 9/32 I.D. X 5/8 O.D. X .051/.080 THICK SAE FLAT WASHER (1/4) - PACK OF 10 | 2 |
| 329 | 9122180 | 13/32 I.D. X 13/16 O.D. X .051/.080 THICK - PACK OF 10 (3/8) | 4 |
| 330 | 9122260 | 3/8-16 X 1 HEX BOLT - PACK OF 2 | 4 |
| 331 | 9122100 | 3/8 SPLIT LOCK WASHER - PACK OF 10 | 4 |
| 332 | 2691181 | PIVOT SPACER, STABILIZER BAR | 4 |
| 333 | 6495151 | FRAME | 1 |
| 334 | 9122496 | RETAINING RING - PACK OF 8 | 2 |
| 335 | 6495891 | PIVOT | 2 |
| 336 | 5390811 | 1/2 X 1 X .07 THICK FLAT WASHER - NYLATRON | 4 |
| 337 | 6495871 | COMPRESION SPRING | 2 |
| 338 | 3190191 | STRING GUARD | 4 |
| 339 | 6495881 | SPRING GUIDE | 2 |
| 340 | 7690491 | #6 HAIR COTTER PIN | 2 |
| 341 | 9121470 | 5/16-18 X 1 FLAT HEAD PHILLIPS MACHINE SCREW - PACK OF 5 | 2 |

BASE - DB



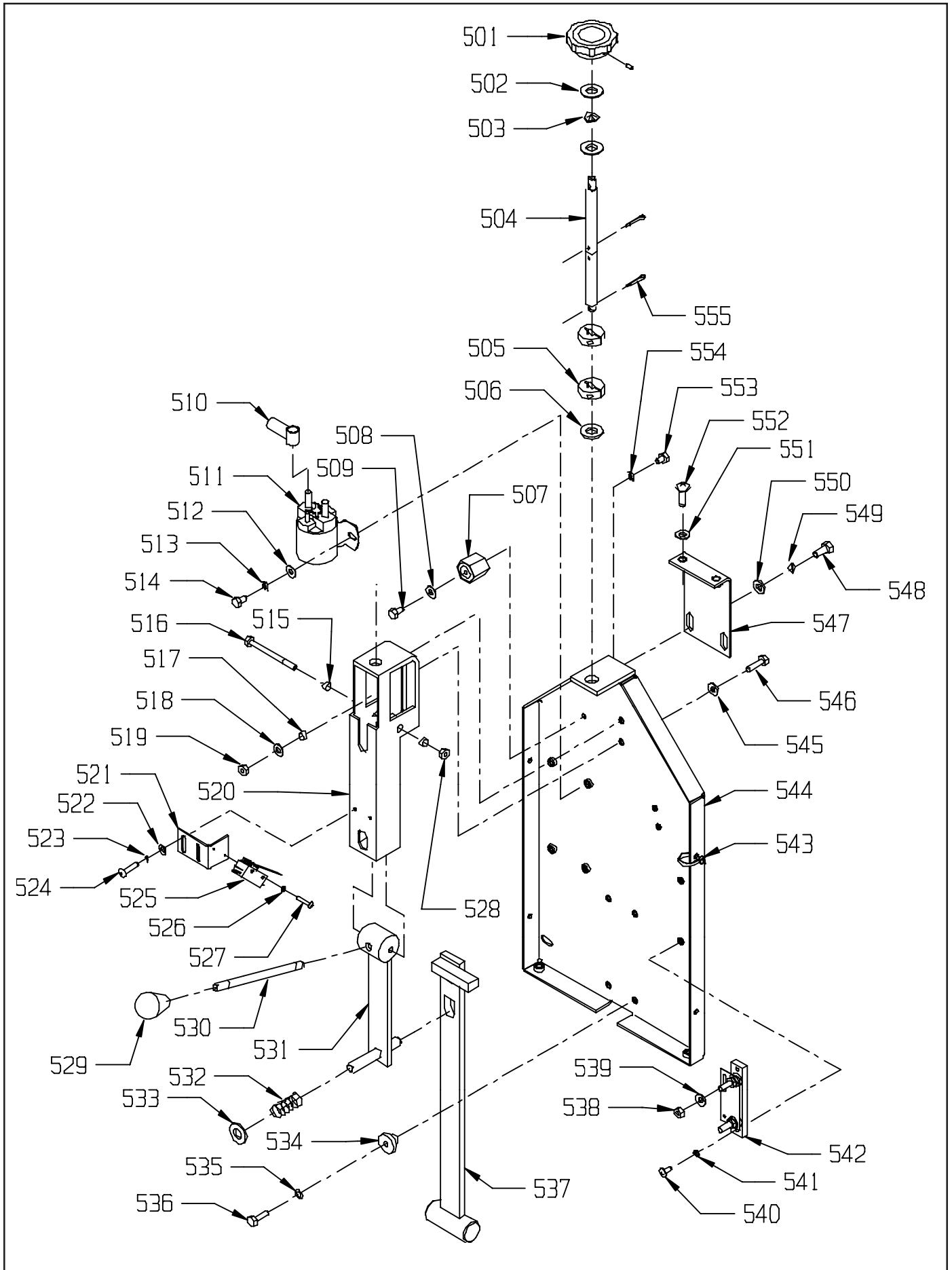
| ITEM | PART NO. | DESCRIPTION | QTY. |
|-------------|-----------------|---|-------------|
| 401 | 6492051 | STUD TERMINAL BOOT - RUBBER | 2 |
| 402 | 6493521 | MOTOR 36 VOLT - 2500 RPM - 2HP | 1 |
| | 6496231 | MOTOR 36 VOLT - 2200 RPM - 3HP | 1 |
| 403 | 9121520 | 5/16 SPLIT LOCK WASHER -PK OF 10- AB MODEL ONLY | 6 |
| 404 | 9121400 | 3/8 ID X 7/8 OD X .064/.104 THK WROUGHT WASHER-PK10-AB MODEL ONLY | 4 |
| 405 | 4492663 | MOTOR MOUNT | 1 |
| 406 | 9121680 | 5/16-18 X 1 HEX BOLT - PACK OF 5 - AB MODEL ONLY | 4 |
| 407 | 6495601 | MOTOR MOUNT MOUNTING FORK - CHARGER 2025 DB | 1 |
| 408 | 9121390 | 11/32 I.D. X 11/16 O.D. X .051/.080 THICK SAE FLAT WASHER (5/16)-PK OF 10 | 3 |
| 409 | 9121520 | 5/16 SPLIT LOCK WASHER - PACK OF 10 | 3 |
| 410 | 9121640 | 5/16-18 X 3/4 HEX BOLT - PACK OF 5 | 3 |
| 411 | 6495501 | PIVOT WELDMENT | 1 |
| 412 | 4495531 | END CUFF - 2" | 1 |
| 413 | 3392561 | VAC EXHAUST HOSE | 1 |
| 414 | 4495441 | HOSE CLAMP, 1 9/16" - 2 1/2" DIAMETER | 1 |
| 415 | 6490729 | CW-FLEXIWALL SHIELD ASSEMBLY - INCLUDES: | 1 |
| 415A | 6490732 | BUMPER STRAP | 1 |
| 415B | 9120350 | 10-24 HEX NUT WITH NY-LOK INSERT - PACK OF 10 | 1 |
| 415C | 9120450 | 10-24 X 1 ROUND HEAD PHILLIPS MACHINE SCREW - PACK OF 10 | 1 |
| 415D | 6490191 | BUMPER / BRUSH | 1 |
| 416 | 9120815 | 3/16 SQUARE X 1/2 LONG KEY - STEEL - PACK OF 1 | 1 |
| 417 | 6492568 | PAD DRIVER - 20" ASSEMBLED & BALANCED | 1 |
| 418 | 9121985 | 13/32 I.D. X 1 O.D. X .12 THICK FLAT WASHER (11 GAGE) - PACK OF 1 | 1 |
| 419 | 9121520 | 5/16 SPLIT LOCK WASHER - PACK OF 10 | 1 |
| 420 | 9121490 | 5/16-24 X 7/8 HEX BOLT - PACK OF 2 | 1 |
| 421 | 5990731 | SPRING CLIP PAD HOLDER SET - INCLUDES: | 1 |
| 421A | 9120140 | #6 X 5/8 PAN HEAD PHILLIPS SHEET METAL SCREW - PACK OF 10 | 3 |
| 422 | 6492001 | 20" LUST LITE BURNISH PAD - CASE (5) | 1 |
| 423 | 9120980 | 1/4-20 X 1 SOCKET HEAD CAP SCREW - PACK OF 5 | 3 |
| 424 | 9120880 | 1/4 SPLIT LOCK WASHER - PACK OF 10 | 3 |
| 425 | 9120950 | 1/4 X 1 1/4 FENDER WASHER - PACK OF 10 | 3 |
| 426 | 5796101 | PAPER BAG - 5 PACK | 1 |
| | 6592801 | VAC TRAC COLLECTION BAG - OPTIONAL | 1 |
| 427 | 9122020 | 3/8 DIAMETER X 3/8 LONG SOCKET HEAD SHOULDER BOLT (5/16-18)-PK-1 (QTY. 6 ON DB MODEL) | 2 |
| 428 | 9121400 | 3/8 ID X 7/8 OD X .064/.104 THK WROUGHT WASHER-PK-10-AB MODEL ONLY | 2 |
| 429 | 9121430 | 5/16-18 THIN HEX NUT WITH NY-LOK INSERT-PK-5 (QTY. 6 ON DB MODEL) | 2 |

SHIELD AND PAD DRIVER



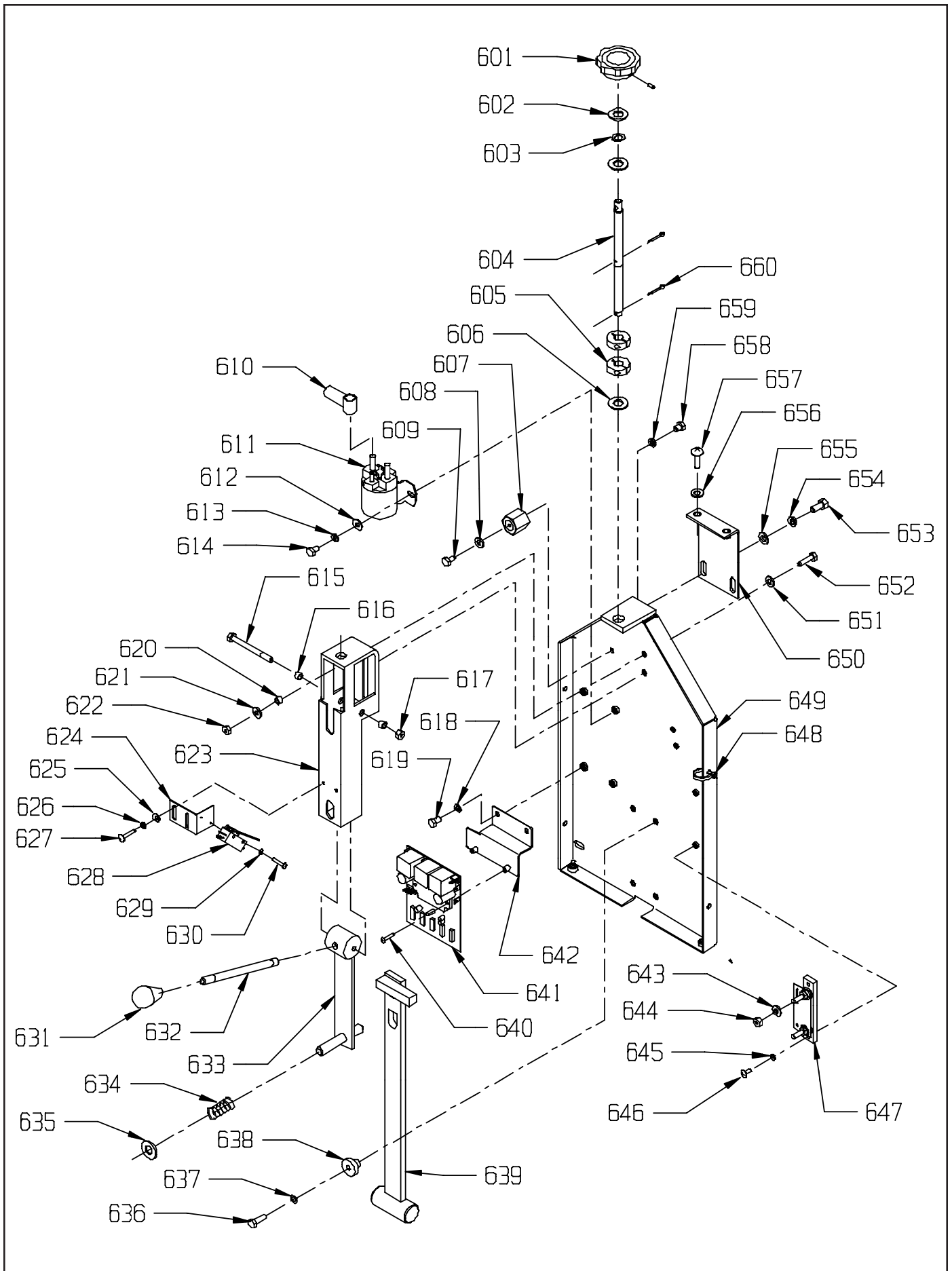
| ITEM | PART NO. | DESCRIPTION | QTY. |
|-------------|-----------------|---|-------------|
| 501 | 4490521 | LOAD ADJUST KNOB (INCLUDES SET SCREW) | 1 |
| 502 | 9122450 | 17/32 I.D. X 1 1/16 O.D. X .074/.121 THICK SAE FLAT WASHER (1/2) - PK-5 | 2 |
| 503 | 9122705 | 1/2 I.D. X 3/4 O.D. X .01 THICK 1 WAVE SPRING WASHER (1/2) - PACK OF 5 | 1 |
| 504 | 6490611 | ADJUSTMENT ROD | 1 |
| 505 | 6490621 | ADJUSTMENT ROD COLLAR | 2 |
| 506 | 9122180 | 13/32 I.D. X 13/16 O.D. X .051/.080 THICK SAE FLAT WASHER (3/8) - PK-10 | 1 |
| 507 | 4490561 | INSULATED STANDOFF | 1 |
| 508 | 9120970 | 1/4 EXTERNAL STAR LOCK WASHER - PACK OF 10 | 1 |
| 509 | 9121210 | 1/4-20 X 5/8 HEX BOLT - PACK OF 10 | 1 |
| 510 | 7692421 | TERMINAL BOOT | 1 |
| 511 | 4491011 | SOLENOID, 36 VOLT | 1 |
| 512 | 9120930 | 9/32 I.D. X 5/8 O.D. X .051/.080 THICK SAE FLAT WASHER (1/4) - PACK OF 10 | 2 |
| 513 | 9120880 | 1/4 SPLIT LOCK WASHER - PACK OF 10 | 2 |
| 514 | 9121170 | 1/4-20 X 1/2 HEX BOLT - PACK OF 10 | 2 |
| 515 | 2791281 | BUSHING SPACER | 2 |
| 516 | 9121287 | 1/4-20 X 2 1/2 HEX BOLT - STEEL - PACK OF 2 | 1 |
| 517 | 2791281 | BUSHING SPACER | 2 |
| 518 | 9120930 | 9/32 I.D. X 5/8 O.D. X .051/.080 THICK SAE FLAT WASHER (1/4) - PACK OF 10 | 2 |
| 519 | 9120900 | 1/4-20 HEX NUT WITH NY-LOK INSERT - PACK OF 10 | 2 |
| 520 | 6490601 | ADJUSTMENT BRACKET | 1 |
| 521 | 4495326 | SWITCH BRACKET | 1 |
| 522 | 9120370 | 7/32 I.D. X 1/2 O.D. X .032/.065 THICK SAE FLAT WASHER (10) - PACK OF 10 | 2 |
| 523 | 9120320 | 10 SPLIT LOCK WASHER - PACK OF 10 | 2 |
| 524 | 9120460 | 10-24 X 1 1/4 ROUND HEAD PHILLIPS MACHINE SCREW - PACK OF 10 | 2 |
| 525 | 4491071 | SNAP SWITCH | 1 |
| 526 | 9120130 | 6 EXTERNAL STAR LOCK WASHER - PACK OF 10 | 2 |
| 527 | 9120090 | 6-32 X 7/8 PAN HEAD PHILLIPS MACHINE SCREW - PACK OF 10 | 2 |
| 528 | 9120900 | 1/4-20 HEX NUT WITH NY-LOK INSERT - PACK OF 10 | 2 |
| 529 | 4490601 | KNOB, RAISE / LOWER ROD | 1 |
| 530 | 6490101 | LATCH HANDLE | 1 |
| 531 | 6490091 | LATCH ASSEMBLY | 1 |
| 532 | 4490631 | COMPRESSION SPRING | 1 |
| 533 | 9122450 | 17/32 I.D. X 1 1/16 O.D. X .074/.121 THICK SAE FLAT WASHER (1/2) - PK-5 | 2 |
| 534 | 4495351 | SPACER GUIDE | 4 |
| 535 | 9120880 | 1/4 SPLIT LOCK WASHER - PACK OF 10 | 4 |
| 536 | 9121270 | 1/4-20 X 1 HEX BOLT - PACK OF 10 | 4 |
| 537 | 6490701 | CATCH ASSEMBLY | 1 |
| 538 | 9120920 | 1/4-20 HEX NUT - PACK OF 10 | 2 |
| 539 | 9120970 | 1/4 EXTERNAL STAR LOCK WASHER - PACK OF 10 | 2 |
| 540 | 9120410 | 10-24 X 1/2 ROUND HEAD PHILLIPS MACHINE SCREW - PACK OF 10 | 2 |
| 541 | 9120320 | 10 SPLIT LOCK WASHER - PACK OF 10 | 2 |
| 542 | 4491031 | SHUNT | 1 |
| 543 | 9123005 | 1/8 X 5 1/2 WIRE TIE - PACK OF 5 | 4 |
| 544 | 6495511 | CONTROL FRAME WELDMENT | 1 |
| 545 | 9120970 | 1/4 EXTERNAL STAR LOCK WASHER - PACK OF 10 | 2 |
| 546 | 9121270 | 1/4-20 X 1 HEX BOLT - PACK OF 10 | 2 |
| 547 | 4492801 | TOP SUPPORT BRACKET | 1 |
| 548 | 9121640 | 5/16-18 X 3/4 HEX BOLT - PACK OF 5 | 2 |
| 549 | 9121520 | 5/16 SPLIT LOCK WASHER - PACK OF 10 | 2 |
| 550 | 9121390 | 11/32 I.D. X 11/16 O.D. X .051/.080 THICK SAE FLAT WASHER (5/16) - PK-10 | 2 |
| 551 | 9121400 | 3/8 I.D. X 7/8 O.D. X .064/.104 THICK WROUGHT WASHER (5/16) - PK OF 10 | 2 |
| 552 | 9121480 | 5/16-18 X 1 ROUND HEAD PHILLIPS MACHINE SCREW - PACK OF 2 | 2 |
| 553 | 9121160 | 1/4-20 X 3/8 HEX BOLT - PACK OF 10 | 1 |
| 554 | 9120880 | 1/4 SPLIT LOCK WASHER - PACK OF 10 | 4 |
| 555 | 9120310 | 1/8 X 3/4 COTTER PIN - PACK OF 10 | 2 |

CONTROL FRAME - AB



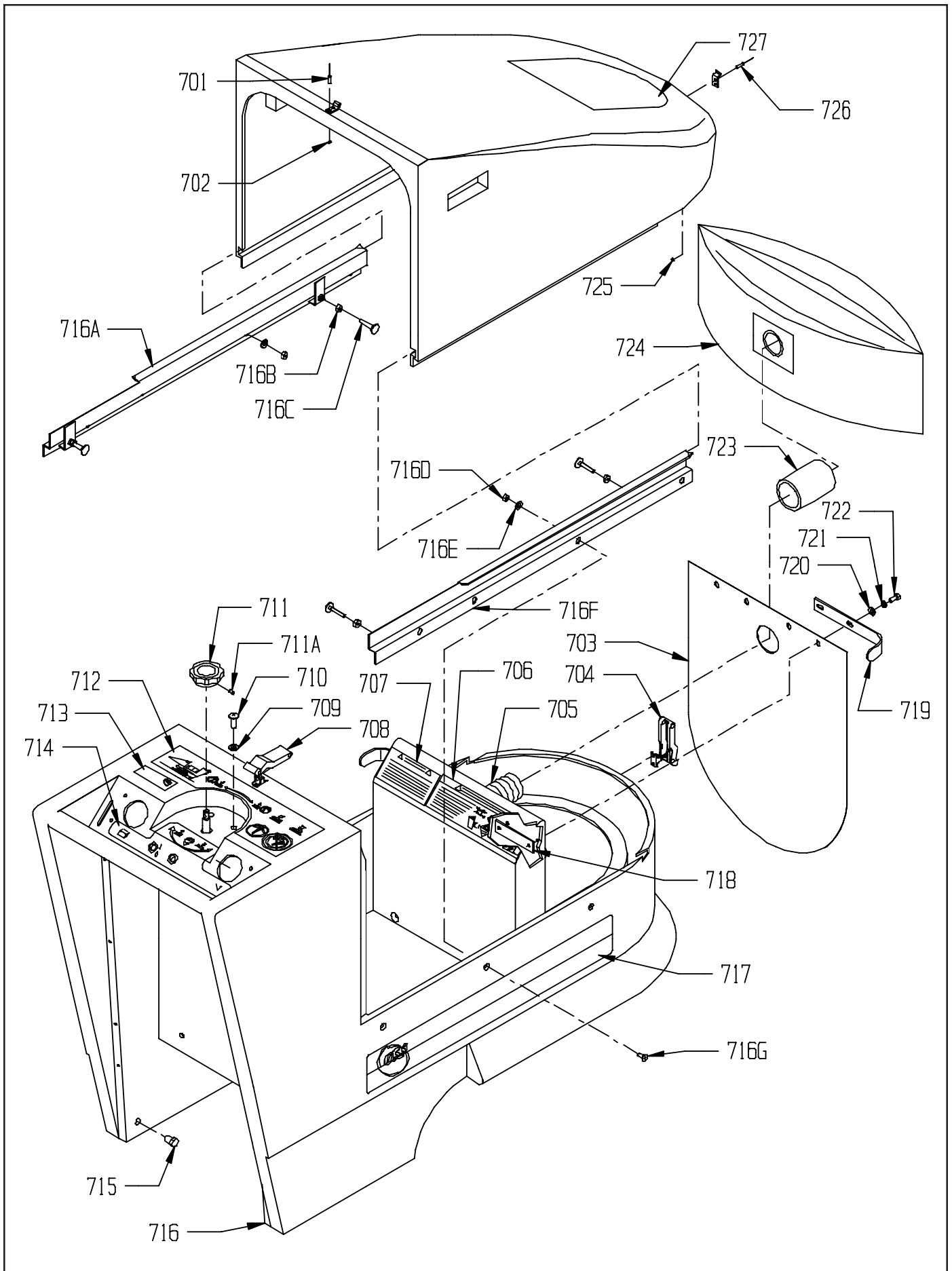
| ITEM | PART NO. | DESCRIPTION | QTY. |
|-------------|-----------------|---|-------------|
| 601 | 4490521 | LOAD ADJUST KNOB (INCLUDES SET SCREW) | 1 |
| 602 | 9122450 | 17/32 I.D. X 1 1/16 O.D. X .074/.121 THICK SAE FLAT WASHER (1/2) - PK-5 | 2 |
| 603 | 9122705 | 1/2 I.D. X 3/4 O.D. X .01 THICK 1 WAVE SPRING WASHER (1/2) - PK OF 2 | 1 |
| 604 | 6490611 | ADJUSTMENT ROD | 1 |
| 605 | 6490621 | ADJUSTMENT ROD COLLAR | 2 |
| 606 | 9122180 | 13/32 ID X 13/16 OD X .051/.080 THK WROUGHT WASHER (3/8)-PK-10 | 1 |
| 607 | 4490561 | INSULATED STANDOFF | 1 |
| 608 | 9120970 | 1/4 EXTERNAL STAR LOCK WASHER - PACK OF 10 | 1 |
| 609 | 9121250 | 1/4-20 X 3/4 HEX BOLT - PACK OF 10 | 1 |
| 610 | 7692421 | TERMINAL BOOT | 1 |
| 611 | 4491011 | SOLENOID, 36 VOLT | 1 |
| 612 | 9120930 | 9/32 I.D. X 5/8 O.D. X .051/.080 THICK SAE FLAT WASHER (1/4) - PACK OF 10 | 2 |
| 613 | 9120880 | 1/4 SPLIT LOCK WASHER - PACK OF 10 | 2 |
| 614 | 9121170 | 1/4-20 X 1/2 HEX BOLT - PACK OF 10 | 2 |
| 615 | 9121287 | 1/4-20 X 2 1/2 HEX HEAD BOLT - STEEL - PACK OF 2 | 1 |
| 616 | 2791281 | BUSHING SPACER | 2 |
| 617 | 9120900 | 1/4-20 HEX NUT WITH NY-LOK INSERT - PACK OF 10 | 1 |
| 618 | 9120880 | 1/4 SPLIT LOCK WASHER - PACK OF 10 | 2 |
| 619 | 9121170 | 1/4-20 X 1/2 HEX BOLT - PACK OF 10 | 2 |
| 620 | 2791281 | BUSHING SPACER | 2 |
| 621 | 9120930 | 9/32 I.D. X 5/8 O.D. X .051/.080 THICK SAE FLAT WASHER (1/4) - PACK OF 10 | 2 |
| 622 | 9120900 | 1/4-20 HEX NUT WITH NY-LOK INSERT - PACK OF 10 | 2 |
| 623 | 6490601 | ADJUSTMENT BRACKET WELDMENT | 1 |
| 624 | 4495326 | SWITCH BRACKET | 1 |
| 625 | 9120370 | 7/32 I.D. X 1/2 O.D. X .032/.065 THICK SAE FLAT WASHER (#10) - PK-10 | 2 |
| 626 | 9120320 | 10 SPLIT LOCK WASHER - PACK OF 10 | 2 |
| 627 | 9120460 | 10-24 X 1 1/4 ROUND HEAD PHILLIPS MACHINE SCREW - PACK OF 10 | 2 |
| 628 | 4491071 | SNAP SWITCH | 1 |
| 629 | 9120130 | 6 EXTERNAL STAR LOCK WASHER - PACK OF 10 | 2 |
| 630 | 9120090 | 6-32 X 7/8 PAN HEAD PHILLIPS MACHINE SCREW - PACK OF 10 | 2 |
| 631 | 4490601 | KNOB, RAISE / LOWER ROD | 1 |
| 632 | 6490101 | LATCH HANDLE | 1 |
| 633 | 6490091 | LATCH ASSEMBLY | 1 |
| 634 | 4490631 | COMPRESSION SPRING | 1 |
| 635 | 9122450 | 17/32 I.D. X 1 1/16 O.D. X .074/.121 THICK SAE FLAT WASHER (1/2) - PK-5 | 1 |
| 636 | 9121145 | 1/4-20 X 2 HEX BOLT - PACK OF 5 | 4 |
| 637 | 9120880 | 1/4 SPLIT LOCK WASHER - PACK OF 10 | 4 |
| 638 | 4495351 | SPACER GUIDE | 4 |
| 639 | 6490701 | CATCH ASSEMBLY | 1 |
| 640 | 9120260 | 8-32 X 3/4 ROUND HEAD PHILLIPS MACHINE SCREW - PACK OF 10 | 2 |
| 641 | 2690021 | SPEED CONTROL, CURTIS | 1 |
| 642 | 6492471 | SPEED CONTROL MOUNTING BRACKET | 1 |
| 643 | 9120970 | 1/4 EXTERNAL STAR LOCK WASHER - PACK OF 10 | 2 |
| 644 | 9120920 | 1/4-20 HEX NUT - PACK OF 10 | 2 |
| 645 | 9120320 | 10 SPLIT LOCK WASHER - PACK OF 10 | 2 |
| 646 | 9120410 | 10-24 X 1/2 ROUND HEAD PHILLIPS MACHINE SCREW - PACK OF 10 | 2 |
| 647 | 4491031 | SHUNT | 1 |
| 648 | 9123005 | 1/8 X 5 1/2 WIRE TIE - PACK OF 5 | 4 |
| 649 | 6495511 | CONTROL FRAME WELDMENT | 1 |
| 650 | 4492801 | TOP SUPPORT BRACKET | 1 |
| 651 | 9120970 | 1/4 EXTERNAL STAR LOCK WASHER - PACK OF 10 | 2 |
| 652 | 9121270 | 1/4-20 X 1 HEX BOLT - PACK OF 10 | 2 |
| 653 | 9121640 | 5/16-18 X 3/4 HEX BOLT - PACK OF 5 | 2 |
| 654 | 9121520 | 5/16 SPLIT LOCK WASHER - PACK OF 10 | 2 |
| 655 | 9121390 | 11/32 I.D. X 11/16 O.D. X .051/.080 THICK SAE FLAT WASHER (5/16) - PK-10 | 2 |
| 656 | 9121400 | 3/8 I.D. X 7/8 O.D. X .064/.104 THICK WROUGHT WASHER (5/16) - PK-10 | 2 |
| 657 | 9121480 | 5/16-18 X 1 ROUND HEAD PHILLIPS MACHINE SCREW - PACK OF 2 | 2 |
| 658 | 9121170 | 1/4-20 X 1/2 HEX BOLT - PACK OF 10 | 1 |
| 659 | 9120880 | 1/4 SPLIT LOCK WASHER - PACK OF 10 | 1 |
| 660 | 9120310 | 1/8 X 3/4 COTTER PIN - PACK OF 10 | 2 |

CONTROL FRAME - DB



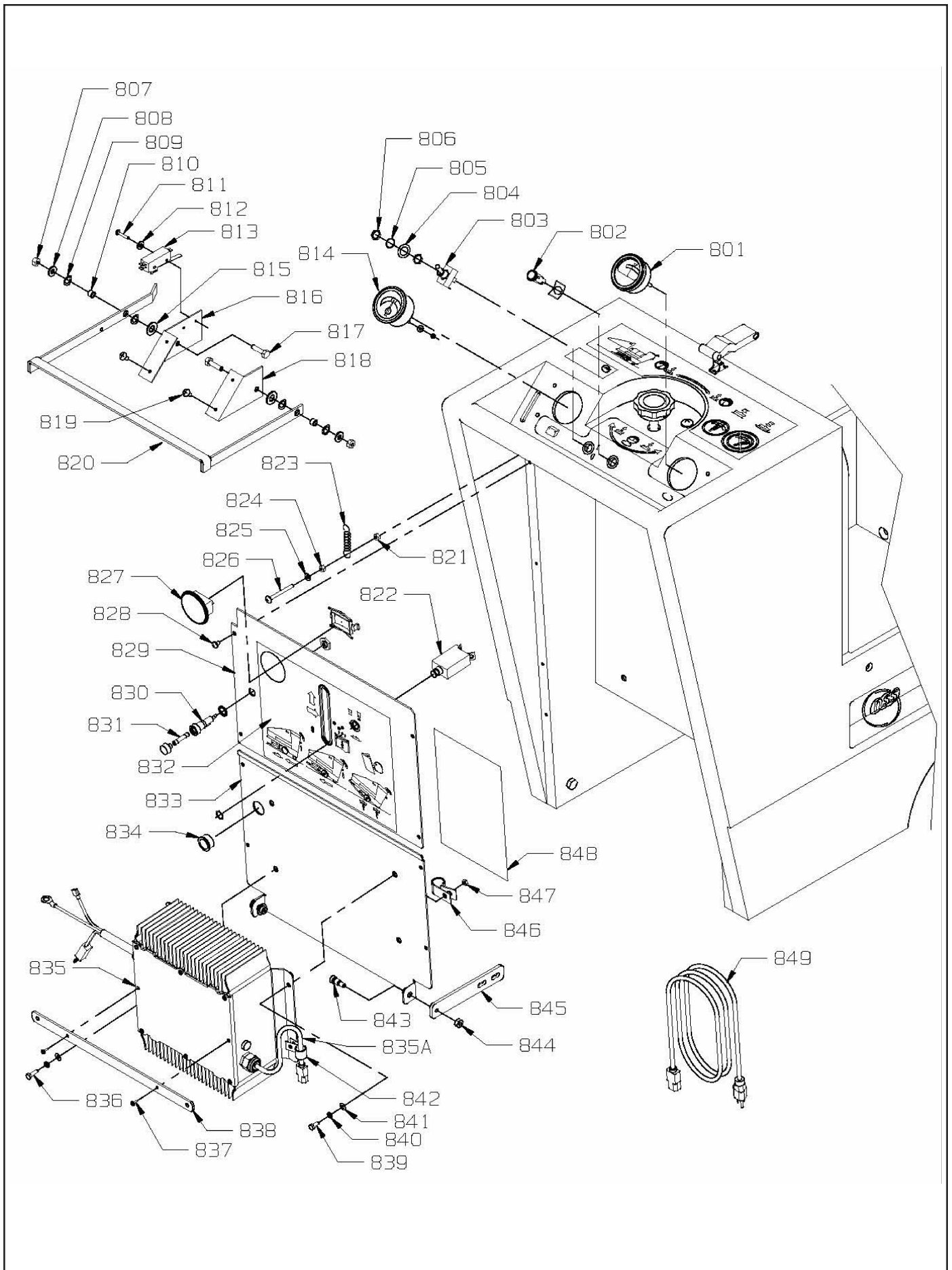
| <u>ITEM</u> | <u>PART NO.</u> | <u>DESCRIPTION</u> | <u>QTY.</u> |
|-------------|-----------------|--|-------------|
| 701 | 9120317 | 5/32 X 5/8 DOME HEAD POP RIVET - STEEL - PACK OF 5 | 4 |
| 702 | 9120185 | 5/32 I.D. X 1/2 O.D. WASHER - STEEL - ZINC PLATE - PACK OF 6 | 4 |
| 703 | 6492261 | RUBBER MOTOR COVER | 1 |
| 704 | 6491171 | SOFT DRAW LATCH WITH CONCEALED KEEPER | 1 |
| 705 | 3392561 | VAC EXHAUST HOSE | 1 |
| 706 | 6495851 | BATTERY WARNING DECAL - OBC | 1 |
| 707 | 6491171 | SOFT DRAW LATCH WITH CONCEALED KEEPER | 1 |
| 708 | 3393991 | OBC WARNING DECAL | 1 |
| 709 | 9121400 | 3/8 I.D. X 7/8 O.D. X .064/.104 THICK WROUGHT WASHER (5/16) - PK-10 | 2 |
| 710 | 9121480 | 5/16-18 X 1 ROUND HEAD PHILLIPS MACHINE SCREW - PACK OF 2 | 2 |
| 711 | 4490521 | LOAD ADJUST KNOB - INCLUDES: | 1 |
| 711A | 9120650 | 10-32 X 3/4 SET SCREW - PACK OF 5 | 1 |
| 712 | 6495791 | ENGLISH/SPANISH OPERATION DECAL | 1 |
| 713 | 6493081 | NAME IDENTIFIER DECAL CHARGER 2025 AB | 1 |
| 714 | 6492801 | DASH PANEL DECAL | 1 |
| 715 | 6490951 | 1/4 MPT PLUG | 2 |
| 716 | 6490011 | HOUSING WITH SLIDE RAILS | 1 |
| 716A | 6495441 | SLIDE RAIL, LEFT | 1 |
| 716B | 9120920 | 1/4-20 HEX NUT - PACK OF 10 | 4 |
| 716C | 9121039 | 1/4-20 X 1 1/2 ELEVATOR BOLT - ZINC PLATED - PACK OF 1 | 4 |
| 716D | 9120900 | 1/4-20 HEX NUT WITH NY-LOK INSERT - PACK OF 10 | 6 |
| 716E | 9120930 | 9/32 I.D. X 5/8 O.D. X .051/.080 THICK SAE FLAT WASHER (1/4) - PK-10 | 6 |
| 716F | 6495431 | SLIDE RAIL, RIGHT | 1 |
| 716G | 9121037 | 1/4-20 X 5/8 FLAT HEAD PHILLIPS HEAD MACHINE SCREW - PK-10 | 6 |
| 717 | 6493061 | SIDE DECAL - 3.5 X 26 | 2 |
| 718 | 6491211 | TAPPING PLATE | 2 |
| 719 | 6491191 | HOOD STOP / SUPPORT BRACKET | 2 |
| 720 | 9120930 | 9/32 I.D. X 5/8 O.D. X .051/.080 THICK SAE FLAT WASHER (1/4) - PK-10 | 4 |
| 721 | 9120880 | 1/4 SPLIT LOCK WASHER - PACK OF 10 | 4 |
| 722 | 9121270 | 1/4-20 X 1 HEX BOLT - PACK OF 10 | 4 |
| 723 | 4495531 | END CUFF - 2" | 1 |
| 724 | 5796101 | PAPER BAG - 5 PACK | 1 |
| | 6592801 | CLOTH FILTER BAG (OPTIONAL) | 1 |
| 725 | 9120185 | 5/32 I.D. X 1/2 O.D. WASHER - STEEL - ZINC PLATE - PACK OF 6 | 4 |
| 726 | 9120317 | 5/32 X 5/8 DOME HEAD POP RIVET - STEEL - PACK OF 5 | 4 |
| 727 | 6492871 | HOOD DECAL | 1 |

HOUSING - AB



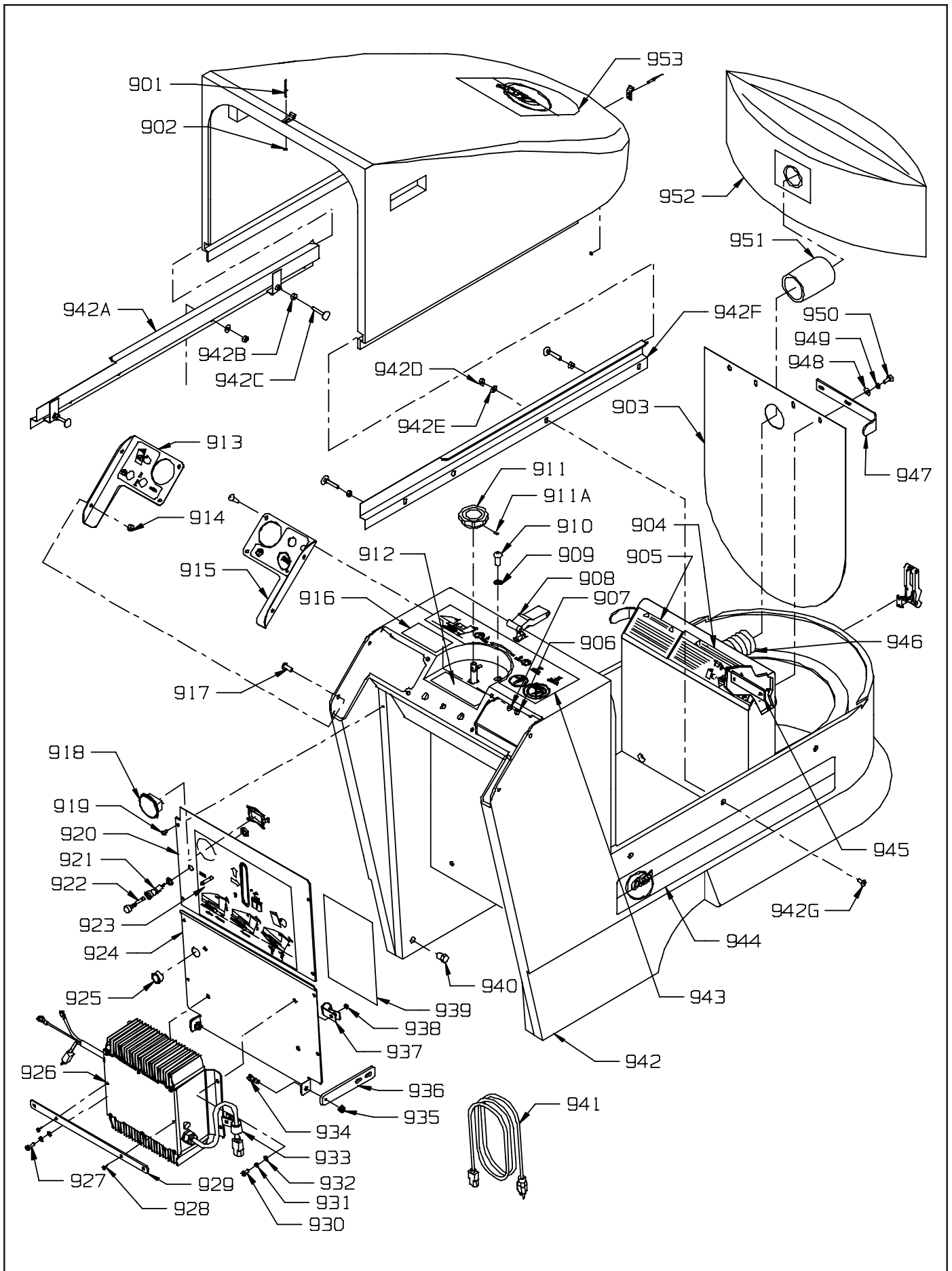
| ITEM | PART NO. | DESCRIPTION | QTY. |
|-------------|-----------------|--|-------------|
| 801 | 4491041 | RPM METER WITH HARDWARE | 1 |
| 802 | 2691981 | LIGHT - INDICATOR, GREEN, 36 VOLT, WITH CLIP | 1 |
| 803 | 4491101 | TOGGLE SWITCH, MOTOR | 1 |
| 804 | 9122465 | .516 I.D. X .813 O.D. X .027/.030 THICK FLAT WASHER - PACK OF 2 | 1 |
| 805 | 0691851 | 1/2 INTERNAL STAR LOCK WASHER | 1 |
| 806 | 0798821 | 5/8 HEX NUT | 1 |
| 807 | 9120900 | 1/4-20 HEX NUT WITH NY-LOK INSERT - PACK OF 10 | 2 |
| 808 | 9120930 | 9/32 I.D. X 5/8 O.D. X .051/.080 THICK SAE FLAT WASHER (1/4) - PK-10 | 2 |
| 809 | 9122120 | 3/8 I.D. X 5/8 O.D. X .031 THICK 1 WAVE SPRING WASHER (3/8) - PK-5 | 4 |
| 810 | 2791281 | BUSHING SPACER | 2 |
| 811 | 9120090 | 6-32 X 7/8 PAN HEAD PHILLIPS MACHINE SCREW - PACK OF 10 | 2 |
| 812 | 9120040 | 6 INTERNAL STAR LOCK WASHER - PACK OF 10 | 2 |
| 813 | 4491071 | SNAP SWITCH | 1 |
| 814 | 4491051 | BATTERY METER 36 VOLT | 1 |
| 815 | 9122180 | 13/32 I.D. X 13/16 O.D. X .051/.080 THICK - PK-10 SAE FLAT WASHER (3/8) | 2 |
| 816 | 4492881 | SWITCH PLATE - LEFT | 1 |
| 817 | 9121270 | 1/4-20 X 1 HEX BOLT - PACK OF 10 | 2 |
| 818 | 4492901 | SWITCH PLATE - RIGHT | 1 |
| 819 | 9120510 | 10-24 X 1/2 TRUSS HEAD PHILLIPS MACHINE SCREW - PACK OF 10 | 4 |
| 820 | 4493046 | HANDLE | 1 |
| 821 | 9120350 | 10-24 HEX NUT WITH NY-LOK INSERT - PACK OF 10 | 1 |
| 822 | 4490701 | CIRCUIT BREAKER - 70 AMP/ETA - MACHINES WITH 2 HP MOTOR | 1 |
| | 6491261 | CIRCUIT BREAKER - 90 AMP - MACHINES WITH 3 HP MOTOR | 1 |
| 823 | 4490641 | EXTENSION SPRING | 1 |
| 824 | 9120360 | 10-24 HEX NUT WITH STAR LOCK WASHER - PACK OF 10 | 1 |
| 825 | 9120370 | 7/32 I.D. X 1/2 O.D. X .032/.065 THICK SAE FLAT WASHER (10) - PACK OF 10 | 1 |
| 826 | 9120480 | 10-24 X 1 3/4 ROUND HEAD PHILLIPS MACHINE SCREW - PACK OF 5 | 1 |
| 827 | 2397361 | HOUR METER (OPTIONAL) | 1 |
| 828 | 9120790 | 10 X 5/8 PAN HEAD PHILLIPS SHEET METAL SCREW - PACK OF 10 | 8 |
| 829 | 6495813 | UPPER REAR PANEL | 1 |
| 830 | 4990321 | FUSE HOLDER W/NUT & WASHER | 1 |
| 831 | 6495741 | 3AG FAST-ACTING FUSE 4AMP | 1 |
| 832 | 6492891 | DECAL PAD POSITION | 1 |
| 833 | 6495823 | LOWER REAR PANEL | 1 |
| 834 | 4890451 | BUSHING, SNAP, #SB87511 HEYCO | 1 |
| 835 | 6495691 | 36 VOLT ONBOARD CHARGER 120/240 VOLT 21 AMP | 1 |
| 836 | 9121020 | 1/4-20 X 1 TRUSS HEAD PHILLIPS MACHINE SCREW - PACK OF 5 | 1 |
| 837 | 9120085 | M3.5 X 19 PAN HEAD PHILLIPS MACHINE SCREW - PACK OF 1 | 2 |
| 838 | 2491283 | CORD WRAP | 1 |
| 839 | 9121000 | 1/4-20 X 5/8 TRUSS HEAD PHILLIPS MACHINE SCREW - PACK OF 5 | 3 |
| 840 | 9120880 | 1/4 SPLIT LOCK WASHER - PACK OF 10 | 4 |
| 841 | 9120930 | 9/32 I.D. X 5/8 O.D. X .051/.080 THICK SAE FLAT WASHER (1/4) - PK-10 | 4 |
| 842 | 3291111 | CABLE CLAMP | 1 |
| 843 | 9121550 | 5/16 DIA. X 3/8 LONG SOCKET HEAD SHOULDER BOLT 1/4-20 - PACK OF 1 | 2 |
| 844 | 9120890 | 1/4-20 HEX NUT WITH NY-LOK INSERT - PACK OF 10 - THIN | 2 |
| 845 | 6495831 | HINGE PLATE | 2 |
| 846 | 4890851 | CABLE CLAMP, #COV-090 KMC | 1 |
| 847 | 9120900 | 1/4-20 HEX NUT WITH NY-LOK INSERT - PACK OF 10 | 1 |
| 848 | 6495861 | WIRING DECAL AB WITH ONBOARD CHARGER | 1 |
| 849 | 6495701 | 120 VOLT ONBOARD CHARGER CORD | 1 |
| | 6495711 | 240 VOLT ONBOARD CHARGER CORD | 1 |

CONTROL PANEL - AB



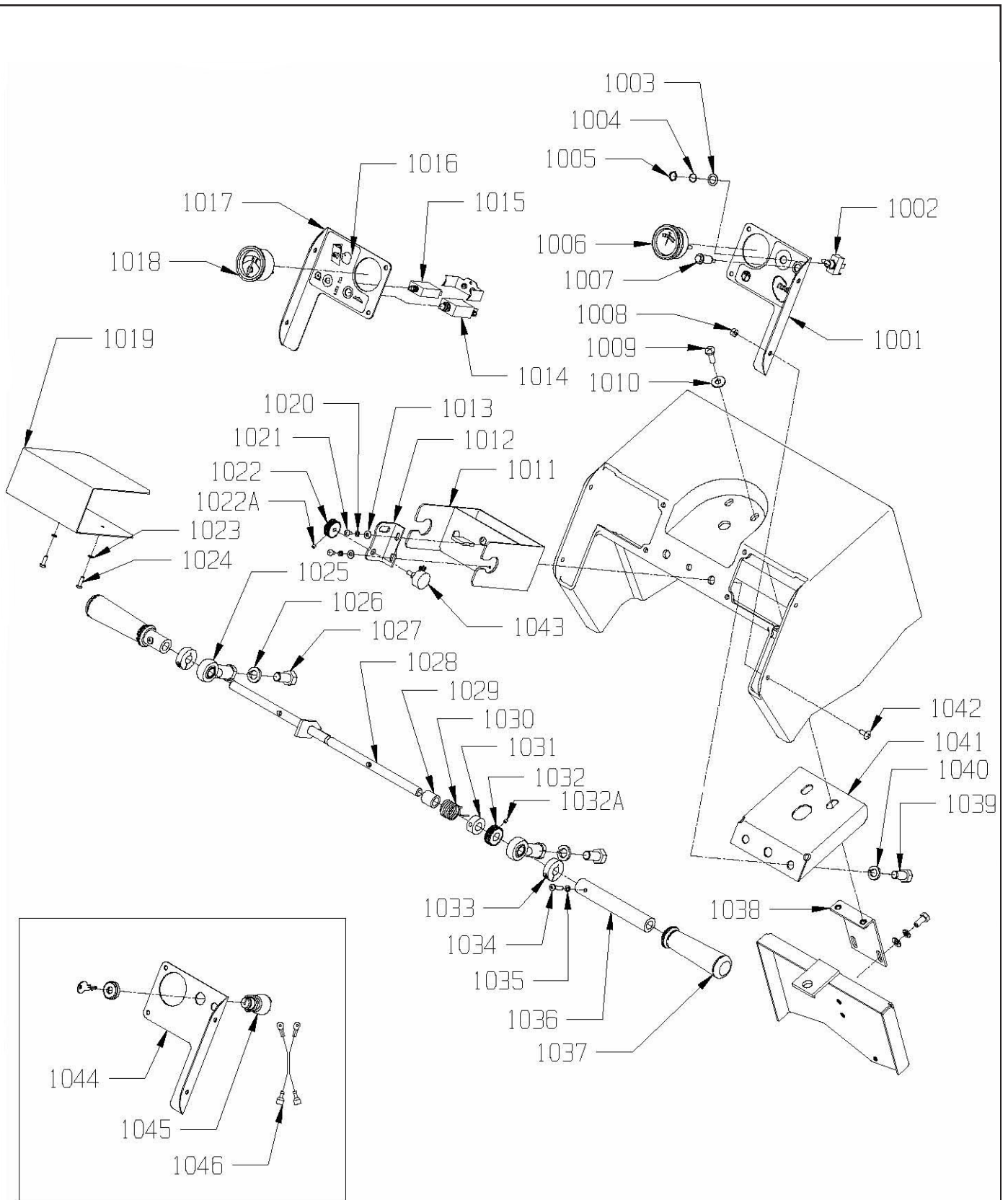
| ITEM | PART NO. | DESCRIPTION | QTY. |
|-------------|-----------------|---|-------------|
| 901 | 9120317 | 5/32 X 5/8 DOME HEAD POP RIVET - STEEL - PACK OF 5 | 8 |
| 902 | 9120185 | 5/32 I.D. X 1/2 O.D. WASHER - STEEL - ZINC PLATE - PACK OF 6 | 8 |
| 903 | 6492261 | RUBBER MOTOR COVER | 1 |
| 904 | 6495851 | BATTERY WARNING DECAL OBC | 1 |
| 905 | 3393991 | OBC WARNING DECAL | 1 |
| 906 | 9120900 | 1/4-20 HEX NUT WITH NY-LOK INSERT - PACK OF 10 | 4 |
| 907 | 9120930 | 9/32 I.D. X 5/8 O.D. X .051/.080 THICK SAE FLAT WASHER (1/4) - PACK OF 10 | 4 |
| 908 | 6491171 | SOFT DRAW LATCH WITH CONCEALED KEEPER | 2 |
| 909 | 9121400 | 3/8 I.D. X 7/8 O.D. X .064/.104 THICK WROUGHT WASHER (5/16) - PK-10 | 2 |
| 910 | 9121480 | 5/16-18 X 1 ROUND HEAD PHILLIPS MACHINE SCREW - PACK OF 2 | 2 |
| 911 | 4490521 | LOAD ADJUST KNOB (INCLUDES SET SCREW) | 1 |
| 912 | 6495191 | CONTROL PANEL DECAL KIT | 1 |
| 913 | 6495181 | CONTROL PANEL - LEFT | 1 |
| 914 | 9120900 | 1/4-20 HEX NUT WITH NY-LOK INSERT - PACK OF 10 | 4 |
| 915 | 6495171 | CONTROL PANEL - RIGHT | 1 |
| 916 | 6493091 | IDENTIFIER DECAL CHARGER 2025 DB | 1 |
| 917 | 9121000 | 1/4-20 X 5/8 TRUSS HEAD PHILLIPS MACHINE SCREW - PACK OF 5 | 4 |
| 918 | 2397361 | HOUR METER (OPTIONAL) | 1 |
| 919 | 9120790 | 10 X 5/8 PAN HEAD PHILLIPS SHEET METAL SCREW - PACK OF 10 | 8 |
| 920 | 6495813 | UPPER REAR PANEL | 1 |
| 921 | 4990321 | FUSE HOLDER WITH NUT AND WASHER | 1 |
| 922 | 6495741 | 3AG FAST-ACTING FUSE 4AMP | 1 |
| 923 | 6495201 | REAR PANEL DECAL | 1 |
| 924 | 6495823 | LOWER REAR PANEL | 1 |
| 925 | 4890451 | BUSHING, SNAP, #SB87511 HEYCO | 1 |
| 926 | 6495691 | 36 VOLT ONBOARD CHARGER 120/240 VOLT 21AMP | 1 |
| 927 | 9121020 | 1/4-20 X 1 TRUSS HEAD PHILLIPS MACHINE SCREW - PACK OF 5 | 1 |
| 928 | 9120085 | M3.5 X 19 PAN HEAD PHILLIPS MACHINE SCREW - PACK OF 1 | 2 |
| 929 | 2491283 | CORD WRAP | 1 |
| 930 | 9121000 | 1/4-20 X 5/8 TRUSS HEAD PHILLIPS MACHINE SCREW - PACK OF 5 | 3 |
| 931 | 9120880 | 1/4 SPLIT LOCK WASHER - PACK OF 10 | 4 |
| 932 | 9120930 | 9/32 I.D. X 5/8 O.D. X .051/.080 THICK FLAT WASHER (1/4) - PACK OF 10 | 4 |
| 933 | 3291111 | CABLE CLAMP | 1 |
| 934 | 9121550 | 5/16 DIA. X 3/8 LONG SOCKET HEAD SHOULDER BOLT 1/4-20 - PACK OF 1 | 2 |
| 935 | 9120890 | 1/4-20 HEX NUT WITH NY-LOK INSERT - PACK OF 10 - THIN | 2 |
| 936 | 6495831 | HINGE PLATE | 2 |
| 937 | 4890851 | CABLE CLAMP, #COV-090 KMC | 1 |
| 938 | 9120910 | 1/4-20 HEX NUT WITH STAR LOCK WASHER - PACK OF 10 | 1 |
| 939 | 6495751 | WIRING DECAL - DB WITH ONBOARD CHARGER | 1 |
| 940 | 6490951 | 1/4 MPT PLUG | 2 |
| 941 | 6495701 | 120 VOLT ONBOARD CHARGER CORD | 1 |
| 942 | 6495081 | HOUSING WITH SLIDE RAILS - INCLUDES: | 1 |
| 942A | 6495441 | SLIDE RAIL, LEFT | 1 |
| 942B | 9120920 | 1/4-20 HEX NUT - PACK OF 10 | 4 |
| 942C | 9121039 | 1/4-20 X 1 1/2 ELEVATOR BOLT - ZINC PLATED - PACK OF 1 | 4 |
| 942D | 9120900 | 1/4-20 HEX NUT WITH NY-LOK INSERT - PACK OF 10 | 6 |
| 942E | 9120930 | 9/32 I.D. X 5/8 O.D. X .051/.080 THICK (1/4) SAE FLAT WASHER-PK-10 | 6 |
| 942F | 9121362 | 1/4-20 X 2 1/2 FULL THREADED STUD - PACK OF 1 | 2 |
| 942G | 9120923 | 1/4-20 X 7/8 LONG HEX COUPLING NUT - PACK OF 1 | 2 |
| 942H | 6495431 | SLIDE RAIL, RIGHT | 1 |
| 942I | 9121037 | 1/4-20 X 5/8 FLAT HEAD PHILLIPS MACHINE SCREW - PACK OF 10 | 6 |
| 943 | 6495791 | ENGLISH / SPANISH OPERATION DECAL | 1 |
| 944 | 6493061 | SIDE DECAL 3.5 X 26 | 2 |
| 945 | 6491211 | TAPPING PLATE | 2 |
| 946 | 3392561 | VAC EXHAUST HOSE | 1 |
| 947 | 6491191 | HOOD STOP / SUPPORT BRACKET | 2 |
| 948 | 9120930 | 9/32 I.D. X 5/8 O.D. X .051/.080 THICK (1/4) SAE FLAT WASHER - PACK OF 10 | 4 |
| 949 | 9120880 | 1/4 SPLIT LOCK WASHER - PACK OF 10 | 4 |
| 950 | 9121270 | 1/4-20 X 1 HEX BOLT - PACK OF 10 | 4 |
| 951 | 4495531 | END CUFF - 2" | 1 |
| 952 | 5796101 | PAPER BAG - 5 PACK | 1 |
| | 6592801 | CLOTH FILTER BAG (OPTIONAL) | 1 |
| 953 | 6492871 | HOOD DECAL | 1 |

HOUSING - DB



| <u>ITEM</u> | <u>PART NO.</u> | <u>DESCRIPTION</u> | <u>QTY.</u> |
|-------------|-----------------|---|-------------|
| 1001 | 6495171 | CONTROL PANEL - RIGHT | 1 |
| 1002 | 4491101 | TOGGLE SWITCH, MOTOR | 1 |
| 1003 | 9122465 | .516 I.D. X .813 O.D. X .027/.030 THICK FLAT WASHER - PACK OF 2 | 1 |
| 1004 | 0691851 | 1/2 INTERNAL STAR LOCK WASHER | 1 |
| 1005 | 0798821 | 5/8" HEX NUT (LARGE NUT) | 1 |
| 1006 | 4491041 | RPM METER WITH HARDWARE | 1 |
| 1007 | 2691981 | LIGHT - INDICATOR, GREEN, 36 VOLT, WITH CLIP | 1 |
| 1008 | 9120900 | 1/4-20 HEX NUT WITH NY-LOK INSERT - PACK OF 10 | 8 |
| 1009 | 9121480 | 5/16-18 X 1 ROUND HEAD PHILLIPS MACHINE SCREW - PACK OF 2 | 2 |
| 1010 | 9121400 | 3/8 I.D. X 7/8 O.D. X .064/.104 THICK WROUGHT WASHER (5/16) -PK-10 | 2 |
| 1011 | 6496201 | BRACKET, HANDLE MOUNT | 1 |
| 1012 | 6495051 | POTENTIOMETER MOUNTING BRACKET | 1 |
| 1013 | 9120370 | 7/32 I.D. X 1/2 O.D. X .032/.065 THICK FLAT WASHER (#10) - PACK OF 10 | 2 |
| 1014 | 4490701 | CIRCUIT BREAKER - 70 AMP/ETA - MACHINES WITH 2 HP MOTOR | 1 |
| | 6491261 | CIRCUIT BREAKER - 90 AMP - MACHINES WITH 3 HP MOTOR | 1 |
| 1015 | 2392201 | CIRCUIT BREAKER, 10 AMP | 1 |
| 1016 | 6495191 | CONTROL PANEL DECAL KIT | 1 |
| 1017 | 6495181 | CONTROL PANEL - LEFT | 1 |
| 1018 | 4491051 | BATTERY METER WITH HARDWARE | 1 |
| 1019 | 6495033 | HANDLE BOX COVER | 1 |
| 1020 | 9120320 | 10 SPLIT LOCK WASHER - PACK OF 10 | 2 |
| 1021 | 9120410 | 10-24 X 1/2 ROUND HEAD PHILLIPS MACHINE SCREW - PACK OF 10 | 2 |
| 1022 | 2691941 | DRIVEN GEAR, POTENTIOMETER - INCLUDES: | 1 |
| 1022A | 9120170 | 8-32 X 3/16 SET SCREW - KNURL POINT - STEEL - PACK OF 5 | 2 |
| 1023 | 9120320 | #10 SPLIT LOCK WASHER - PACK OF 10 | 2 |
| 1024 | 9120410 | 10-24 X 1/2 ROUND HEAD PHILLIPS MACHINE SCREW - PACK OF 10 | 2 |
| 1025 | 2391941 | BALL JOINT | 2 |
| 1026 | 9122420 | 1/2 SPLIT LOCK WASHER - PACK OF 5 | 2 |
| 1027 | 9122530 | 1/2-13 X 1 HEX BOLT - PACK OF 1 | 2 |
| 1028 | 6496191 | HANDLE BAR | 1 |
| 1029 | 6496081 | BEARING PLAIN SLEEVE .5 X .75 X .75 LONG | 1 |
| 1030 | 6496091 | TORSION SPRING .81 I.D. X .067 WIRE DIAMETER | 1 |
| 1031 | 6496171 | COLLAR, 1/2" I.D. - INCLUDES SET SCREW | 1 |
| 1032 | 2691931 | DRIVE GEAR, HANDLE BAR - INCLUDES: | 1 |
| 1032A | 9120170 | 8-32 X 3/16 SET SCREW - KNURL POINT - STEEL - PACK OF 5 | 2 |
| 1033 | 3393891 | COLLAR, SHAFT 1/2" - INCLUDES CLAMPING SCREW | 2 |
| 1034 | 9120270 | 8-32 X 7/8 ROUND HEAD PHILLIPS MACHINE SCREW - PACK OF 10 | 2 |
| 1035 | 9120200 | #8 SPLIT LOCK WASHER - PACK OF 10 | 2 |
| 1036 | 2691871 | HANDLE GRIP BASE | 2 |
| 1037 | 3392901 | HANDLE GRIP | 2 |
| 1038 | 4492801 | TOP SUPPORT BRACKET | 1 |
| 1039 | 9122700 | 1/2-20 X 1 HEX BOLT - PACK OF 2 | 2 |
| 1040 | 9122420 | 1/2 SPLIT LOCK WASHER - PACK OF 5 | 2 |
| 1041 | 6495041 | HANDLE BOX MOUNTING PLATE | 1 |
| 1042 | 9121000 | 1/4-20 X 5/8 TRUSS HEAD PHILLIPS MACHINE SCREW - PACK OF 5 | 8 |
| 1043 | 2694131 | POTENTIOMETER, CURTIS SPEED CONTROL | 1 |
| 1044 | 6495161 | KEY SWITCH CONTROL PANEL - RIGHT | 1 |
| 1045 | 2795711 | KEY SWITCH & KEY | 1 |
| | 2796131 | REPLACEMENT KEY | 1 |
| 1046 | 6495571 | WIRE ASSEMBLY - KEY SWITCH ADAPTOR | 1 |

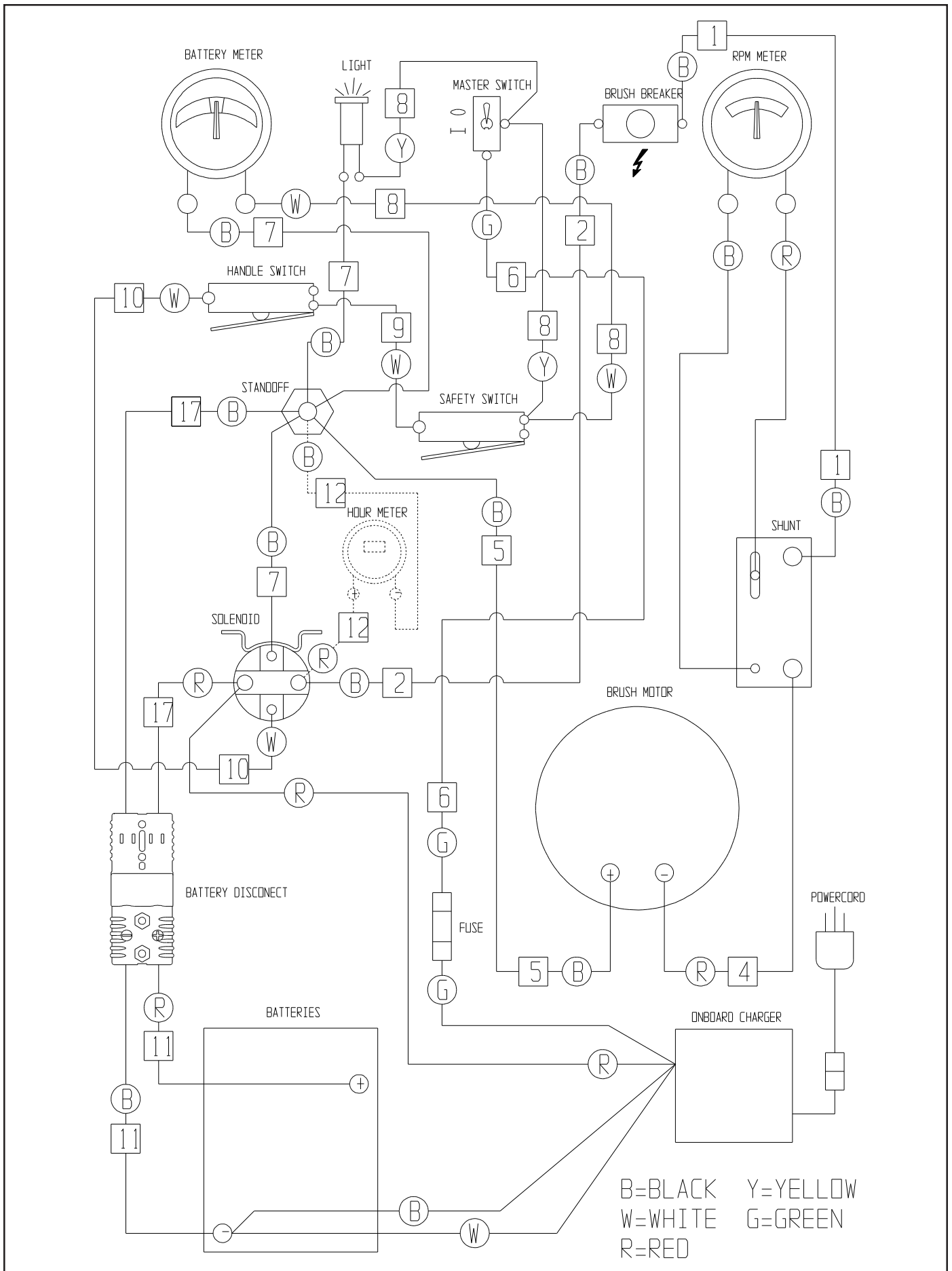
CONTROL PANEL - DB



OPTIONAL KEY SWITCH

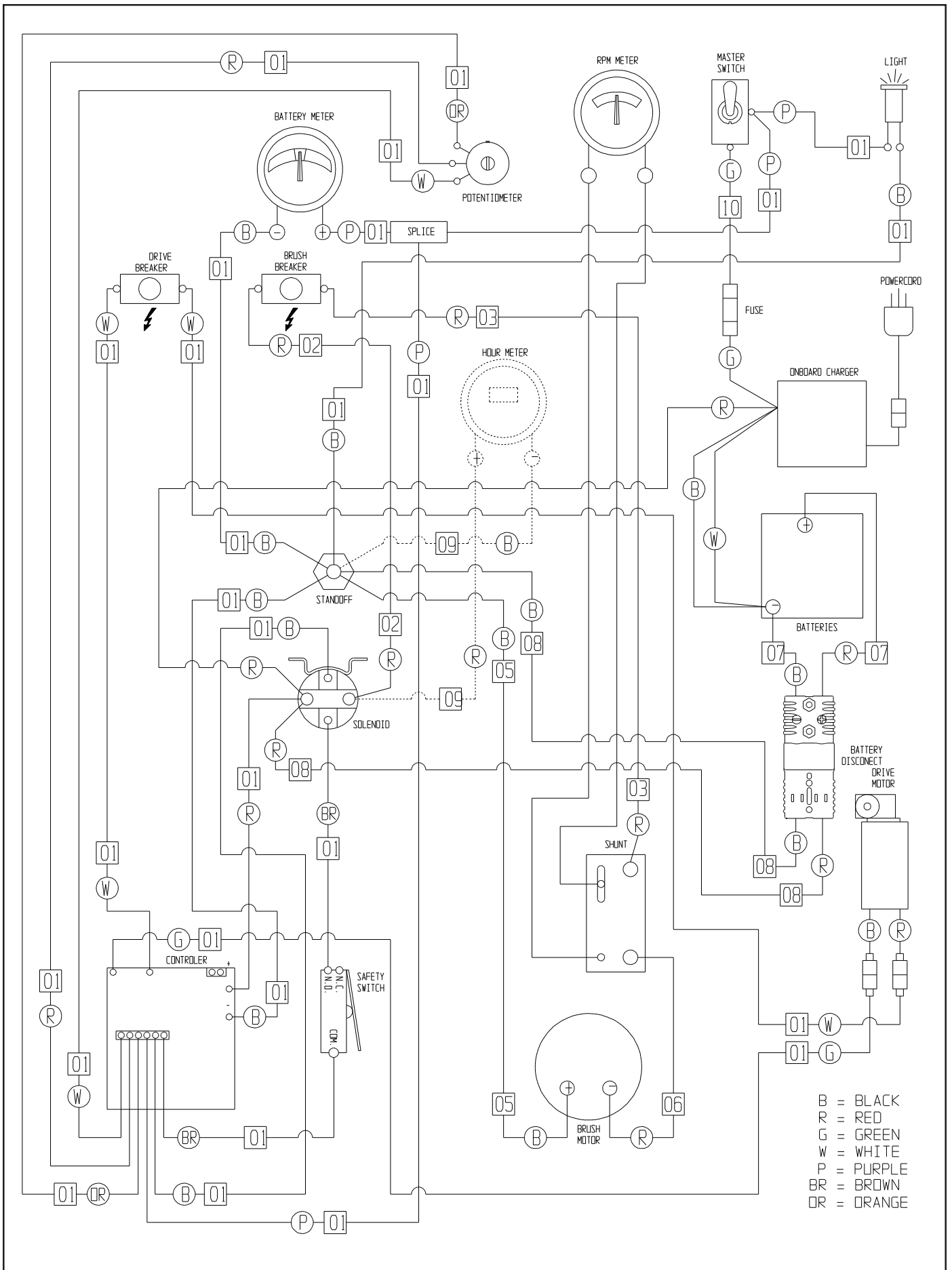
| <u>ITEM</u> | <u>PART NO.</u> | <u>DESCRIPTION</u> | <u>QTY.</u> |
|-------------|-----------------|--|-------------|
| 1 | 6490801 | WIRE ASSEMBLY, BREAKER TO SHUNT | 1 |
| 2 | 6490811 | WIRE ASSEMBLY, SOLENOID TO BREAKER | 1 |
| 4 | 6495121 | WIRE ASSEMBLY, SHUNT TO MOTOR | 1 |
| 5 | 6495131 | WIRE ASSEMBLY, MOTOR TO STANDOFF | 1 |
| 6 | 6495721 | WIRE ASSEMBLY, FUSE TO SWITCH | 1 |
| 7 | 6490861 | WIRE ASSEMBLY, SOLENOID / LIGHT / VOLT METER TO STANDOFF | 1 |
| 8 | 6490871 | WIRE ASSEMBLY, SAFETY SWITCH TO VOLT METER / SWITCH TO LIGHT | 1 |
| 9 | 6490881 | WIRE ASSEMBLY, HANDLE SWITCH TO SAFETY SWITCH | 1 |
| 10 | 6490891 | WIRE ASSEMBLY, SOLENOID TO HANDLE SWITCH | 1 |
| 11 | 7691661 | WIRE ASSEMBLY, ANDERSON - POS./NEG. BATTERY 36 VOLT | 1 |
| 17 | 6491831 | WIRE ASSEMBLY, ANDERSON TO SOLENOID / STANDOFF | 1 |
| 97 | 2391981 | BATTERY JUMPER 3/8" RING #97 | 2 |
| — | 2397361 | HOUR METER - OPTIONAL | 1 |
| — | 2691981 | INDICATOR LIGHT - GREEN LENS / 36 VOLT WITH CLIP | 1 |
| — | 4490561 | INSULATED STANDOFF | 1 |
| — | 4490701 | CIRCUIT BREAKER - 70 AMP/ETA - MACHINES WITH 2 HP MOTOR | 1 |
| — | 6491261 | CIRCUIT BREAKER - 90 AMP - MACHINES WITH 3 HP MOTOR | 1 |
| — | 4491011 | SOLENOID, 36 VOLT | 1 |
| — | 4491031 | SHUNT | 1 |
| — | 4491041 | RPM METER WITH HARDWARE | 1 |
| — | 4491051 | BATTERY METER 36 VOLT WITH HARDWARE | 1 |
| — | 4491061 | BATTERY, 185 AMP/HR, 12 VOLT | 3 |
| — | 4491071 | SNAP SWITCH | 2 |
| — | 4491101 | TOGGLE SWITCH, MOTOR | 1 |
| — | 4990321 | FUSE HOLDER WITH NUT & WASHER | 1 |
| — | 6491841 | 175 AMP ANDERSON WITH CONTACTS GRAY 36 VOLT | 2 |
| — | 6493521 | MOTOR, 36 VOLT – 2500 RPM - 2 HP | 1 |
| — | 6496231 | MOTOR, 36 VOLT – 2200 RPM - 3 HP | 1 |
| — | 6495621 | HOUR METER LEADS - OPTIONAL | 1 |
| — | 6495691 | 36V ONBOARD CHARGER 120/240V 21AMP | 1 |
| — | 6495701 | 120V ONBOARD CHARGER CORD | 1 |
| — | 6495711 | 240V ONBOARD CHARGER CORD - SHUKO | 1 |
| — | 6495741 | 3AG FAST-ACTING FUSE 4AMP | 1 |
| — | 9123005 | 1/8 X 5 1/2 WIRE TIE - PACK OF 5 | 6 |

WIRING DIAGRAM - AB



| <u>ITEM</u> | <u>PART NO.</u> | <u>DESCRIPTION</u> | <u>QTY.</u> |
|-------------|-----------------|---|-------------|
| 1 | 6495321 | WIRE HARNESS | 1 |
| 2 | 6495331 | WIRE ASSEMBLY, SOLENOID TO BRUSH BREAKER | 1 |
| 3 | 6495341 | WIRE ASSEMBLY, BRUSH BREAKER TO SHUNT | 1 |
| 5 | 6495131 | WIRE ASSEMBLY, MOTOR TO STANDOFF | 1 |
| 6 | 6495121 | WIRE ASSEMBLY, SHUNT TO MOTOR | 1 |
| 7 | 7691661 | WIRE ASSEMBLY, ANDERSON - POS./NEG. BATTERY 36 VOLT | 1 |
| 8 | 6491831 | WIRE ASSEMBLY, ANDERSON - SOLENOID / STANDOFF 36 VOLT | 1 |
| 10 | 6495721 | WIRE ASSEMBLY, FUSE TO SWITCH | 1 |
| 97 | 2391981 | BATTERY JUMPER 3/8" RING #97 | 2 |
| — | 2392201 | CIRCUIT BREAKER, 115 VOLT 10 AMP (DRIVE) | 1 |
| — | 2397361 | HOUR METER - OPTIONAL | 1 |
| — | 2690021 | SPEED CONTROL, CURTIS | 1 |
| — | 2691981 | INDICATOR LIGHT - GREEN LENS, 36 VOLT WITH CLIP | 1 |
| — | 2694131 | POTENTIOMETER, CURTIS CONTROL | 1 |
| — | 2795711 | KEY SWITCH & KEY - OPTIONAL | 1 |
| — | 4490561 | INSULATED STANDOFF | 1 |
| — | 4490701 | CIRCUIT BREAKER - 70 AMP/ETA (BRUSH) - MACHINES WITH 2 HP MOTOR | 1 |
| — | 6491261 | CIRCUIT BREAKER - 90 AMP - MACHINES WITH 3 HP MOTOR | 1 |
| — | 4491011 | SOLENOID, 36 VOLT | 1 |
| — | 4491031 | SHUNT | 1 |
| — | 4491041 | RPM METER WITH HARDWARE | 1 |
| — | 4491051 | BATTERY METER WITH HARDWARE | 1 |
| — | 4491061 | BATTERY, 205 AMP/HR, 12 VOLT | 3 |
| — | 4491071 | SNAP SWITCH (SAFETY) | 1 |
| — | 4491101 | TOGGLE SWITCH, MOTOR | 1 |
| — | 4990321 | FUSE HOLDER WITH NUT AND WASHER | 1 |
| — | 6491841 | 175 AMP ANDERSON WITH CONTACTS GRAY 36 VOLT | 2 |
| — | 6493521 | MOTOR 36 VOLT - 2500 RPM, 2.5 HP | 1 |
| — | 6496231 | MOTOR 36 VOLT - 2200 RPM, 3 HP | 1 |
| — | 6495291 | DRIVE MOTOR 36 VOLT | 1 |
| — | 6495571 | WIRE ASSEMBLY - KEY SWITCH ADAPTOR - OPTIONAL | 1 |
| — | 6495621 | HOUR METER LEADS - OPTIONAL | 1 |
| — | 6495691 | 36V ONBOARD CHARGER 120/240V 21AMP | 1 |
| — | 6495701 | 120V ONBOARD CHARGER CORD | 1 |
| — | 6495711 | 240V ONBOARD CHARGER CORD - SHUKO | 1 |
| — | 6495741 | 3AG FAST-ACTING FUSE 4AMP | 1 |
| — | 9123005 | 1/8 X 5 1/2 WIRE TIE - PACK OF 5 | |

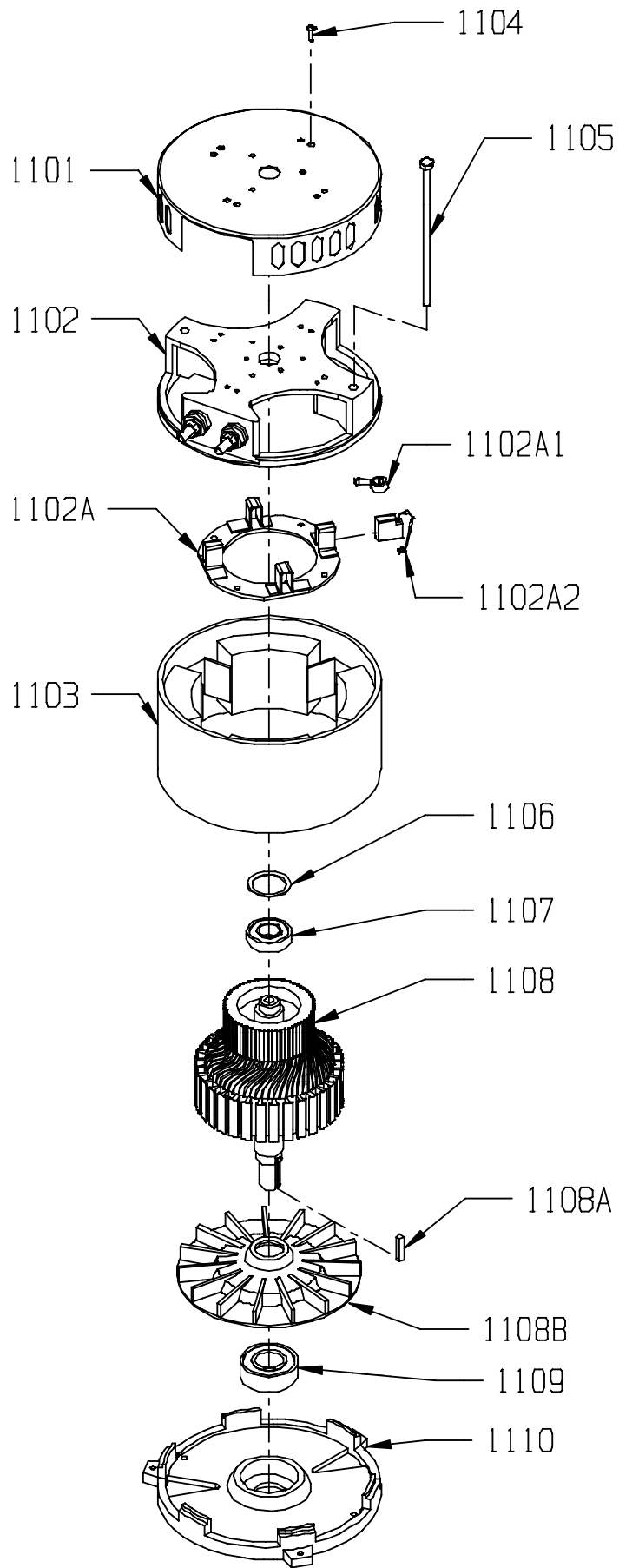
WIRING DIAGRAM - DB



MOTOR

| <u>ITEM</u> | <u>PART NO.</u> | <u>DESCRIPTION</u> | <u>QTY.</u> |
|-------------|-----------------------|--|-------------|
| | <u>6493521</u> | <u>MOTOR 2500 RPM, 36 VOLT - 2HP - INCLUDES:</u> | 1 |
| 1101 | 6496351 | COMMUTATOR BRACKET COVER | 1 |
| | 6496361 | COMMUTATOR BRACKET ASSEMBLY - INCLUDES: | 1 |
| 1102 | 6496371 | COMMUTATOR BRACKET | 1 |
| 1102A | 6493601 | BRUSH BOARD ASSEMBLY - INCLUDES: | 1 |
| 1102A1 | 6493591 | SPRING | 2 |
| 1102A2 | 7692041 | CARBON BRUSH | 2 |
| 1103 | 5991521 | STATOR FRAME ASSEMBLY - WITH CLIPS AND MAGNETS | 1 |
| 1104 | 9120600 | 10-24 X 1/2 PAN HEAD PHILLIPS THREAD CUTTING SCREW - PK-10 | 4 |
| 1105 | 5991701 | THRU BOLT | 2 |
| 1106 | 5991741 | HELICAL WASHER - LARGE | 1 |
| 1107 | 5991551 | BEARING - TOP END | 1 |
| 1108 | 6493611 | ARMATURE - 2500 RPM - INCLUDES: | 1 |
| 1108A | 9120827 | 3/16 SQUARE X 1 LONG KEY - STEEL - PACK OF 1 | 1 |
| 1108B | 6493571 | ALUMINUM FAN | 1 |
| 1109 | 5991541 | BEARING - BOTTOM END | 1 |
| 1110 | 6493551 | BEARING END BRACKET | 1 |
| | <u>6496231</u> | <u>MOTOR 2200 RPM, 36 VOLT - 3HP - INCLUDES:</u> | 1 |
| 1101 | 6496351 | COMMUTATOR BRACKET COVER | 1 |
| | 6496361 | COMMUTATOR BRACKET ASSEMBLY - INCLUDES: | 1 |
| 1102 | 6496371 | COMMUTATOR BRACKET | 1 |
| 1102A | 6493601 | BRUSH BOARD ASSEMBLY - INCLUDES: | 1 |
| 1102A1 | 6493591 | SPRING | 2 |
| 1102A2 | 7692041 | CARBON BRUSH | 2 |
| 1103 | 6496381 | STATOR FRAME ASSEMBLY - WITH CLIPS AND MAGNETS | 1 |
| 1104 | 9120600 | 10-24 X 1/2 PAN HEAD PHILLIPS THREAD CUTTING SCREW - PK-10 | 4 |
| 1105 | 6496391 | THRU BOLT | 2 |
| 1106 | 5991741 | HELICAL WASHER - LARGE | 1 |
| 1107 | 5991551 | BEARING - TOP END | 1 |
| 1108 | 6496401 | ARMATURE - 2500 RPM - INCLUDES: | 1 |
| 1108A | 9120827 | 3/16 SQUARE X 1 LONG KEY - STEEL - PACK OF 1 | 1 |
| 1108B | 6493571 | ALUMINUM FAN | 1 |
| 1109 | 5991541 | BEARING - BOTTOM END | 1 |
| 1110 | 6493551 | BEARING END BRACKET | 1 |

MOTOR





NSS® Enterprises, Inc.

3115 Frenchmens Road, Toledo, Ohio 43607
PHONE (419) 531-2121 FAX (419) 531-3761

NSS® Enterprises, Inc. European Distribution Centre

Unit II, Pinfold Trading Estate * 55 Nottingham Road
STAPLEFORD, NOTTINGHAM NG9 8AD ENGLAND U.K.
PHONE: (44) 0115 939 1568 * FAX: (44) 0115 949 0615