

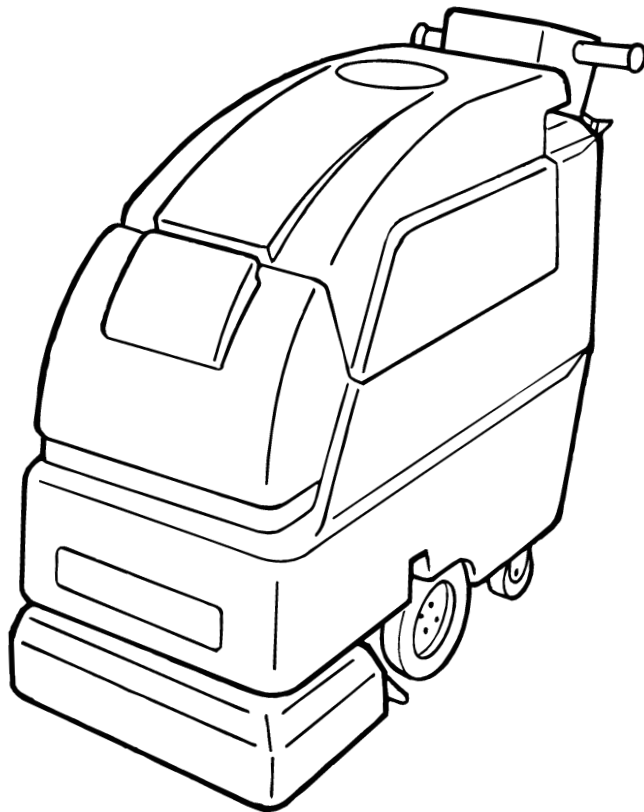


FalconTM Ultra B

Battery Automatic Carpet Extractor

Model No.:
608350
608351 - Pac

Operator and Parts Manual

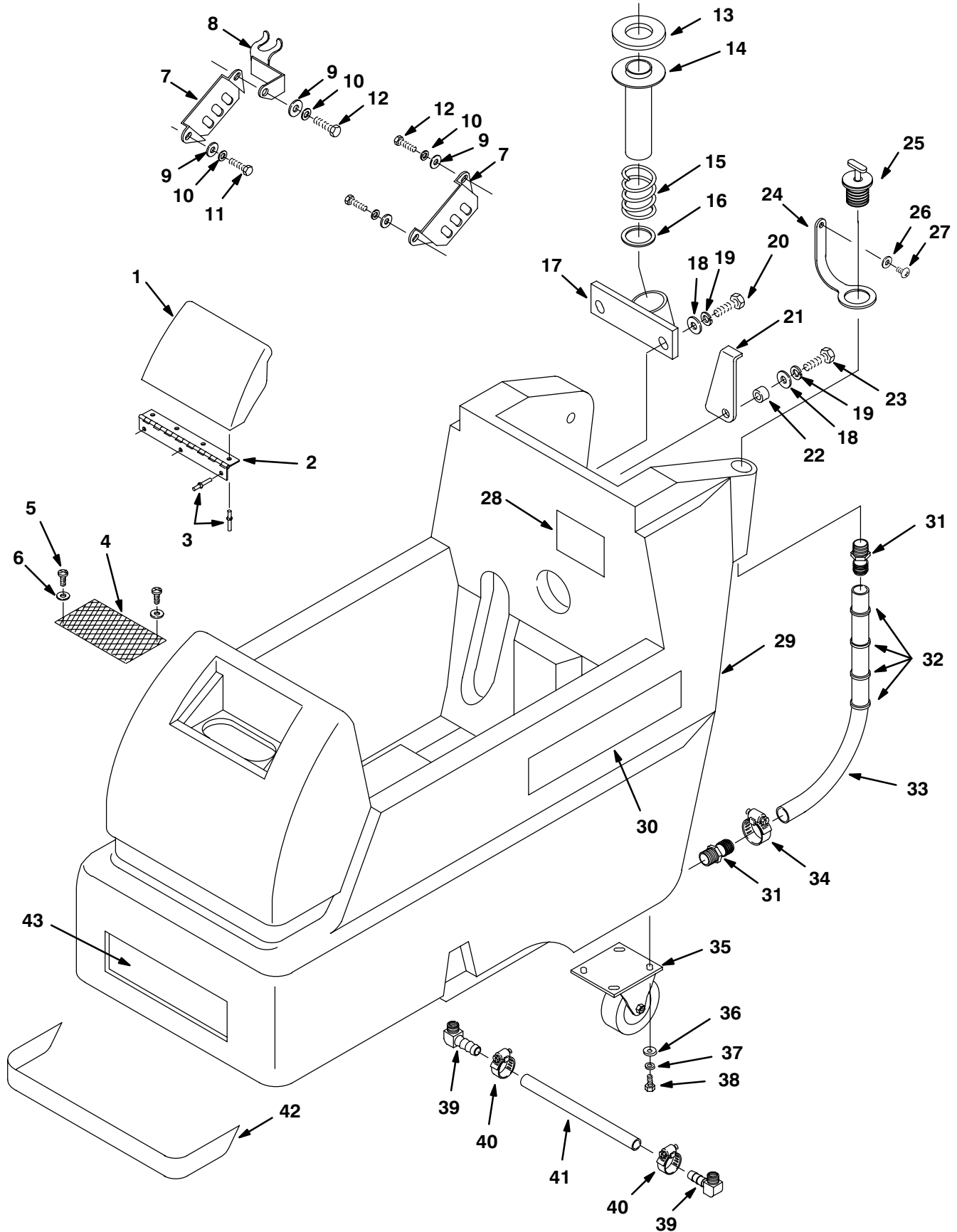


NOBLES
12875 RANSOM STREET
HOLLAND MI 49424 U.S.A.

CUSTOMER SERVICE: 1-800-365-6625
FAX: 1-800-678-4240

608418
Rev. 00 (09-99)

SOLUTION TANK GROUP



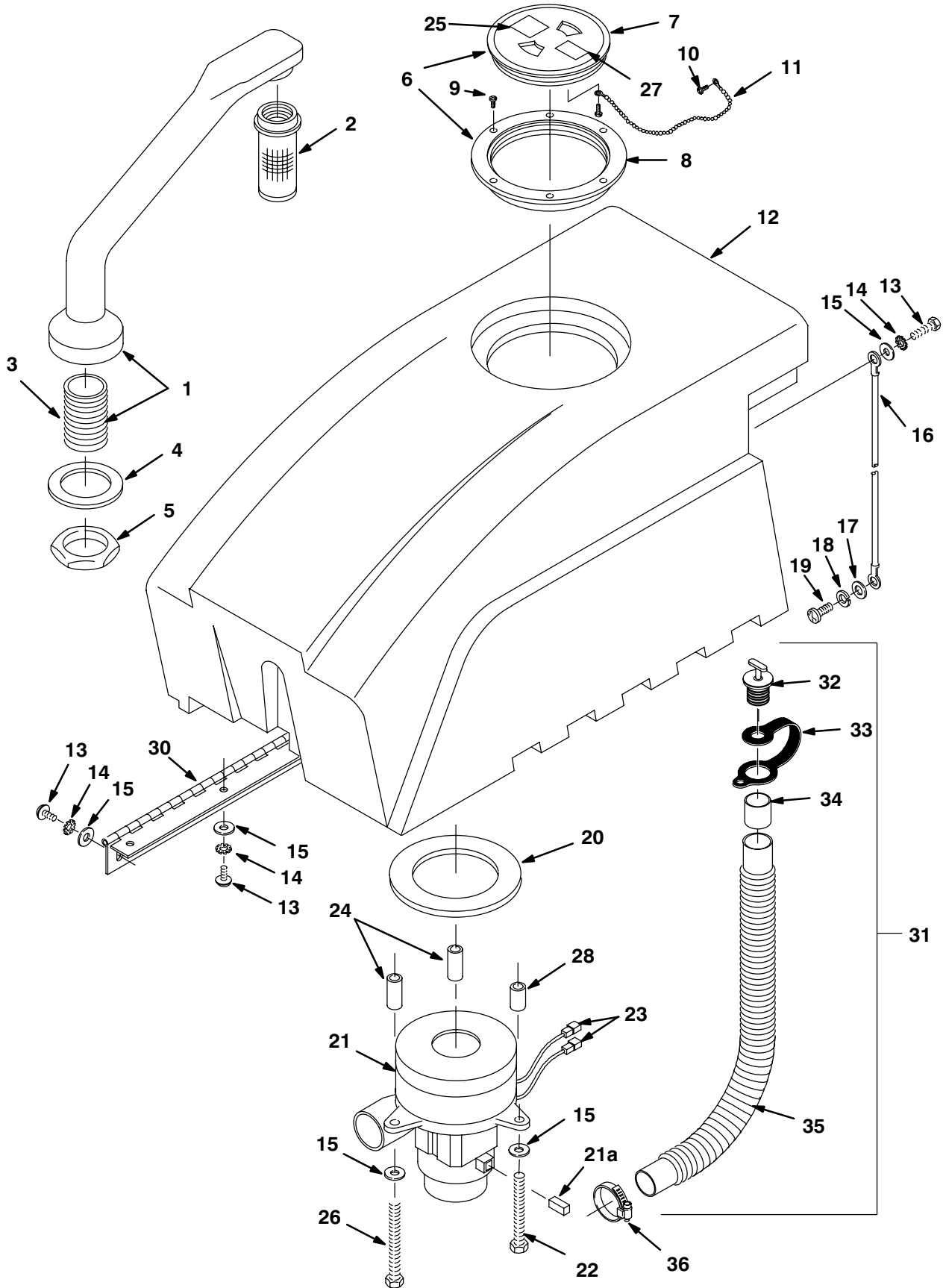
SOLUTION TANK GROUP

REF	PART #	DESCRIPTION	QTY.
1	608284	COVER, TANK, GREEN	1
2	230626	HINGE, COVER	1
3	140706	RIVET, POP	7
4	602529	SCREEN, FILL	1
5	140826	SCREW, #6X3/4	2
6	140032	WASHER, FLAT	2
7	230661	PLATE, LOCK CONTROL HOUSING	2
8	602641	WELDMENT, DRAIN HOSE	1
9	140027	WASHER, FLAT	4
10	140015	WASHER, LOCK	4
11	140275	SCREW, M8X1.25X16MM	4
12	200 031 488	SCREW, M08X20MM	4
13	100151	●GASKET, TUBE ADAPTER	1
14	230664	TUBE, ADAPTER	1
15	140424	SPRING, ADAPTER TUBE	1
16	602878	WASHER	1
17	602847	BRACKET, VAC TUBE	1
18	140027	WASHER, FLAT	2
19	140015	WASHER, LOCK	2
20	200 031 486	SCREW, M08X16MM	2
21	230925	SUPPORT, RECOVERY TANK	1
22	140116	BUSHING	1

REF	PART #	DESCRIPTION	QTY.
23	140275	SCREW, M8X1.25X16MM	1
24	600476	STRAP, PLUG	1
25	621324	●PLUG, EXPANSION	1
26	140011	WASHER, FLAT	1
27	140350	SCREW, #10X1/2	1
28	603233	DECAL, BATTERY DIAGRAM	1
29	608295	TANK, SOLUTION, GREEN	1
30	608417	DECAL, FALCON ULTRA B	2
31	150529	HOSE BARB	2
32	130040	WIRE TIE	4
33	607309	HOSE, 3/4" X 24"	1
34	630369	CLAMP, HOSE	1
35	630002	CASTER 4"	2
36	140036	WASHER, FLAT	8
37	140333	WASHER, LOCK	8
38	140276	SCREW, M10X1.5X16MM	8
39	150419	ELBOW, 1/4M X 3/8H 90°	2
40	140310	CLAMP	2
41	607310	HOSE, 3/8" X 17.5"	1
42	600730	DECAL, RECESS	1
43	608184	DECAL, "NOBLES"	1

● RECOMMENDED STOCK ITEMS

RECOVERY TANK GROUP



RECOVERY TANK GROUP

REF	PART #	DESCRIPTION	QTY.
1	701103	ASM.,STANDPIPE	1
2	180613	●FLOAT, SHUTOFF	1
3	606088	NIPPLE	1
4	101714	●GASKET	1
5	210240	NUT, FLANGED	1
∇6	100102	●ASM.,LID CLEAR W/STD HOLE	1
▲7	100105	●LID, CENTER CLEAR ONLY	1
▲8	100109	●LID, OUTER RING ONLY	1
9	140826	SCREW, #6X3/4	7
10	3701.6	SCREW, #6X3/8	1
11	230513	CHAIN	1
12	608297	TANK, RECOVERY, GREEN	1
13	578 187 000	SCREW, M06X12MM	1
14	140052	WASHER, LOCK	1
15	140000	WASHER, FLAT	1
16	140960	CABLE	1
17	140027	WASHER, FLAT	1
18	140015	WASHER, LOCK	1
19	200 031 488	SCREW, M08X20MM	1
20	100001	●GASKET, VAC MOTOR	1

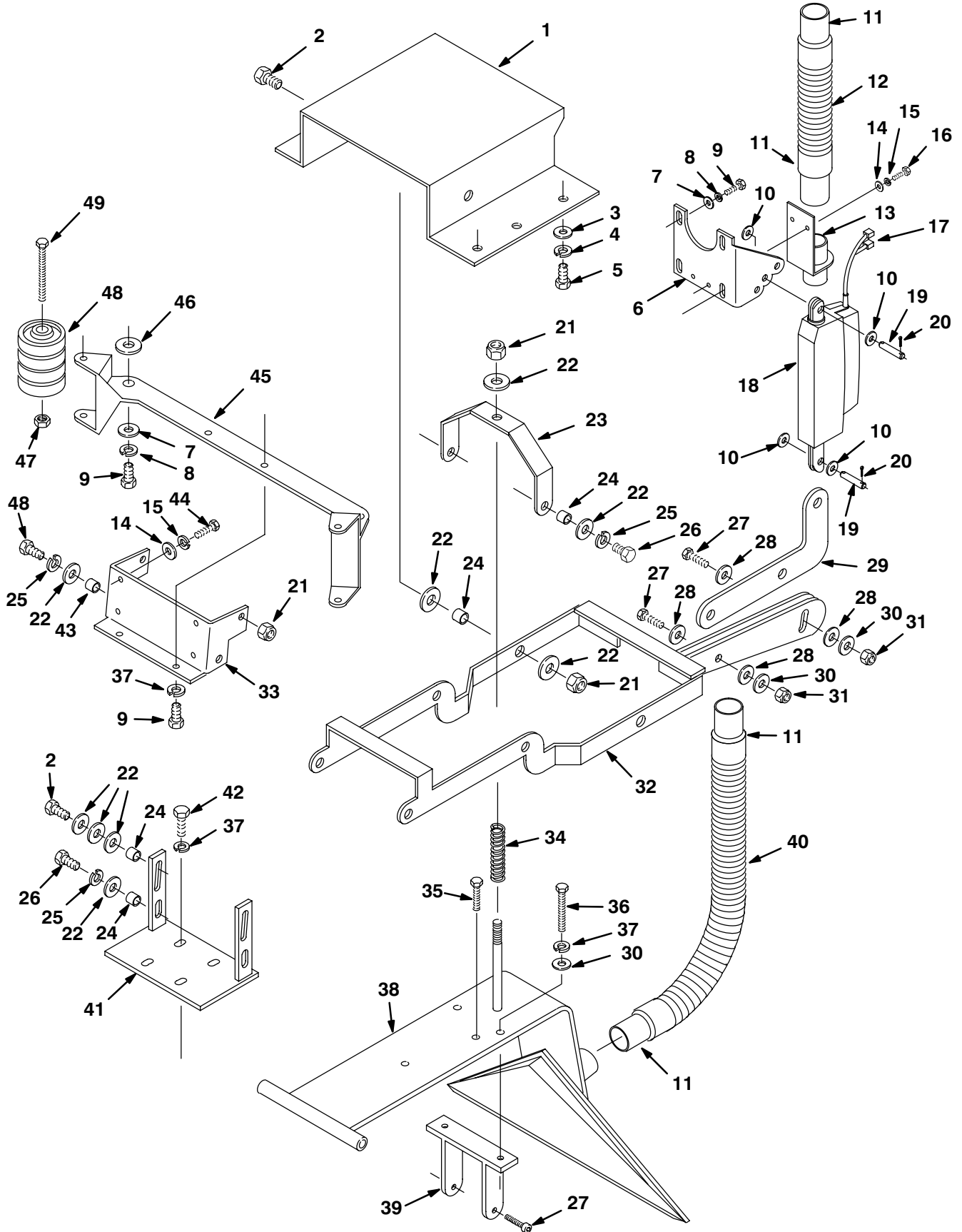
REF	PART #	DESCRIPTION	QTY.
21	602656	●MOTOR, VAC 7.2 /2 STAGE 24 VDC	1
	604403	CARBON BRUSH, SET OF 2	2
22	200 031 441	SCREW M6X1.0X25 HXHDCP	1
23	130192	TERMINAL, MALE 1/4 #10 12-10	2
24	603963	SPACER 6.5X12.7X41.2	2
25	578729	DECAL, READ MANUAL	1
26	603962	SCREW M6X1.0X60 HXHDCP	2
27	120906	DECAL, IMPORTANT DRAIN...	1
28	019 686 055	SPACER 6.5X15.8X6.4	1
29	140000	WASHER, FLAT	11
30	600311	●HINGE, RECOVERY TANK	1
∇31	603217	ASM., DRAIN HOSE	1
▲32	621324	PLUG, EXPANSION	2
▲33	578441	STRAP	1
▲34	630394	SLEEVE	1
▲35	630068	HOSE, DRAIN	1
▲36	140308	CLAMP	1

∇ ASSEMBLY

▲ INCLUDED IN ASSEMBLY

● RECOMMENDED STOCK ITEMS

LIFT GROUP



LIFT GROUP

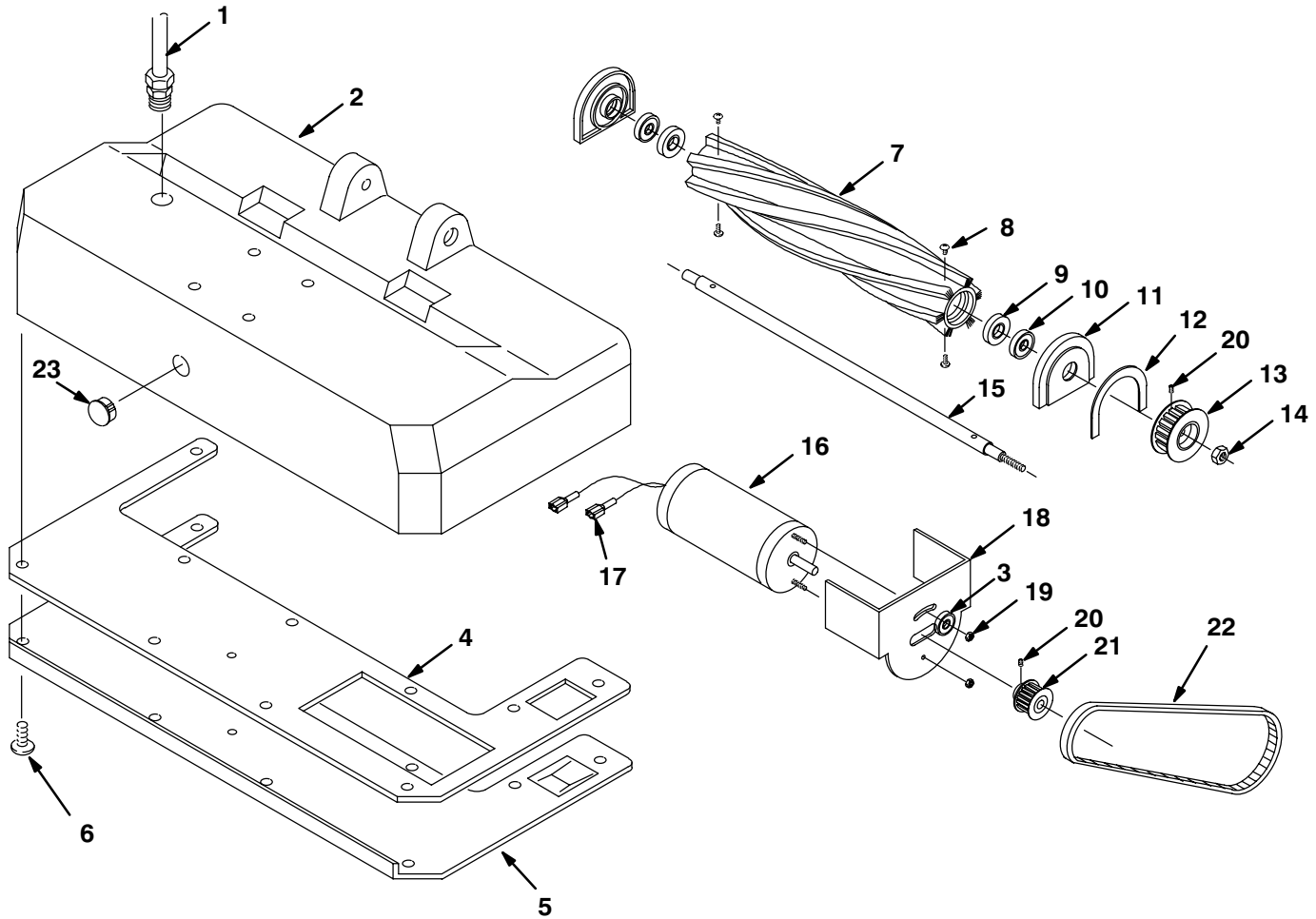
REF	PART #	DESCRIPTION	QTY.
1	600288	PLATE, BASE TRANSAXLE	1
2	140236	SCREW, 1/2-13X1 1/4	4
3	140028	WASHER, FLAT	2
4	140333	WASHER, LOCK	2
5	140276	SCREW, M10X1.5X16MM	2
6	600292	BRACKET, ACTUATOR	1
7	140027	WASHER, FLAT	4
8	140015	WASHER, LOCK	6
9	200 031 488	SCREW, M08X20MM	8
10	140036	WASHER, FLAT	4
11	160486	●CUFF, HOSE	4
12	160426	●HOSE, VAC 1.5X15" W/CUFFS	1
13	603084	BRACKET, VAC HOSE	1
14	140000	WASHER, FLAT	6
15	140016	WASHER, LOCK	6
16	200 031 432	SCREW, M06X10MM	2
17	130129	TERMINAL FM DSCNT 22-18 RED	2
18	600952	●ACTUATOR, 24VDC	1
19	604076	PIN, CLEVIS	2
20	578421	PIN, COTTER	4
21	140516	NUT	3
22	140045	WASHER, FLAT	17
23	602567	BRACKET, SPRING	1
24	602882	BUSHING	8
25	140024	WASHER, LOCK	6

REF	PART #	DESCRIPTION	QTY.
26	140352	SCREW, M12X1.75X25	4
27	140564	BOLT, SHOULDER 3/8X3/4	4
28	140036	WASHER, FLAT	4
29	603044	PLATE, ACTUATOR LIFT	4
30	140027	WASHER, FLAT	1
31	140546	NUT, NYLOCK	4
32	600305	BRACKET, LIFT EXTRACTOR	2
33	602977	BRACKET, MOUNT CARPET TOOL	1
34	602565	SPRING, CARPET TOOL	1
35	140221	SCREW, 5/16-18X1 1/4	2
36	140220	SCREW, 5/16-18X2 1/2	2
37	140015	WASHER, LOCK	8
38	600306	TOOL, CARPET	1
39	603046	BRACKET, BASE LEVELER	1
40	160613	●HOSE, VAC 1.5X30" W/CUFFS	1
41	600307	BRACKET, MOUNT EXTRACTOR	1
42	140226	SCREW, 5/16-18X5/8	4
43	140139	BUSHING, BRUSH LIFT PEDAL	2
44	140272	SCREW, M6X1.0X16MM	4
45	603093	BRACKET, BUMPER WHEEL	1
46	25732	WASHER, FLAT	2
47	140515	NUT, NYLOCK	2
48	630477	WHEEL, 2" GRAY	8
49	590248	SCREW, 38-16X4.75	2

● RECOMMENDED STOCK ITEMS

PARTS LIST

BRUSH BASE GROUP



REF	PART #	DESCRIPTION	QTY.
1	603193	CORD, 16/2X33 SJT	1
2	101106	BASE, 22"	1
3	200315016	WASHER, FLAT	1
4	100157	GASKET, BASE PLATE	1
5	230401.BK	PLATE, BASE	1
6	140197	SCREW, 10-24X3/8 TRSPHL	11
▽	700422	●ASM., BRUSH	1
▲7	240063	BRUSH, CYLINDER	1
▲8	140554	SCREW, 1/4-20X3/4	4
▲9	100049	SEAL, BRUSH BEARING	2
▲10	140125	BEARING, BRUSH	2
▲11	230261	BLOCK, BEARING	2

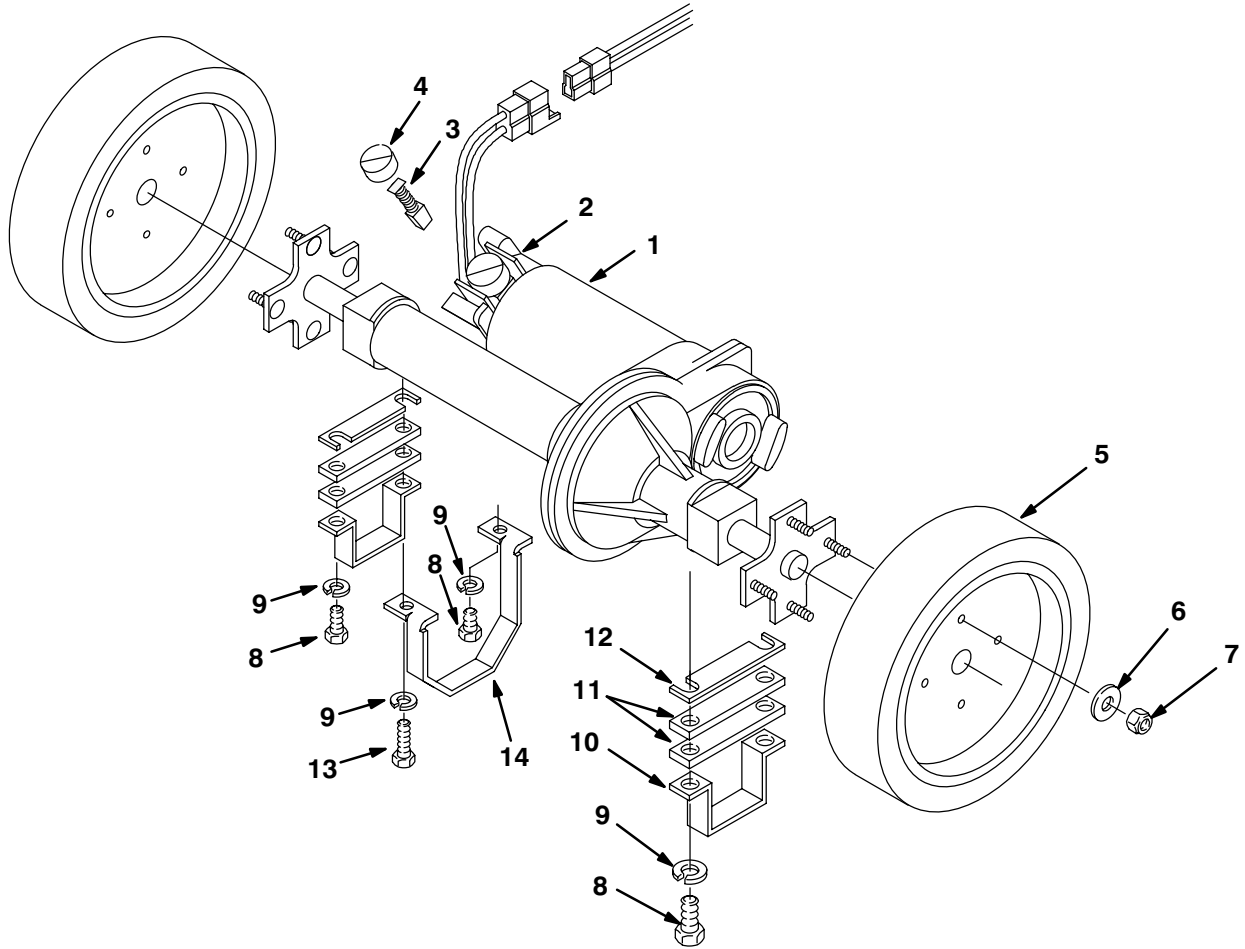
REF	PART #	DESCRIPTION	QTY.
▲12	100005	GASKET, BEARING BLOCK	1
▲13	230408	PULLEY, BRUSH	1
▲14	140548	NUT 5/16	1
▲15	230406	SHAFT, BRUSH	1
16	602965	●MOTOR, BRUSH DRIVE 24 VDC	1
17	130096	TERMINAL, MALE DSCNT 16-14	2
18	230411	BRACKET, BRUSH MOTOR	1
19	140518	NUT, KEP 10-32	2
20	140859	SCREW, SET 1/4-20X1/4	1
21	230410	●PULLEY, MOTOR	1
22	230409	●BELT, TIMING	1
23	130154	DOME PLUG	1

▽ ASSEMBLY

▲ INCLUDED IN ASSEMBLY

● RECOMMENDED STOCK ITEMS

DRIVE GROUP



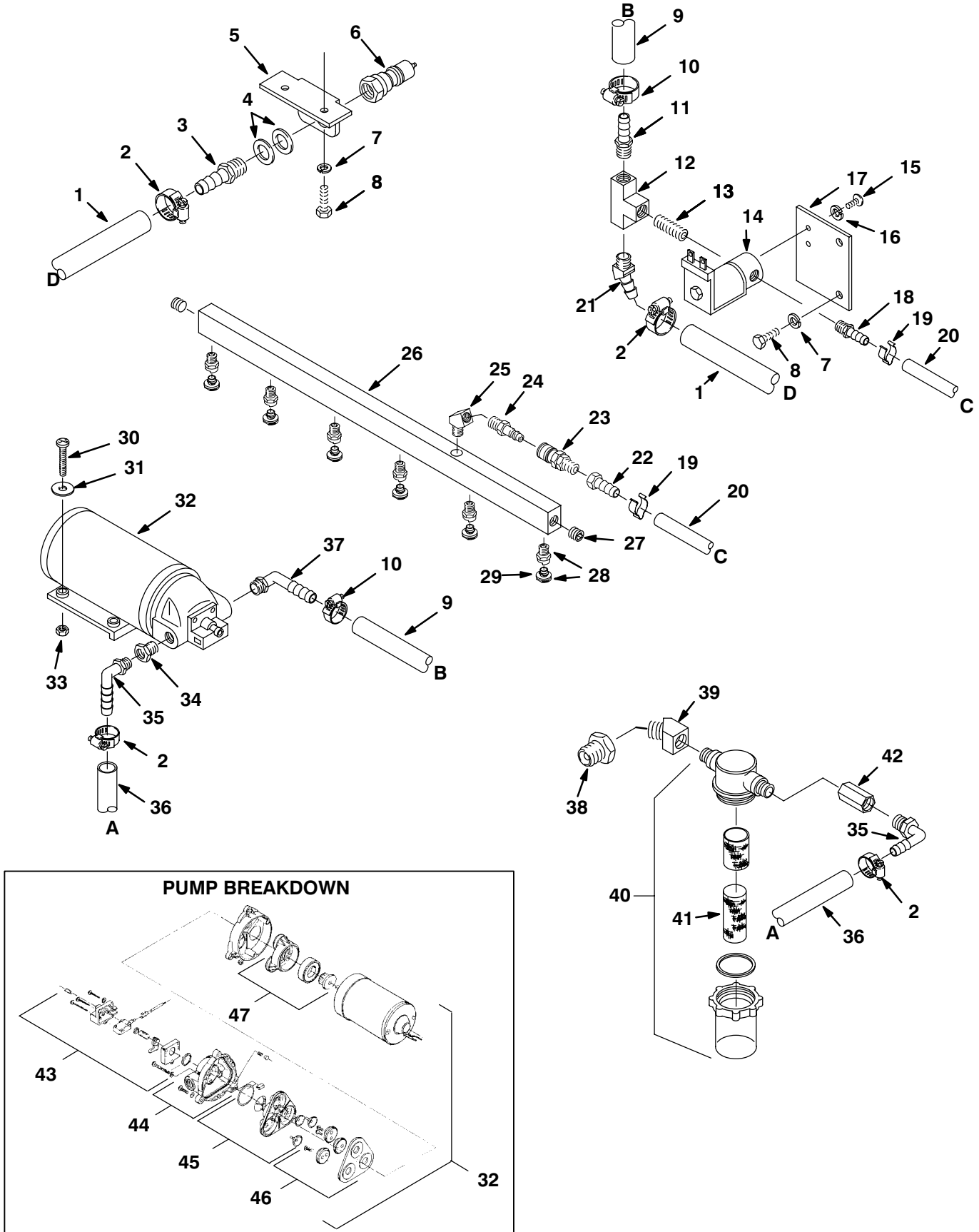
REF	PART #	DESCRIPTION	QTY.
▽1	630126	TRANSAXLE	1
▲2	600606	END BELL, TRANSAXLE MOTOR	1
▲3	630504	CARBON BRUSH	2
▲4	630503	CAP	2
5	640013	WHEEL, 8"	2
6	140000	WASHER, FLAT	8

REF	PART #	DESCRIPTION	QTY.
7	630268	NUT	8
8	612 255 000	SCREW, M10X35MM	4
9	140333	WASHER, LOCK	4
10	602881	BRACKET, TRANSAXLE MOTOR	2
11	600304	SPACER, AXLE 3/4X4X1/4	4
12	602883	SPACER, 3/4X4X1/8	2

▽ ASSEMBLY

▲ INCLUDED IN ASSEMBLY

PLUMBING GROUP



PLUMBING GROUP

REF	PART #	DESCRIPTION	QTY.
1	607704	HOSE, 3/8" X 24.5"	1
2	140310	CLAMP, HOSE	4
3	150516	HOSE BARB	1
4	140058	WASHER	2
5	603063	BRACKET, QC MOUNT	1
6	150933	PLUG, QUICK COUPLER	1
7	140016	WASHER, LOCK	4
8	578 187 000	SCREW, M06X12MM	2
9	607705	HOSE, 1/2" X 24" RED	1
10	630369	CLAMP, HOSE	2
11	150517	HOSE BARB	1
12	150706	TEE	1
13	150615	NIPPLE 1/4 CLOSE	1
14	603030	●SOLENOID, WATER 24 VDC	1
15	140801	SCREW, 8-32X3/8	2
16	140023	WASHER, LOCK	2
17	603055	BRACKET, SOLENOID	1
18	150515	HOSE BARB	1
19	140325	CLAMP	2
20	607706	HOSE, 1/4" X18"	1
21	28303	HOSE BARB	1
22	150520	HOSE BARB	1
23	150915	COUPLER, QUICK	1
∇	700423	ASM., SPRAY BAR	1
▲24	150921	PLUG, QUICK COUPLER	1
▲25	150422	ELBOW, STREET 1/8MX1/8F 45°	1
▲26	230407	MANIFOLD, SPRAYBAR	1

REF	PART #	DESCRIPTION	QTY.
▲27	150208	PLUG	2
▲28	201011	●NOZZLE, TWISTOUT (80015)	6
29	201013	●TIP, REPLACEMENT (80015)	6
30	140899	SCREW, 10-24X1 1/4	2
31	140012	WASHER, FLAT	2
32	603031	●PUMP, 100 PSI 24 VDC	1
33	140552	NUT, NYLOCK	2
34	150006	BUSHING	1
35	150409	ELBOW, 90	1
36	607305	TUBING, 3/8" X 30" GRAY VINYL	1
37	150425	ELBOW, 3/8MX1/2H 90°	1
38	150101	BUSHING	1
39	150403	ELBOW, STREET 1/4X45°	1
40	180619	FILTER, 1/4 NPT CLEAR BOWL	1
41	180638	●SLEEVE, NYLON FILTER	1
42	150302	COUPLING, 1/4FX1/4F	1
43	190129	●KIT, PUMP PRESSURE SWITCH	1
	190172	●KIT, PUMP PRES SWITCH (VITON)	1
	190134	●KIT, PUMP DIAPHRAGM ONLY	1
44	190128	●KIT, PUMP UPPER HOUSING	1
	190124	●KIT, PUMP CHECK VALVE ONLY	1
45	190171	●KIT, PUMP VALVE (VITON)	1
46	190131	●KIT, PUMP SERVICE	1
47	190130	●KIT, PUMP LOWER HOUSING	1

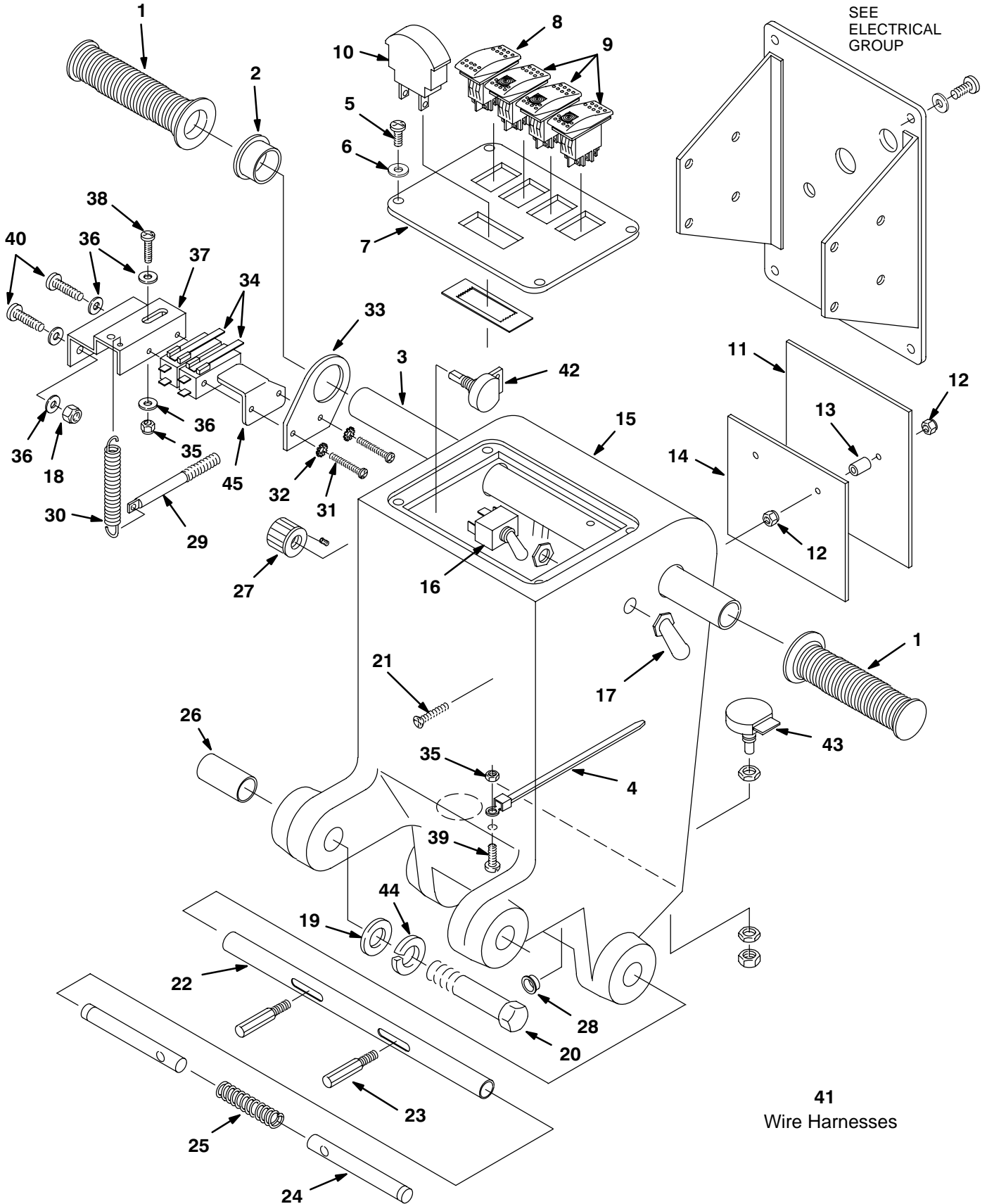
∇ ASSEMBLY

▲ INCLUDED IN ASSEMBLY

● RECOMMENDED STOCK ITEMS

PARTS LIST

CONSOLE GROUP



CONSOLE GROUP

REF	PART #	DESCRIPTION	QTY.
1	200823	GRIP, HANDLE TUBE	2
2	27099	BUSHING	1
3	603050	HANDLE, TUBE	1
4	26561	CABLE TIE	1
5	578 141 000	SCREW, M5X10MM	8
6	140018	WASHER, LOCK	8
7	602978	PANEL, CONTROL W/SILKSCREEN	1
8	602919	●SWITCH, DPDT ON/ON	1
9	601107	●SWITCH, LIGHTED ROCKER	3
10	130015	METER, BATTERY VOLTAGE 24V	1
11	630104	●SPEED CONTROL, PMB, 55 AMP	1
12	200 160 014	NUT	4
13	630261	SPACER	2
14	630128	HEAT SINK	1
15	608299	HOUSING, CONTROL, GREEN	1
16	601108	●SWITCH, TOGGLE	1
17	130753	BOOT, SWITCH	1
18	140284	NUT	2
19	140045	WASHER, FLAT	2
20	140351	SCREW, M12X1.75X70MM	2
21	630304	SCREW, M4X35MM	2
22	230715	TUBE, HANDLE ADJUSTMENT	1
23	230649	PIN, HANDLE ADJUSTMENT	2

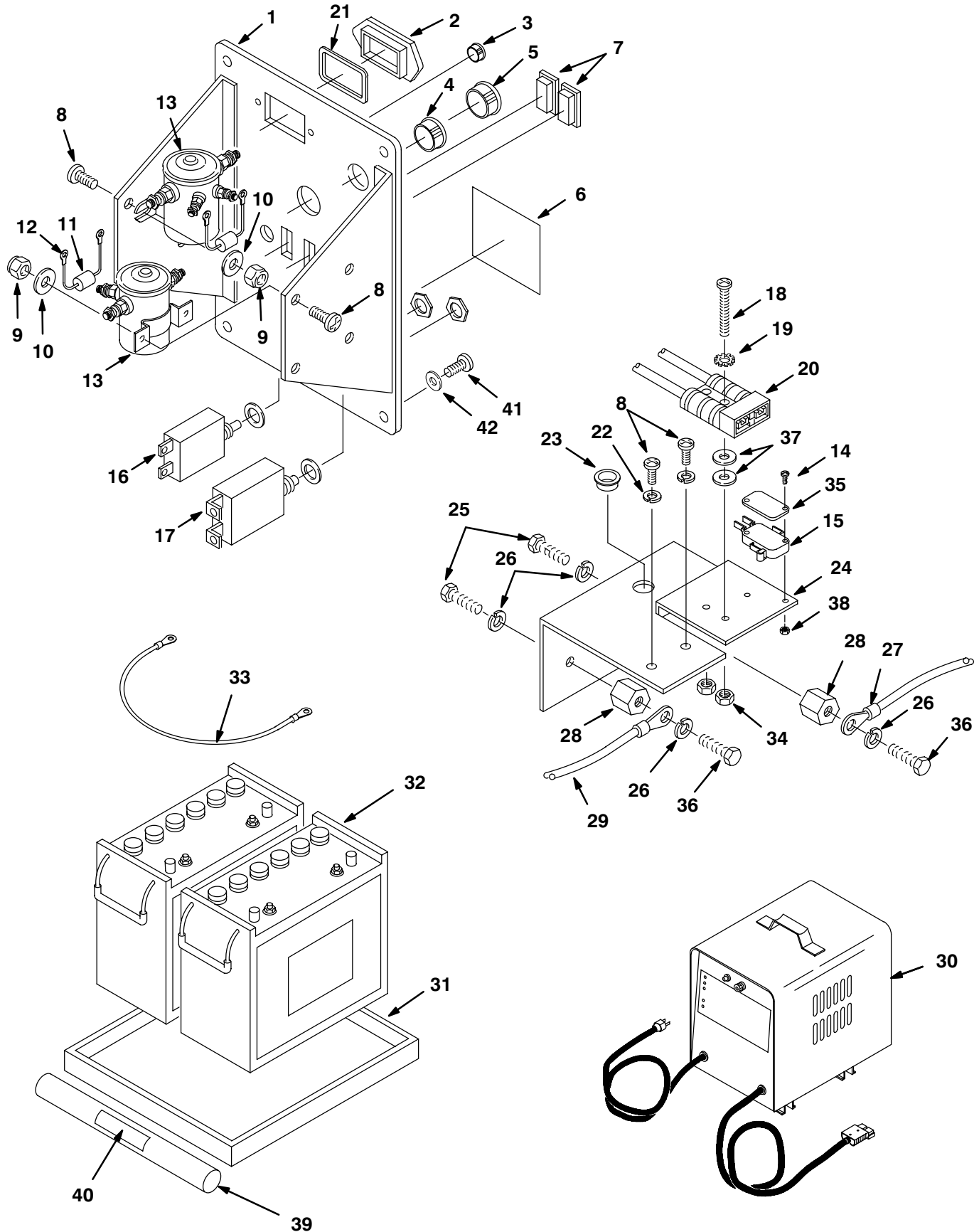
REF	PART #	DESCRIPTION	QTY.
24	230710	PIN, HANDLE LOCK	2
25	140415	SPRING, LOCK PIN	1
26	140155	BUSHING	2
27	601110	KNOB, SPEED CONTROL	1
28	603007	BUSHING, SNAP	1
29	602886	PIN, SPRING RETURN	1
30	601118	SPRING, EXPANSION	1
31	140830	SCREW 6-32X1-5/8	2
32	140019	WASHER, LOCK	2
33	27098	BRACKET, SWITCH	1
34	130729	●SWITCH, ROLL	2
35	140552	NUT	2
36	140000	WASHER, FLAT	4
37	25671	MOUNT, SWITCH	1
38	140890	SCREW. 10-24X1/2	1
39	140900	SCREW 10-24X3/4	2
40	578 321 000	SCREW, M6X16MM	2
41	602873	HARNESS CONSOLE W/POT. (N/S)	1
	603188	HARNESS, WIRE MAIN (N/S)	1
42	130776	●POTENTIOMETER, 50K	1
43	130775	●POTENTIOMETER, 50K LOCKABLE	1
44	140024	WASHER, LOCK	2
45	603830	PLATE, GUARD SWITCH	1

● RECOMMENDED STOCK ITEMS

N/S= NOT SHOWN

PARTS LIST

ELECTRICAL GROUP



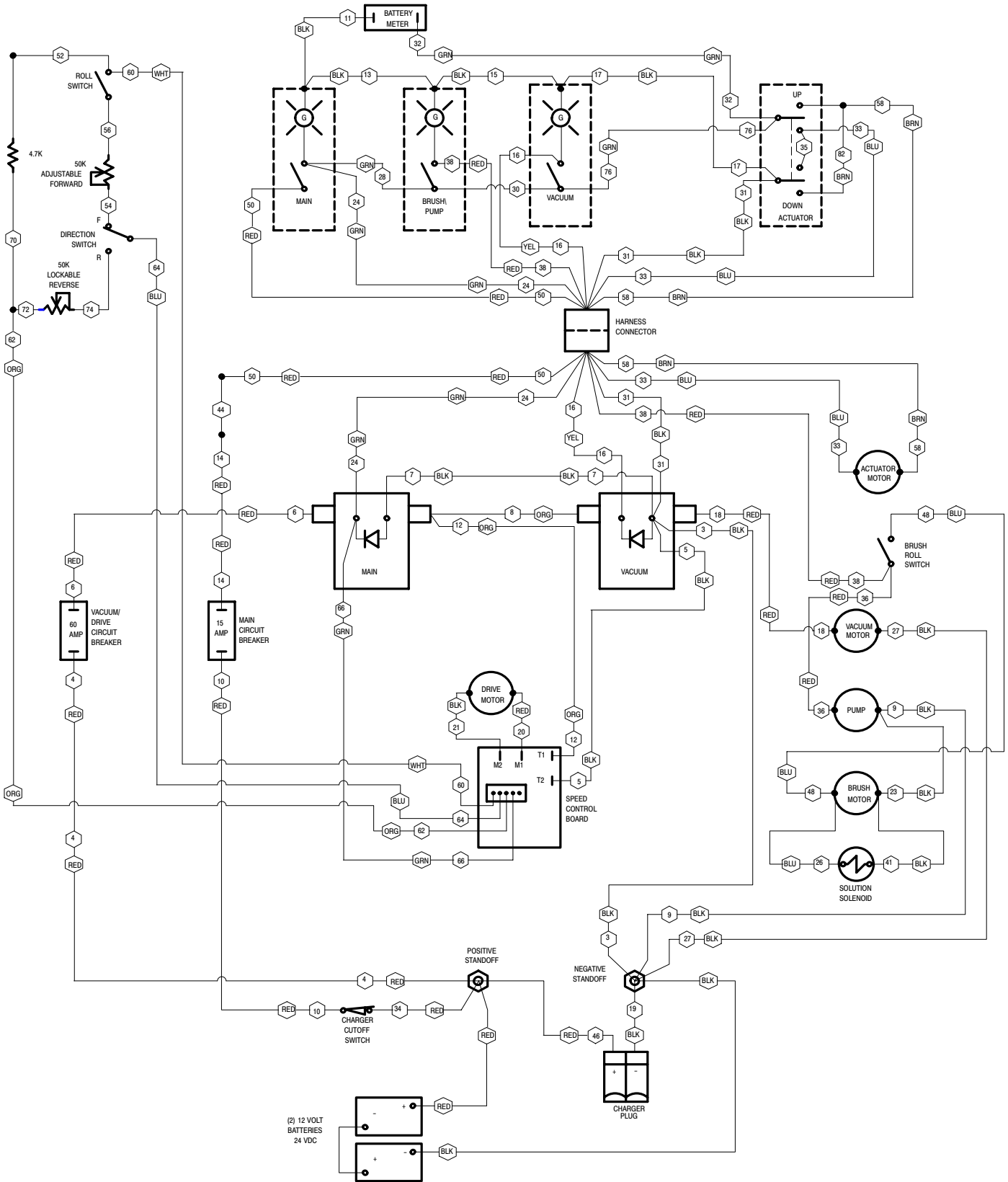
ELECTRICAL / BATTERY GROUP

REF	PART #	DESCRIPTION	QTY.
1	602559	PANEL, CONTROL HOUSING	1
2	222519	PLUG	1
3	069 764 626	PLUG, HOLE 012.7	1
4	130161	PLUG, DOME .875	1
5	130175	PLUG, DOME .750	1
6	630420	DECAL, FLAMMABLE MATERIAL	1
7	582150	PLUG, ACCESSORY SWITCH	2
8	578 321 000	SCREW, M6X16MM	6
9	140284	NUT	4
10	140000	WASHER, FLAT	4
11	130423	●DIODE, 400V	2
12	130125	RING, TERMINAL	4
13	130218	●SOLENOID, 24V	2
14	578 403 000	SCREW, M3X20MM	2
15	600437	●SWITCH, ROLLER	1
16	603487	●BREAKER, CIRCUIT BRUSH 15AMP	1
17	130739	●BREAKER, CIRCUIT 60AMP	3
18	140829	SCRW, 6-32X1	2
19	140019	WASHER, LOCK	2
20	27833	CONNECTOR, 50A WO/CONTACTS	1
21	603224	O RING .926ID X .996OD	1

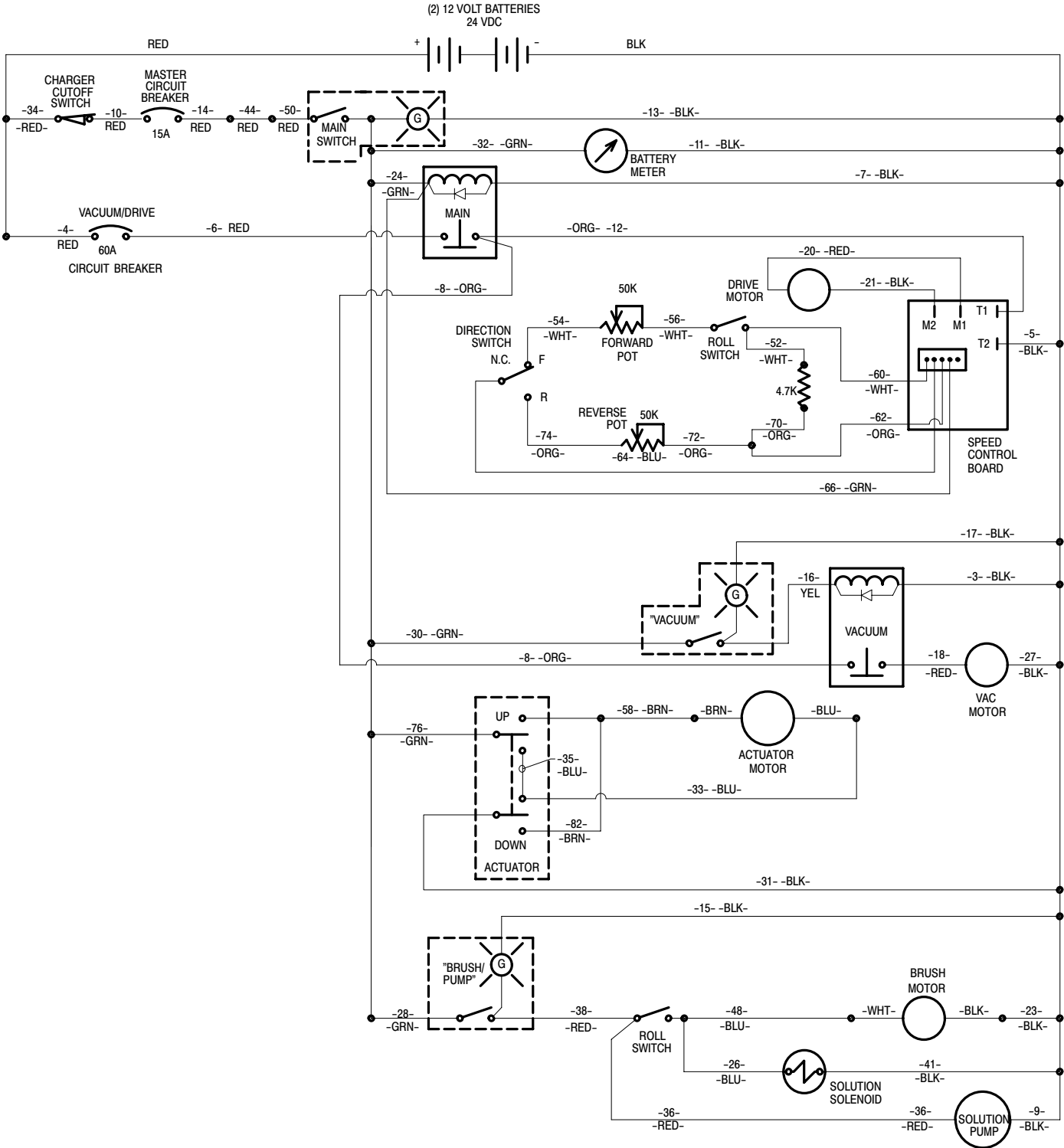
REF	PART #	DESCRIPTION	QTY.
22	140018	WASHER, LOCK	2
23	130698	BUSHING, SNAP	4
24	603191	BRACKET, CHGR W/STANDOFF	1
25	140553	SCREW, 1/4-20X1/2	2
26	140016	WASHER, LOCK	4
27	602871	CABLE, BATTERY #6 BLACKX24"	1
28	578427	STANDOFF	2
29	603192	ASM., WIRE #6X650MM RED	1
30	603235	CHARGER 24DC/20A	1
31	601991	TRAY, BATTERY	1
32	600394	BATTERY, 12V 215A	2
33	130364	CABLE, BATTERY #6 BLACKX15"	1
34	140539	NUT	2
35	601359	PLATE, SWITCH BACKING	1
36	140259	SCREW 1/4-20X5/8 HXHDPC	2
37	140032	WASHER, FLAT	4
38	579211	NUT, LOCK	1
39	602592	SUPPORT TUBE BATTERY	1
40	603828	DECAL, BATTERY PLACEMENT	1
41	578141000	SCREW M5X10 PANPHL	4
42	140018	WASHER #10 INT	4

● RECOMMENDED STOCK ITEMS

WIRE DIAGRAM

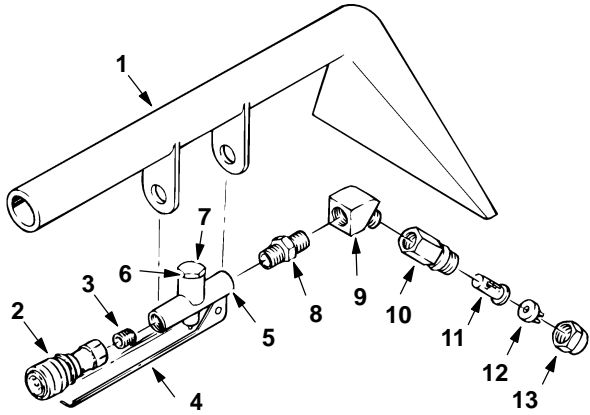


LADDER DIAGRAM



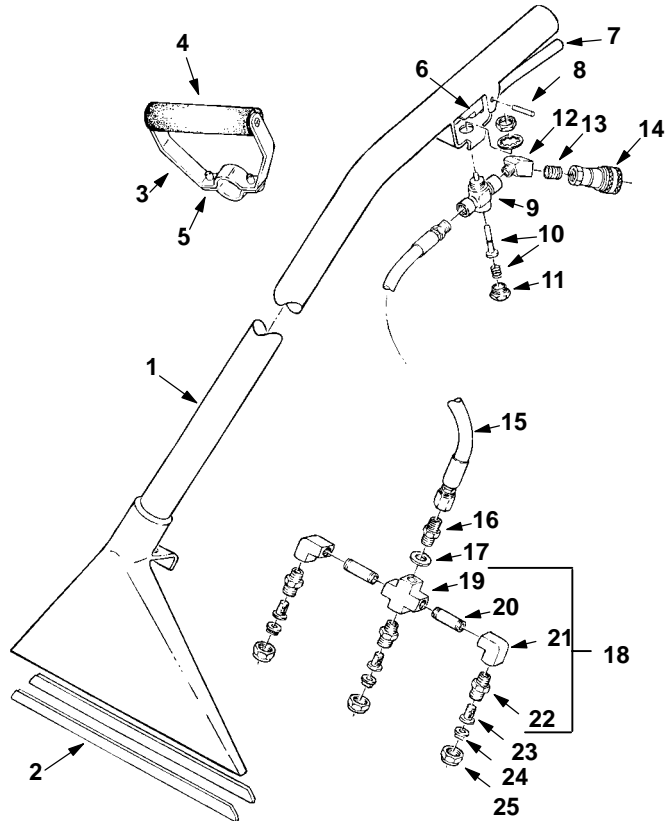
OPTIONS

127 mm (5 in) HAND TOOL



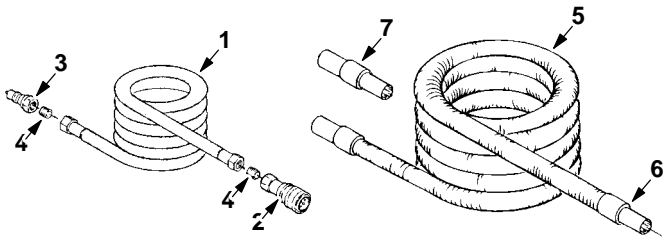
REF	PART #	DESCRIPTION	QTY.
	200505	TOOL, HAND (COMPLETE)	1
1	200431.BK	TOOL, HAND	1
2	150913	COUPLER, QUICK (SER. 60)	1
3	150615	NIPPLE, CLOSE	1
4	200905	TRIGGER, HAND TOOL	1
5	210210	VALVE, FLOW CONTROL	1
6	190600	VALVE PIN & SPRING (NOT SHOWN)	1
7	N/A	CAP, VALVE	1
8	150606	NIPPLE, HEX 1/4	1
9	150403	ELBOW, ST 1/4 45°	1
10	200992	BODY, SPRAY 1/4F	1
11	200996	SCREEN, SPRAY NOZZLE	1
12	200965	TIP, SPRAY #8002	1
13	200994	CAP, SPRAY BODY	1

FLOOR TOOL



REF	PART #	DESCRIPTION	QTY.
	600048	FLOOR TOOL (COMPLETE)	1
1	200403.BK	TOOL, FLOOR	1
2	200939	SHOES, S/S, FLOOR TOOL	2
3	200927	GRIP, ADJUSTABLE (COMPLETE)	1
4	200912	GRIP, FOAM	1
5	140259	SCREW, 1/4-20X5/8	1
6	200902	TRIGGER, FLOOR TOOL	1
7	200809	SLEEVE, TRIGGER	1
8	140605	PIN	1
	140520	NUT, PUSH (NOT SHOWN)	2
9	210150	VALVE, FLOW CONTROL	1
10	190603	KIT, VALVE PIN & SPRING	1
11	N/A	CAP, HEX, VALVE	1
12	150403	ELBOW, 1/4-45°	1
13	150615	NIPPLE, CLOSE 1/4	1
14	150913	COUPLER, QUICK SER. 60	1
15	160170	HOSE, SOLUTION, LP	1
16	150606	NIPPLE, HEX 1/4"	1
17	140058	WASHER	1
∇18	700062	ASM., SPRAY BAR	1
▲19	150700	CROSS	1
▲20	150600	NIPPLE	2
▲21	150401	ELBOW, 90° 1/4FX1/4F	2
▲22	200993	SPRAY BODY	3
23	200996	SCREEN, SPRAY BODY	3
24	200964	TIP	3
25	200994	CAP, SPRAY BODY	3

SOLUTION AND VACUUM HOSES



REF	PART #	DESCRIPTION	QTY.
∇1	160185	HOSE, SOLUTION 15'	1
∇1	160186	HOSE, SOLUTION 25'	1
▲2	150913	COUPLER, QUICK SER. 60	1
▲3	150933	PLUG, QUICK COUPLER	1
▲4	150615	NIPPLE	2
∇5	160400	HOSE, VACUUM 15' W/ CUFFS	1
∇5	160401	HOSE, VACUUM 25' W/ CUFFS	1
▲6	160430	CUFF, HOSE 1-1/2"	2
▲7	160451	CONNECTOR, VACUUM HOSE 1-1/2"	1

∇ Assembly

▲ Included in Assembly