

# Spectrum™ 12H

Single Motor Upright 12 inch Vacuum

**Better dirt pickup. Better filtration. Better value.**



Designed to withstand the grueling environment and unique operational needs found in the hospitality market, the Spectrum™ 12H delivers exceptional cleaning performance and superior filtration. You will notice the difference, and so will your guests.

- Industry-leading design delivers exceptional dirt pick up and edge cleaning, allowing for one pass cleaning and greater staff productivity.
- High efficiency, three-stage H.E.P.A. filtration system improves indoor air quality for operator and guest comfort
- Comfortable, quick-draw wand and onboard tools simplify detailing work
- Lightweight, ergonomic design for greater operator comfort
- Meets LEED requirements with CRI Seal of Approval and low sound level.



**Smart cleaning.**

A Nilfisk-Advance Brand



# Spectrum™ 12H

## Single Motor Upright 12 inch Vacuum



Quick change filter bag and convenient spare bag storage



Industry-leading three-stage sealed H.E.P.A. filtration removes 99.97% of all particles >0.3 microns for improved IAQ



Quick-draw wand and onboard tools simplify detailing work



Easy access to clogs, minimizing potential downtime



Two cord restraints protect against cord abuse and a detachable cord allows for quick service



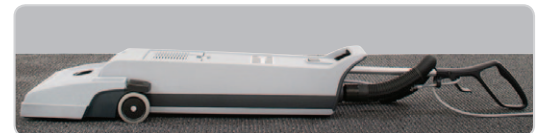
Indicator light shows when bag is full or vacuum is clogged



### Technical Specifications

Model	Spectrum™ 12H
Vacuum Motor	120 V, 60 Hz, 1,000 W, 9 amp, 2-stage
Motor Protection	Airflow bypass valve and thermal overload protection
Suction (waterlift) / Airflow	92 in / 93 cfm
Brush	Dual row, chevron style, nylon with variable manual adjustment
Brush Speed	2,800 RPM
Cleaning Path	11.5 in (29.2 cm)
Filtration	2-ply paper filter bag, motor protection filter, certified H.E.P.A. exhaust filter
Bag Capacity	4.2 qt (4 L)
Power Cable	33 ft (10 m) 18/3 wire, gray, detachable
Sound Level	69 dB A
Onboard Tools	4:1 stretch hose, wand, crevice and upholstery tools
Dimensions (LxWxH)	13 in x 12 in x 44 in (33 cm x 30 cm x 113 cm)
Weight (with cord)	19.3 lb (8.3 kg)
Warranty	Motor and belts – 2 Years, Non-wear parts – 1 Year, Labor – 1 Year
Part number	107402351
Approvals	CRI (Carpet & Rug Institute) Seal of Approval LEED-EBOM (Leadership in Energy and Environmental Design for Existing Buildings: Operations & Maintenance)

Specifications are subject to change without notice.



Low profile for cleaning under furniture and in confined spaces

14600 21st Avenue North  
Plymouth, MN 55447-3408  
www.advance-us.com  
Phone 800-850-5559  
Fax 800-989-6566

240 Superior Boulevard  
Mississauga, Ontario, Canada L5T 2L2  
www.nilfisk-advance.ca  
Phone 800-668-8400  
Fax 800-263-5111



©2012 Nilfisk-Advance, Inc.  
Printed in U.S.A. Form L3246A, 3-13-12



# Advance