

# Reel Cleaner®

## All-Purpose Restroom Cleaner



# Advance

## FACT SHEET



### STANDARD ACCESSORIES INCLUDE

- Two Bend Wand
- Variable Pressure Spray Gun
- Scrub Brush
- Floor Squeegee Tool
- Hand Squeegee Tool
- Blower Tool
- Floor Drain Tool
- Metering Tip Packet
- Primer Hose

### TYPICAL APPLICATIONS INCLUDE

- Healthcare Facilities
- Schools and Universities
- Government Facilities
- Large Retail/Malls
- Shopping Malls
- Factories
- Airports
- Retail Stores

Cleaning hard surfaces and fixtures is a snap with the multi-functional Reel Cleaner®. Designed as a touchless cleaning system, timely manual wipe-downs are a thing of the past.

The Reel Cleaner makes touchless cleaning more convenient. Its unique reels are designed to store each of the hoses, eliminating tangle hassles and reducing storage space. The compact size of the Reel Cleaner allows for easy maneuverability and good sight lines for transporting. In addition, a clean water sight gauge assists in monitoring the amount of water in the tank and enables dumping the tank without plugging in the machine.

Using the Reel Cleaner increases productivity and employee moral. Tedious, time consuming tasks of wiping down fixtures, scrubbing hard to reach areas and dusting difficult surfaces are eliminated by the ability to spray or blow dirt away. The Reel Cleaner has a 25 gallon clean water tank, enabling more area to be cleaned before dumping and refilling the tank. The ergonomic handle is adjustable so operators can move the machine with ease.

The Reel Cleaner is designed with Total Clean® technology in mind. Equipped with a standard accessory kit, the Reel Cleaner has a storage place for each accessory. There are two chemical bottle wells designed to fit round or square bottles. The housing for the motor and pump is easy to access for maintenance. Not only is the Reel Cleaner designed to clean better, it is also easier to clean and maintain.

The Reel Cleaner, combined with the chemical of your choice, makes touchless cleaning of restrooms, kitchens, locker rooms, stairwells and other non-absorbent areas effortless, improving cleanliness and productivity.

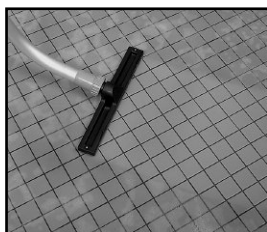


# Advance Reel Cleaner®

## All-Purpose Restroom Cleaner



The spray gun makes dirt removal easy in hard to reach areas and allows for quick rinsing of surfaces.



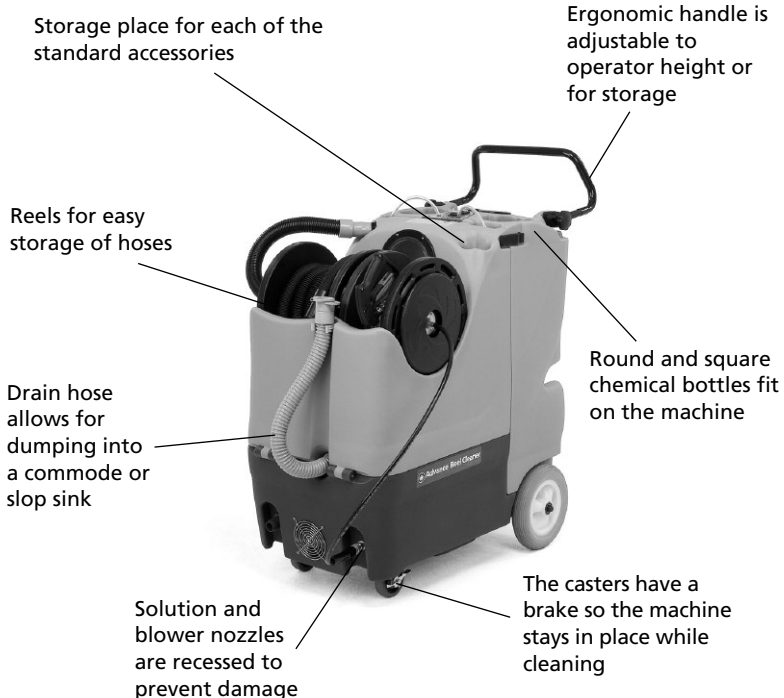
Soils and contaminants are vacuumed from the floor leaving the area clean and dry.



Clam-Shell design allows easy access to motor and pump.



Solution gauge for monitoring amount of solution in the tank or for emptying.



## Defining Cleaning Innovation...

- Our products are designed using innovative technology that increases productivity and drives down the cost to clean.
- You can get expert service and maintenance for your Advance machines from factory-trained personnel around the world. Fast parts delivery, too.
- Maintain peak performance with Nilfisk Genuine OEM Parts.

Nilfisk Genuine OEM Parts

## Technical Specifications

<b>Vacuum Motor</b>	115 V / 60 hz, 12 amp, 1,400 W, three-stage.
<b>Waterlift</b>	117 in (297 cm)
<b>Air Flow</b>	100 cfm (2,832 L/min)
<b>Tank Construction</b>	Rotational Molded Polyethylene
<b>Solution Tank Capacity</b>	25 gal (95 L)
<b>Recovery Tank Capacity</b>	22 gal (83 L)
<b>Application Flow</b>	300 psi @ nozzle, 1 gpm
<b>Solution Hose Length</b>	50 ft (15.25 m)
<b>Recovery Hose Length</b>	25 ft with 1.5 in diameter (7.5 m x 3.8 cm)
<b>Blower Hose</b>	13 ft (4 m)
<b>Power Cord</b>	50 ft safety yellow with GFCI (15.25 m)
<b>Rear Wheels</b>	2 - 10 in (25 cm)
<b>Front Casters</b>	2 - 4 in (10 cm) w/brake
<b>Dimensions</b>	Length – 36 in (91 cm) Height – 40 in (101 cm) Width – 21 in (53 cm)
<b>Weight</b>	Net – 135 lb (61.2 kg) Shipping – 180 lb (81.5 kg)
<b>Part Number</b>	56108050

Specifications are subject to change without notice.



# Advance

14600 21st Avenue North  
Plymouth, MN 55447-3408  
www.advance-us.com  
Phone: 800-850-5559  
Fax: 800-989-6566

240 Superior Boulevard  
Mississauga, Ontario, Canada L5T 2L2  
www.nilfisk-advance.ca  
Phone: 905-564-1149 or 800-668-8400  
Fax: 905-564-1030 or 800-263-5111

©2012, Nilfisk-Advance, Inc.,  
Printed in U.S.A., Form L1410A 4-12

