

**Spare parts list**  
**(5.971-886.0) Spare parts list B60 W Bp UL**

## DE HINWEISE

### Weitere Sprachen:

Diese Ersatzteilliste ist in weiteren Sprachen erhältlich. Sie erhalten diese unter [www.kaercher.com](http://www.kaercher.com) im Bereich Service. Die Schreibweise der Teilenummer, z.B. 75456380, entspricht der Teilenummer 7.545-638.0.

### Mengenangaben:

Die Mengenangaben in der Ersatzteilliste entsprechen den in der Baugruppe verbauten Stückzahlen der Bauteile.

### Meterware:

Ersatzteile welche als Meterware geliefert werden sind auf Einbaulänge selbst zu kürzen. Die Stückzahlen sind als Mindestbestellmenge =1m angegeben und müssen je nach Bedarf auf weitere volle Meterzahlen erhöht werden.

### Versionen/ Werknummern:

Sind Versionen oder Werknummern in der Ersatzteilliste angegeben, ist anhand dieser vor Bestellung zu prüfen, welches Bauteil für ihr Gerät verwendet werden muss.

### Lackierte Teile:

Bei Bestellungen von lackierten Teilen welche in der Ersatzteilliste nicht in verschiedenen Farben ausgewiesen sind, ist zusätzlich die Farbnummer oder Farbe mit anzugeben.

### Technische Änderungen:

Technische Änderungen sowie das Recht der ausschließlichen Auswertung unseres geistigen Eigentums behalten wir uns vor.

## EN INSTRUCTIONS

### Other languages:

This list of spare parts is also available in other languages. You can get this list from [www.kaercher.com](http://www.kaercher.com) in the Service division. The designation of the part number e.g. 75456380 is equal to 7.545-638.0.

### Quantity details:

The quantity details in the spare parts list correspond to the number of pieces of the component installed in the assembly group.

### Piece goods:

Spare parts that are sold as piece goods are to be cut to the desired length. The quantities have been indicated as minimum order quantity =1m and must be rounded off to the full meter figure depending on your requirements.

### Version/ Plant numbers:

If version or plant numbers are mentioned in the spare parts list, then use the same to check before ordering which spare part needs to be used for your appliance.

### Painted parts:

While ordering painted parts that are not mentioned in the spare parts list in their colour variations, please mention the colour number or the colour you require.

### Technical changes:

We reserve the right to make technical changes as well as the right to exclusive use of our intellectual property.

## FR REMARQUES

### Autres langues:

Cette liste de pièces de rechange est disponible en autres langues. Cela est disponible sous [www.kaercher.com](http://www.kaercher.com) dans le menu Service. La désignation du numéro de pièce, par ex. 75456380, correspond au numéro de pièce 7.545-638.0.

### Indications de quantité:

Les indications de quantité dans la liste de pièces de rechange correspondre aux nombres de pièces des composant utilisées dans la construction.

### Matériel au mètre:

Les pièces de rechange qui sont livrées au mètre doivent être raccourcies à longueur souhaitée par l'acheteur même. Les nombres des pièces sont indiquées en quantité de commande minimale = 1m et doivent être augmentés selon le besoin à une chiffre de mètre complète.

### Versions/ Numéros d'usine:

Lorsqu'il sont indiquées des versions ou des numéros d'usine dans la liste de pièces de rechange, vous devez vérifier que composant doit être utilisé pour votre appareil.

### Pièces laquées:

Pour commander des pièces laquées, où les différentes couleurs ne sont pas indiquées dans la liste des pièces de rechange, vous devez indiquer en plus le numéro de la couleur ou seulement la couleur.

### Modifications techniques:

Nous nous réservons la possibilité des modifications techniques ainsi le droit d'exploitation exclusive de notre propriété intellectuelle.

## IT AVVERTENZE

### Altre lingue:

Il presente elenco di parti di ricambio è disponibile sul nostro sito Web anche in altre lingue: sotto [www.kaercher.com](http://www.kaercher.com) alla voce "Service".

L'indicazione del codice pezzo, ad es. 75456380, corrisponde al codice pezzo 7.545-638.0

### Indicazioni di quantità:

Le indicazioni di quantità riportate dall'elenco "parti di ricambio" corrispondono al numero delle singole componenti contenute nella rispettiva unità.

### Merce a metro:

Le parti di ricambio fornite come "merce a metro" devono venire in seguito accorciate alla lunghezza necessaria per il montaggio. La quantità unitaria è indicata come "quantità minima di ordinazione = 1m" e deve all'occorrenza venire moltiplicata per il numero intero di metri necessari.

### Versioni / Numeri di fabbricazione:

Quando l'elenco "parti di ricambio" riporta diverse versioni o numeri di fabbricazione, confrontare la versione o il numero di fabbricazione del ricambio desiderato con quelle/i presenti nell'elenco e indicarla/o al momento dell'ordinazione.

### Parti di ricambio verniciate:

Nel caso di ricambi verniciati, se l'elenco parti di ricambio non ne riporta espressamente i diversi colori, al momento dell'ordinazione è necessario indicare anche il colore o il numero del colore desiderato.

### Modifiche tecniche:

Ci riserviamo il diritto di apportare modifiche tecniche così come il diritto di utilizzo esclusivo della nostra proprietà intellettuale.

## ES INDICACIONES

### Otros idiomas:

La lista de piezas de repuesto se puede adquirir en otros idiomas. La puede adquirir en [www.kaercher.com](http://www.kaercher.com) en el área de servicios.

La notación de los números de las piezas, p.ej. 75456380 corresponde al número de pieza 7.545-638.0.

### Cantidades:

Las indicaciones de cantidades de la lista de piezas de repuesto corresponden al número de piezas montadas en el componente.

### Mercancía por metros:

Las piezas de repuesto que se suministran por metros se pueden cortar al largo deseado. La unidad mínima de pedido es de = 1 m y el número de metros completos se puede aumentar según necesidad.

### Versiones/números de fábrica:

Si se indica la versión o número de fábrica en la lista de piezas de repuesto, se debe comprobar en ella la pieza a usar para su aparato antes de realizar el pedido.

### Piezas lacadas:

Al realizar pedidos de piezas lacadas que no estén indicadas en los diferentes colores en la lista de piezas de repuesto, se debe indicar también la referencia del color o el color.

### Modificaciones técnicas:

Reservados los derechos de realizar modificaciones técnicas y aprovechar nuestra propiedad intelectual.

## PL WSKAZÓWKI

### Pozostałe języki:

Ta lista części zamiennych jest dostępna w także w innych językach. Mogą ją Państwo pobrać ze strony [www.kaercher.com](http://www.kaercher.com) w dziale Serwis.

Sposób zapisywania numeru części, np. 75456380, odpowiada numerowi części 7.545-638.0.

### Dane ilości:

Dane ilości podane w liście części zamiennych odpowiadają liczbie sztuk podzespołów tworzących dany moduł.

### Towar sprzedawany na metry:

Części zamienne dostarczane jako towar sprzedawany na metry po zamontowaniu należy samodzielnie skrócić do potrzebnej długości. Liczba sztuk podana jest jako minimalna ilość zamówienia = 1m i w zależności od potrzeb zwiększa się ją o kolejne pełne metry.

### Wersje/ Numer zakładu:

Jeżeli w liście części zamiennych podane są wersje lub numery zakładu, przed zamówieniem na ich podstawie należy sprawdzić, który podzespół stosuje się w Państwa urządzeniu.

### Części lakierowane:

W przypadku zamówień części lakierowanych, które w liście części zamiennych nie podano w wielu kolorach, należy dodatkowo zaznaczyć nr koloru lub kolor.

### Zmiany techniczne:

Zastrzegamy sobie prawo do zmian technicznych oraz wyłącznego wykorzystywania naszej własności intelektualnej.

## **RU УКАЗАНИЯ:**

### **Другие языки:**

Данный список запасных частей также доступен на других языках. Вы найдете его на сайте [www.kaercher.com](http://www.kaercher.com) в разделе Service  
Маркировка номера детали, например, 75456380, соответствует номеру детали 7.545-638.0.

### **Указание количества:**

Количественные данные в списке запасных частей соответствуют числу компонентов, входящих в состав узлов.

### **Товар, продаваемый на метры:**

Запасные части, продающиеся на метры, необходимо обрезать до нужной длины. Число изделий указано в виде минимального объема заказа = 1м и их количество можно округлить до требуемого по мере необходимости.

### **Варианты исполнения/заводские номера:**

Если варианты исполнения или заводские номера указаны в списке запасных частей, то перед заказом необходимо проверить, какая деталь подходит для вашего устройства.

### **Лакированные детали:**

При заказе лакированных деталей, варианты расцветки которых не указаны в списке запасных частей, необходимо дополнительно указать номер цвета или необходимый для вас цвет.

### **Технические изменения:**

Мы оставляем за собой право на технические изменения, а также право на исключительное использование нашей интеллектуальной собственности.

## Table of contents

---

<b>Spare parts list B60 W Bp UL (5.971-886.0)</b> .....	<b>6</b>
10 Tank (0.166-284.0) .....	7
11 Tank (0.166-267.0) .....	8
12 Covering cap rear (0.166-285.0) .....	11
20 Frame (0.166-286.0) .....	13
30 Vacuum motor (0.166-287.0) .....	15
40 Control panel (0.165-811.0) .....	17
50 Tachograph (0.165-629.0) .....	19
60 Electronics "Bp" (0.165-756.0) .....	21
70 Suction bar lifting (0.165-634.0) .....	23
80 Suspension power brush (0.166-289.0) .....	25

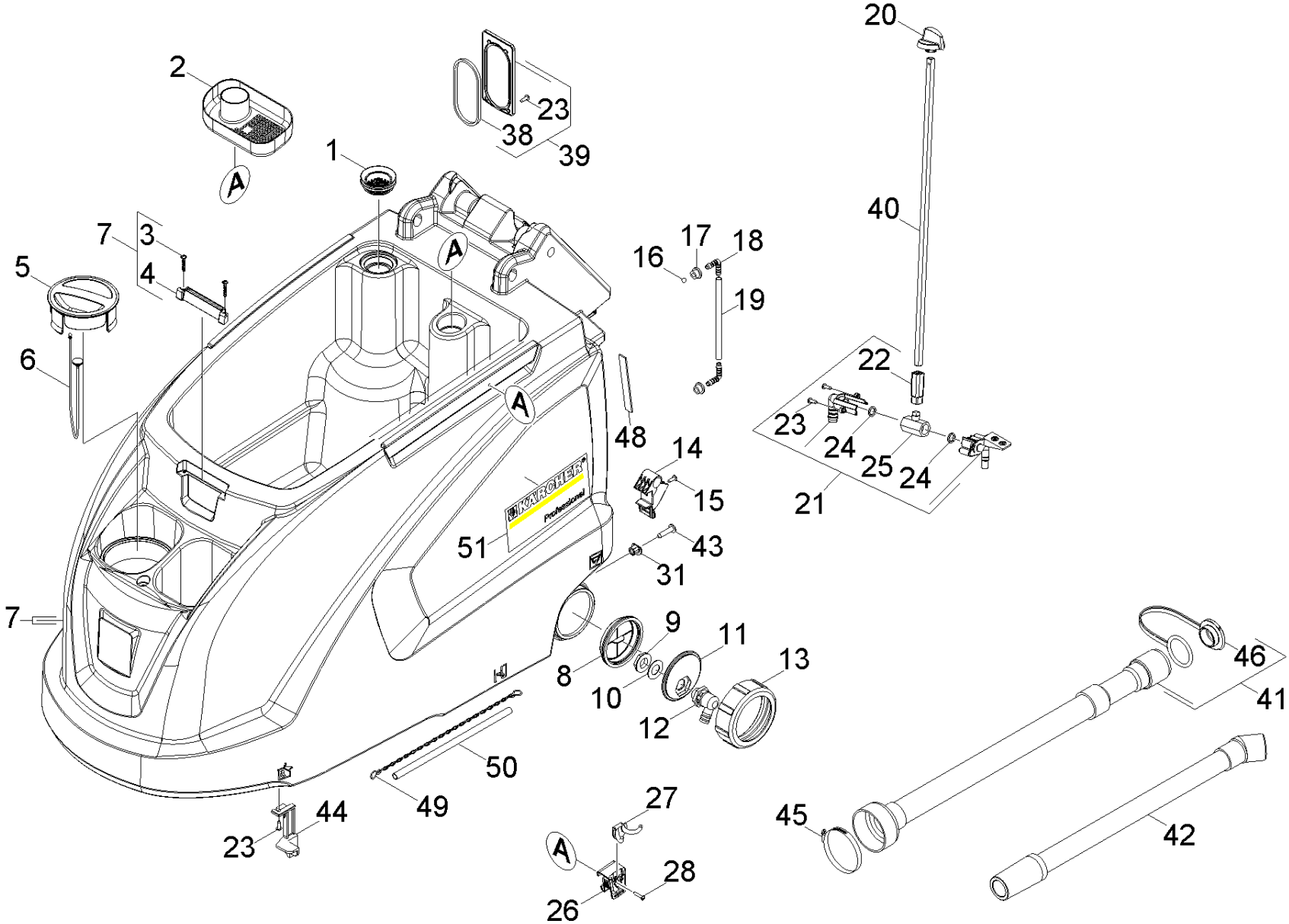
**Spare parts list B60 W Bp UL (5.971-886.0)**

Pos	Material #	Name	Qty.	Unit
10	0.166-284.0	Tank	1.000	ST
20	0.166-286.0	Frame	1.000	ST
30	0.166-287.0	Vacuum motor	1.000	ST
40	0.165-811.0	Control panel	1.000	ST
50	0.165-629.0	Tachograph	1.000	ST
60	0.165-756.0	Electronics "Bp"	1.000	ST
70	0.165-634.0	Suction bar lifting	1.000	ST
80	0.166-289.0	Suspension power brush	1.000	ST

**10 Tank (0.166-284.0)**

---

Pos	Material #	Name	Qty.	Unit
11	0.166-267.0	Tank	1.000	ST
12	0.166-285.0	Covering cap rear	1.000	ST



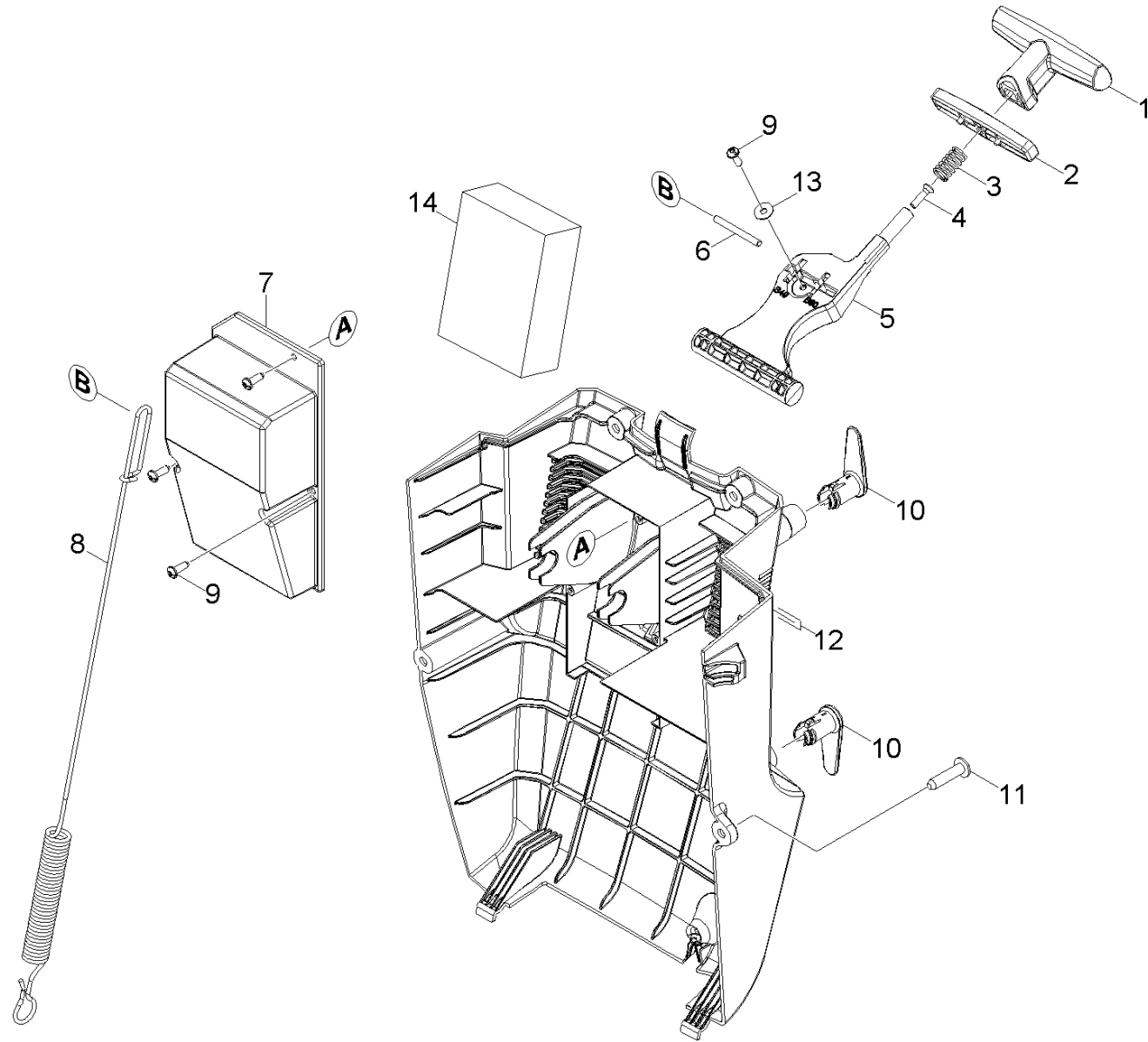


**11 Tank (0.166-267.0)**

ET/VT (spare/wear parts)	Pos	Material #	Name	Qty.	Unit	Footnote text
X-X	1	5.515-266.0	Joint ring fluffing strainer	1.000	ST	
	2	5.035-375.0	Tank bulk waste	1.000	ST	
X-X	3	7.303-086.0	Screw 5x30 -10.9-R2R (K-In6Rd)	2.000	ST	
	4	5.035-482.0	Add-on part tank cover	1.000	ST	
	5	5.035-380.0	Cover fresh water filler neck	1.000	ST	
	6	5.035-358.0	Mounting rope cover fresh water tank	1.000	ST	
	7	4.035-463.0	Tank replacement packaged B60	1.000	ST	
X	8	5.035-376.0	Filter discharge	1.000	ST	
	9	6.310-004.0	Hexagon nut G 1/2"	1.000	ST	
X-X	10	5.515-253.0	Seal D34	1.000	ST	
	11	5.035-342.0	Hose connection fresh water discharge	1.000	ST	
X-X	12	6.395-163.0	Angle bushing G1-2	1.000	ST	
	13	5.035-341.0	Cover fresh water tank discharge	1.000	ST	
	14	5.035-433.0	Adapter	2.000	ST	
	16	6.035-006.0	Sphere level indicator	1.000	ST	
	17	5.035-608.0	Wire protecting sleeve	2.000	ST	
X	18	6.391-913.0	Elbow nipple	2.000	ST	
	19	5.035-654.0	Silicon hose level indicator	1.000	ST	
	20	5.035-404.0	Handle	1.000	ST	
	21	4.035-426.0	Ball valve complete replacement	1.000	ST	
	22	5.035-459.0	Coupler piece ball valve	1.000	ST	
X-X	23	7.303-107.0	Screw 5x16 -10.9-P2R (K-In6Rd)	7.000	ST	
	24	5.035-408.0	Seal holder ball valve	2.000	ST	
X-X	25	6.413-099.0	Ball valve	1.000	ST	
	26	5.035-488.0	Adapter Homebase	1.000	ST	

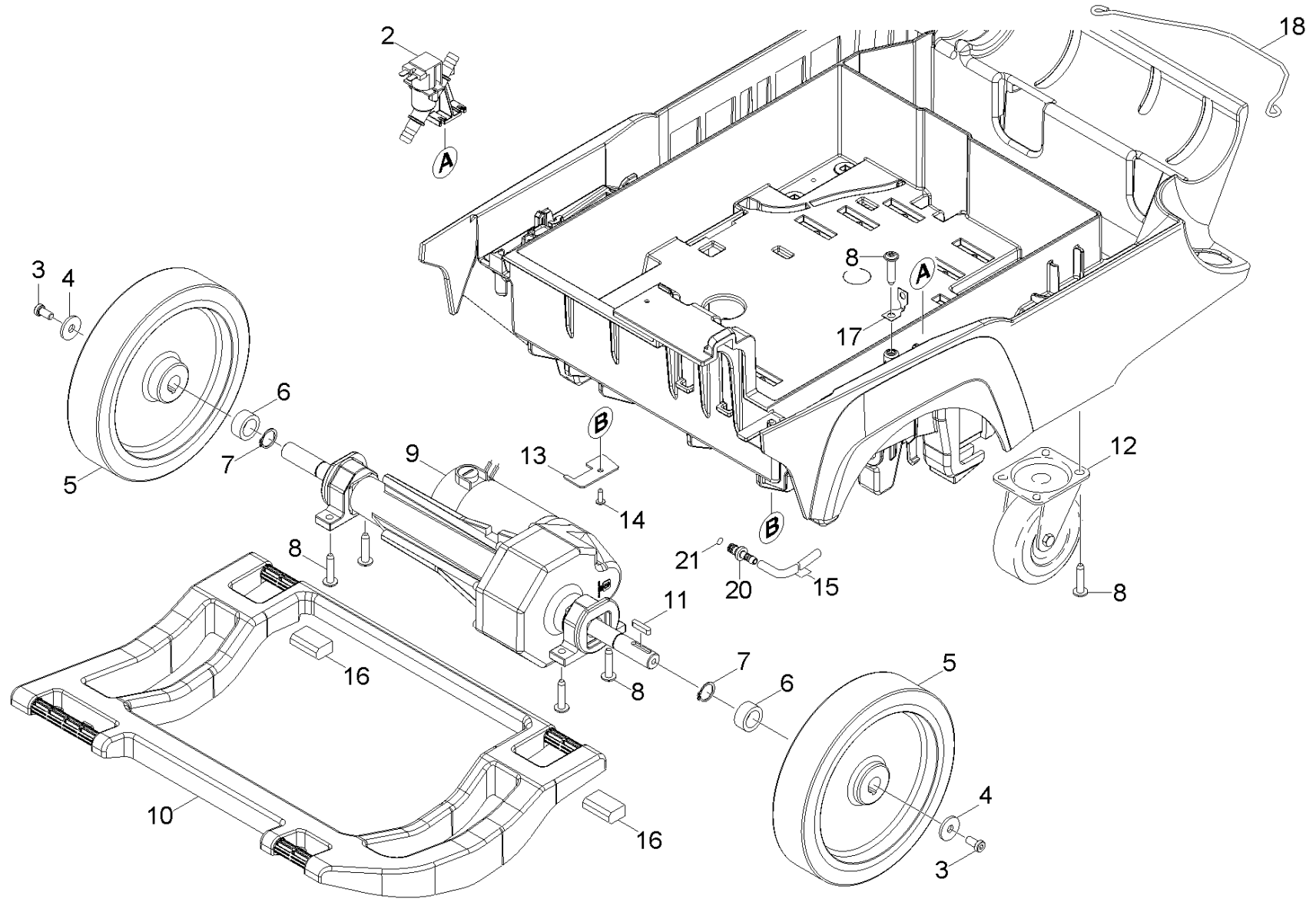
11 Tank (0.166-267.0)

ET/VT (spare/wear parts)	Pos	Material #	Name	Qty.	Unit	Footnote text
	27	6.980-077.0	Double hook	1.000	ST	
	28	6.303-200.0	Screw 5x25-IN6RD	1.000	ST	
	31	5.035-522.0	Sleeve	2.000	ST	
	38	5.035-418.0	Seal fixing plate	1.000	ST	
	39	4.035-370.0	Screen filling system	1.000	ST	
	40	5.035-623.0	Bar	1.000	ST	
	41	4.035-442.0	Drain hose with cover yellow	1.000	ST	STANDARD
	42	6.392-267.0	Suction hose DN32	1.000	ST	STANDARD
	43	6.303-315.0	Screw 8 x 35	2.000	ST	
	44	5.035-435.0	Tank locking part	1.000	ST	
X	45	6.388-767.0	Hose clip 70- 90	1.000	ST	
	46	5.035-723.0	Cover drain hose yellow	1.000	ST	STANDARD
	48	6.273-090.0	Sealing tape 13x3	1.000	M	TO ORDER AS CUT GOODS
	49	7.432-094.0	Chain G3x26 -1.4401 DIN 5685-1	1.000	ST	
	50	6.646-997.0	Hose silicon	1.000	M	TO ORDER AS CUT GOODS
X-X	51	5.392-988.0	Label side Professional 320 x 120	2.000	ST	



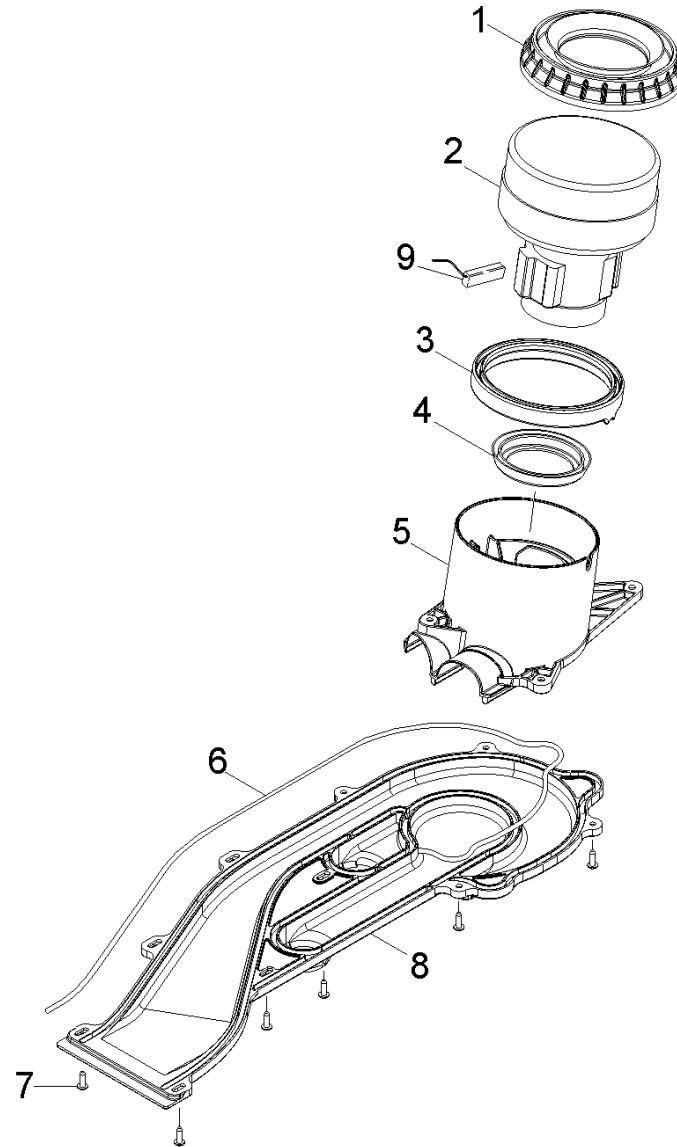
**12 Covering cap rear (0.166-285.0)**

ET/VT (spare/wear parts)	Pos	Material #	Name	Qty.	Unit
	1	5.035-443.0	Handhold adjustment	1.000	ST
	2	5.326-028.0	Button	1.000	ST
	3	5.332-481.0	Helical spring	1.000	ST
X-X	4	7.303-128.0	Countersunk screw 5x20 -10.9-R2R (In6Rd	1.000	ST
	5	5.035-445.0	Lever suction bar	1.000	ST
	6	5.035-453.0	Axle lever suction bar	1.000	ST
	7	5.035-446.0	Cover covering cap rear	1.000	ST
	8	5.035-423.0	Extension spring	1.000	ST
X-X	9	7.303-107.0	Screw 5x16 -10.9-P2R (K-In6Rd)	3.000	ST
X-X	10	5.044-661.0	Catch for cable	2.000	ST
	11	6.303-315.0	Screw 8 x 35	4.000	ST
	12	5.035-584.0	Covering cap electronics	1.000	ST
X-X	13	7.312-282.0	Washer 5 -A2 ISO 7093-1	2.000	ST
	14	5.673-189.0	Splash guard mat	2.000	ST



**20 Frame (0.166-286.0)**

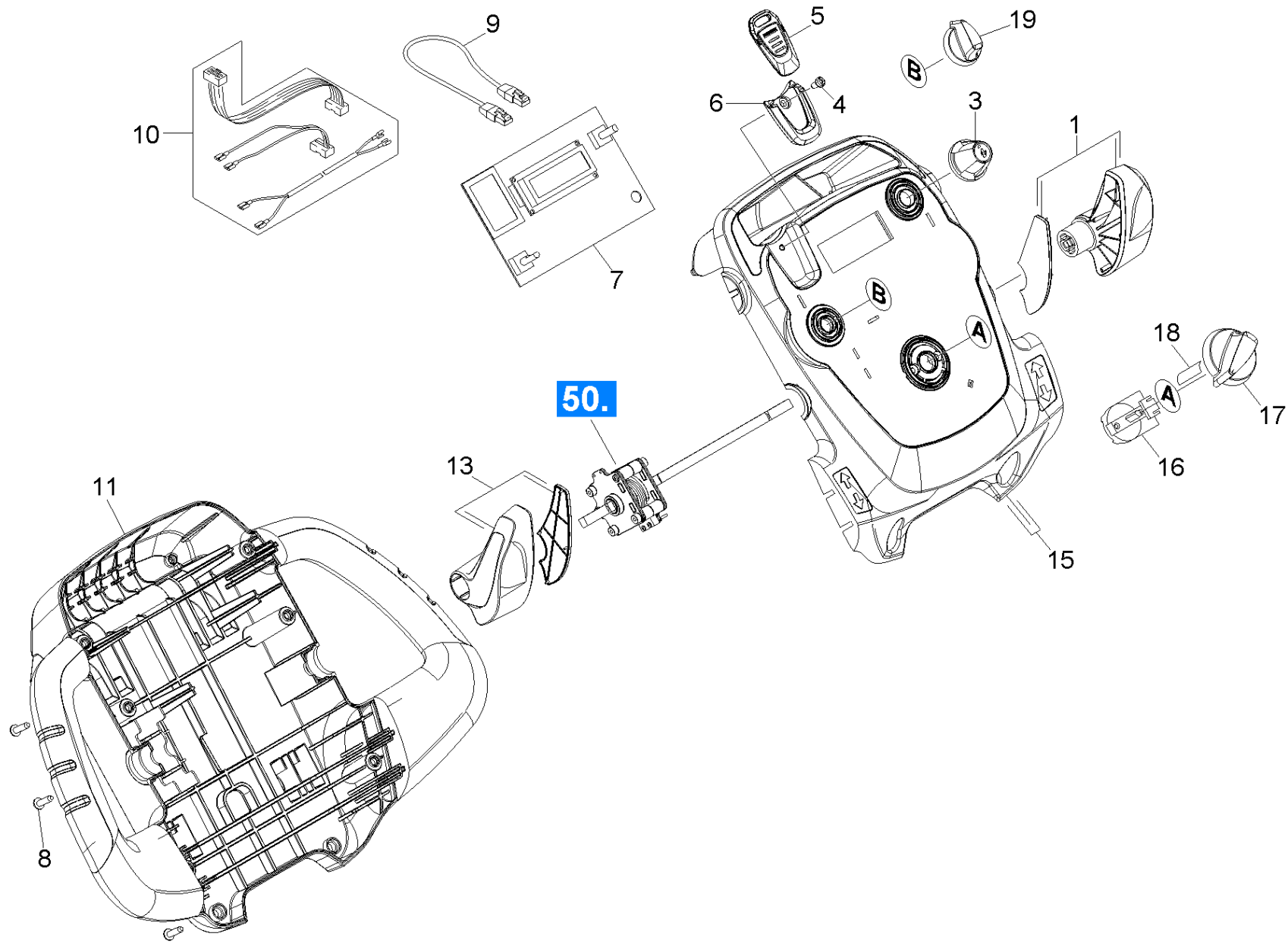
ET/VT (spare/wear parts)	Pos	Material #	Name	Qty.	Unit	var. information
X-X	2	6.472-997.0	Solenoid valve 24V	1.000	ST	24V
X-X	3	7.306-218.0	Screw M 8x16-A2-70 DIN 7984	2.000	ST	
X-X	4	7.312-268.0	Washer 8 -A2 ISO 7094	2.000	ST	
X	5	6.435-866.0	Wheel D 248	2.000	ST	
	6	5.111-316.0	Spacer sleeve wheel drive motor 13,5mm	2.000	ST	
X-X	7	7.343-007.0	Locking ring 20x1,2-FST-RF DIN 471	2.000	ST	
	8	6.303-315.0	Screw 8 x 35	13.000	ST	
	9	4.035-488.0	Wheel drive motor replacement	1.000	ST	24V / 750W
X	9	4.035-487.0	Wheel drive motor replacement	1.000	ST	24V / 550W
	10	5.035-577.0	Connecting rod B60-80	1.000	ST	
X-X	11	7.318-031.0	Parallel key 6x6x28 -C45R DIN 6885-1	2.000	ST	
X	12	6.435-809.0	Castor	2.000	ST	
	13	5.035-786.0	Plate tank locking part	1.000	ST	
X-X	14	7.303-107.0	Screw 5x16 -10.9-P2R (K-In6Rd)	1.000	ST	
X-X	15	6.390-892.0	Spiral hose NW12	1.000	M	
	16	5.035-809.0	Pad B60 EP	2.000	ST	
X-X	17	5.001-987.0	Plate bracket fuer Kette	1.000	ST	
	18	5.035-652.0	Wire spring	1.000	ST	
X-X	20	5.443-375.0	Hose stem	1.000	ST	
X-X	21	6.362-170.0	O-Ring seal 11,3 X 2,4-NBR 70	1.000	ST	



**30 Vacuum motor (0.166-287.0)**

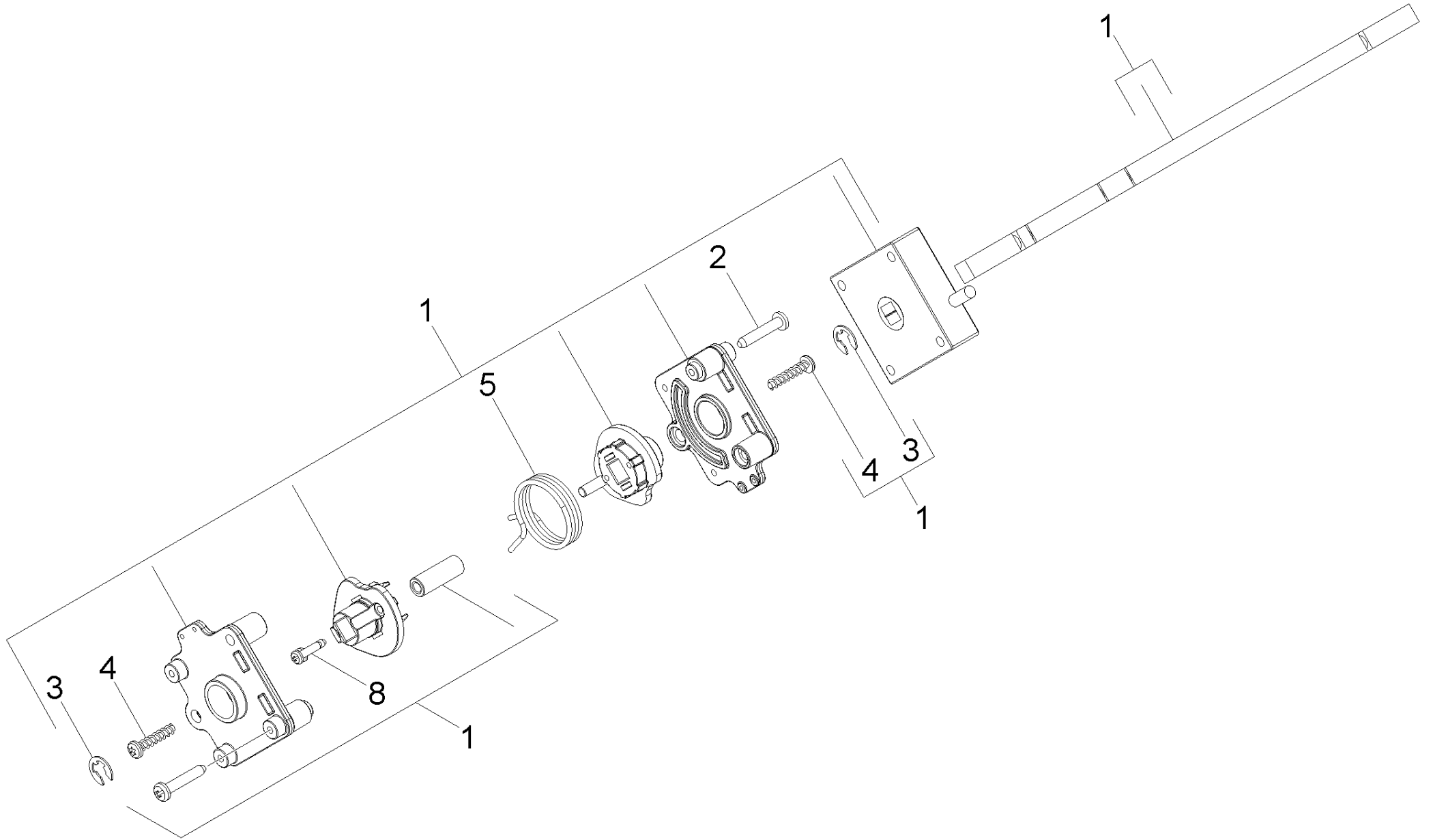
ET/VT (spare/wear parts)	Pos	Material #	Name	Qty.	Unit	Footnote text
	1	5.035-333.0	Bearing vacuum motor	1.000	ST	
X	2	4.035-484.0	Vacuum motor replacement	1.000	ST	
	3	5.035-332.0	Joint ring turbine	1.000	ST	
	4	5.363-395.0	Seal	1.000	ST	
	5	5.035-329.0	Air circulation bottom turbine	1.000	ST	
X-X	6	6.273-196.0	Seal string cellular rubber	1.000	M	TO ORDER AS CUT GOODS
X-X	7	7.303-107.0	Screw 5x16 -10.9-P2R (K-In6Rd)	8.000	ST	
	8	5.035-331.0	Air circulation above turbine	1.000	ST	
X	9	6.610-333.0	Set carbon brushes for replacement	1.000	ST	





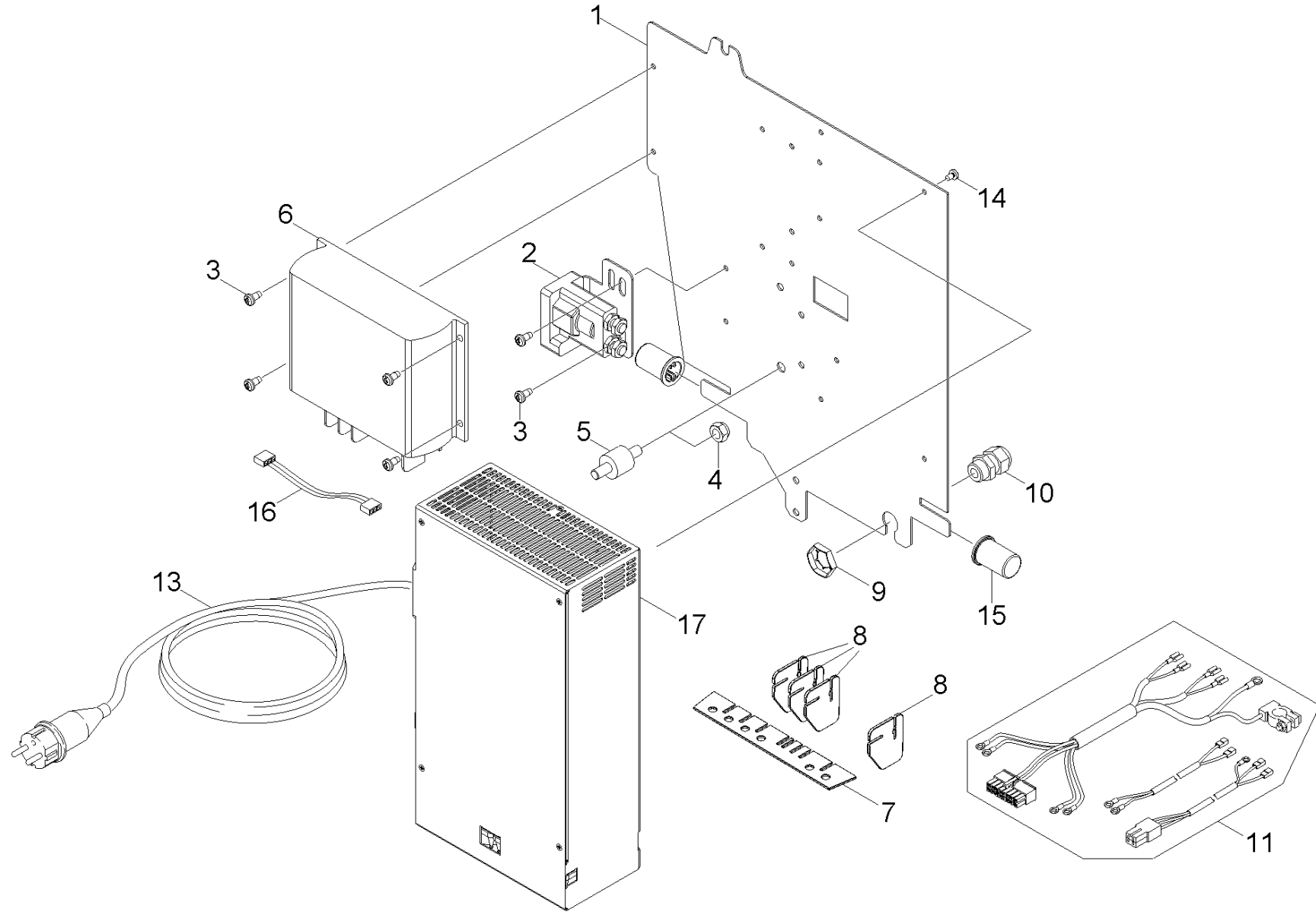
**40 Control panel (0.165-811.0)**

ET/VT (spare/wear parts)	Pos	Material #	Name	Qty.	Unit	Footnote text
	1	4.035-495.0	Tachograph right complete	1.000	ST	
X-X	3	5.321-750.0	Handhold info panel	1.000	ST	
X-X	4	7.303-116.0	Screw 4x12-A2-70 (IN6RD)	1.000	ST	
	5	5.035-348.0	Key grey KIK	1.000	ST	GREY
	5	4.035-408.0	Set key yellow KIK	1.000	ST	YELLOW
	5	5.035-337.0	Key red KIK	1.000	ST	RED
	6	5.035-343.0	Guide key	1.000	ST	
X	7	6.683-055.0	Circuit board W	1.000	ST	
	8	6.303-200.0	Screw 5x25-IN6RD	6.000	ST	
	9	6.649-933.0	Cable Patch	1.000	ST	
	10	4.035-431.0	Cable harness control panel replacement	1.000	ST	
	11	5.035-346.0	Housing bottom part control panel	1.000	ST	
	13	4.035-496.0	Tachograph left complete	1.000	ST	
	15	4.035-462.0	Covering cap control panel replacement B	1.000	ST	
X	16	4.035-415.0	Switch program selection replacement	1.000	ST	
X-X	17	5.321-738.0	Handhold operational concept	1.000	ST	
X-X	18	6.313-014.0	Spring element	1.000	ST	
	19	5.035-437.0	Rotary controller	1.000	ST	



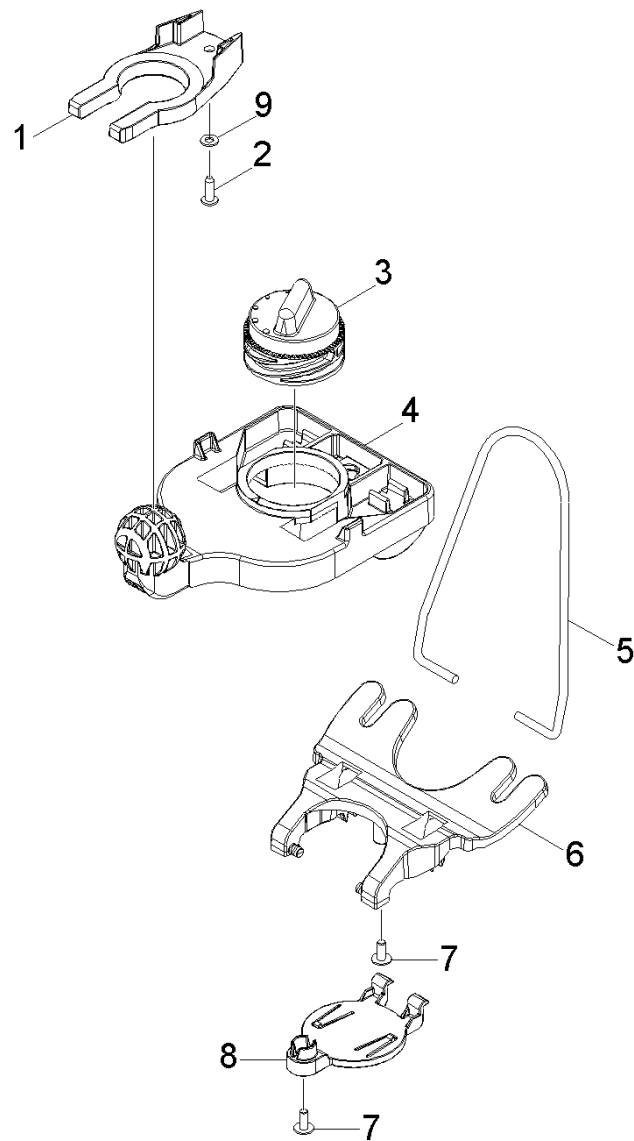
**50 Tachograph (0.165-629.0)**

ET/VT (spare/wear parts)	Pos	Material #	Name	Qty.	Unit
X	1	4.035-474.0	Tachograph set	1.000	ST
	2	7.303-096.0	Screw 4x22 -ST-10.9-R2R (IN6RD)	2.000	ST
X-X	3	7.343-201.0	Lock washer 6-FST-PHR DIN 6799	2.000	ST
X	4	7.306-076.0	Screw M 5x12-ST- 8.8-A2R (IN6RD)	2.000	ST
	5	6.330-441.0	Torsion spring tachograph	1.000	ST
	8	7.303-092.0	Screw 3x12 -10.9-R2R (K-In6Rd)	2.000	ST



60 Electronics "Bp" (0.165-756.0)

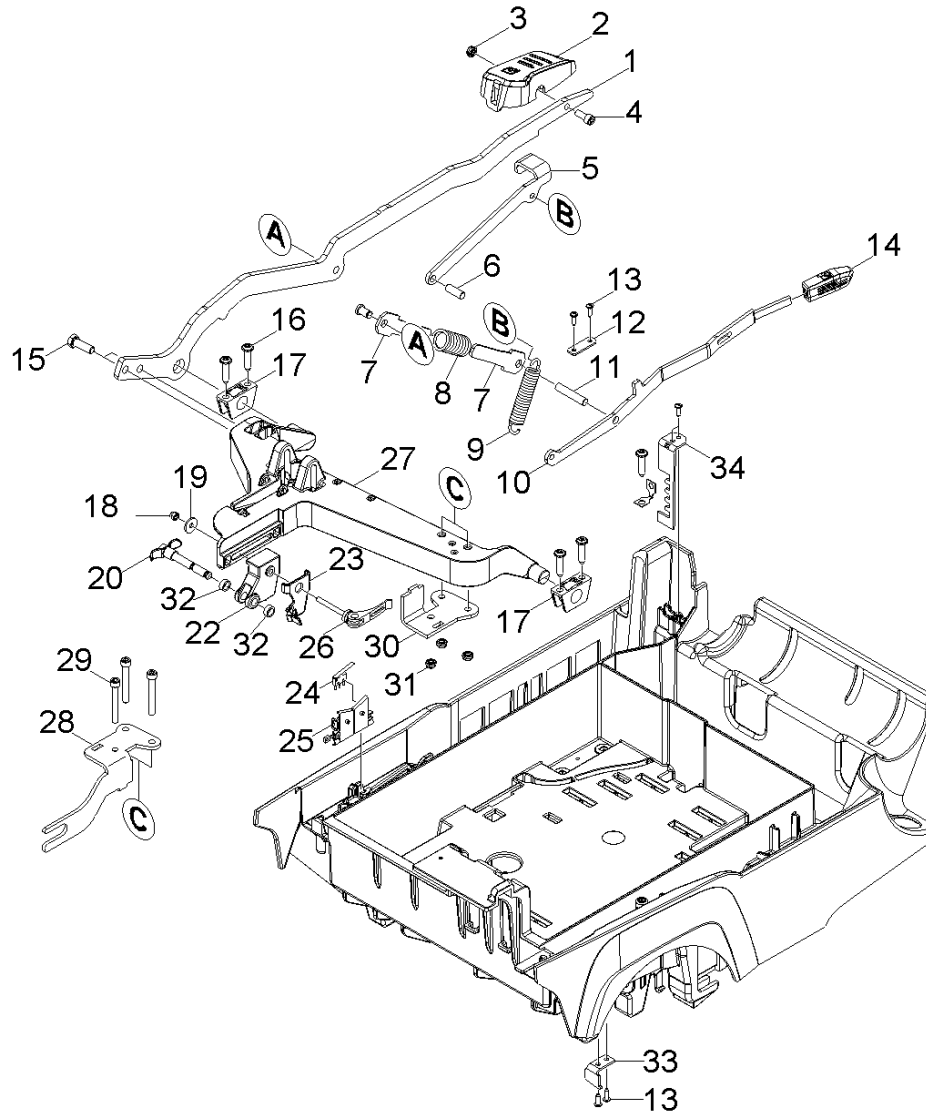
ET/VT (spare/wear parts)	Pos	Material #	Name	Qty.	Unit	var. information
	1	5.035-626.0	Plate electronics B60	1.000	ST	
X-X	2	6.633-389.0	Power relay	1.000	ST	
X-X	3	7.303-037.0	Screw M5x10 -St-P2R (In6Rd)	6.000	ST	
X-X	4	7.311-427.0	Hexagon nut M8 -04-A2E ISO 10511	1.000	ST	
	5	6.652-033.0	Isolator	1.000	ST	
	6	6.683-103.0	Control system B60 BP	1.000	ST	
	7	5.035-362.0	Moulded part plate electronics	1.000	ST	
	8	5.035-359.0	Moulded part plate electronics klein	4.000	ST	
	9	7.311-046.0	Lock nut M16-A2 DIN 7967	1.000	ST	
X	10	6.648-399.0	Cable gland black M16x1,5	1.000	ST	
	11	4.822-778.0	Cable harness B60 BP	1.000	ST	
	13	4.035-493.0	Power cable replacement	1.000	ST	*EU
	13	4.035-494.0	Power cable replacement *UL	1.000	ST	*US
	13	4.035-504.0	Power cable replacement *JP	1.000	ST	*JP
	14	7.306-236.0	Screw M4x6 -8.8-R2R (In6Rd)	4.000	ST	
	15	5.035-450.0	Bearing bush electronics	2.000	ST	
	16	6.645-554.0	Connecting cable control system battery	1.000	ST	
	17	6.683-105.0	Battery charger 100-240V	1.000	ST	



**70 Suction bar lifting (0.165-634.0)**

ET/VT (spare/wear parts)	Pos	Material #	Name	Qty.	Unit
	1	5.035-353.0	Fixing plate suction bar	1.000	ST
	2	7.303-109.0	Screw 5x25 -10.9-R2R (In6Rd)	1.000	ST
	3	5.035-356.0	Adjusting knob suction bar	1.000	ST
	4	5.035-354.0	Holder suction bar	1.000	ST
	5	5.035-382.0	Retaining bracket suction bar	1.000	ST
	6	5.035-355.0	Rocker suction bar	1.000	ST
X-X	7	6.304-121.0	Oval head screw M 5X12	2.000	ST
	8	5.035-436.0	Covering cap suction bar	1.000	ST
X-X	9	7.312-282.0	Washer 5 -A2 ISO 7093-1	1.000	ST





**80 Suspension power brush (0.166-289.0)**

ET/VT (spare/wear parts)	Pos	Material #	Name	Qty.	Unit	var. information
	1	5.035-575.0	Lever brush-head	1.000	ST	
	2	5.035-374.0	Pedal brush-head	1.000	ST	
X-X	3	7.311-432.0	Hexagon nut M 8-1.4305 ISO 10511	1.000	ST	
X-X	4	7.306-041.0	Cylinder head screw M8x20 -8.8-A2E ISO	1.000	ST	
	5	5.035-581.0	Limit plate lever	1.000	ST	B 60 W Bp
	6	5.035-630.0	Bolt D10x28	1.000	ST	
	7	5.035-640.0	Guide plate	2.000	ST	
	8	5.332-965.0	Pressure spring	1.000	ST	
	9	6.330-458.0	Extension spring	1.000	ST	
	10	5.035-580.0	Hand lever	1.000	ST	
	11	5.316-232.0	Bolt	1.000	ST	
	12	5.035-638.0	Bracket	1.000	ST	
X-X	13	7.303-107.0	Screw 5x16 -10.9-P2R (K-In6Rd)	6.000	ST	
	14	5.035-653.0	Handhold coating	1.000	ST	
X-X	15	7.304-417.0	Hexagonal head screw M10x30-8.8-A3E ISO	2.000	ST	
	16	6.303-315.0	Screw 8 x 35	4.000	ST	
	17	5.035-576.0	Bearing sleeve	2.000	ST	
X-X	18	7.311-512.0	Hexagon nut M 6-8-A2E ISO 7040	1.000	ST	
X-X	19	7.312-260.0	Washer 6 -100HV-A3E ISO 7094	1.000	ST	
	20	5.035-865.0	Handhold bolt brush-head	1.000	ST	
	22	5.035-585.0	Groove stone	1.000	ST	
	23	5.035-611.0	Spring clip	1.000	ST	
X-X	24	6.630-331.0	Micro switch	1.000	ST	
X-X	25	5.060-998.0	Housing micro switch	1.000	ST	
	26	6.035-011.0	Eccentric lever	1.000	ST	

**80 Suspension power brush (0.166-289.0)**

ET/VT (spare/wear parts)	Pos	Material #	Name	Qty.	Unit	var. information
	27	5.035-573.0	Suspension brush-head	1.000	ST	
	28	5.035-776.0	Sheet metal bracket brush-head EP	1.000	ST	B 60 W Ep
	29	7.306-047.0	Cylinder head screw M8x60 -8.8-A2E ISO4	3.000	ST	
	30	5.035-777.0	Sheet steel angle brush-head EP	1.000	ST	B 60 W Ep
X-X	31	7.311-427.0	Hexagon nut M8 -04-A2E ISO 10511	3.000	ST	
	32	5.035-810.0	Sleeve	2.000	ST	
	33	5.035-361.0	Sheet metal component	1.000	ST	B 60 W Bp
	34	5.035-582.0	Locking plate	1.000	ST	B 60 W Ep