

Spare parts list
(5.971-223.0) Spare parts list KM 90/60 R Batterie

DE HINWEISE

Weitere Sprachen:

Diese Ersatzteilliste ist in weiteren Sprachen erhältlich. Sie erhalten diese unter www.kaercher.com im Bereich Service.
Die Schreibweise der Teilenummer, z.B. 75456380, entspricht der Teilenummer 7.545-638.0.

Mengenangaben:

Die Mengenangaben in der Ersatzteilliste entsprechen den in der Baugruppe verbauten Stückzahlen der Bauteile.

Meterware:

Ersatzteile welche als Meterware geliefert werden sind auf Einbaulänge selbst zu kürzen. Die Stückzahlen sind als Mindestbestellmenge =1m angegeben und müssen je nach Bedarf auf weitere volle Meterzahlen erhöht werden.

Versionen/ Werknummern:

Sind Versionen oder Werknummern in der Ersatzteilliste angegeben, ist anhand dieser vor Bestellung zu prüfen, welches Bauteil für ihr Gerät verwendet werden muss.

Lackierte Teile:

Bei Bestellungen von lackierten Teilen welche in der Ersatzteilliste nicht in verschiedenen Farben ausgewiesen sind, ist zusätzlich die Farbnummer oder Farbe mit anzugeben.

Technische Änderungen:

Technische Änderungen sowie das Recht der ausschließlichen Auswertung unseres geistigen Eigentums behalten wir uns vor.

EN INSTRUCTIONS

Other languages:

This list of spare parts is also available in other languages. You can get this list from www.kaercher.com in the Service division.
The designation of the part number e.g. 75456380 is equal to 7.545-638.0.

Quantity details:

The quantity details in the spare parts list correspond to the number of pieces of the component installed in the assembly group.

Piece goods:

Spare parts that are sold as piece goods are to be cut to the desired length. The quantities have been indicated as minimum order quantity =1m and must be rounded off to the full meter figure depending on your requirements.

Version/ Plant numbers:

If version or plant numbers are mentioned in the spare parts list, then use the same to check before ordering which spare part needs to be used for your appliance.

Painted parts:

While ordering painted parts that are not mentioned in the spare parts list in their colour variations, please mention the colour number or the colour you require.

Technical changes:

We reserve the right to make technical changes as well as the right to exclusive use of our intellectual property.

FR REMARQUES

Autres langues:

Cette liste de pièces de rechange est disponible en autres langues. Cela est disponible sous www.kaercher.com dans le menu Service.
La désignation du numéro de pièce, par ex. 75456380, correspond au numéro de pièce 7.545-638.0.

Indications de quantité:

Les indications de quantité dans la liste de pièces de rechange correspondre aux nombres de pièces des composant utilisées dans la construction.

Matériel au mètre:

Les pièces de rechange qui sont livrées au mètre doivent être raccourcies à longueur souhaitée par l'acheteur même. Les nombres des pièces sont indiquées en quantité de commande minimale = 1m et doivent être augmentés selon le besoin à une chiffre de mètre complète.

Versions/ Numéros d'usine:

Lorsqu'il sont indiquées des versions ou des numéros d'usine dans la liste de pièces de rechange, vous devez vérifier que composant doit être utilisé pour votre appareil.

Pièces laquées:

Pour commander des pièces laquées, où les différentes couleurs ne sont pas indiquées dans la liste des pièces de rechange, vous devez indiquer en plus le numéro de la couleur ou seulement la couleur.

Modifications techniques:

Nous nous réservons la possibilité des modifications techniques ainsi le droit d'exploitation exclusive de notre propriété intellectuelle.

IT AVVERTENZE

Altre lingue:

Il presente elenco di parti di ricambio è disponibile sul nostro sito Web anche in altre lingue: sotto www.kaercher.com alla voce "Service".

L'indicazione del codice pezzo, ad es. 75456380, corrisponde al codice pezzo 7.545-638.0

Indicazioni di quantità:

Le indicazioni di quantità riportate dall'elenco "parti di ricambio" corrispondono al numero delle singole componenti contenute nella rispettiva unità.

Merce a metro:

Le parti di ricambio fornite come "merce a metro" devono venire in seguito accorciate alla lunghezza necessaria per il montaggio. La quantità unitaria è indicata come "quantità minima di ordinazione = 1m" e deve all'occorrenza venire moltiplicata per il numero intero di metri necessari.

Versioni / Numeri di fabbricazione:

Quando l'elenco "parti di ricambio" riporta diverse versioni o numeri di fabbricazione, confrontare la versione o il numero di fabbricazione del ricambio desiderato con quelle/i presenti nell'elenco e indicarla/o al momento dell'ordinazione.

Parti di ricambio verniciate:

Nel caso di ricambi verniciati, se l'elenco parti di ricambio non ne riporta espressamente i diversi colori, al momento dell'ordinazione è necessario indicare anche il colore o il numero del colore desiderato.

Modifiche tecniche:

Ci riserviamo il diritto di apportare modifiche tecniche così come il diritto di utilizzo esclusivo della nostra proprietà intellettuale.

ES INDICACIONES

Otros idiomas:

La lista de piezas de repuesto se puede adquirir en otros idiomas. La puede adquirir en www.kaercher.com en el área de servicios.

La notación de los números de las piezas, p.ej. 75456380 corresponde al número de pieza 7.545-638.0.

Cantidades:

Las indicaciones de cantidades de la lista de piezas de repuesto corresponden al número de piezas montadas en el componente.

Mercancía por metros:

Las piezas de repuesto que se suministran por metros se pueden cortar al largo deseado. La unidad mínima de pedido es de = 1 m y el número de metros completos se puede aumentar según necesidad.

Versiones/números de fábrica:

Si se indica la versión o número de fábrica en la lista de piezas de repuesto, se debe comprobar en ella la pieza a usar para su aparato antes de realizar el pedido.

Piezas lacadas:

Al realizar pedidos de piezas lacadas que no estén indicadas en los diferentes colores en la lista de piezas de repuesto, se debe indicar también la referencia del color o el color.

Modificaciones técnicas:

Reservados los derechos de realizar modificaciones técnicas y aprovechar nuestra propiedad intelectual.

PL WSKAZÓWKI

Pozostałe języki:

Ta lista części zamiennych jest dostępna w także w innych językach. Mogą ją Państwo pobrać ze strony www.kaercher.com w dziale Serwis.

Sposób zapisywania numeru części, np. 75456380, odpowiada numerowi części 7.545-638.0.

Dane ilości:

Dane ilości podane w liście części zamiennych odpowiadają liczbie sztuk podzespołów tworzących dany moduł.

Towar sprzedawany na metry:

Części zamienne dostarczane jako towar sprzedawany na metry po zamontowaniu należy samodzielnie skrócić do potrzebnej długości. Liczba sztuk podana jest jako minimalna ilość zamówienia = 1m i w zależności od potrzeb zwiększa się ją o kolejne pełne metry.

Wersje/ Numer zakładu:

Jeżeli w liście części zamiennych podane są wersje lub numery zakładu, przed zamówieniem na ich podstawie należy sprawdzić, który podzespół stosuje się w Państwa urządzeniu.

Części lakierowane:

W przypadku zamówień części lakierowanych, które w liście części zamiennych nie podano w wielu kolorach, należy dodatkowo zaznaczyć nr koloru lub kolor.

Zmiany techniczne:

Zastrzegamy sobie prawo do zmian technicznych oraz wyłącznego wykorzystywania naszej własności intelektualnej.

RU УКАЗАНИЯ:

Другие языки:

Данный список запасных частей также доступен на других языках. Вы найдете его на сайте www.kaercher.com в разделе Service
Маркировка номера детали, например, 75456380, соответствует номеру детали 7.545-638.0.

Указание количества:

Количественные данные в списке запасных частей соответствуют числу компонентов, входящих в состав узлов.

Товар, продаваемый на метры:

Запасные части, продающиеся на метры, необходимо обрезать до нужной длины. Число изделий указано в виде минимального объема заказа = 1м и их количество можно округлить до требуемого по мере необходимости.

Варианты исполнения/заводские номера:

Если варианты исполнения или заводские номера указаны в списке запасных частей, то перед заказом необходимо проверить, какая деталь подходит для вашего устройства.

Лакированные детали:

При заказе лакированных деталей, варианты расцветки которых не указаны в списке запасных частей, необходимо дополнительно указать номер цвета или необходимый для вас цвет.

Технические изменения:

Мы оставляем за собой право на технические изменения, а также право на исключительное использование нашей интеллектуальной собственности.

Table of contents

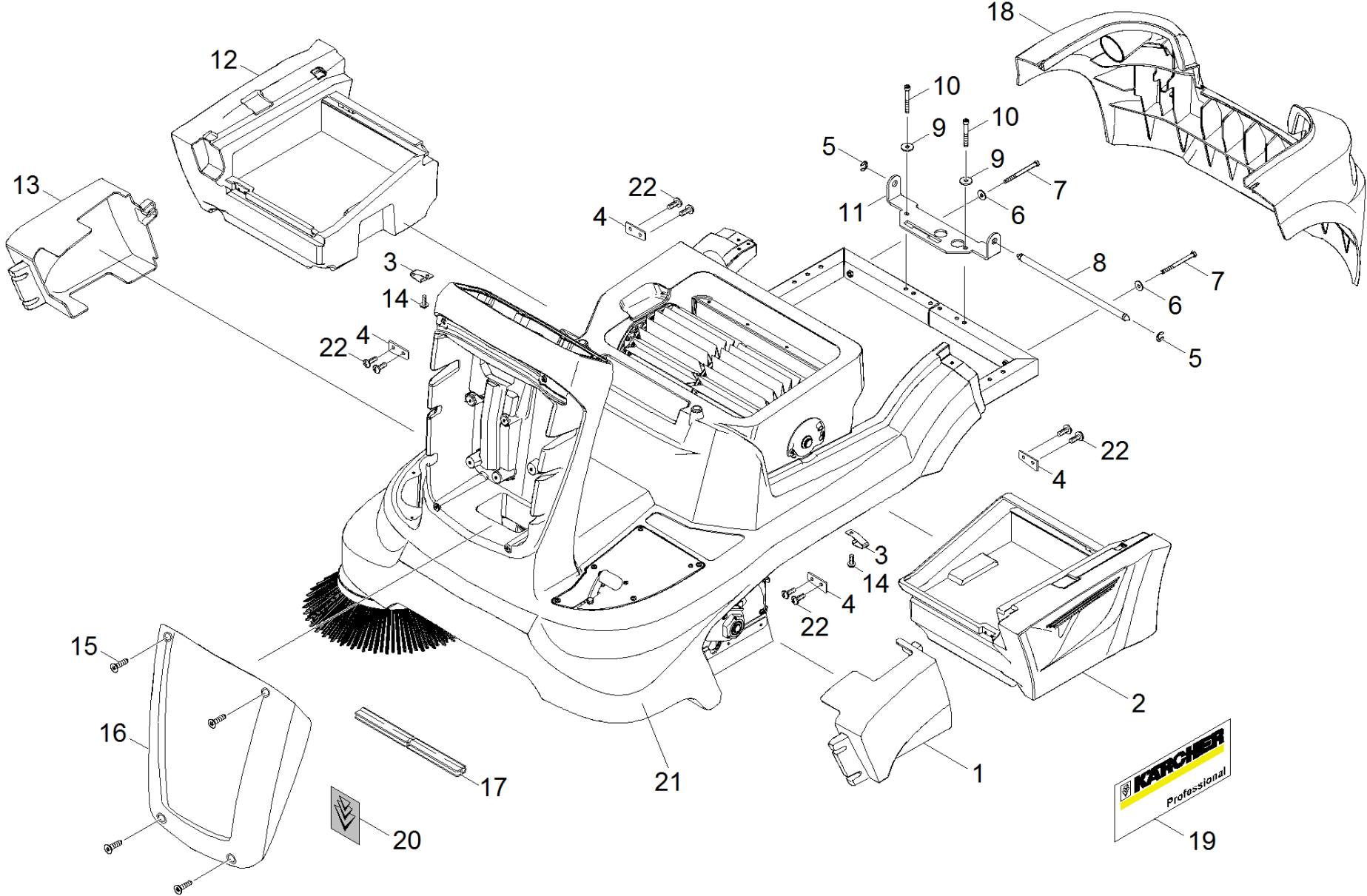
Spare parts list KM 90/60 R Batterie (5.971-223.0)	6
10 Basic machinery (0.209-674.0).....	7
11 Basic machinery individual parts (0.210-750.0).....	8
12 Cover battery (0.209-676.0).....	10
20 Steering battery (0.208-924.0).....	13
30 Pedal (0.209-671.0).....	16
31 Pedal bulk waste flap (0.209-669.0).....	17
32 Pedal battery (0.209-672.0).....	20
40 Filter box (0.209-673.0).....	22
50 Sweep roller chest (0.209-677.0).....	25
60 Control panel (0.209-682.0).....	30
70 Transmission battery (0.208-939.0).....	32
80 Battery box completely (0.209-679.0).....	35
90 Side broom right (0.208-821.0).....	37
100 Electronics battery (0.208-936.0).....	40
110 Electronics battery (0.208-941.0).....	42
120 Accessories (0.208-825.0).....	44
121 Add-on kit side broom left (0.210-751.0).....	45
122 ABS revolving signal light (0.208-824.0).....	48
123 ABS carpet sweep (0.209-309.0).....	50
124 ABS tire equipment breakdown surely (0.209-414.0).....	53
130 Special tools (0.120-635.0).....	55
200 Tool measuring instrument current AC/DC, (0.120-008.0).....	56
210 Tool hydrometer acid (0.120-087.0).....	58
220 Tool oil pump extraction system -12V (0.120-139.0).....	60

Spare parts list KM 90/60 R Batterie (5.971-223.0)

Pos	Material #	Name	Qty.	Unit	var. information
10	0.209-674.0	Basic machinery	1.000	ST	
20	0.208-924.0	Steering battery	1.000	ST	
30	0.209-671.0	Pedal	1.000	ST	
40	0.209-673.0	Filter box	1.000	ST	
50	0.209-677.0	Sweep roller chest	1.000	ST	
60	0.209-682.0	Control panel	1.000	ST	
70	0.208-939.0	Transmission battery	1.000	ST	
80	0.209-679.0	Battery box completely	1.000	ST	
90	0.208-821.0	Side broom right	1.000	ST	
100	0.208-936.0	Electronics battery	1.000	ST	1.047-201.0
110	0.208-941.0	Electronics battery	1.000	ST	1.047-202/-206
120	0.208-825.0	Accessories	1.000	ST	
130	0.120-635.0	Special tools	1.000	ST	

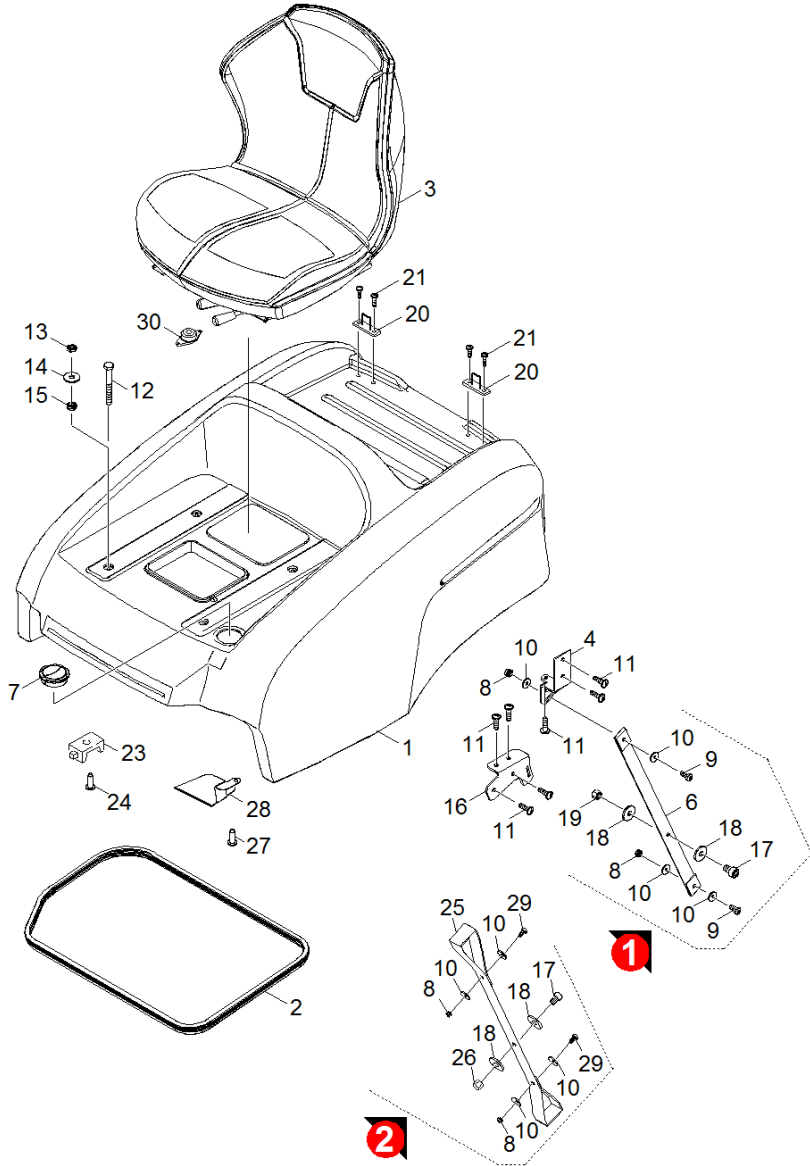
10 Basic machinery (0.209-674.0)

Pos	Material #	Name	Qty.	Unit
11	0.210-750.0	Basic machinery individual parts	1.000	ST
12	0.209-676.0	Cover battery	1.000	ST



11 Basic machinery individual parts (0.210-750.0)

ET/VT (spare/wear parts)	Pos	Material #	Name	Qty.	Unit	Footnote text
	1	5.033-213.0	Covering side left	1.000	ST	
	2	5.033-165.0	Sweep tank left KM 90/60 R	1.000	ST	
	3	5.337-031.0	Plate spring stop	2.000	ST	
	4	5.009-418.0	Plate locking bar sweep tank	4.000	ST	
	5	7.343-306.0	Lock washer 12-St-A2E DIN 6799	2.000	ST	
X-X	6	7.312-289.0	Washer 8 -A2 ISO 7093-1	2.000	ST	
X-X	7	7.304-033.0	Hexagonal head screw M 8X100-A4-70 ISO 4	2.000	ST	
	8	5.317-230.0	Bearing pin cover KM90/60R	1.000	ST	
	9	7.312-261.0	Washer 8 -100HV-A3E ISO 7094	2.000	ST	
	10	7.306-151.0	Cylinder head screw M8x65 -8.8-A2E ISO4	2.000	ST	
	11	5.061-627.0	Sheet metal component hinge cover	1.000	ST	
	12	5.033-166.0	Sweep tank right KM 90/60 R	1.000	ST	
	13	5.033-214.0	Covering side right	1.000	ST	
	14	7.303-030.0	Screw M4x8 -St-P2R (In6Rd)	4.000	ST	
X-X	15	6.304-121.0	Oval head screw M 5X12	4.000	ST	
	16	5.064-262.0	Cover front panel KM 90/60 R	1.000	ST	
	17	6.273-308.0	Profile gasket	1.000	M	TO ORDER AS CUT GOODS
	18	5.033-229.0	Covering rear KM 90/60 R BAT	1.000	ST	
	19	5.392-922.0	Label side 280 x 108	1.000	ST	
X-X	20	5.392-907.0	Label signet gel 102 x 113	1.000	ST	
	21	5.033-163.0	Front component filter box KM 90/60 R	1.000	ST	
	22	6.303-125.0	Screw 5x20-Sonder In6Rd+Spitze	8.000	ST	

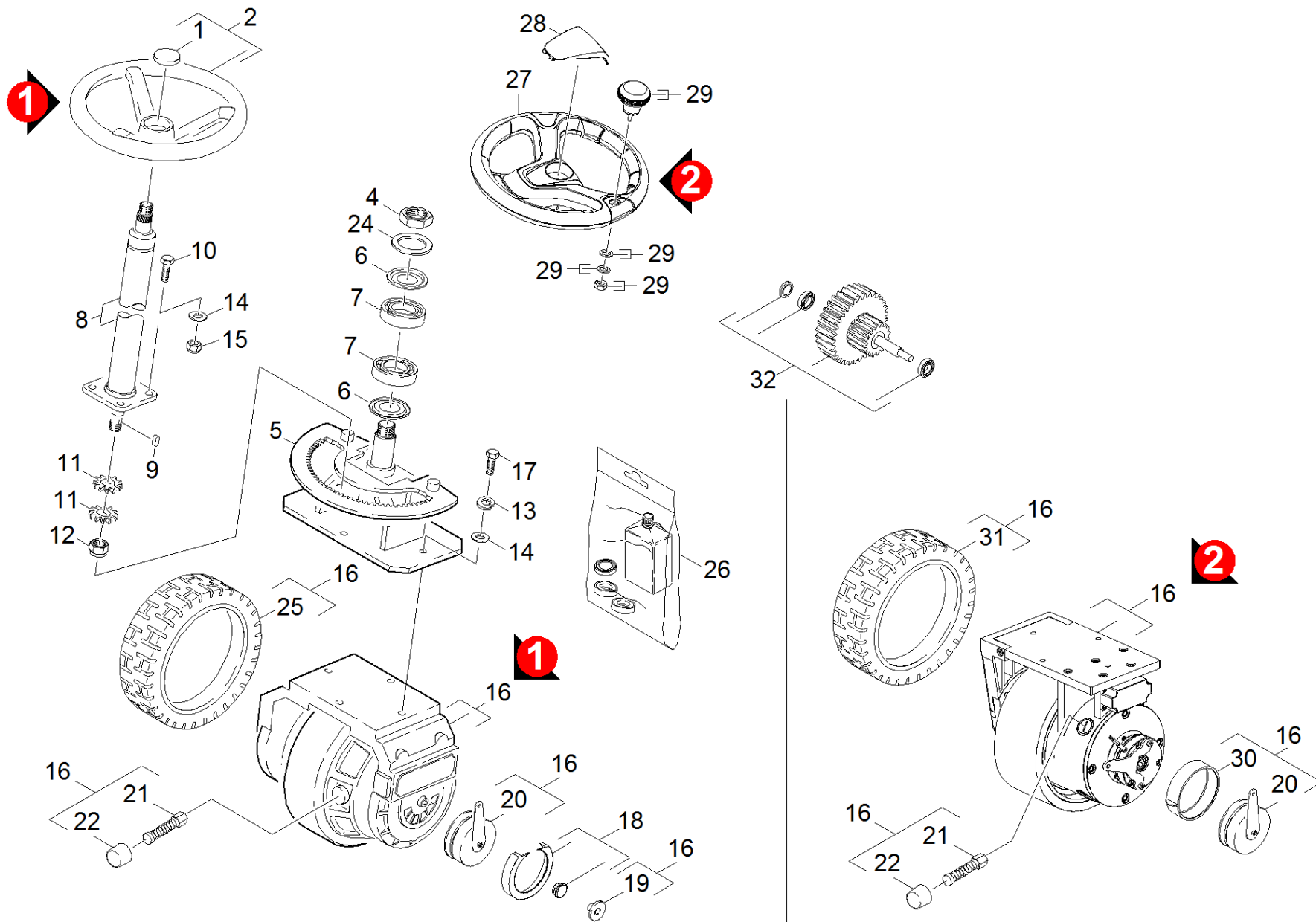


12 Cover battery (0.209-676.0)

ET/VT (spare/wear parts)	Pos	Material #	Name	Qty.	Unit
	1	5.069-305.0	Cover battery	1.000	ST
X-X	2	6.366-043.0	Sealing profile	1.000	M
	3	6.394-729.0	Seat COBO PS48	1.000	ST
	4	5.061-631.0	Sheet metal component snap in cover rod	1.000	ST
	6	6.373-935.0	Belt strap cover support	1.000	ST
	7	6.415-896.0	Air flap	1.000	ST
X-X	8	7.311-421.0	Hexagon nut M 5-04-A2E ISO 10511	2.000	ST
X	9	7.306-443.0	Cylinder head screw M5x12-4.8-A2E ISO 1	2.000	ST
X	10	7.312-264.0	Washer 5-100HV-A3E ISO 7094	4.000	ST
X-X	11	7.303-112.0	Screw 6x20 -10.9-R2R (In6Rd)	7.000	ST
	12	7.304-402.0	Hexagonal head screw M8x65-8.8-A2E ISO	4.000	ST
X-X	13	7.311-224.0	Hexagon nut M 8-04-A2E ISO 4035	4.000	ST
	14	7.312-277.0	Washer 8-200HV-A2E ISO7093-1	4.000	ST
X-X	15	7.311-427.0	Hexagon nut M8 -04-A2E ISO 10511	4.000	ST
	16	5.061-730.0	Sheet metal component holder cover	1.000	ST
X-X	17	7.306-119.0	Cylinder head screw M8x12 -A2-70 ISO 47	1.000	ST
	18	7.312-261.0	Washer 8 -100HV-A3E ISO 7094	2.000	ST
	19	7.311-337.0	Cap nut M 8-5-A2J DIN 917	1.000	ST
X	20	6.371-026.0	Belt mounting eye	4.000	ST
X-X	21	7.303-116.0	Screw 4x12-A2-70 (IN6RD)	8.000	ST
	23	6.648-602.0	Holder	3.000	ST
X-X	24	7.303-037.0	Screw M5x10 -St-P2R (In6Rd)	3.000	ST
	25	6.373-969.0	Belt strap cover support	1.000	ST
	26	7.311-337.0	Cap nut M 8-5-A2J DIN 917	1.000	ST
	27	6.303-125.0	Screw 5x20-Sonder In6Rd+Spitze	23.000	ST

12 Cover battery (0.209-676.0)

ET/VT (spare/wear parts)	Pos	Material #	Name	Qty.	Unit
	28	5.062-053.0	Sheet metal component water shield	1.000	ST
X	29	7.306-076.0	Screw M 5x12-ST- 8.8-A2R (IN6RD)	1.000	ST
X	30	6.630-495.0	Contact switch seat	1.000	ST



20 Steering battery (0.208-924.0)

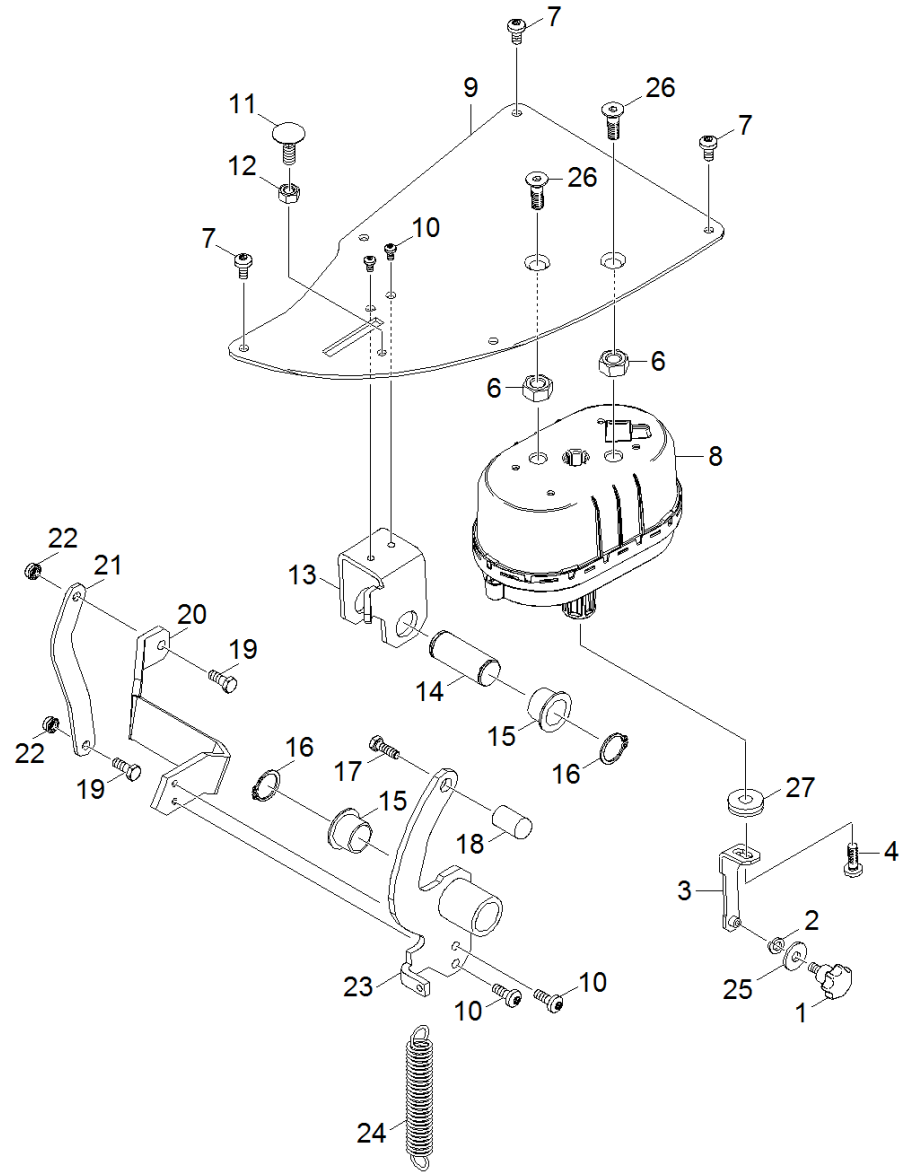
ET/VT (spare/wear parts)	Pos	Material #	Name	Qty.	Unit	var. information
	1	6.368-217.0	Cap	1.000	ST	
	2	6.435-253.0	Steering wheel	1.000	ST	VERSION 1
X-X	4	7.311-122.0	Hexagon nut M24X1,5-22H-A2E DIN 936	1.000	ST	
	5	4.520-164.0	Wheel fork complete Bp	1.000	ST	
X-X	6	6.401-263.0	Slip ring	2.000	ST	
	7	6.401-260.0	Angular contact ball bearing	2.000	ST	
	8	6.439-201.0	Steering KM 90/60 R	1.000	ST	
X-X	9	7.318-090.0	Parallel key A5x5x10-C45R DIN 6885	1.000	ST	
X-X	10	7.304-414.0	Hexagonal head screw M10x20-8.8-A3E ISO	4.000	ST	
X-X	11	5.352-000.0	Gear wheel	2.000	ST	
X	12	7.311-059.0	Hexagon nut M16x1,5 -8-A2E ISO10512	1.000	ST	
X-X	13	7.313-030.0	Spring washer A10-FST DIN 128	4.000	ST	
X-X	14	7.312-005.0	Washer 10-200HV-A3E ISO 7090	4.000	ST	
X-X	15	7.311-423.0	Hexagon nut M10 -04-A2E ISO 10511	4.000	ST	
	16	6.613-315.0	Wheel drive motor	1.000	ST	KC 801-DO1A
Position text: Version 1						
X-X	16	6.613-206.0	Wheel drive motor 600W	1.000	ST	MOTORUOTA 250/750 V24
Position text: Version 2						
	17	7.304-415.0	Hexagonal head screw M10x25-8.8-A3E ISO	4.000	ST	
X	18	4.040-645.0	Set dust protection KM 100/100	1.000	ST	
X-X	19	6.394-391.0	Coupler brake BR/BD TRIKE	1.000	ST	
X-X	20	4.467-002.0	Brake adjustable complete	1.000	ST	
X-X	21	6.610-211.0	Carbon brush set	1.000	ST	
Position text: Version 1						
X-X	21	6.613-231.0	Carbon brush set	1.000	ST	
Position text: Version 2						

20 Steering battery (0.208-924.0)

ET/VT (spare/wear parts)	Pos	Material #	Name	Qty.	Unit	var. information
X-X	22	6.961-901.0	Cap with bayonet	1.000	ST	
Position text: Version 1						
X-X	22	6.961-924.0	Cover closure	1.000	ST	
Position text: Version 2						
X	24	7.312-010.0	Washer 24 -200HV-A3E ISO 7090	1.000	ST	
X-X	25	6.435-402.0	Tire Trike	1.000	ST	
Position text: Version 1						
	26	4.641-045.0	Spare part set bearing	1.000	ST	
	27	6.435-795.0	Steering wheel	1.000	ST	VERSION 2
X-X	28	6.640-353.0	Cap steering wheel KÄRCHER	1.000	ST	VERSION 2
X-X	29	6.640-354.0	Handle	1.000	ST	VERSION 2
X-X	30	6.467-039.0	Retrofit kit brake	1.000	ST	
Position text: Version 2						
X-X	31	6.435-854.0	Wheel drive wheel motor	1.000	ST	
Position text: Version 2						
	32	6.550-040.0	Set armature shaft fuer Fahrmotor	1.000	ST	

30 Pedal (0.209-671.0)

Pos	Material #	Name	Qty.	Unit
31	0.209-669.0	Pedal bulk waste flap	1.000	ST
32	0.209-672.0	Pedal battery	1.000	ST

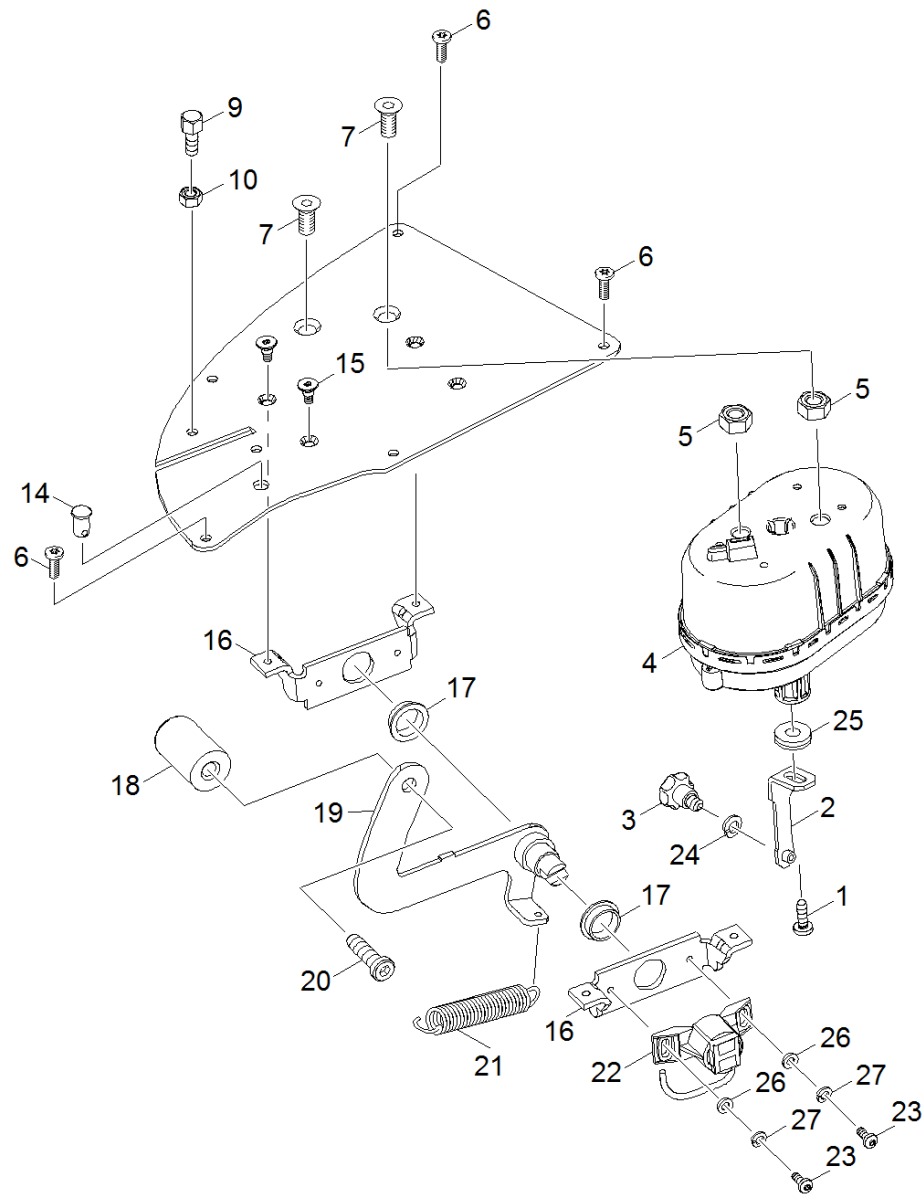


31 Pedal bulk waste flap (0.209-669.0)

ET/VT (spare/wear parts)	Pos	Material #	Name	Qty.	Unit
	1	6.321-196.0	Star grip M5x10	1.000	ST
	2	7.313-002.0	Spring washer B 5-FSt-A3E DIN 127	1.000	ST
	3	4.040-709.0	Lever lifting reversing rolling mill	1.000	ST
	4	7.306-230.0	Screw M8x25 -A4-70 (In6Rd)	1.000	ST
	6	7.311-010.0	Hexagon nut M16-8-A3E ISO 4032	2.000	ST
X-X	7	7.306-089.0	Screw M6x12 -8.8-R2R (In6Rd)	3.000	ST
X-X	8	6.421-331.0	Vacuum diaphragm unit oval lift 45 mm	1.000	ST
	9	5.009-184.0	Plate plate pedal	1.000	ST
	10	7.306-090.0	Screw M6x16 -8.8-R3R (In6Rd)	4.000	ST
	11	7.303-273.0	Saucer-head screw M8x25 -St-P2R DIN 603	1.000	ST
	12	7.311-093.0	Hexagon nut M8 -8-R2R ISO 4032	1.000	ST
	13	5.061-449.0	Sheet metal component holder pedal	1.000	ST
	14	5.317-211.0	Bolt pedal GSK	1.000	ST
X	15	6.403-047.0	Plain bearing	2.000	ST
X-X	16	7.343-007.0	Locking ring 20x1,2-FST-RF DIN 471	2.000	ST
X	17	7.306-224.0	Screw M10x35-A2-70 DIN 7984	1.000	ST
	18	5.321-701.0	Handhold	1.000	ST
X-X	19	7.304-521.0	Hexagonal head screw M 6x16-A4-70 ISO 4	2.000	ST
	20	5.061-448.0	Sheet metal component lever GSK	1.000	ST
	21	5.061-442.0	Sheet metal component connection GSK-Ped	1.000	ST
X-X	22	7.311-425.0	Hexagon nut M6 -04-A2E ISO 10511	2.000	ST
	23	4.040-832.0	Sheet metal component complete pedal GSK	1.000	ST
X-X	24	6.330-091.0	Extension spring	1.000	ST
X	25	7.312-264.0	Washer 5-100HV-A3E ISO 7094	1.000	ST
X	26	7.305-104.0	Countersunk screw M8x25 -8.8-R3R ISO 10	2.000	ST

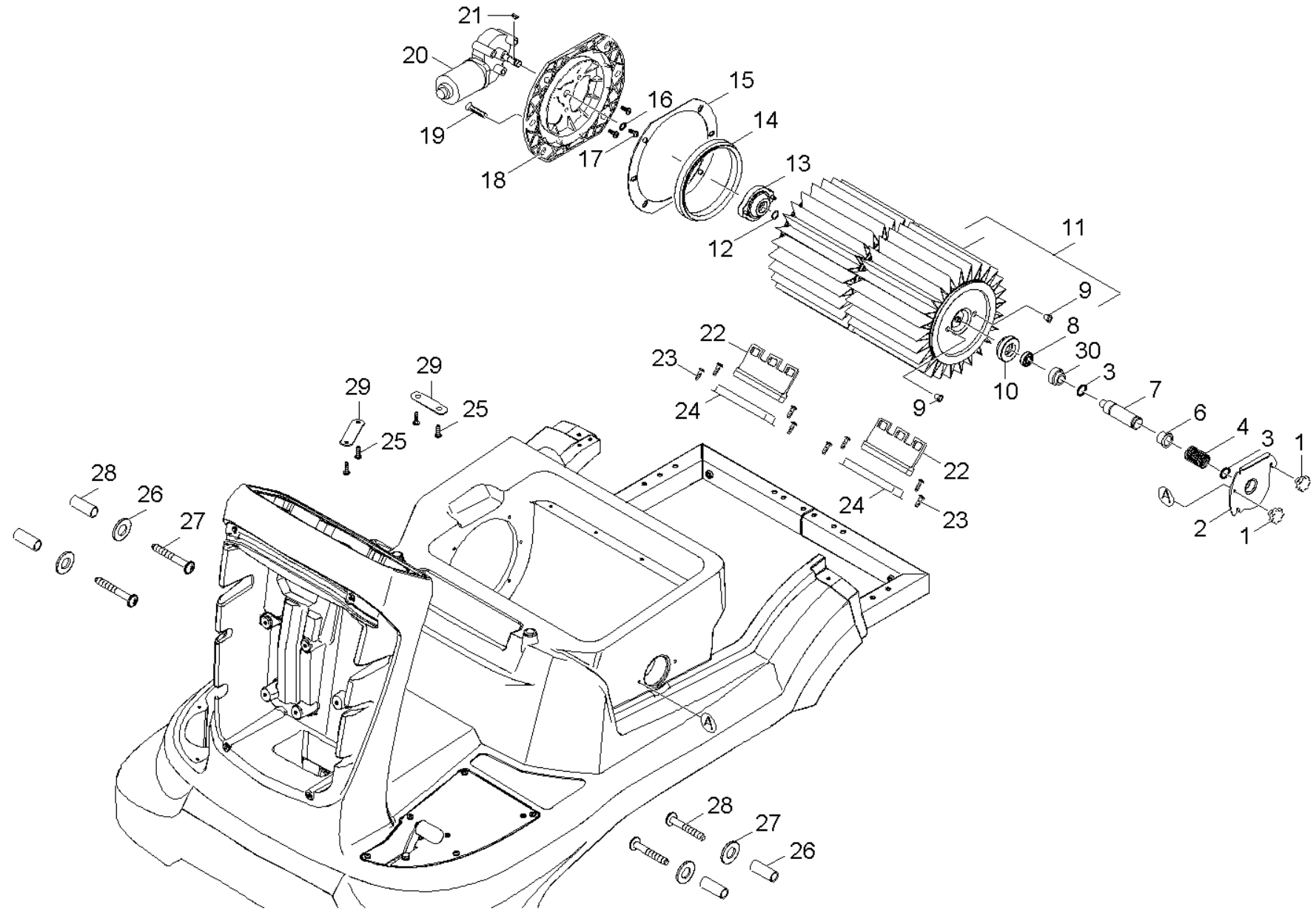
31 Pedal bulk waste flap (0.209-669.0)

ET/VT (spare/wear parts)	Pos	Material #	Name	Qty.	Unit
X-X	27	4.040-815.0	Dust protection vacuum diaphragm unit ov	1.000	ST



32 Pedal battery (0.209-672.0)

ET/VT (spare/wear parts)	Pos	Material #	Name	Qty.	Unit
	1	7.306-230.0	Screw M8x25 -A4-70 (In6Rd)	1.000	ST
	2	4.040-709.0	Lever lifting reversing rolling mill	1.000	ST
	3	6.321-196.0	Star grip M5x10	1.000	ST
X-X	4	6.421-331.0	Vacuum diaphragm unit oval lift 45 mm	1.000	ST
	5	7.311-010.0	Hexagon nut M16-8-A3E ISO 4032	2.000	ST
X-X	6	7.306-089.0	Screw M6x12 -8.8-R2R (In6Rd)	3.000	ST
X	7	7.305-104.0	Countersunk screw M8x25 -8.8-R3R ISO 10	2.000	ST
	9	7.303-273.0	Saucer-head screw M8x25 -St-P2R DIN 603	1.000	ST
	10	7.311-093.0	Hexagon nut M8 -8-R2R ISO 4032	1.000	ST
X-X	14	5.317-086.0	Bolt power brush	1.000	ST
X	15	7.305-030.0	Countersunk screw M6x12 -8.8-R2R (In6Rd)	4.000	ST
	16	5.061-804.0	Sheet metal component bearing pedal KM90	2.000	ST
X-X	17	6.403-031.0	Plain bearing 20/28	2.000	ST
	18	5.321-701.0	Handhold	1.000	ST
	19	4.040-834.0	Sheet metal component complete pedal KM	1.000	ST
X	20	7.306-224.0	Screw M10x35-A2-70 DIN 7984	1.000	ST
X-X	21	6.330-091.0	Extension spring	1.000	ST
X-X	22	6.600-300.0	Tachograph sensor B	1.000	ST
X	23	7.306-443.0	Cylinder head screw M5x12-4.8-A2E ISO 1	2.000	ST
X	24	7.312-002.0	Washer 5-200HV-A3E ISO 7090	1.000	ST
X-X	25	4.040-815.0	Dust protection vacuum diaphragm unit ov	1.000	ST
X-X	26	7.312-278.0	Washer 5-200HV-A2E ISO7093-1	2.000	ST
	27	7.313-002.0	Spring washer B 5-FSt-A3E DIN 127	2.000	ST



40 Filter box (0.209-673.0)

ET/VT (spare/wear parts)	Pos	Material #	Name	Qty.	Unit
X	1	6.321-235.0	Star grip M 6x10	2.000	ST
	2	5.009-419.0	Plate holder filter circle	1.000	ST
X-X	3	7.343-007.0	Locking ring 20x1,2-FST-RF DIN 471	1.000	ST
X	4	5.332-475.0	Helical spring	1.000	ST
X	6	6.403-047.0	Plain bearing	1.000	ST
	7	5.105-620.0	Shaft bearing filter circle	1.000	ST
X-X	8	6.401-363.0	Ball bearing	1.000	ST
X-X	9	6.368-318.0	Cap	2.000	ST
X-X	10	5.474-017.0	Carrier	1.000	ST
X-X	11	4.414-010.0	Filter element with cap only for replace	1.000	ST
	12	7.343-024.0	Snap ring A12 -FST DIN 7993	1.000	ST
	13	5.031-739.0	Carrier	1.000	ST
	14	5.363-526.0	Seal flange filter	1.000	ST
	15	5.363-525.0	Seal flange filter box	1.000	ST
X-X	16	7.343-003.0	Locking ring 12x1-Rf-St DIN 471	1.000	ST
	17	7.306-090.0	Screw M6x16 -8.8-R3R (In6Rd)	3.000	ST
	18	5.122-376.0	Flange	1.000	ST
	19	6.303-035.0	Screw M8x12-ST-A2E DIN 7500-1	6.000	ST
	20	6.613-048.0	Gear motor 24V	1.000	ST
X-X	21	7.318-204.0	Curved washer 3x3,7-C45R DIN 6888	1.000	ST
X-X	22	5.031-344.0	Stripper	2.000	ST
X-X	23	7.303-102.0	Screw 3,5x12 -A2-70-bk (In6Rd)	8.000	ST
	24	5.047-736.0	Sheet metal component	2.000	ST
X-X	25	7.303-108.0	Screw 5x20 -10.9-R2R (In6Rd)	10.000	ST
X	26	7.312-260.0	Washer 6 -100HV-A3E ISO 7094	4.000	ST

40 Filter box (0.209-673.0)

ET/VT (spare/wear parts)	Pos	Material #	Name	Qty.	Unit
	27	7.306-209.0	Screw M 4X 20-A2-70 (In6Rd)	4.000	ST
	28	5.112-805.0	Spacer sleeve	4.000	ST
	29	5.009-426.0	Plate fixing cable	2.000	ST
X	30	5.116-430.0	Sleeve bearing filter	1.000	ST

50 Sweep roller chest (0.209-677.0)

ET/VT (spare/wear parts)	Pos	Material #	Name	Qty.	Unit
X-X	1	7.306-089.0	Screw M6x12 -8.8-R2R (In6Rd)	14.000	ST
	2	5.009-373.0	Plate apron left	1.000	ST
X-X	3	5.394-833.0	Skirting side	2.000	ST
	4	7.343-006.0	Locking ring 17x1-St-ph DIN 471	3.000	ST
X-X	5	7.401-105.0	Ball bearing 6003-2RS Wälzl.St DIN 625	10.000	ST
X-X	6	5.122-189.0	Flange cast	4.000	ST
X-X	7	7.343-073.0	Locking ring 19 -FST-PHR DIN 6799	2.000	ST
X	8	5.105-588.0	Shaft carrier left	1.000	ST
	9	5.061-430.0	Sheet metal component lever	2.000	ST
	10	7.303-047.0	Screw M6x16 -St-R3R (In6Rd)	6.000	ST
	11	5.061-432.0	Sheet metal component left	1.000	ST
	12	6.403-058.0	Thrust washer	2.000	ST
	13	5.114-536.0	Ring	2.000	ST
	14	7.303-066.0	Screw M6x30 -St-R3R (In6Rd)	6.000	ST
X	15	6.321-238.0	Star grip	1.000	ST
	16	7.313-002.0	Spring washer B 5-FSt-A3E DIN 127	1.000	ST
	17	7.304-402.0	Hexagonal head screw M8x65-8.8-A2E ISO	2.000	ST
X	18	5.316-320.0	Bolt	2.000	ST
X-X	19	7.312-074.0	Washer 10 -CuZn ISO 7092	2.000	ST
	20	5.061-427.0	Sheet metal component bulk waste flap le	1.000	ST
	21	4.040-702.0	Sheet metal component sweep roller chang	1.000	ST
X	22	6.321-237.0	Star grip	2.000	ST
	23	6.330-142.0	Extension spring	2.000	ST
X	24	7.311-004.0	Hexagon nut M8 -8-A3E ISO 4032	4.000	ST
X-X	25	7.311-427.0	Hexagon nut M8 -04-A2E ISO 10511	2.000	ST

50 Sweep roller chest (0.209-677.0)

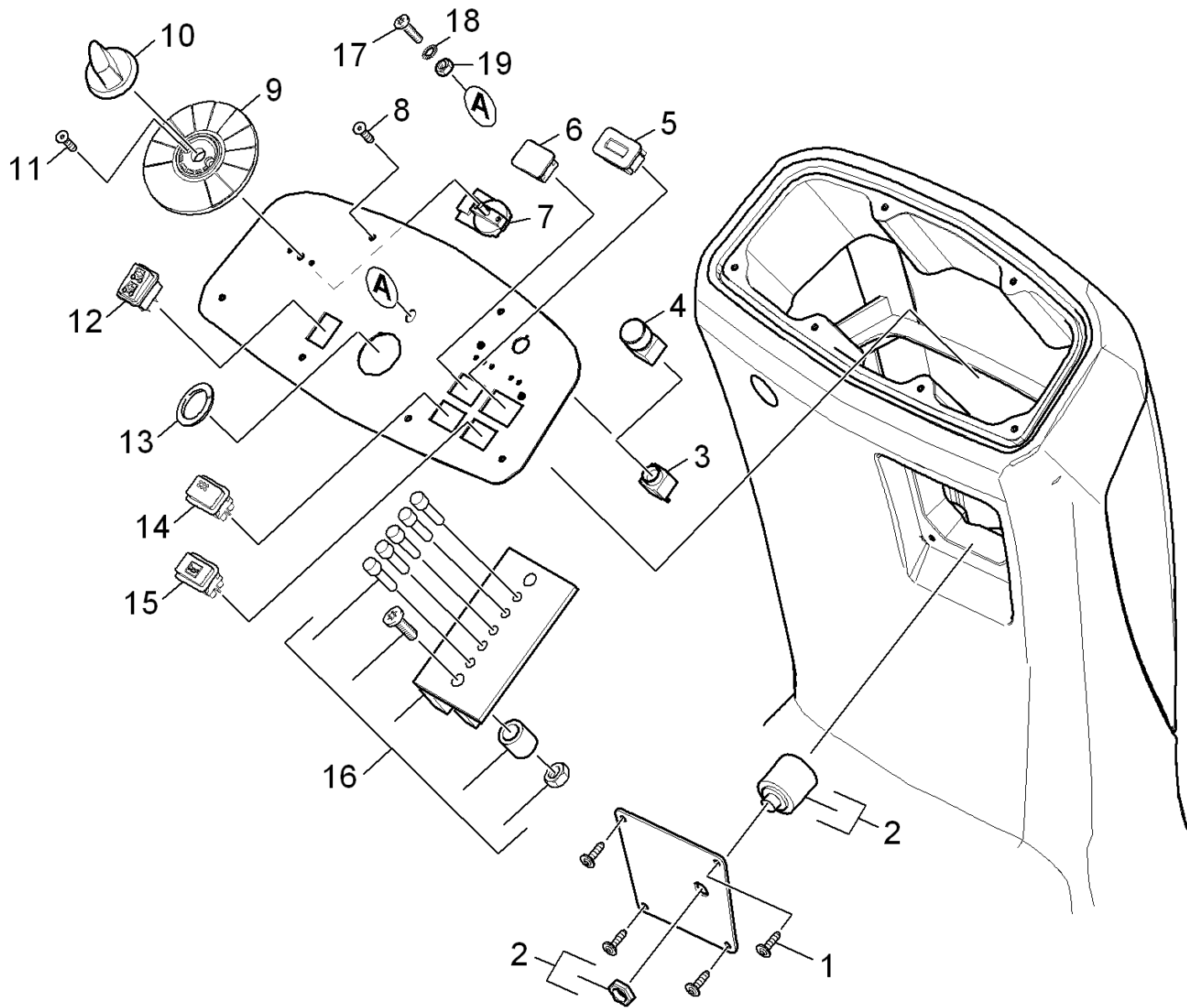
ET/VT (spare/wear parts)	Pos	Material #	Name	Qty.	Unit
X-X	26	5.394-834.0	Rear skirting	1.000	ST
	27	5.061-428.0	Sheet metal component deflection pulley	1.000	ST
X-X	28	6.365-375.0	Sealing profile	1.000	M
	29	5.009-610.0	Plate blank holder seal	1.000	ST
X-X	30	7.343-003.0	Locking ring 12x1-Rf-St DIN 471	1.000	ST
X-X	31	6.401-363.0	Ball bearing	2.000	ST
X-X	32	7.401-115.0	Ball bearing 6002-2RS -WAE LZLAGST DIN 62	1.000	ST
	33	5.317-210.0	Bolt	1.000	ST
	34	7.312-277.0	Washer 8-200HV-A2E ISO7093-1	7.000	ST
X	35	7.303-230.0	Saucer-head screw M8x20 -8.8-A2E DIN603	1.000	ST
X-X	36	6.348-276.0	Deflection pulley	1.000	ST
X-X	37	7.304-406.0	Hexagonal head screw M 8x35-8.8-A2E IS	1.000	ST
X-X	38	6.348-449.0	Large V-belt XPZ LW1500	1.000	ST
X	39	7.305-030.0	Countersunk screw M6x12 -8.8-R2R (In6Rd	1.000	ST
X-X	40	5.115-361.0	Washer	1.000	ST
X-X	41	6.348-297.0	Deflection pulley	1.000	ST
	42	5.317-229.0	Bolt bearing deflection pulley	1.000	ST
X-X	43	7.312-276.0	Washer 6 -200HV-A2E ISO7093-1	1.000	ST
X	44	7.311-512.0	Hexagon nut M 6-8-A2E ISO 7040	2.000	ST
X-X	45	7.304-536.0	Hexagonal head screw M 6x20-A4-70 ISO 4	1.000	ST
X-X	46	7.304-407.0	Hexagonal head screw M 8x45-8.8-A2E ISO	1.000	ST
X-X	47	5.105-587.0	Shaft carrier right	1.000	ST
X-X	48	7.318-065.0	Parallel key 5x5x14-C45R DIN 6885	2.000	ST
	49	5.111-062.0	Sleeve spacer belt stretcher	1.000	ST
	50	7.303-165.0	Saucer-head screw M8x55-ST-A0P DIN 603	1.000	ST

50 Sweep roller chest (0.209-677.0)

ET/VT (spare/wear parts)	Pos	Material #	Name	Qty.	Unit
X-X	51	7.311-510.0	Hexagon nut M 8-8-A2E ISO 7040	1.000	ST
X-X	52	5.625-380.0	Belt pulley	1.000	ST
X-X	53	6.348-448.0	Large V-belt X10 LW 622	1.000	ST
	54	5.009-372.0	Plate apron right	1.000	ST
	55	5.625-489.0	Belt pulley	2.000	ST
	56	5.061-431.0	Sheet metal component right	1.000	ST
X-X	57	6.401-231.0	Flanged bearing	2.000	ST
X-X	58	7.318-002.0	Parallel key 5x5x16 -C45R DIN 6885-1	2.000	ST
X	59	5.105-664.0	Shaft transmission	1.000	ST
X-X	60	7.343-040.0	Locking ring 20x1,2 -St-ph DIN 471	2.000	ST
X-X	61	7.343-304.0	Lock washer 15 -A2 DIN 6799	1.000	ST
	62	5.625-477.0	Belt pulley	1.000	ST
X-X	63	7.343-004.0	Locking ring 15x1-FST-PHR DIN 471	1.000	ST
X-X	64	4.762-430.0	Reversing rolling mill complete KM 90 /6	1.000	ST
X-X	65	5.394-832.0	Skirting front	1.000	ST
	66	4.040-701.0	Sheet metal component bulk waste flap kp	1.000	ST
X-X	67	6.321-236.0	Star grip	1.000	ST
	68	7.304-395.0	Hexagonal head screw M8x16-8.8-A2E ISO	1.000	ST
	69	6.365-371.0	Profile gasket	1.000	M
	70	5.061-430.0	Sheet metal component lever	1.000	ST
	71	5.009-573.0	Plate holder skirting	1.000	ST
X	72	7.312-260.0	Washer 6 -100HV-A3E ISO 7094	1.000	ST
	73	6.343-149.0	Quick-fastener	2.000	ST
X	74	5.394-843.0	Skirting sweep roller chest rear	1.000	ST
X	75	5.317-126.0	Tension roller gear BR 40/25	1.000	ST

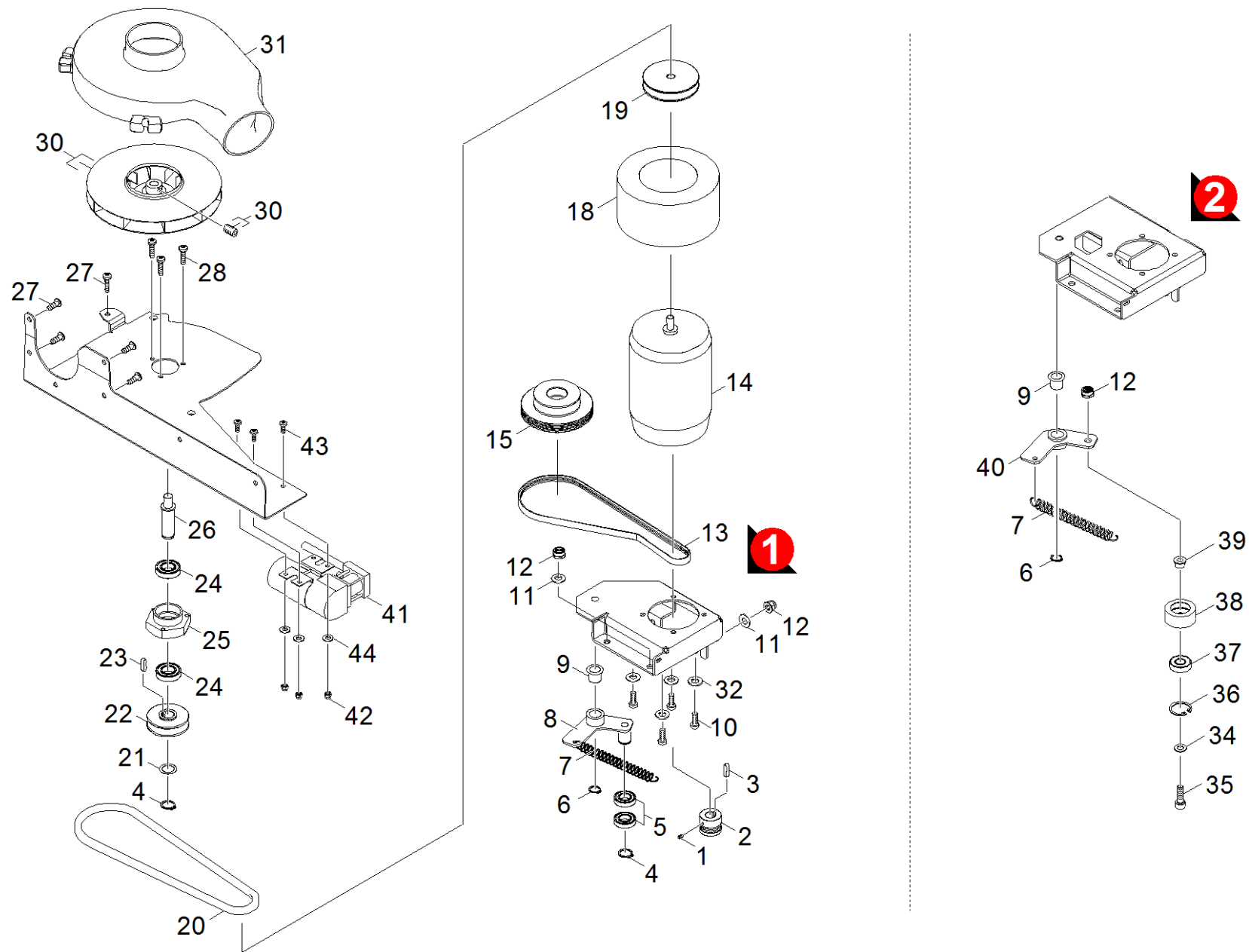
50 Sweep roller chest (0.209-677.0)

ET/VT (spare/wear parts)	Pos	Material #	Name	Qty.	Unit
X	76	5.110-995.0	Spacer sleeve roller	1.000	ST
X	77	7.343-151.0	Locking ring 28x1,2-FST-RF DIN 472	1.000	ST
	78	5.129-224.0	Sleeve	1.000	ST
	79	7.303-009.0	Saucer-head screw M8x50-8.8-A2E DIN 603	1.000	ST
X-X	80	7.312-017.0	Washer 8-A2 ISO 7089	1.000	ST
	81	2.642-180.0	Conversion kit lever KM 90/60	1.000	ST
	82	5.116-420.0	Spacer washer 30x17.5x2.5	1.000	ST
	83	5.062-208.0	Sheet metal component left	1.000	ST
X-X	84	7.306-061.0	Cylinder head screw M10X 20-8.8-A2R ISO	2.000	ST
X-X	85	7.312-005.0	Washer 10-200HV-A3E ISO 7090	2.000	ST
	86	5.062-209.0	Sheet metal component right	1.000	ST
	87	5.114-563.0	Guide ring	1.000	ST
	88	5.094-412.0	Sheet metal component cover	1.000	ST
	89	5.114-569.0	Sleeve	2.000	ST
X-X	90	6.304-121.0	Oval head screw M 5X12	2.000	ST
	91	7.306-042.0	Cylinder head screw M8x25 -8.8-A2E ISO4	2.000	ST
	92	7.303-047.0	Screw M6x16 -St-R3R (In6Rd)	6.000	ST
	93	4.040-824.0	Sheet metal component sweep roller chang	1.000	ST
	94	2.882-740.0	Conversion kit seal sweep tank	1.000	ST
	95	6.273-308.0	Profile gasket	1.000	M
	96	5.062-446.0	Sheet metal component hang in spring	2.000	ST
X	97	6.630-738.0	Extension spring Z-162FX	2.000	ST
	98	7.304-031.0	Hexagonal head screw M8x55-8.8-A2E ISO	2.000	ST



60 Control panel (0.209-682.0)

ET/VT (spare/wear parts)	Pos	Material #	Name	Qty.	Unit
	1	6.303-125.0	Screw 5x20-Sonder In6Rd+Spitze	4.000	ST
X-X	2	6.630-106.0	Key switch	1.000	ST
X-X	3	6.600-114.0	Switch	1.000	ST
X-X	4	6.600-113.0	Pushbutton emergency stop	1.000	ST
X-X	5	6.681-108.0	Hour counter 5-80V	1.000	ST
	6	6.631-736.0	Blind plug	1.000	ST
X-X	7	2.630-001.0	Switch program selection	1.000	ST
	8	6.303-125.0	Screw 5x20-Sonder In6Rd+Spitze	6.000	ST
	9	5.032-738.0	Moulded part symbol washer KM100/100R	1.000	ST
X-X	10	5.321-738.0	Handhold operational concept	1.000	ST
	11	7.305-019.0	Countersunk screw M4x16 -8.8-R2R (In6Rd)	2.000	ST
X	12	6.632-367.0	Switch 2-polig Fahrtrichtung	1.000	ST
	13	6.368-106.0	Edge protection	1.000	M
X-X	14	6.632-478.0	Pushbutton filter cleaning	1.000	ST
X	15	6.632-366.0	Pushbutton two-pole hooter	1.000	ST
	16	2.885-057.0	Set control panel circuit board	1.000	ST
	17	7.306-217.0	Screw M5x14 -8.8-R2R (In6Rd)	1.000	ST
	18	7.312-231.0	Serrated lock washer A5,3 -FSt-A3E DIN6	1.000	ST
X	19	7.311-002.0	Hexagon nut M5 -8-A2E ISO 4032	1.000	ST

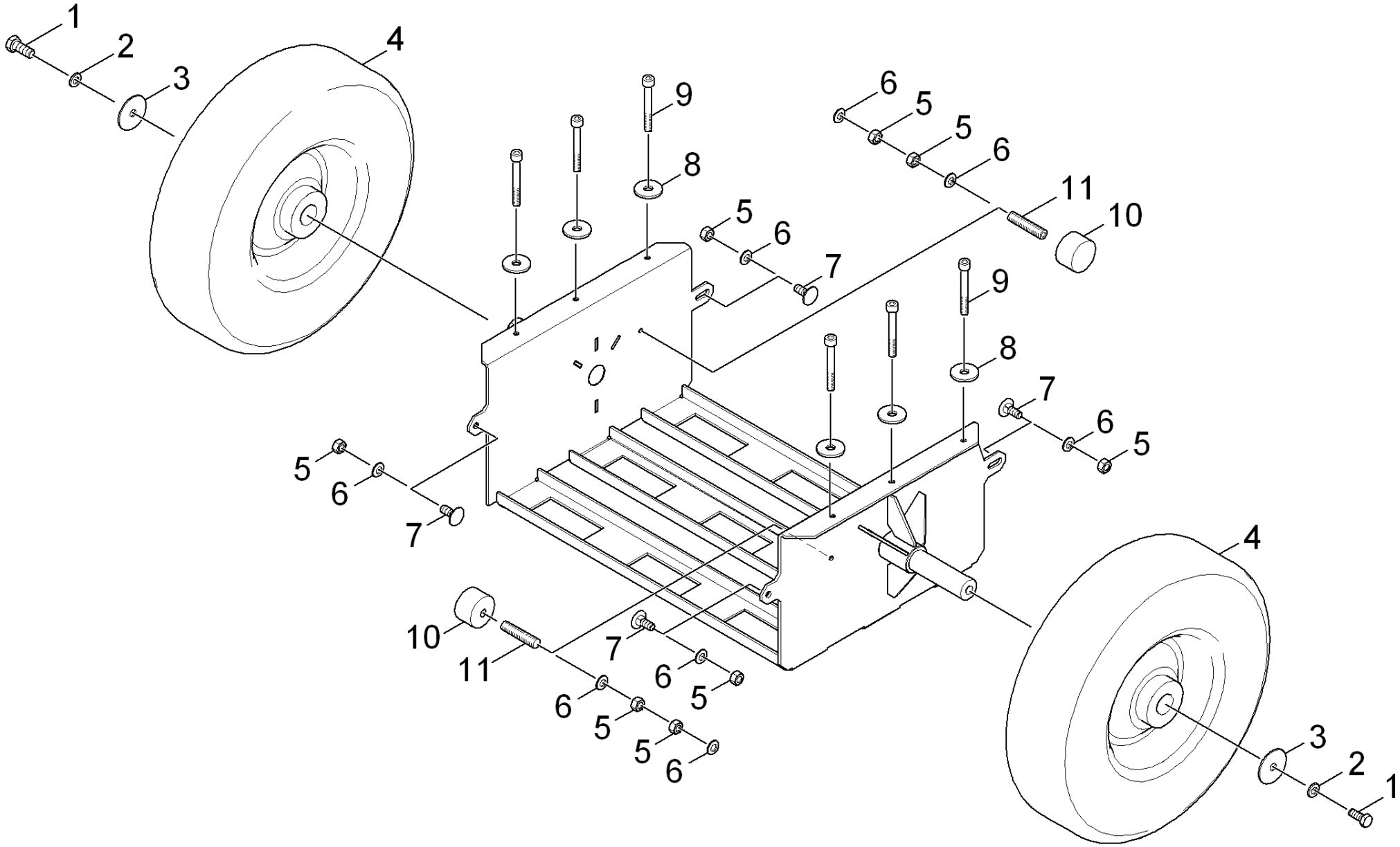


70 Transmission battery (0.208-939.0)

ET/VT (spare/wear parts)	Pos	Material #	Name	Qty.	Unit
X-X	1	7.307-304.0	Threaded pin M4x6 -A2-21H ISO 4028	1.000	ST
	2	5.625-485.0	Belt pulley transmission motor Bp	1.000	ST
X	3	7.318-070.0	Parallel key 5x5x20-C45R DIN 6885-1	1.000	ST
	4	7.343-006.0	Locking ring 17x1-St-ph DIN 471	2.000	ST
X-X	5	7.401-022.0	Ball bearing 16003-2RS-WST PREISW. DIN 6	2.000	ST
X-X	6	7.343-004.0	Locking ring 15x1-FST-PHR DIN 471	1.000	ST
	7	6.330-173.0	Extension spring	1.000	ST
	8	4.040-703.0	Plate belt stretcher complete Bp	1.000	ST
X-X	9	6.403-028.0	Plain bearing	1.000	ST
X-X	10	7.304-521.0	Hexagonal head screw M 6x16-A4-70 ISO 4	4.000	ST
X-X	11	7.312-004.0	Washer 8 -200HV-A3E ISO 7090	4.000	ST
X-X	12	7.311-510.0	Hexagon nut M 8-8-A2E ISO 7040	4.000	ST
X	13	6.348-452.0	Ribbed band 4PJ L=660mm	1.000	ST
	14	6.613-288.0	Direct current motor	1.000	ST
	15	5.625-486.0	Belt pulley sweep roller chest Bp	1.000	ST
X-X	16	7.311-421.0	Hexagon nut M 5-04-A2E ISO 10511	1.000	ST
	17	7.306-079.0	Screw M5x25 -8.8-R2R (In6Rd)	1.000	ST
	18	4.570-010.0	Ring complete	1.000	ST
	19	5.625-487.0	Belt pulley transmission blower Bp	1.000	ST
X	20	6.348-453.0	Round belt d=8 L=600mm	1.000	ST
	21	7.343-079.0	Shim ring 17x24x0,5 -A2 DIN 988	1.000	ST
	22	5.625-488.0	Belt pulley blower wheel Bp	1.000	ST
X-X	23	7.318-084.0	Parallel key 5x5x12 -C45R DIN 6885-1	1.000	ST
X-X	24	7.401-105.0	Ball bearing 6003-2RS Wälzl.St DIN 625	2.000	ST
X-X	25	5.122-189.0	Flange cast	1.000	ST

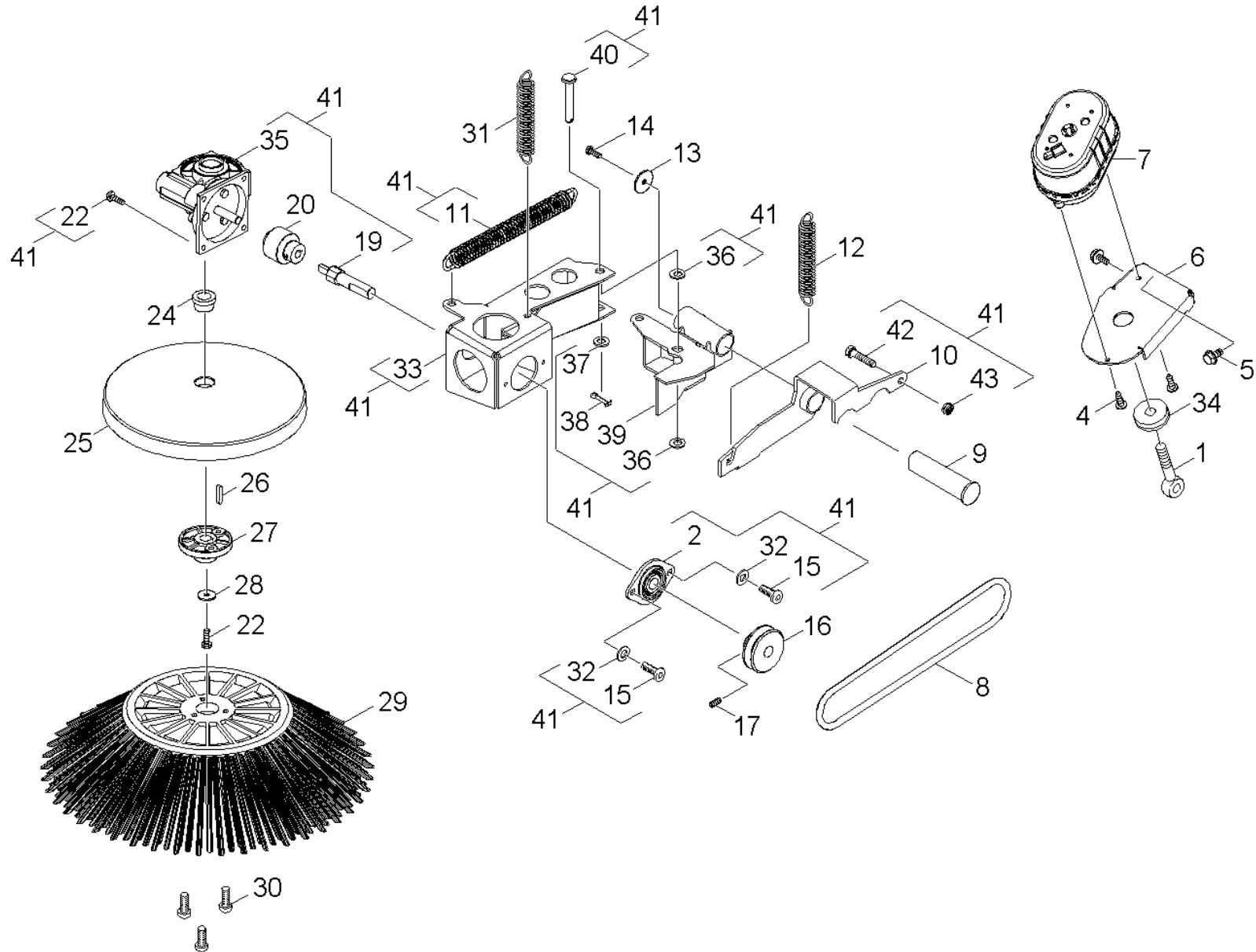
70 Transmission battery (0.208-939.0)

ET/VT (spare/wear parts)	Pos	Material #	Name	Qty.	Unit
	26	5.105-622.0	Shaft holder blower Bp	1.000	ST
X-X	27	7.303-112.0	Screw 6x20 -10.9-R2R (In6Rd)	7.000	ST
	28	7.303-047.0	Screw M6x16 -St-R3R (In6Rd)	3.000	ST
X	30	6.484-330.0	Blower wheel	1.000	ST
	31	5.033-321.0	Housing cover blower KM90/60R	1.000	ST
X-X	32	7.312-276.0	Washer 6 -200HV-A2E ISO7093-1	4.000	ST
X-X	34	7.312-017.0	Washer 8-A2 ISO 7089	1.000	ST
Position text: Version 2					
	35	7.306-042.0	Cylinder head screw M8x25 -8.8-A2E ISO4	1.000	ST
Position text: Version 2					
X	36	7.343-151.0	Locking ring 28x1,2-FST-RF DIN 472	1.000	ST
Position text: Version 2					
	37	7.401-111.0	Ball bearing 6001-2RS -WAE LZLAGST DIN 6	1.000	ST
Position text: Version 2					
	38	5.317-672.0	Tension roller	1.000	ST
Position text: Version 2					
X	39	5.110-995.0	Spacer sleeve roller	1.000	ST
Position text: Version 2					
	40	4.040-875.0	Cocking lever complete	1.000	ST
Position text: Version 2					
X-X	41	6.474-075.0	Vacuum pump 24V	1.000	ST
X	42	7.311-512.0	Hexagon nut M 6-8-A2E ISO 7040	3.000	ST
	43	7.306-090.0	Screw M6x16 -8.8-R3R (In6Rd)	3.000	ST
	44	7.312-291.0	Washer 6-200HV-A2R ISO7093-1	3.000	ST



80 Battery box completely (0.209-679.0)

ET/VT (spare/wear parts)	Pos	Material #	Name	Qty.	Unit
X-X	1	7.304-801.0	Hexagonal head screw M10x25-A4-70 ISO 4	2.000	ST
	2	5.116-060.0	Washer	2.000	ST
X-X	3	7.312-066.0	Washer 10 -A2 ISO 7090	2.000	ST
	4	6.435-840.0	Wheel complete 4.00-8, 6PR	1.000	ST
X	5	7.311-004.0	Hexagon nut M8 -8-A3E ISO 4032	4.000	ST
X-X	6	7.312-004.0	Washer 8 -200HV-A3E ISO 7090	4.000	ST
X-X	7	7.303-204.0	Saucer-head screw M8x20 -St-A2R DIN 603	4.000	ST
	8	7.312-261.0	Washer 8 -100HV-A3E ISO 7094	6.000	ST
	9	7.306-151.0	Cylinder head screw M8x65 -8.8-A2E ISO4	6.000	ST
X-X	10	6.339-065.0	Rubber buffer	2.000	ST
	11	7.307-015.0	Threaded pin M8x50-St-45H-A2E ISO 4026	2.000	ST

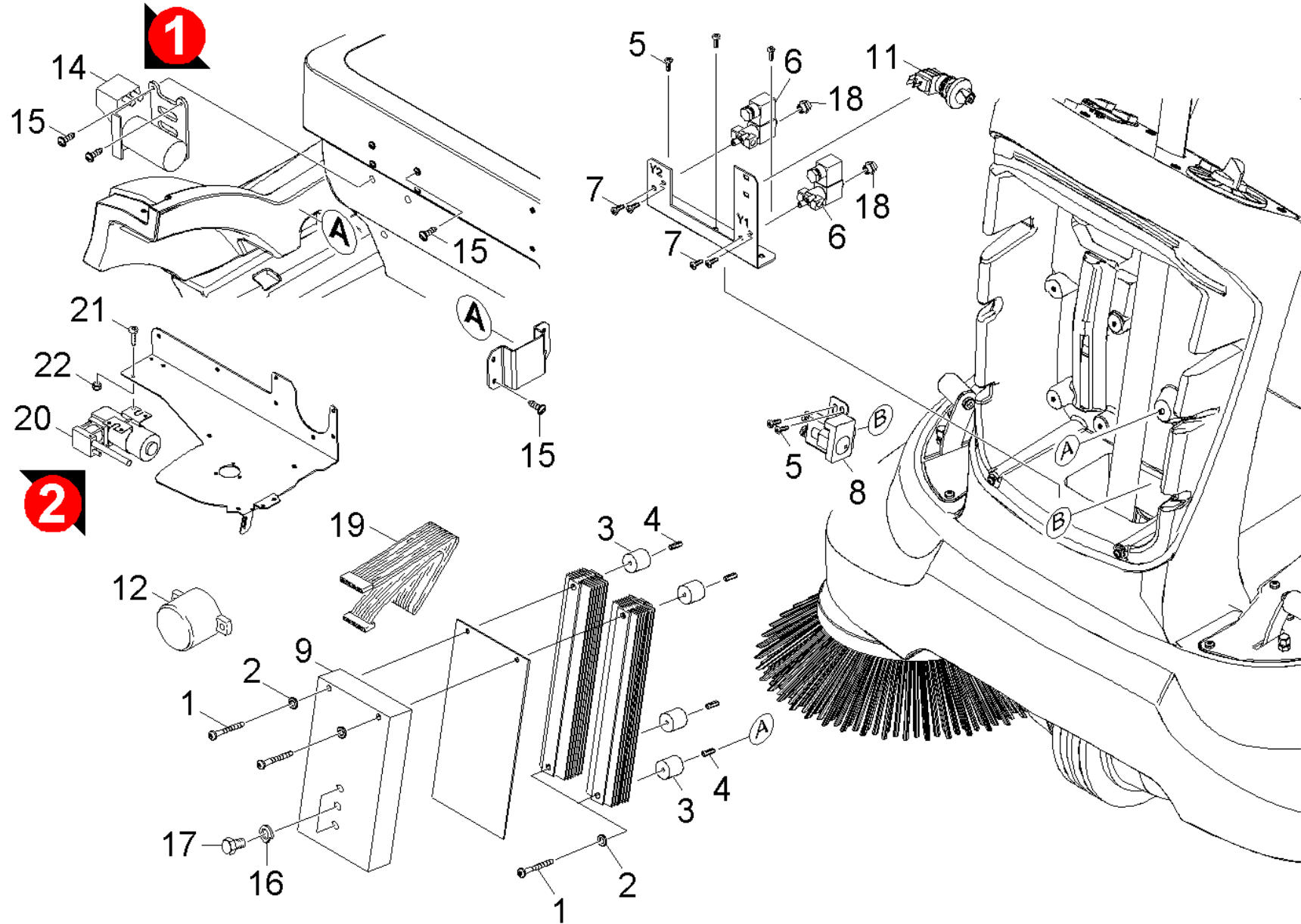


90 Side broom right (0.208-821.0)

ET/VT (spare/wear parts)	Pos	Material #	Name	Qty.	Unit
X-X	1	7.303-262.0	Eye screw LBM 8x30-1.4571 DIN 444	1.000	ST
X-X	2	6.401-242.0	Flanged bearing	1.000	ST
X-X	4	7.303-107.0	Screw 5x16 -10.9-P2R (K-In6Rd)	2.000	ST
	5	6.303-031.0	Screw M8x16-ST-A2R DIN 7500-1	2.000	ST
	6	5.061-410.0	Sheet metal component vacuum diaphragm u	1.000	ST
X-X	7	6.421-331.0	Vacuum diaphragm unit oval lift 45 mm	1.000	ST
X-X	8	6.348-409.0	Round belt	1.000	ST
X	9	5.105-591.0	Shaft bearing side brush	1.000	ST
	10	4.040-866.0	Lifting right complete	1.000	ST
X	11	6.330-456.0	Extension spring RZ-1771 m=5	1.000	ST
X-X	12	6.330-200.0	Extension spring	1.000	ST
	13	5.115-150.0	Washer	1.000	ST
X-X	14	7.306-031.0	Screw M 6x16-A2-70 DIN 7984	1.000	ST
	15	7.306-092.0	Screw M6x20-ST- 8.8-R3R (IN6RD)	2.000	ST
	16	5.625-360.0	Belt pulley	1.000	ST
X	17	7.307-352.0	Threaded pin M 6X 14-45H ISO 4029	1.000	ST
X-X	19	5.105-590.0	Shaft transmission side brush	1.000	ST
X-X	20	6.465-020.0	Coupler	1.000	ST
	22	7.306-092.0	Screw M6x20-ST- 8.8-R3R (IN6RD)	5.000	ST
X-X	24	5.110-703.0	Sleeve	1.000	ST
X	25	5.064-252.0	Rejecting plate	1.000	ST
X-X	26	7.318-079.0	Parallel key A 5x5x25-C45R DIN 6885	1.000	ST
X-X	27	5.120-305.0	Hub	1.000	ST
X	28	7.312-260.0	Washer 6 -100HV-A3E ISO 7094	1.000	ST
X-X	29	6.906-132.0	Side broom standard	1.000	ST

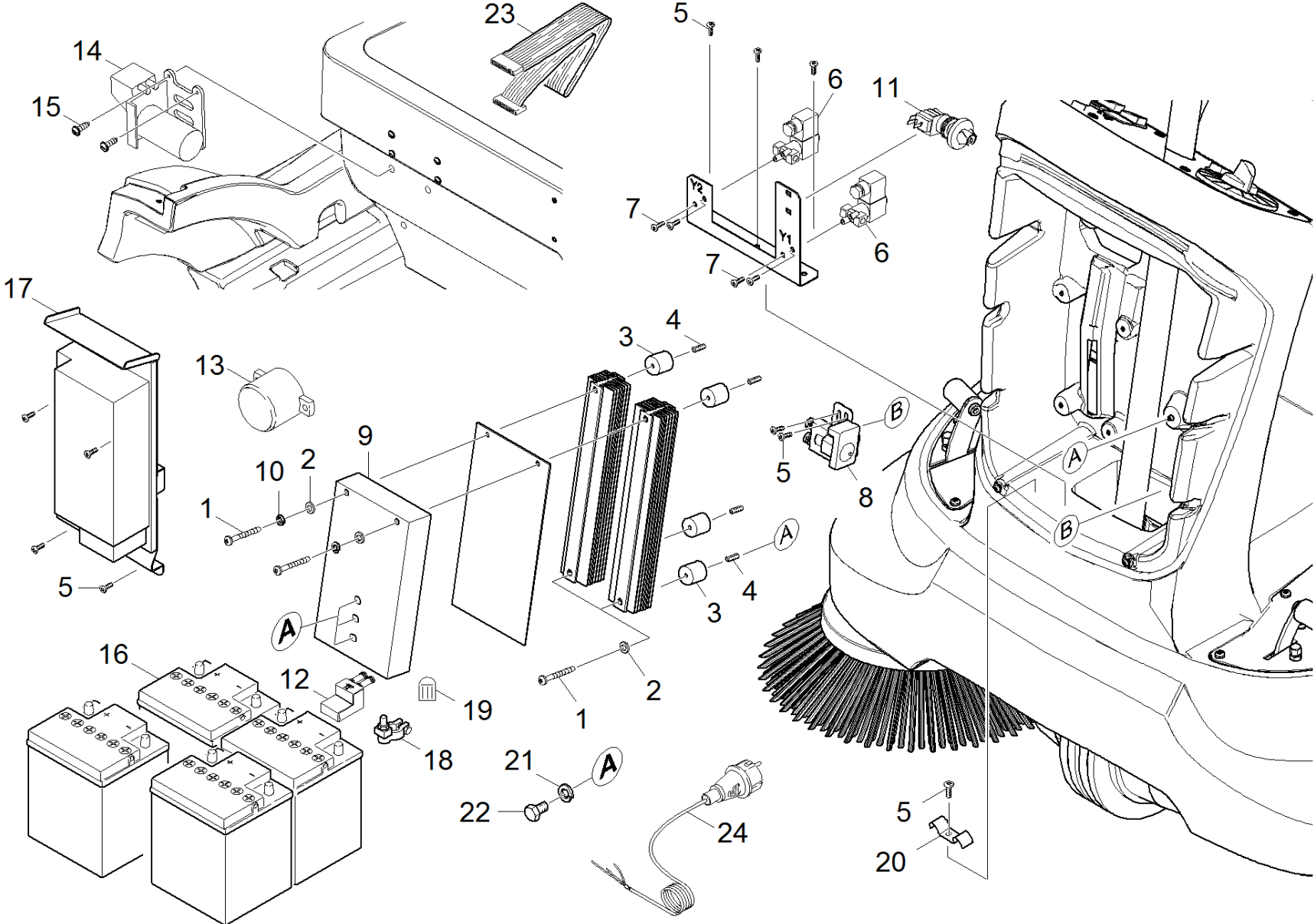
90 Side broom right (0.208-821.0)

ET/VT (spare/wear parts)	Pos	Material #	Name	Qty.	Unit
X-X	29	6.905-626.0	Side broom soft	1.000	ST
X-X	30	7.306-500.0	Cylinder head screw M6x12-8.8-A2E DIN 6	3.000	ST
X-X	31	6.330-079.0	Extension spring	1.000	ST
X-X	32	7.312-276.0	Washer 6 -200HV-A2E ISO7093-1	2.000	ST
X-X	33	4.040-867.0	Arm side broom right	1.000	ST
X-X	34	4.040-815.0	Dust protection vacuum diaphragm unit ov	1.000	ST
X-X	35	6.454-079.0	Worm gearing	1.000	ST
X	36	7.312-062.0	Washer 10-Kunststoff ISO7089	2.000	ST
X-X	37	7.312-005.0	Washer 10-200HV-A3E ISO 7090	1.000	ST
X-X	38	7.316-341.0	Cotter 3,2x16-St-A2E ISO 1234	1.000	ST
	39	4.040-865.0	Suspension side broom complete	1.000	ST
X	40	7.316-225.0	Bolt B10,0x65-ST-A2E ISO 2341	1.000	ST
X-X	41	2.642-695.0	Conversion kit side broom right KM 90/60	1.000	ST
X-X	42	7.304-406.0	Hexagonal head screw M 8x35-8.8-A2E IS	1.000	ST
X-X	43	7.311-427.0	Hexagon nut M8 -04-A2E ISO 10511	1.000	ST



100 Electronics battery (0.208-936.0)

ET/VT (spare/wear parts)	Pos	Material #	Name	Qty.	Unit	var. information
	1	7.306-201.0	Screw M 6x55-A2-70 (IN6RD)	4.000	ST	
X-X	2	7.312-003.0	Washer 6 -200HV-A3E ISO 7090	8.000	ST	
	3	6.339-208.0	Rubber buffer	4.000	ST	
X	4	7.307-352.0	Threaded pin M 6X 14-45H ISO 4029	4.000	ST	
	5	6.303-125.0	Screw 5x20-Sonder In6Rd+Spitze	5.000	ST	
X-X	6	6.472-979.0	Solenoid valve	2.000	ST	
	7	7.303-030.0	Screw M4x8 -St-P2R (In6Rd)	4.000	ST	
X-X	8	6.633-389.0	Power relay	1.000	ST	
X-X	9	6.682-935.0	Control system KM 90/60 R Bp/Pack	1.000	ST	
X-X	10	7.306-138.0	Screw M6x60 -8.8-R3R (In6Rd)	2.000	ST	
X-X	11	6.635-566.0	Pressure switch	1.000	ST	
X-X	12	6.630-158.0	Buzzer	1.000	ST	
X	14	6.474-037.0	Pump	1.000	ST	Version 1
X-X	15	7.303-107.0	Screw 5x16 -10.9-P2R (K-In6Rd)	9.000	ST	
X-X	16	7.313-018.0	Spring washer B 6-1.4310 DIN 127	3.000	ST	
	17	7.304-540.0	Hexagonal head screw M 6x8-A4-70 ISO 40	3.000	ST	
X	18	6.761-336.0	Filter pneumatic	1.000	ST	
	19	6.768-360.0	Ribbon cable 34 pol. 300mm	1.000	ST	
X-X	20	6.474-075.0	Vacuum pump 24V	1.000	ST	Version 2
	21	7.306-090.0	Screw M6x16 -8.8-R3R (In6Rd)	3.000	ST	
X	22	7.311-512.0	Hexagon nut M 6-8-A2E ISO 7040	3.000	ST	

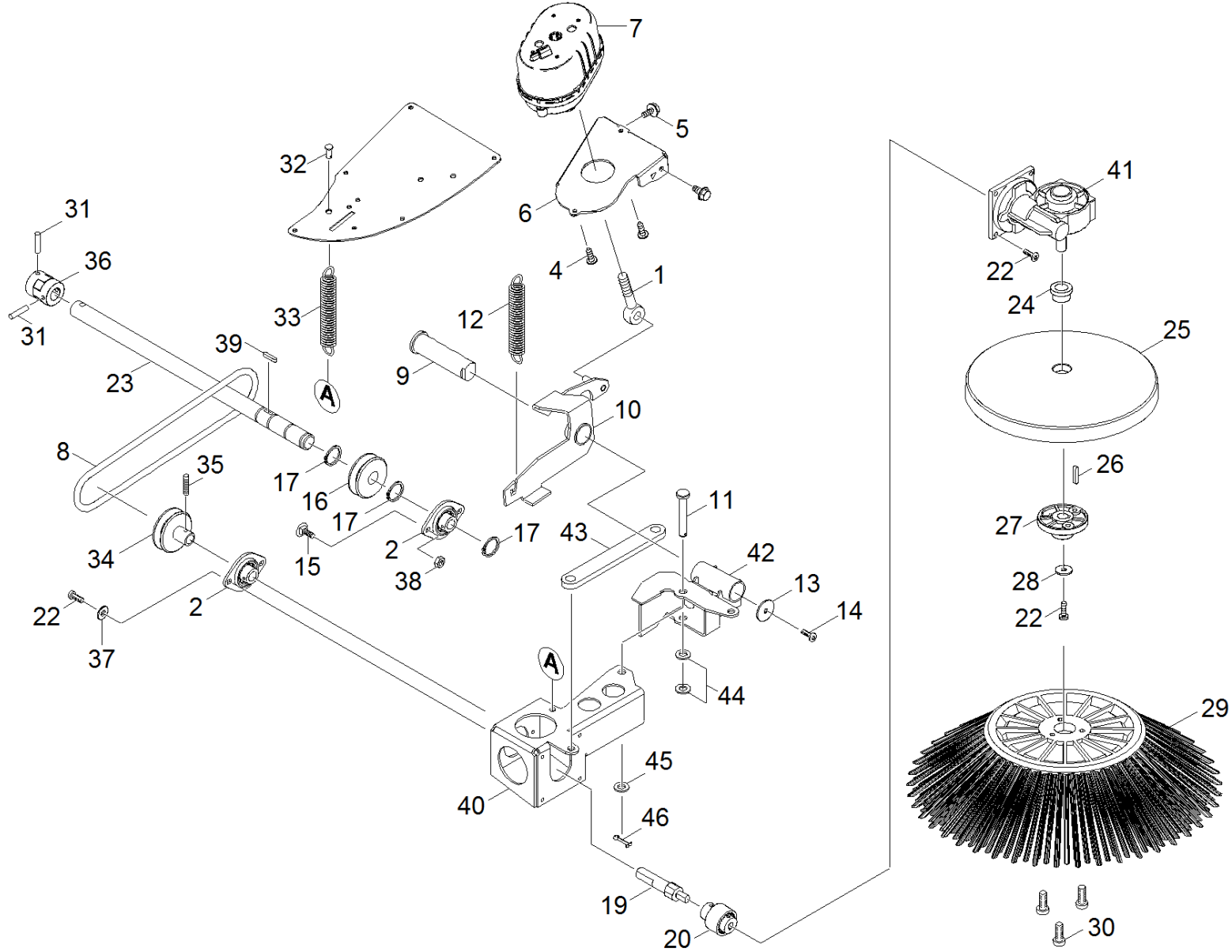


110 Electronics battery (0.208-941.0)

ET/VT (spare/wear parts)	Pos	Material #	Name	Qty.	Unit	var. information
	1	7.306-201.0	Screw M 6x55-A2-70 (IN6RD)	4.000	ST	
X-X	2	7.312-003.0	Washer 6 -200HV-A3E ISO 7090	8.000	ST	
	3	6.339-208.0	Rubber buffer	4.000	ST	
X	4	7.307-352.0	Threaded pin M 6X 14-45H ISO 4029	4.000	ST	
	5	6.303-125.0	Screw 5x20-Sonder In6Rd+Spitze	10.000	ST	
X-X	6	6.472-979.0	Solenoid valve	2.000	ST	
	7	7.303-030.0	Screw M4x8 -St-P2R (In6Rd)	4.000	ST	
X-X	8	6.633-389.0	Power relay	1.000	ST	
X-X	9	6.682-935.0	Control system KM 90/60 R Bp/Pack	1.000	ST	
	10	7.313-032.0	Spring washer A 5-Edelstahl DIN 128	2.000	ST	
	11	2.641-889.0	Conversion kit pressure switch	1.000	ST	Version 1
	11	2.642-318.0	Conversion kit electric pressure switch	1.000	ST	Version 2
X-X	12	5.394-782.0	Covering cap batterie terminal	1.000	ST	
X-X	13	6.630-158.0	Buzzer	1.000	ST	
X	14	6.474-037.0	Pump	1.000	ST	
X-X	15	7.303-107.0	Screw 5x16 -10.9-P2R (K-In6Rd)	5.000	ST	
X-X	16	6.654-124.0	Battery DETA	4.000	ST	
X	17	4.839-389.0	Battery charger complete	1.000	ST	
X-X	18	6.643-948.0	Pole binder single	1.000	ST	
	19	6.368-294.0	Protecting cap black 1/4" PVC	1.000	ST	
X-X	20	6.648-077.0	Cable clamp	2.000	ST	
X-X	21	7.313-018.0	Spring washer B 6-1.4310 DIN 127	3.000	ST	
	22	7.304-540.0	Hexagonal head screw M 6x8-A4-70 ISO 40	3.000	ST	
	23	6.768-360.0	Ribbon cable 34 pol. 300mm	1.000	ST	
	24	6.642-133.0	Power plug *EU	1.000	ST	1.047-202/-206

120 Accessories (0.208-825.0)

Pos	Material #	Name	Qty.	Unit
121	0.210-751.0	Add-on kit side broom left	1.000	ST
122	0.208-824.0	ABS revolving signal light	1.000	ST
123	0.209-309.0	ABS carpet sweep	1.000	ST
124	0.209-414.0	ABS tire equipment breakdown surely	1.000	ST

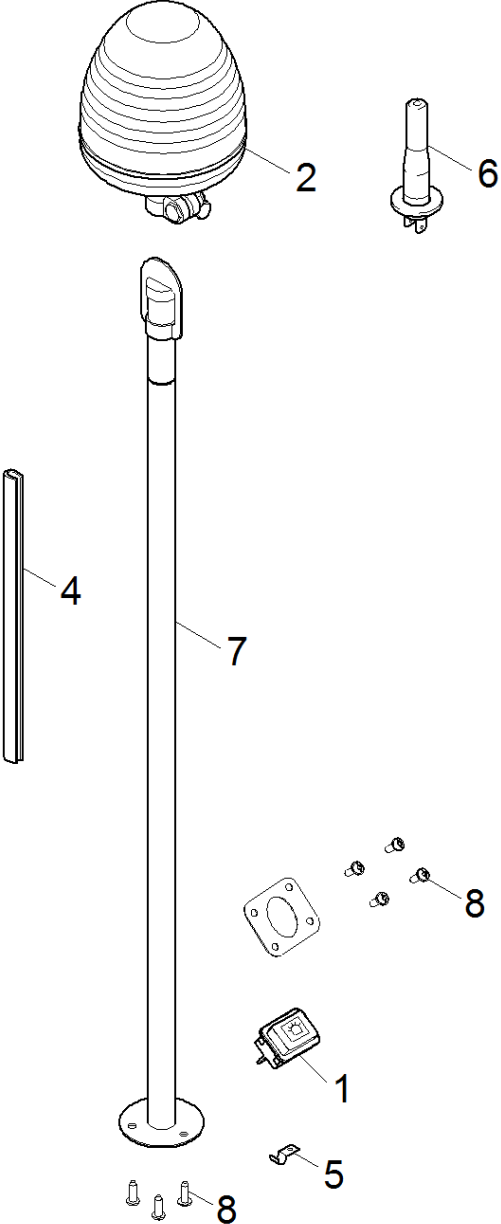


121 Add-on kit side broom left (0.210-751.0)

ET/VT (spare/wear parts)	Pos	Material #	Name	Qty.	Unit	var. information
X-X	1	7.303-262.0	Eye screw LBM 8x30-1.4571 DIN 444	1.000	ST	
X-X	2	6.401-242.0	Flanged bearing	2.000	ST	
X	3	7.311-004.0	Hexagon nut M8 -8-A3E ISO 4032	1.000	ST	
X-X	4	7.303-107.0	Screw 5x16 -10.9-P2R (K-In6Rd)	2.000	ST	
	5	6.303-031.0	Screw M8x16-ST-A2R DIN 7500-1	2.000	ST	
	6	5.061-444.0	Sheet metal component holder UDD links	1.000	ST	
X-X	7	6.421-331.0	Vacuum diaphragm unit oval lift 45 mm	1.000	ST	
X-X	8	6.348-409.0	Round belt	1.000	ST	
X	9	5.105-591.0	Shaft bearing side brush	1.000	ST	
	10	4.040-869.0	Lifting left complete	1.000	ST	
X	11	7.316-225.0	Bolt B10,0x65-ST-A2E ISO 2341	1.000	ST	
X-X	12	6.330-200.0	Extension spring	1.000	ST	
	13	5.115-150.0	Washer	1.000	ST	
X-X	14	7.306-031.0	Screw M 6x16-A2-70 DIN 7984	1.000	ST	
X-X	15	7.303-139.0	Saucer-head screw M6x20 -A2 DIN 603	2.000	ST	
	16	5.625-477.0	Belt pulley	1.000	ST	
X-X	17	7.343-004.0	Locking ring 15x1-FST-PHR DIN 471	4.000	ST	
X-X	19	5.105-590.0	Shaft transmission side brush	1.000	ST	
X-X	20	6.465-020.0	Coupler	1.000	ST	
	22	7.306-092.0	Screw M6x20-ST- 8.8-R3R (IN6RD)	7.000	ST	
	23	5.105-618.0	Shaft transmission left SB	1.000	ST	
X-X	24	5.110-703.0	Sleeve	1.000	ST	
X	25	5.064-252.0	Rejecting plate	1.000	ST	
X-X	26	7.318-079.0	Parallel key A 5x5x25-C45R DIN 6885	1.000	ST	
X-X	27	5.120-305.0	Hub	1.000	ST	

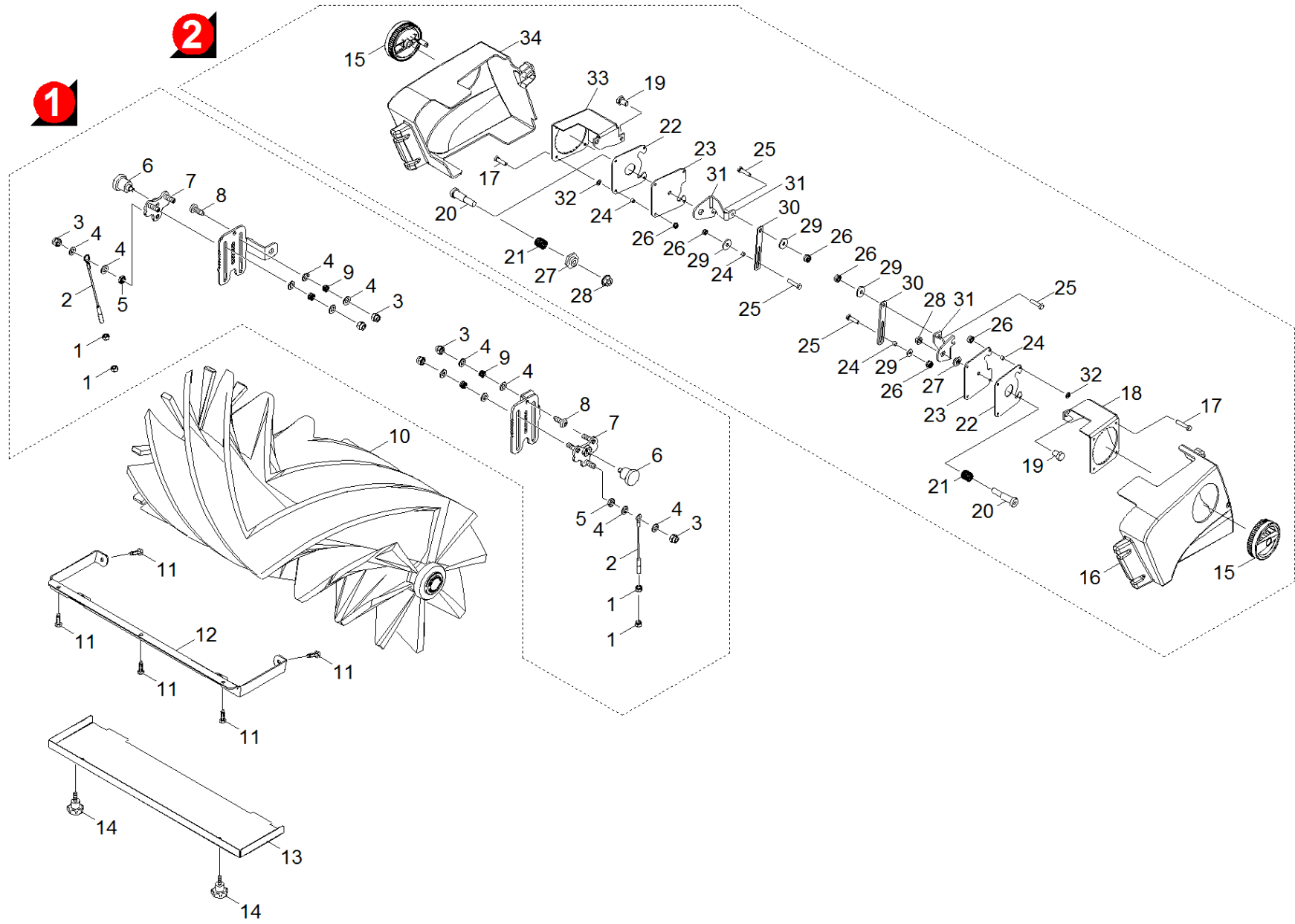
121 Add-on kit side broom left (0.210-751.0)

ET/VT (spare/wear parts)	Pos	Material #	Name	Qty.	Unit	var. information
X	28	7.312-260.0	Washer 6 -100HV-A3E ISO 7094	1.000	ST	
X-X	29	6.905-626.0	Side broom soft	1.000	ST	
X-X	29	6.906-132.0	Side broom standard	1.000	ST	
X-X	30	7.306-500.0	Cylinder head screw M6x12-8.8-A2E DIN 6	3.000	ST	
X-X	31	7.314-945.0	Spring pin 5,0x28-St ISO 8752	1.000	ST	VERSION 2 (l = 28mm)
X-X	31	6.491-557.0	Spring pin	2.000	ST	VERSION 1 (l = 25,4mm)
X-X	32	5.317-086.0	Bolt power brush	1.000	ST	
X-X	33	6.330-079.0	Extension spring	1.000	ST	
	34	5.625-360.0	Belt pulley	1.000	ST	
X	35	7.307-352.0	Threaded pin M 6X 14-45H ISO 4029	1.000	ST	
X-X	36	6.465-027.0	Coupler	1.000	ST	
X-X	37	7.312-276.0	Washer 6 -200HV-A2E ISO7093-1	2.000	ST	
X-X	38	7.311-425.0	Hexagon nut M6 -04-A2E ISO 10511	2.000	ST	
X-X	39	7.318-065.0	Parallel key 5x5x14-C45R DIN 6885	1.000	ST	
	40	4.040-870.0	Arm side brush left	1.000	ST	
	41	6.454-036.0	Worm gearing	1.000	ST	
	42	4.040-868.0	Suspension side brush left	1.000	ST	
	43	5.062-367.0	Sheet metal component fixing battery	1.000	ST	
X	44	7.312-062.0	Washer 10-Kunststoff ISO7089	2.000	ST	
X-X	45	7.312-005.0	Washer 10-200HV-A3E ISO 7090	1.000	ST	
X-X	46	7.316-341.0	Cotter 3,2x16-St-A2E ISO 1234	1.000	ST	



122 ABS revolving signal light (0.208-824.0)

ET/VT (spare/wear parts)	Pos	Material #	Name	Qty.	Unit	var. information
	1	6.632-369.0	Switch two-pole revolving signal light	1.000	ST	
X	2	6.651-426.0	Revolving signal light 12/24V	1.000	ST	BAT
	4	6.368-106.0	Edge protection	1.000	M	
	5	7.373-000.0	Clamp 1-6-W1-2 DIN 72571	3.000	ST	
X	6	6.651-295.0	Halogen lamp 24V70W	1.000	ST	BAT
	7	4.040-735.0	Tube holder complete ABS RKL KM90/60R	1.000	ST	
X-X	8	7.303-112.0	Screw 6x20 -10.9-R2R (In6Rd)	15.000	ST	

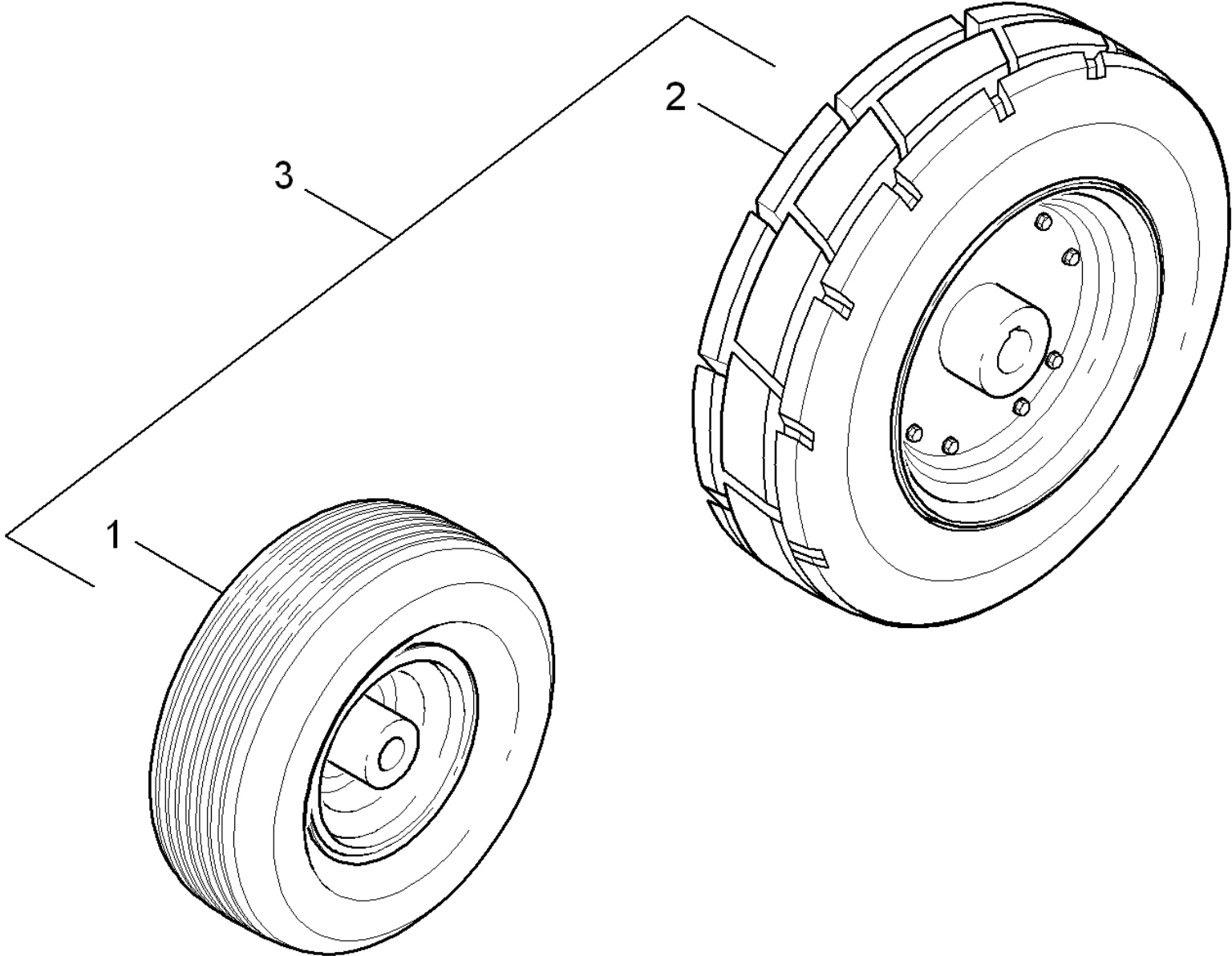


123 ABS carpet sweep (0.209-309.0)

ET/VT (spare/wear parts)	Pos	Material #	Name	Qty.	Unit
X	1	7.311-002.0	Hexagon nut M5 -8-A2E ISO 4032	4.000	ST
	2	4.172-033.0	Rope completely	2.000	ST
X	3	7.311-512.0	Hexagon nut M 6-8-A2E ISO 7040	6.000	ST
X-X	4	7.312-003.0	Washer 6 -200HV-A3E ISO 7090	12.000	ST
	5	7.311-200.0	Hexagon nut M6 -04-A2E ISO 4035	2.000	ST
	6	6.394-619.0	Handhold lock-in position bolt	2.000	ST
	7	4.040-752.0	Sheet metal component adjustment complet	2.000	ST
	8	7.303-047.0	Screw M6x16 -St-R3R (In6Rd)	2.000	ST
	9	5.332-208.0	Helical spring	4.000	ST
	10	4.762-441.0	Reversing rolling mill complete antistat	1.000	ST
	11	6.303-183.0	Self-drilling screw ST4,8X16-K-ST-A2E D	5.000	ST
	12	5.061-845.0	Sheet metal component holder perforated	1.000	ST
	13	5.061-846.0	Sheet metal component perforated grid	1.000	ST
	14	6.321-196.0	Star grip M5x10	2.000	ST
	15	5.050-403.0	Handle carriage adjustment	2.000	ST
	16	5.033-831.0	Covering left	1.000	ST
	17	7.304-375.0	Hexagonal head screw M 5x25-8.8-A2E IS	8.000	ST
	18	5.062-361.0	Sheet metal component holder left	1.000	ST
X	19	7.304-394.0	Hexagonal head screw M8x12 -8.8-A2E ISO	2.000	ST
	20	5.105-673.0	Bolt handle	2.000	ST
	21	5.332-207.0	Helical spring	2.000	ST
	22	5.062-363.0	Sheet metal component support	2.000	ST
	23	5.062-362.0	Sheet metal component fixing	2.000	ST
	24	5.110-315.0	Sleeve	12.000	ST
	25	7.304-374.0	Hexagonal head screw M 5x20-8.8-A2E IS	4.000	ST

123 ABS carpet sweep (0.209-309.0)

ET/VT (spare/wear parts)	Pos	Material #	Name	Qty.	Unit
X-X	26	7.311-421.0	Hexagon nut M 5-04-A2E ISO 10511	12.000	ST
X	27	5.116-439.0	Sleeve belt stretcher	2.000	ST
X-X	28	7.311-060.0	Hexagon nut M 8-A2-70 EN 1661	2.000	ST
X	29	7.312-264.0	Washer 5-100HV-A3E ISO 7094	4.000	ST
	30	5.062-356.0	Sheet metal component carrier	2.000	ST
	31	5.062-357.0	Sheet metal component adjustment	2.000	ST
	32	7.312-052.0	Washer 5 -A2 ISO 7089	8.000	ST
	33	5.062-358.0	Sheet metal component holder right	1.000	ST
	34	5.033-830.0	Covering right	2.000	ST

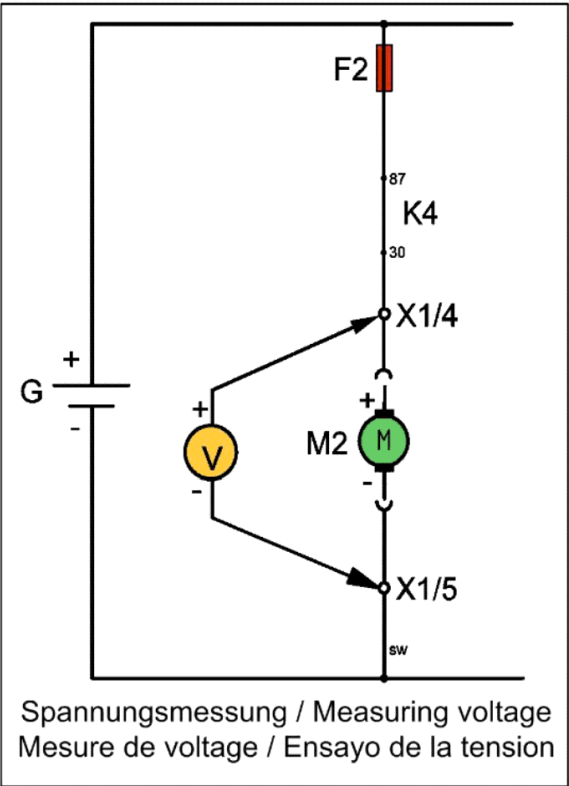
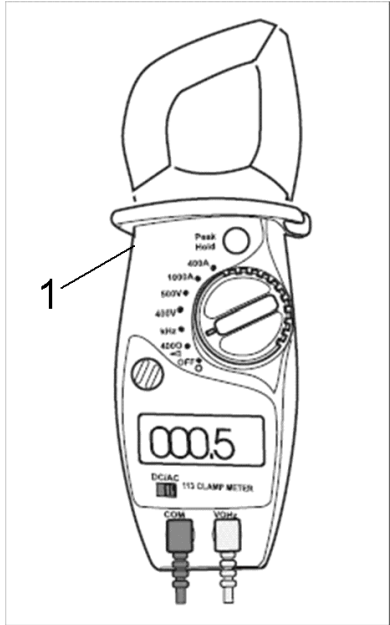


124 ABS tire equipment breakdown surely (0.209-414.0)

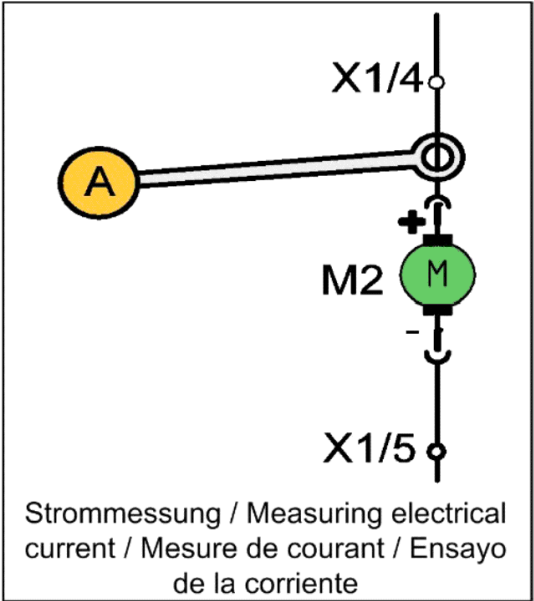
ET/VT (spare/wear parts)	Pos	Material #	Name	Qty.	Unit
X-X	1	6.435-811.0	Wheel breakdown surely	1.000	ST
X	2	6.435-812.0	Wheel breakdown surely	2.000	ST
	3	4.040-801.0	ABS tire equipment breakdown surely	1.000	ST

130 Special tools (0.120-635.0)

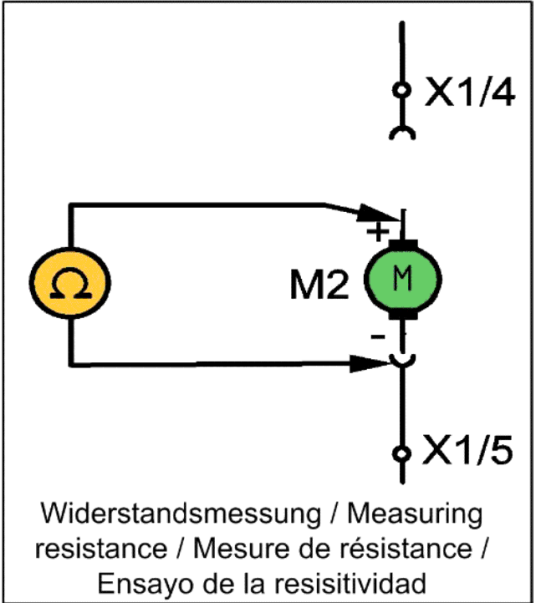
Pos	Material #	Name	Qty.	Unit
200	0.120-008.0	Tool measuring instrument current AC/DC,	1.000	ST
210	0.120-087.0	Tool hydrometer acid	1.000	ST
220	0.120-139.0	Tool oil pump extraction system -12V	1.000	ST



Spannungsmessung / Measuring voltage
Mesure de voltage / Ensayo de la tension



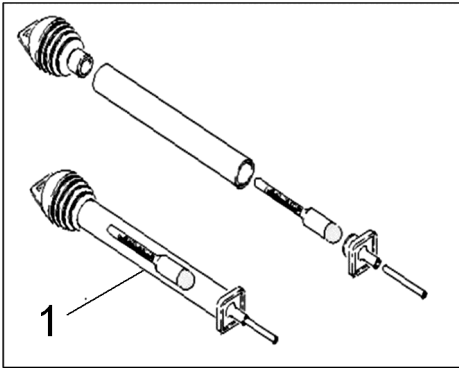
Strommessung / Measuring electrical current / Mesure de courant / Ensayo de la corriente



Widerstandsmessung / Measuring resistance / Mesure de résistance / Ensayo de la resistividad

200 Tool measuring instrument current AC/DC, (0.120-008.0)

Pos	Material #	Name	Qty.	Unit
1	6.803-022.0	Clamp meter AC/DC,A,V,Ohm	1.000	ST



1,10 – 1,30 kg/ltr

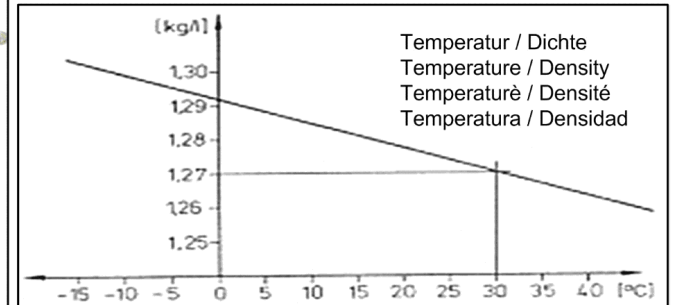
D

Battery

$D_{max} = 0,04 \text{ kg/ltr}$

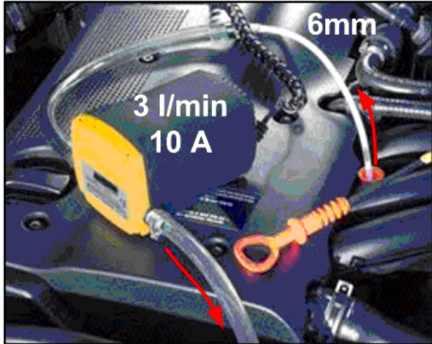
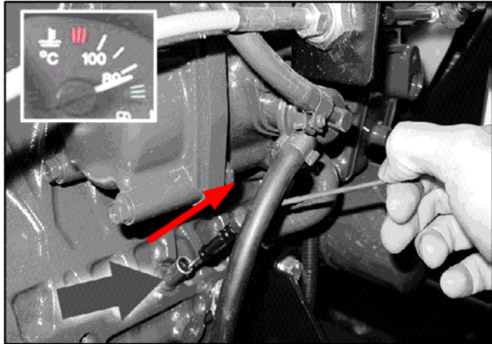
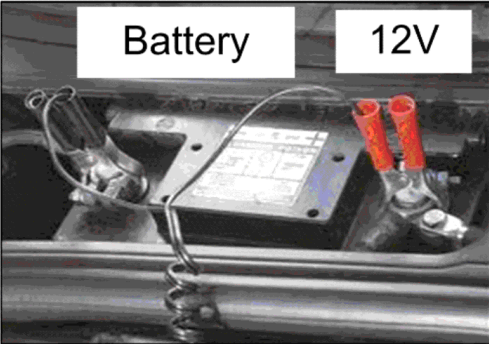
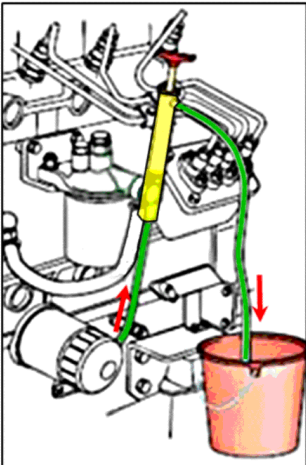
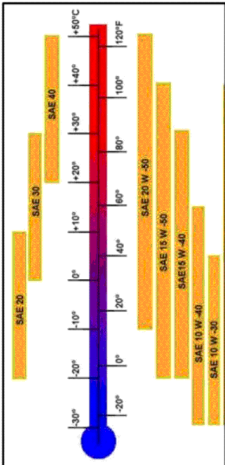


12-Volt Batterie / Battery / Bateria	Ladung / Charge / Carga	Säuredichte / Density / Densité / Densidad [kg/l]	30°C
> 12,80 Volt	100%	1,29	
> 12,55 Volt	75%	1,25	
> 12,32 Volt	50%	1,21	
> 12,18 Volt	25%	1,14	
> 12,00 Volt	entladen / discharge / décharge / descarga	< 1,13	



210 Tool hydrometer acid (0.120-087.0)

Pos	Material #	Name	Qty.	Unit
1	6.803-015.0	Battery hydrometer 1,10-1,30kg/l	1.000	ST



220 Tool oil pump extraction system -12V (0.120-139.0)

Pos	Material #	Name	Qty.	Unit
1	6.491-943.0	Oil suction pump 12 V	1.000	ST
