









Warning









These are only brief instructions! Please read and comply with these instructions prior to using or servicing your appliance.

The non-compliance of the operating and safety instructions may lead to damages of the appliance and to dangers for the operator and other persons.

Start up

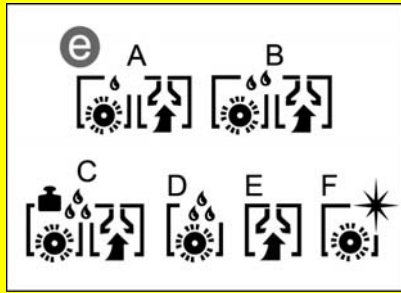
1	A 	B 	<p>A Unplug the charger from the mains. B Wind the mains cable around the cable holders.</p>
2	A 	B 	<p>A Open the lock of the fresh water reservoir. Fill fresh water (maximum 60 °C) until the lower edge of the filling nozzle. Close the lock of the fresh water reservoir. or B Connect the hose to the automatic filling system and open the water supply (max. 60 °C, max. 5 bars).</p>
3	A 	B 	<p>Model with dosing equipment "Dose" A Place the detergent bottle into the holder. Close the bottle lid. Insert the suction hose of the dosaging equipment into the bottle. Model without dosing equipment "Dose" B Add the detergent to the fresh water reservoir.</p>

Operation

1	A 	B 	<p>Starting the machine A Turn the program selection switch to "OFF". B Plug in the Intelligent Key.</p>	
2	A 	B 	C 	<p>Driving A Turn the programme selector switch to position 1 "Transport mode". B Release parking brake. C First select the driving speed at the rotary knob.</p>
	D 	E 	F 	<p>Drive forward D Press the driving lever to the front. Stop the machine: Release driving lever. Reverse drive E Press the driving lever to the rear. Stop the machine: Release driving lever.</p>
	<p>Stop F Release driving lever.</p>			

Operation

3



Cleaning Programs

- A Eco mode**
Wet clean the floor and vacuum up dirt water.
- B Normal mode**
Wet clean the floor and vacuum up dirt water.
- C Increased brush contact pressure**
Wet clean the floor (with increased brush contact pressure) and vacuum up dirt water.
- D Intense mode**
Wet clean the floor and allow the detergent to react.
- E Vacuum mode**
Vacuum the wastewater.
- F Polishing mode**
Polishing the floor without the application of liquid.

4



Setting the water quantity

- A** Adjust the water quantity using the regulating button according to the dirt on the floor covering.

5



Info button

- Use the Info button to select the menu items and do the settings.
- A** Turning the button to the right/left scrolls through the menus forward/ backward. The selected setting gets accepted by pressing the button.

Finish operation

1



Turn off the appliance

- A** Close the regulatory button for setting the water quantity.
- B** Release driving lever.
- C** Set the program selection switch to suction or vacuuming.
- D** Briefly drive forward and suck of the remaining water.
- E** Turn the program selection switch to "OFF".
- F** Remove the Intelligent Key.

Finish operation

2

A



B



Emptying the Dirt Water Reservoir

⚠ Warning

Please observe the local provisions regarding the wastewater treatment.

- A Take the water discharge hose from the support and lower above a suited collection device.
- B Rinse the wastewater reservoir with clean water or with the rinsing system for the wastewater reservoir (option). Take the water discharge hose from the support and lower above a suited collection device. Leave the cover open to let it dry.

3

A



Emptying the Fresh Water Tank

⚠ Warning

Please observe the local provisions regarding the wastewater treatment.

- A Loosen the lid for emptying the fresh water - do not remove it fully. Drain water. To rinse the fresh water reservoir, remove the cover with the seal completely and remove the fresh water filter.

4

A



Empty waste container (only with R cleaning head)

- A Remove bulk waste container and empty it.

5

A



Charging battery

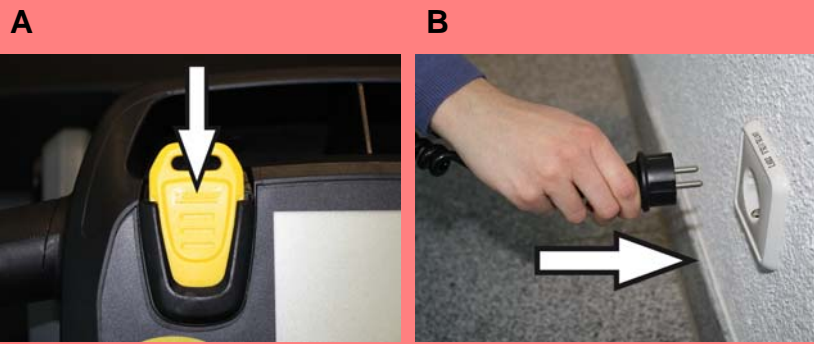
- A Charge battery, if required. Insert the plug of the connecting cable into the socket.

Maintenance and care

		daily	monthly	Kärcher Customer Service
1	A			
	B			
2	A			
	B			
3	A			
	B			
4	A			
	B			
5	A			

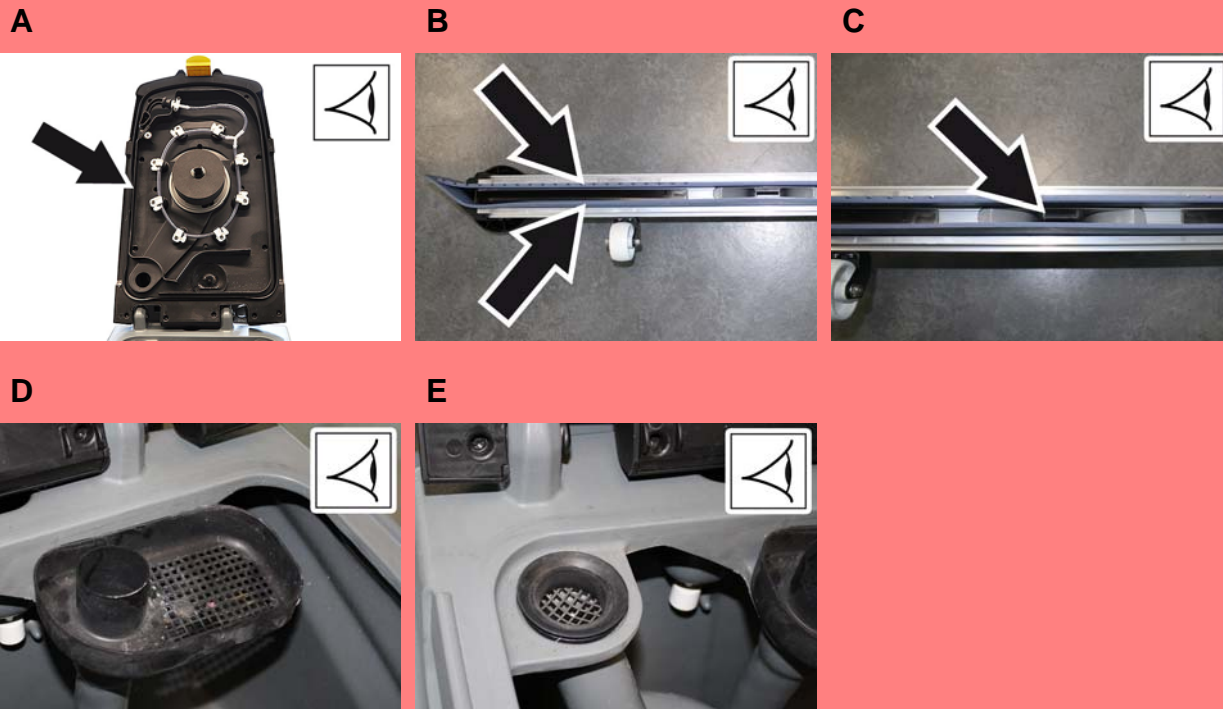
Troubleshooting

1



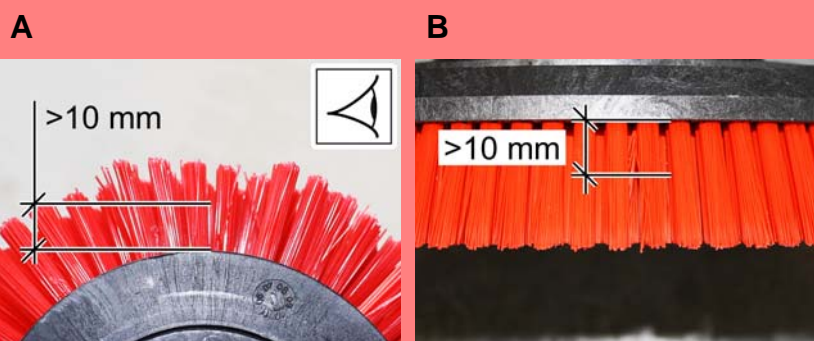
- Appliance cannot be started
- A Stand-by. Plug in the Intelligent Key. Turn the program selection switch to the desired programme.
 - B Battery depleted. Charge battery.

2



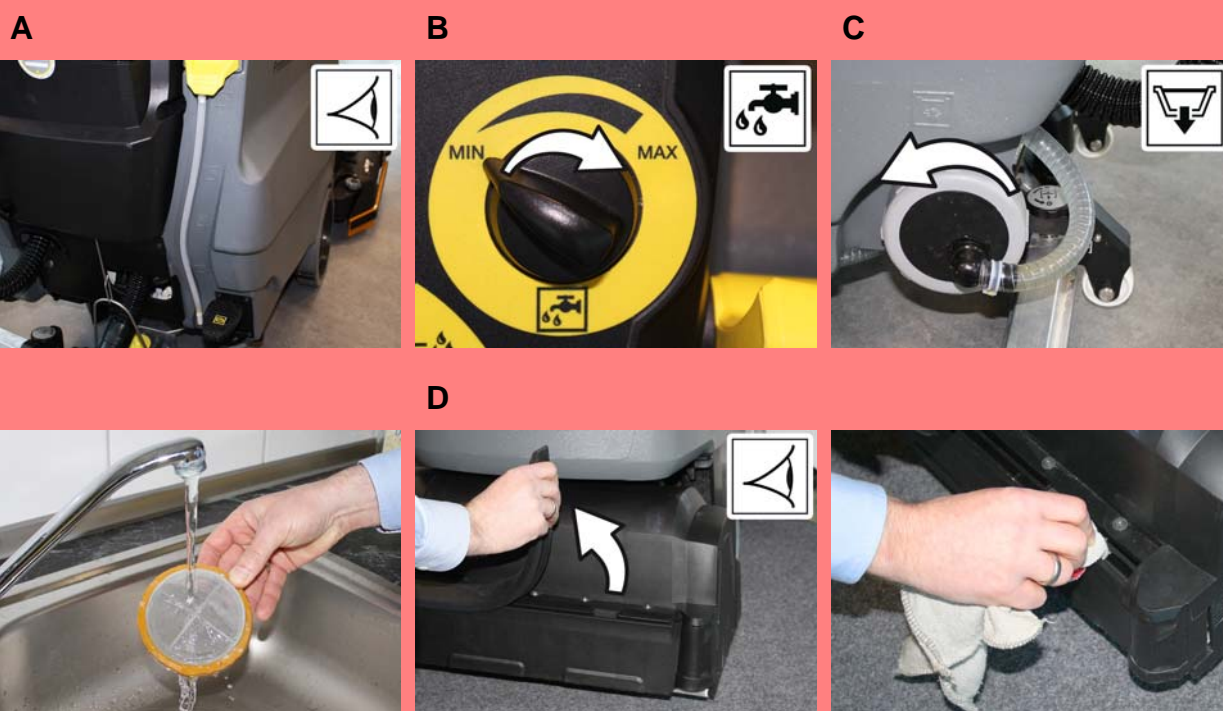
- Insufficient vacuum performance
- A Clean the seals between dirt water reservoir and cover and check for tightness, replace if required. Clean the seals between dirt water reservoir and cover and check for tightness, replace if required.
 - B Clean the vacuum lips on the vacuum bar, turn or replace if required.
 - C Check suction hose for blockages; clean if required. Check connection between suction hose and suction bar and suction hose and wastewater tank.
 - D Remove the coarse dirt sieve from the wastewater reservoir and clean it.
 - E Check the fluff filter, clean if required.
 - F Check the setting of the vacuum bar.
 - G Check if the cover on the dirt water discharge hose is closed
 - H Empty wastewater tank (See "End operation", item 2).

3



- Insufficient cleaning result
- A Check brush for wear and tear and clean it. Check the brushes for wear (bristle length at least 10 mm), replace if required.

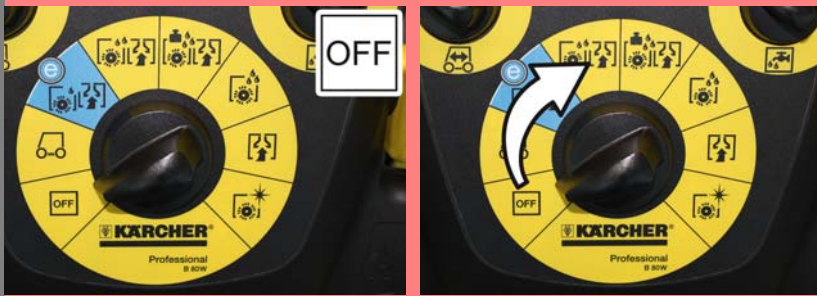
4



- Insufficient water quantity
- A Check fresh water level, refill tank if necessary.
 - B Increase the water volume on the regulating knob for water volume.
 - C Unscrew the lock of the fresh water reservoir. Remove and clean the fresh water filter. Insert the filter and screw in the lock.
 - D Remove the water distribution strip from the cleaning head and clean water canal (only R cleaning head).

Troubleshooting

5

A

Brushes do not turn

- A If over-current switch in the electronics system has been triggered, turn programme selection switch to "OFF". Afterwards, set it back to the desired programme.
- B Check the brushes for blockage due to foreign particles, remove them if found.

6

A

B

Do not add detergents

- A Increase the water volume to activate the dosing pump.
- B Check level of detergent solution in the fresh water tank; refill, if required.